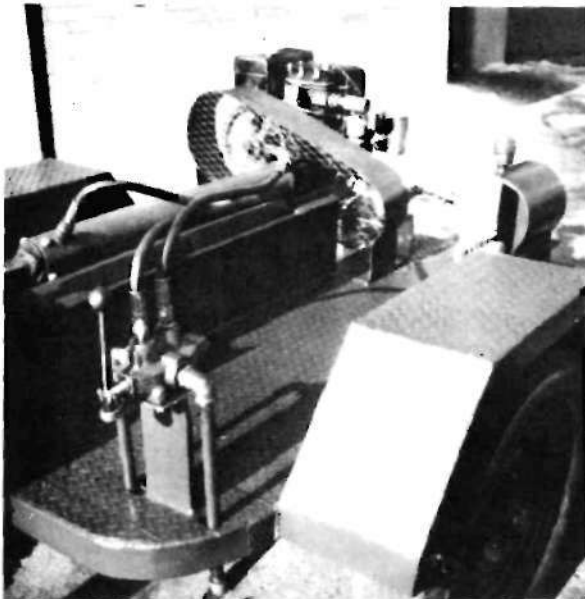
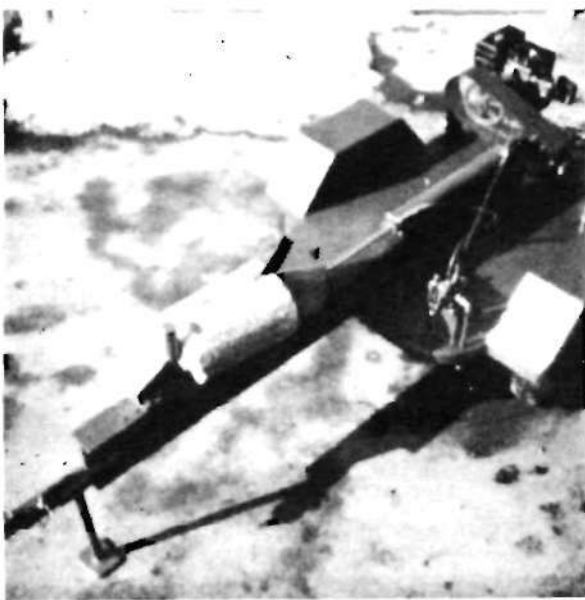


Hydraulic Wood Splitter

Author: James Warren Locks
Instructor: Tom Ogawa
School: Eastern Idaho Vo-Tech School
City & State: Idaho Falls, ID

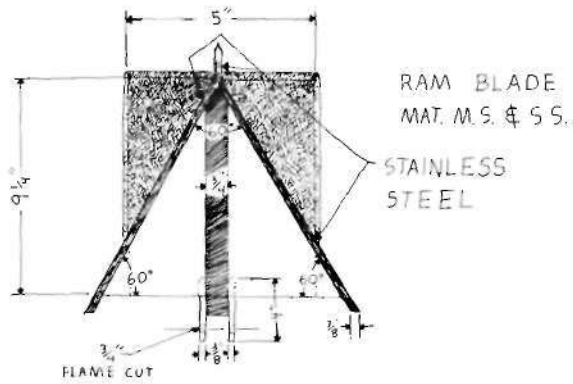


The hydraulic wood splitter works by applying hydraulic pressure on the ram forcing a wedge into the wood. Oil pressure is created by means of a seven gallon per minute oil pump. This is driven by a seven horse power gas engine. The proper speed on the pump is obtained by reduction gears, reducing engine speed from 3600 R.P.M. to 2200 R.P.M. Oil pressure from the pump is 1500 lbs. going through a push-pull two-way valve. The pressure relief valve is set at 1500 lbs. The hydraulic ram is a three inch diameter eighteen inch stroke which creates a force of 10,597 lbs. of thrust. The wedge is designed to split the wood block wide open within the first 10 inches of the stroke. This happens due to the width of the wedge. Backstop is adjustable in two inch intervals to conform to the size of wood blocks.

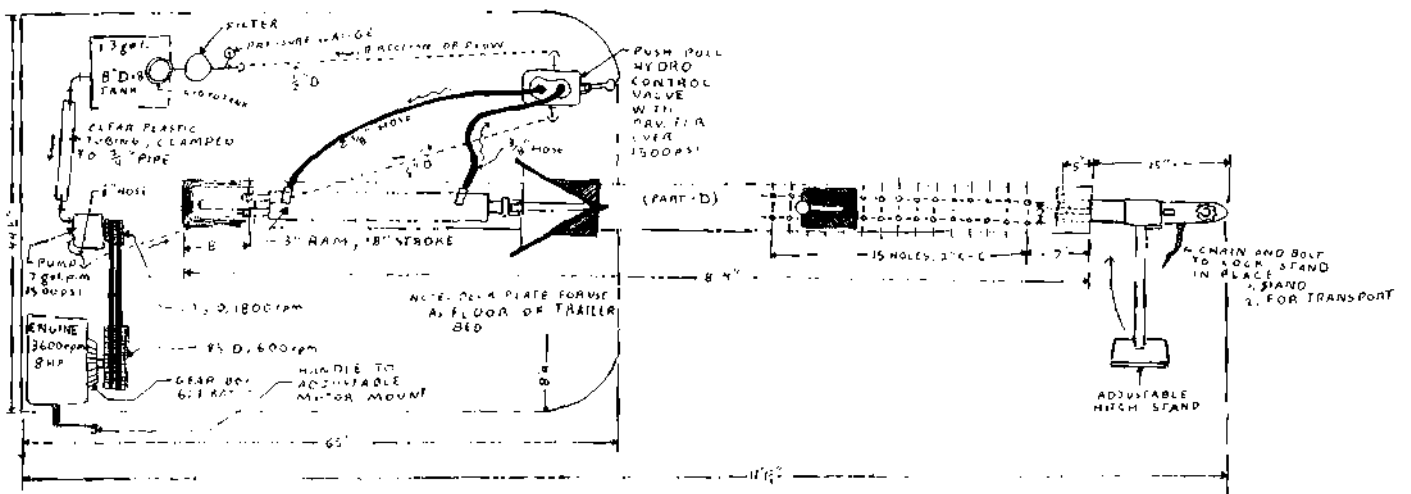
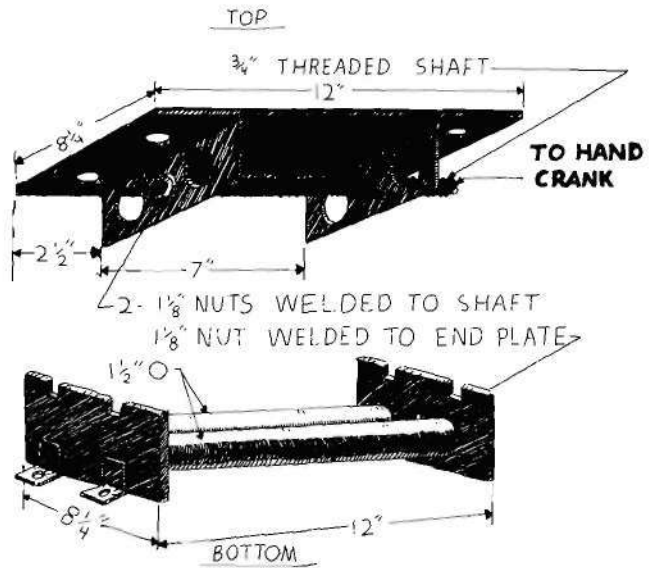
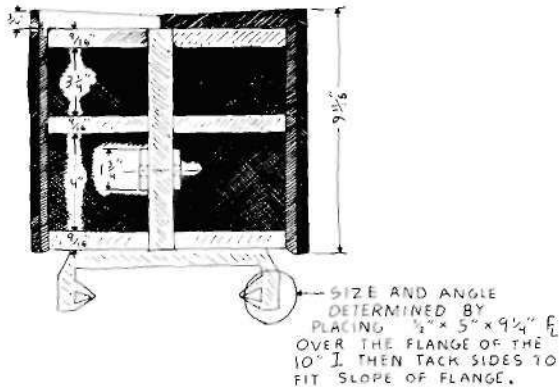


Trailer was constructed of mild steel with stainless steel on wear surfaces. The trailer is narrow enough to fit in the back of a *Vi* ton pickup and is equipped with fenders for over the road travel. Leaf springs allow a smooth ride over rough road and shock absorbers control bounce.

Other features include a tongue weight of 80 lbs. for easy handling, a ball and socket hitch for fast hook-up, and a swivel stand which supports the front of the trailer when in use and swivels up out of the way when transporting.



ADJUSTABLE MOTOR MOUNT
TO ENGAGE OR DISENGAGE
BELTS THAT DRIVE THE PUMP
MAT. M.S.



NOTE: FOR DETAIL OF ADJUSTABLE MOTOR MOUNT
AND RAM BLADE SEE ACCOMPANYING DRAWINGS
AXIS IS LOCATED SO WEIGHT BIAS IS TO THE FRONT
PART-D = 10" STD I BEAM
5 TON THRUS TO RAM BLADE

