

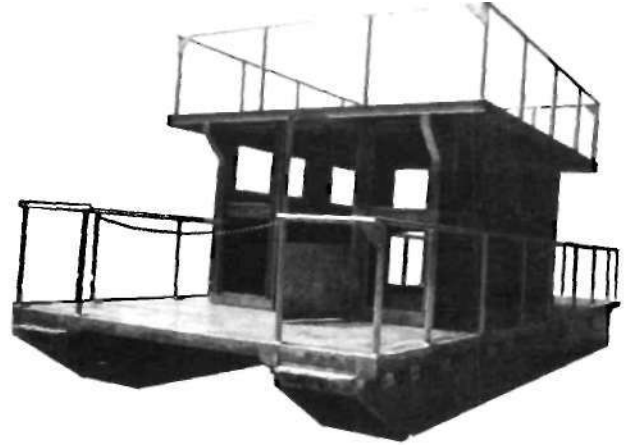
All Aluminum Multi-Purpose Pontoon

Authors: Noah Hall, Jr.
Larry Gross
John W. Tapio
Ronald H. Caudill
Rickey Caudill

Instructor: J. Calitri

School: Hazard State Vocational-Technical School

City & State: Hazard, KY



The portable pontoon boat is so constructed that it may be taken down and put together again in approximately 24 hours. It was built in this manner so it can be moved without special equipment or permits from one lake to another or from one region to another. This gives it a great economic advantage over other boats of this type.

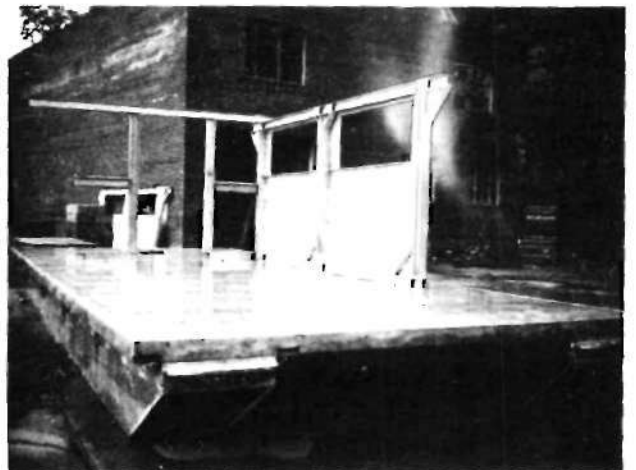
General Specifications

In order to give the afore mentioned multi-purpose pontoon added dimension and capabilities, additional items will be added in complementing the excellent work done by the welding students.

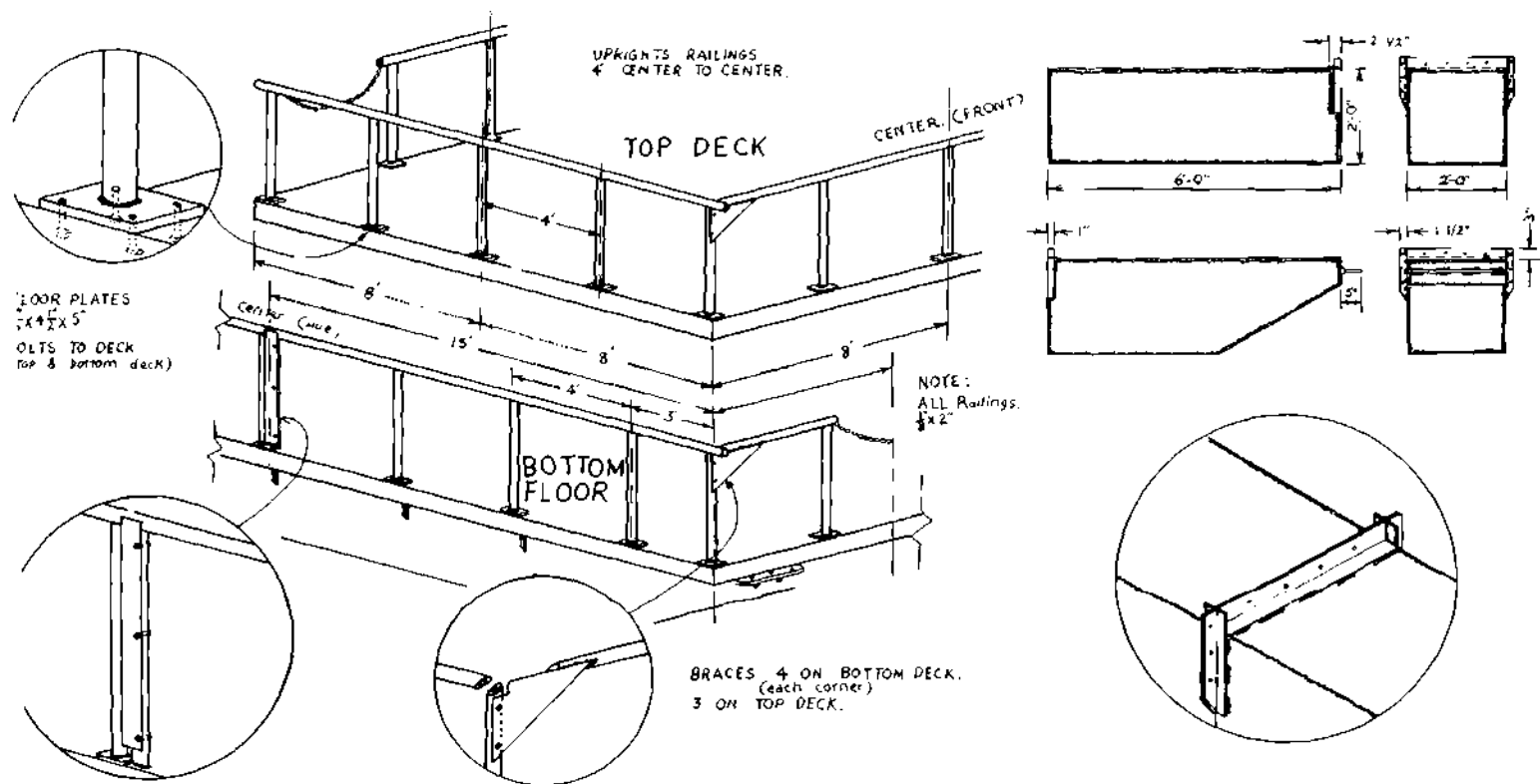
In order to mobilize the unit, motor and steering units will be added to suit the owner's specifications. In order to make the multi-purpose pontoon more adaptable to all weather conditions, and for safety purposes, the cabin will be fully insulated and carpet added to the interior and exterior surfaces. Electrical outlets and power units will be made available so that the unit will be almost self-contained.

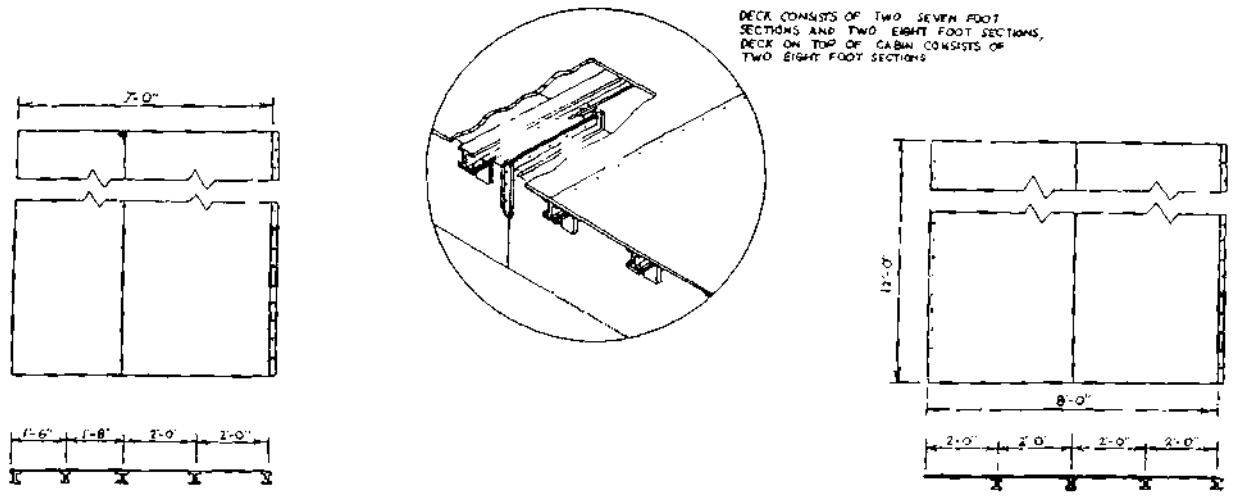
These added attractions should make for an elaborate flotation device with the addition of styrofoam in each of the pontoon units. Of course these attractions will not require the use of welding skill and technique but are merely listed to give the viewer a complete and thorough idea of what welding skills have made possible in the construction of such an elaborate recreational vehicle.

Approximate cost of pontoon construction, using surplus material, is \$2500.



Quantity	Material	Description	Quantity	Material	Description
12	Aluminum Sheets 1/8" x 48" x 144"	10-Pontoons 2' x 2' x 6'	15	Aluminum Pipe	Uprights Top Railing 1/8" x 2" x 34 1/2"
8	Aluminum Sheets 3/16" x 48" x 144"	Bottom Deck 12' x 30'	2	Aluminum Pipe	Railings 1/8" x 2" x 16'
4	Aluminum Sheets 3/16" x 48" x 144"	Top Deck 12' x 16'	1	Aluminum Pipe	Railing 1/8" x 2" x 9'
3	Aluminum Sheets 3/16" x 48" x 144"	Cover Cabin Sides 6 1/2' x 14'	1	Aluminum Pipe	Railing 1/8" x 2" x 12'
72'	Aluminum Skirting	Bottom Deck y, 6" x 4 1/4" x 72'	39	Aluminum Plate	Floor Plates for Uprights 3/16" x 4 1/2" x 5" to bolt railings to decks.
32'	Aluminum Skirting	Top Deck 3/16" x 6" x 32'	<i>Note: All Bolts Stainless Steel</i>		
17	Aluminum H-Beams 1/4" x 3 1/2" x 4" x 12'	Bottom Deck Foundation	272	Machine Bolts	Boh Deck to pontoons W x 1V 1/2"
9	Aluminum H-Beams 1/4" x 3 1/2" x 4" x 12'	Top Deck Foundation	10Q	Flat Head Bolts	Bolts Deck Sections W x 1 Vi"
14	Aluminum H-Beams 1/4" x 3 1/2" x 4" x 12'	Cabin Frame Work	96	Machine Bolts	Bolts Railing to Bottom Deck y 8" x i 1/4"
68	Aluminum Angle	Side Anchors 3/8" x 1 1/2" x 4" x 5'	60	Machine Bolts	Bolts Railing to Top Deck Blots Top to Sides and Sides to Deck V 5" x I Vi"
4	Aluminum Plates	Tie-Ups 3/8" x 6" x 2', each with 3 - 1/4" drilled holes	96	Machine Bolts	Joins Front and Rear to Top Deck 3/8" x 1 1/2"
16	Aluminum Angle	Angle Vi" x 1 Vi" x 1" x 2'	28	Flat Head Bolts	Joins Front and Rear to Bottom Deck 3/8" x 1 1/2"
32	Aluminum Angle	Angle W x 1/2" x 1" x 13"	16	Machine Bolts	Front Glass on each side of door 25 W x 34 W built in Rear Glass on each side of door 25 V 5" x 34 3/8" built in 1/2" x 32 1/2" x 46" Plexiglas 3' x 6' 4"
28	Aluminum Plate	Braces y, 6" x 3 5/8" x 6"	4	Vi" Plexiglass	Aluminum Slide Windows 5' x 2'
12	Aluminum Plate	Gussets V 1/2" x 12" x 12"	4	Vi" Plexiglass	
4	Aluminum Plate	Gussets V x, " x 6" x 6"	2	Aluminum Doors	
24	Aluminum Pipe	Uprights Bottom Railing 1/8" x 2" x 34 1/2"	4	Windows	
4	Aluminum Pipe	Railings 1/8" x 2" x 15'			
4	Aluminum Pipe	Railings V 5" x 2" x 36"			





DECK CONSISTS OF TWO SEVEN FOOT SECTIONS AND TWO EIGHT FOOT SECTIONS, DECK ON TOP OF CABIN CONSISTS OF TWO EIGHT FOOT SECTIONS

