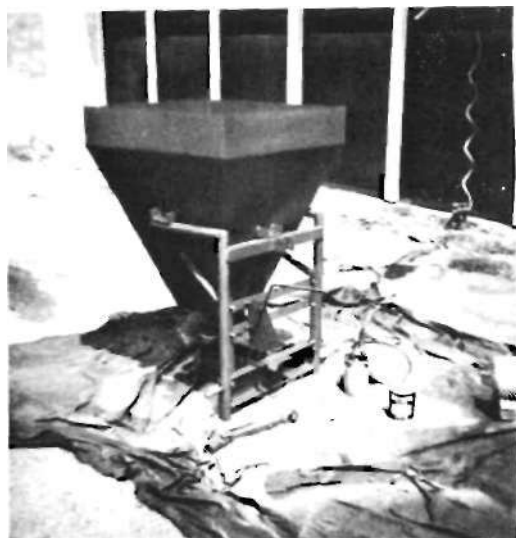


Three Point Hitch Grain and Fertilizer Spreader with Five Bushel Hopper

Author: James Alan Graves
 Instructor: R. V. Callahan
 School: N. Little Rock Ole Main High School
 City & State: N. Little Rock, Ar.

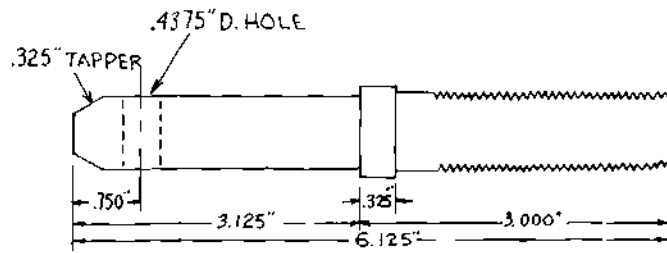
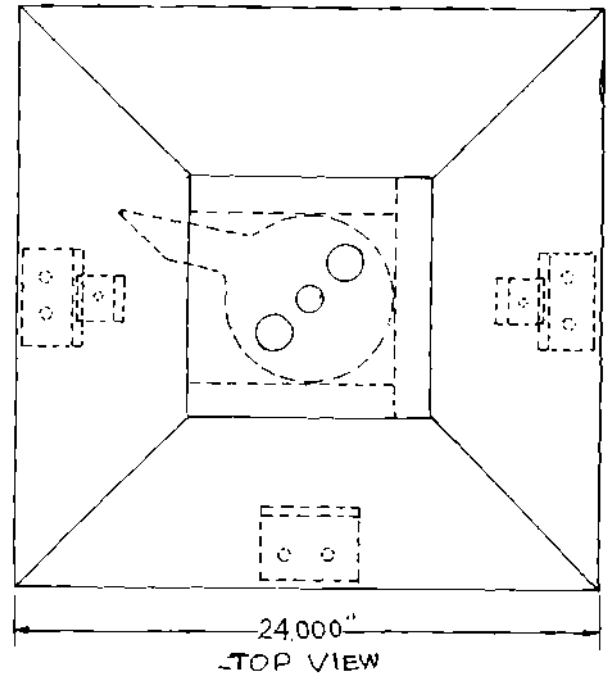
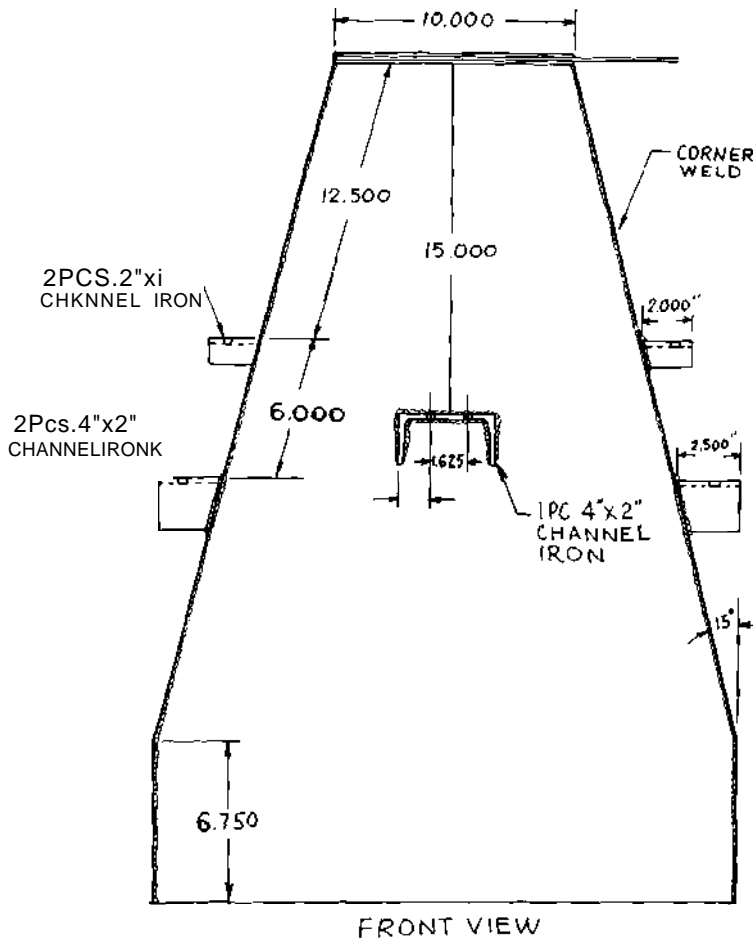


Materials

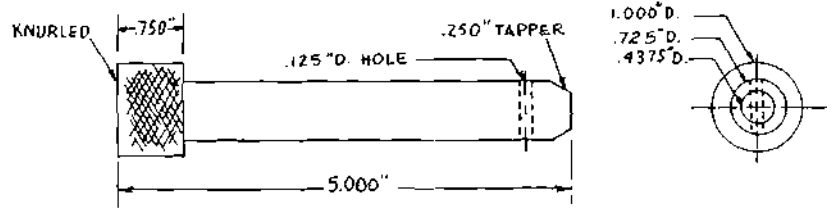
36" x 96" Black Iron 16 gauge sheet metal
 1" x 1" Angle Iron 1/8" Thick 3' 9"
 2" x 1" Channel Iron 1/4" Thick 8' 7"
 5" x 2" Channel Iron 1/4" Thick 2' 2"
 4" x 2" Channel Iron 1/4" Thick 5"
 1/8" x 1 1/2" Strap Steel 2' 2"
 4" Square Tubing 4 1/2"
 3 pieces 8620 Steel 1" dia. 6"
 1 piece 8620 Steel 2 1/2" dia. 1 1/4"
 Steel Pipe 1 1/4" O.D. 7' 8"
 2 3/8" - NC Hex Nuts
 6 20-32 Allen Head Cap Screws
 2 5/16 - 24 Set Screws
 6 3/8" - 16 1/2" Set Screws
 9 1/4" - 28 Hex Head Bolts
 10 1/4" - 28 Self locking Nuts
 6 3 1/2" x 3/8" 16 Hex Head Bolts
 4 5 1/2" x 3/8" 16 Hex Head Bolts
 8 1 1/2" x 3/8" 16 Hex Head Bolts
 12 3/8" - 16 Hex Nuts
 LSA 103 YR Boston Spiral Miter Gear
 LSA 103 YL Boston Spiral Miter Gear
 25" x 25" Gauge Aluminum

Universal

4 pieces 3/4" x 1 1/4" 1/4" Plate
 4 Grease Fittings
 1 8620 Cube 1" x 1" x 1"
 2 pieces 1" x 1 3/4" 1/4" Plate
 4 Round Head Rivets 1/2" long
 1 1" Tubing 11"
 1 3/4" Tubing 11"
 1 3 bolt self aligning Precision Bearing
 3 Flanged Bearings with O.D. 1 1/8" and I.D. 3/4"
 1 1/4" Cotter Key
 1 1/8" Cotter Key
 1/8" Key Stock
 3 3/4" True Arch Rings
 6 Flange Retainers
 2 qts. of paint
 1 qt. primer MP 100
 1 qt. white paint
 4 cone Strainers
 5 lbs. of 7018 Rod
 5 lbs. of 6011 Rod
 3 lbs. of 6013 Rod
 5 Grinding Discs



BOTTOM PINS ON FRAME



TOP PIN ON FRAME

