

# Pins, Forks, Skewers and Discovered Attacks

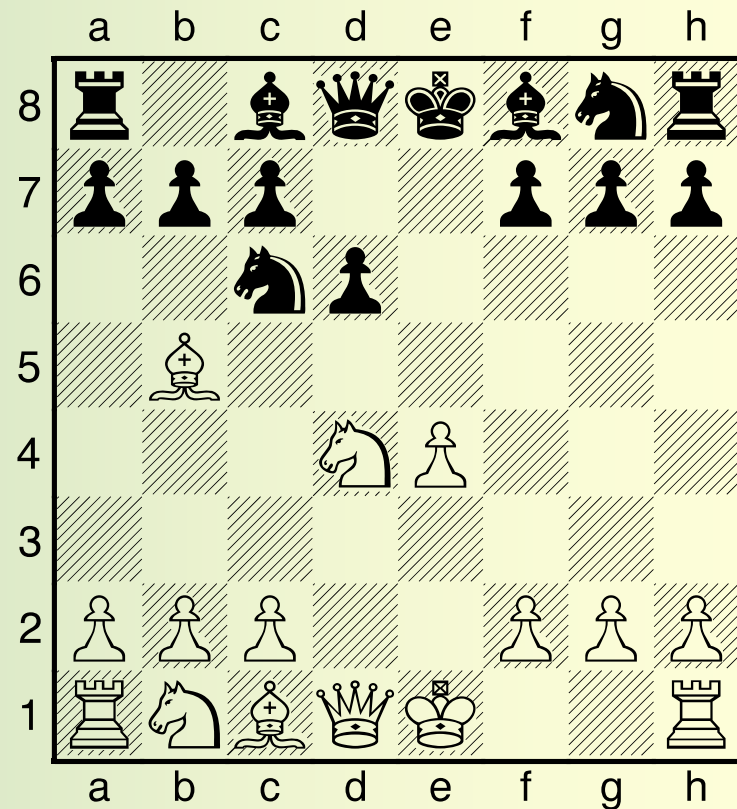
Basic Tactics

# What We Will Cover

- **Pins, Forks, Skewers & Discovered Attacks** are tactics or tricks
- **Pins** – Stop your opponent from moving or using a piece
- **Forks** – allow you to attack two pieces at once
- **Skewers** – force your opponent to move a piece and often lose the exchange
- **Discovered Attacks** – allow you to use a piece that you do not move

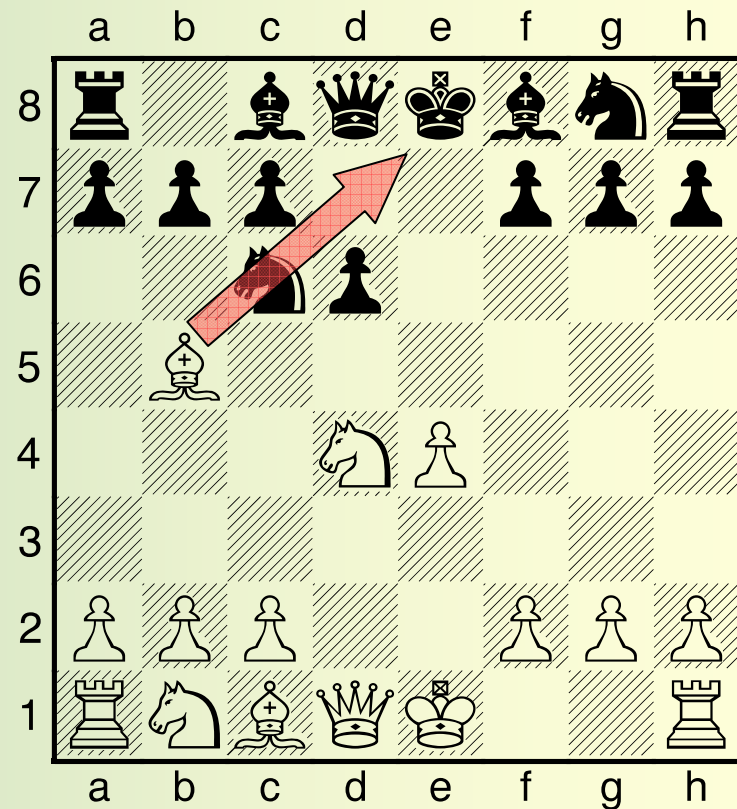
# Pins

- A pin is when you attack one piece and threaten a piece behind it as well.
- Notice how the Knight on c6 cannot move



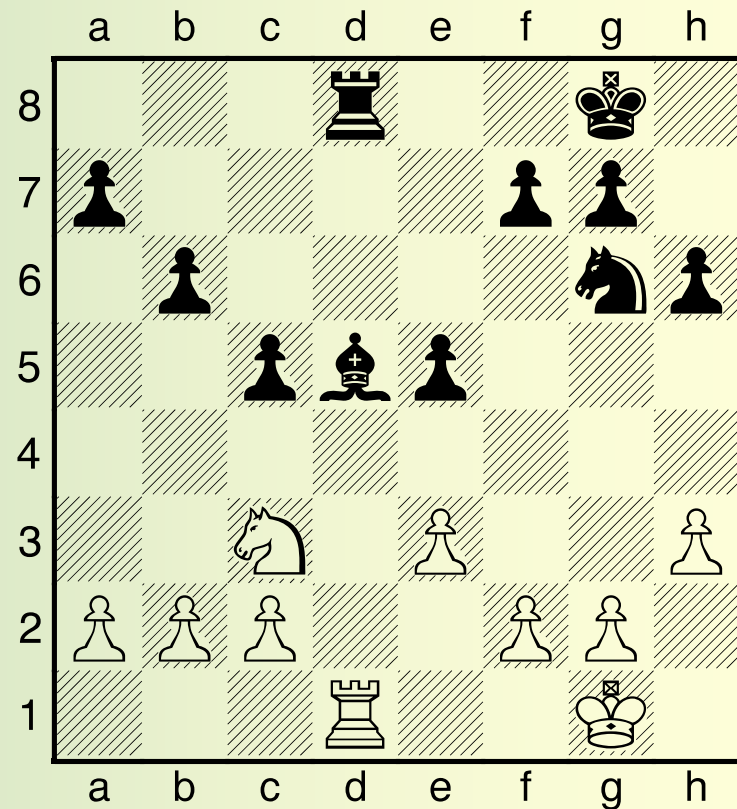
# Pins

- The Bishop on b5 threatens both the Knight on c6 and the King on e8



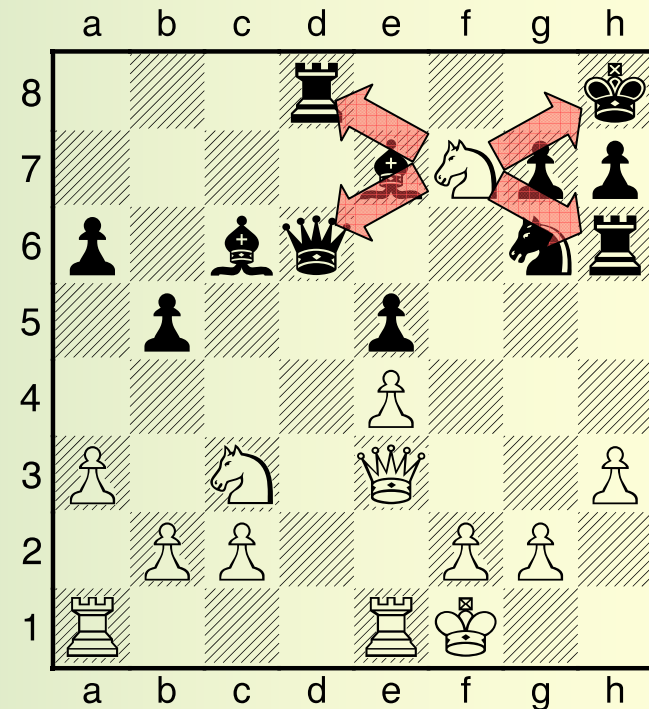
# Pins

- Pins are not always against the King
- In this position it is Black to move
- Black is about to lose at least a Bishop



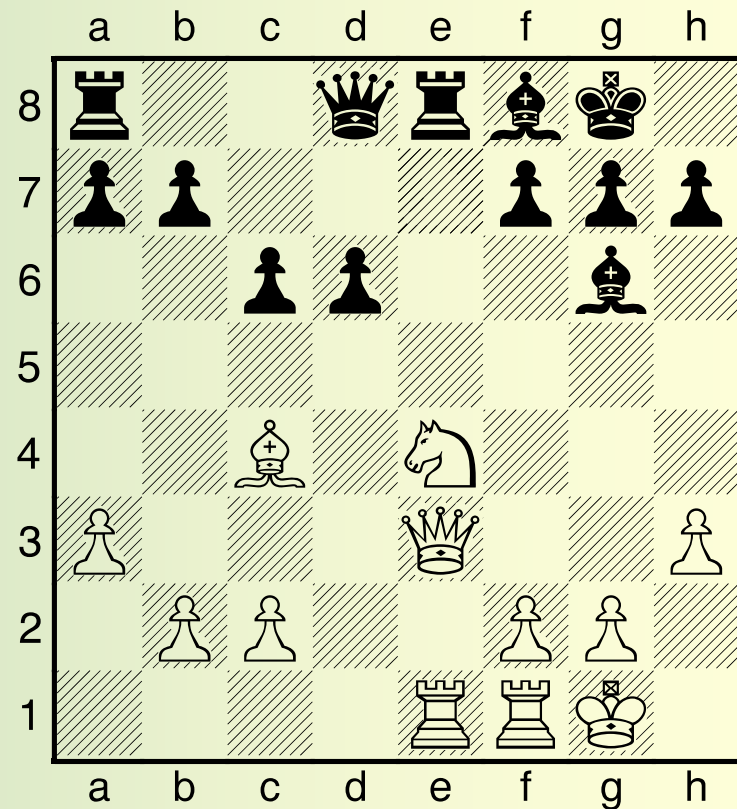
# Forks

- A fork is when one piece attacks two or more pieces at the same time
- In this position, White has just moved the Knight to f7
- It is Black to move but the King, Queen and two Rooks are all under attack by one Rook
- Black has to move the King and is about to lose the Queen for a Knight



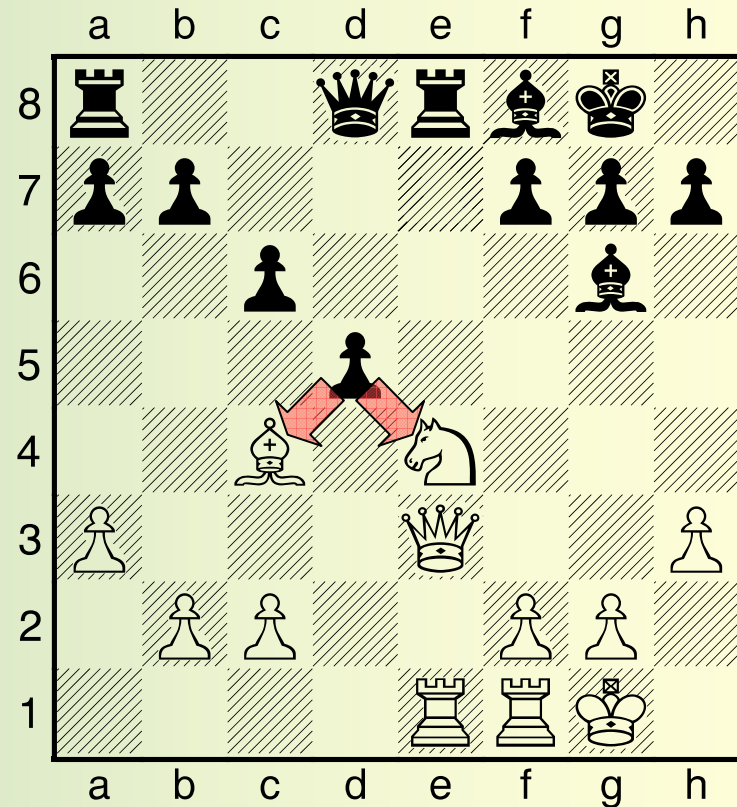
# Forks

- In this position, it is Black to move
- Do you see a good move for Black?



# Forks

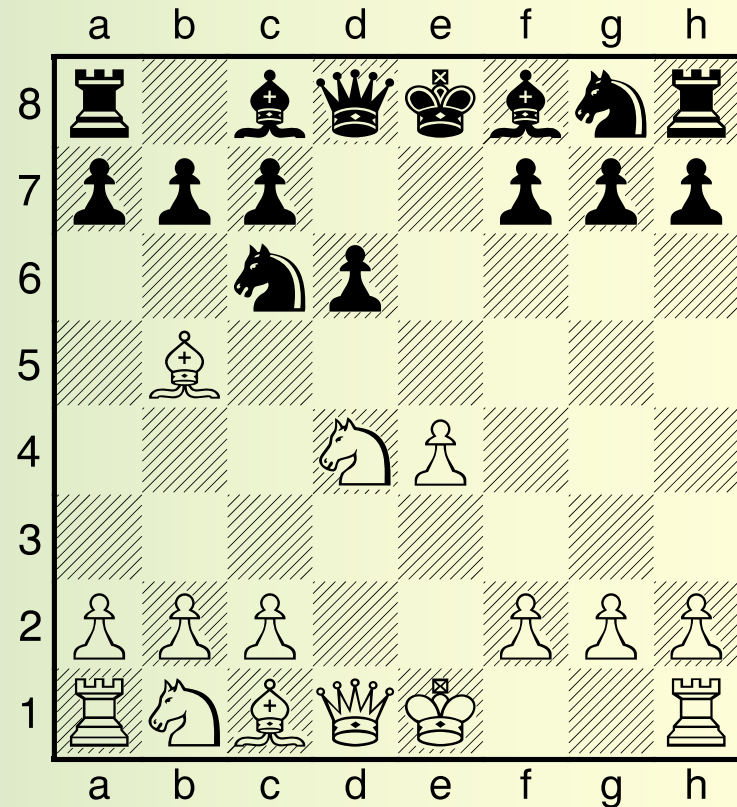
- e5!
- Forks the Knight and Bishop
- White will lose one of the pieces





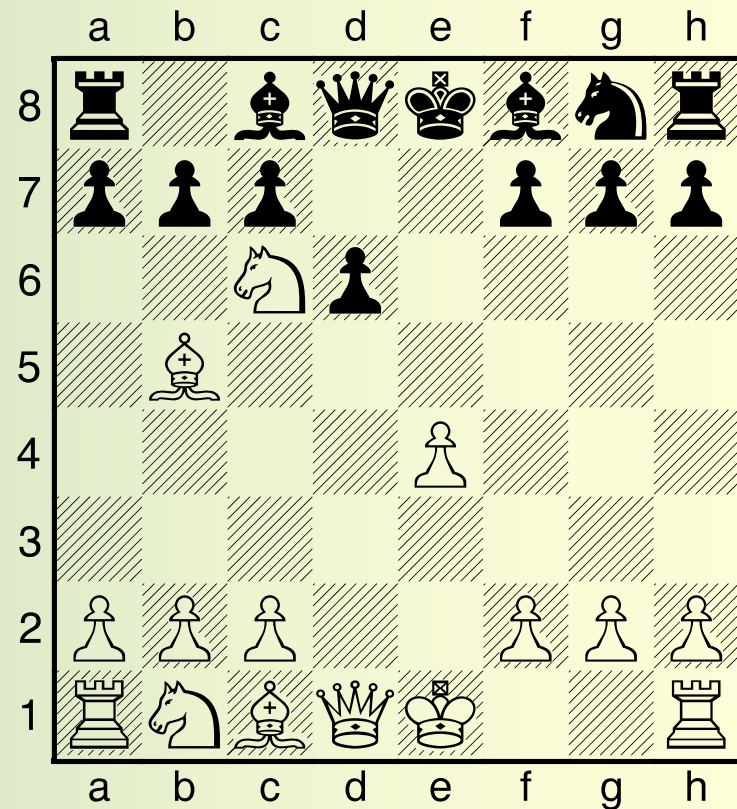
# Pins and Fork Working Together

- In this position, it is white to move
- First Nxc6



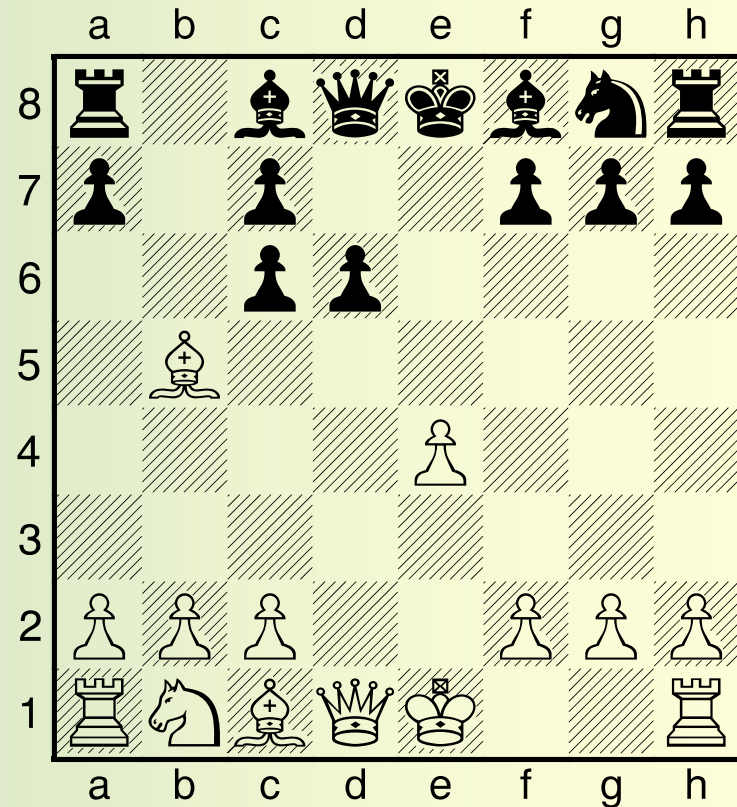
# Pins and Fork Working Together

- The Queen is under attack!
  - Block
  - Run
  - Capture



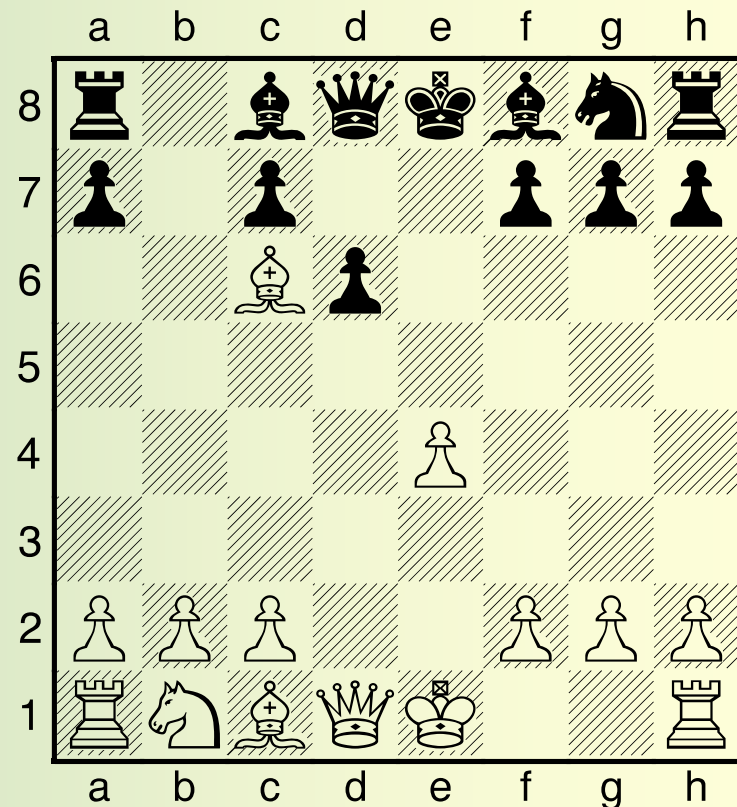
# Pins and Fork Working Together

- The Queen is under attack!
  - Block
  - Run
  - Capture? exc6



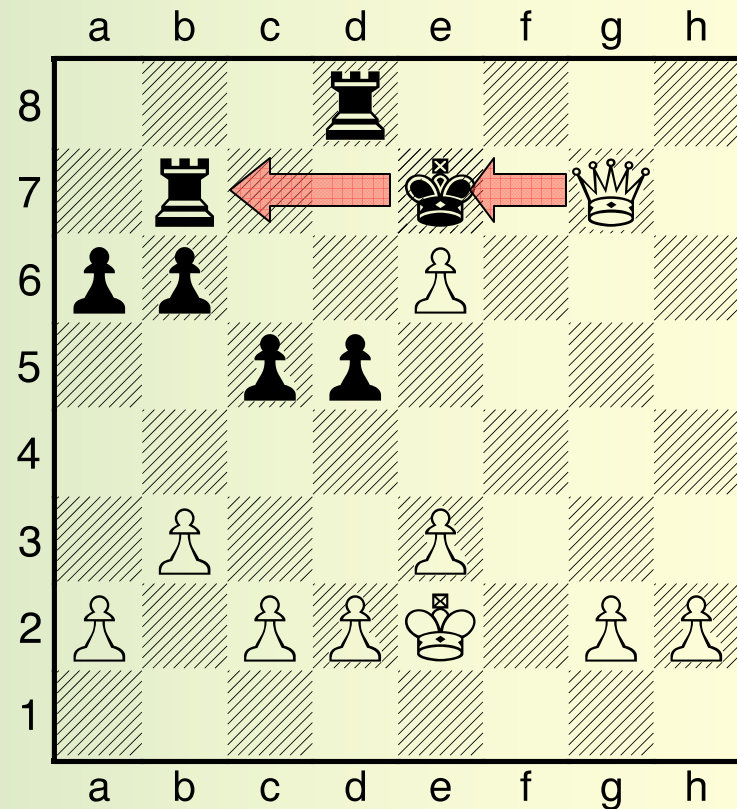
# Pins and Fork Working Together

- The Queen is under attack!
  - Block
  - Run
  - Capture?
- Bxc6 + with a FORK!
- Notice how the Bishop and Knight work together



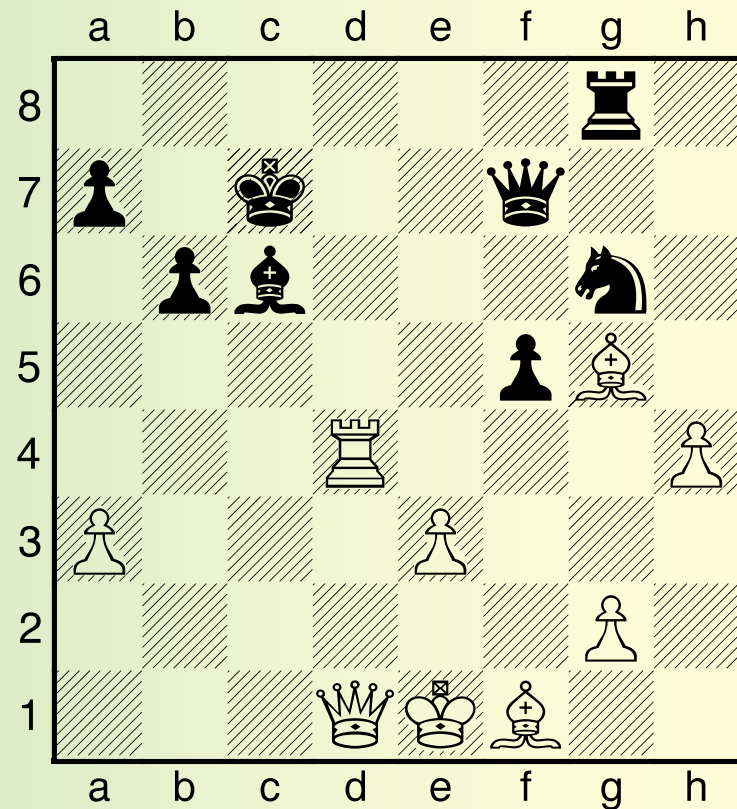
# Skewers

- A Skewer is like a Pin but backwards
- The stronger piece is in the front and the weaker piece is in the back
- It is Black's turn but still loses the Rook



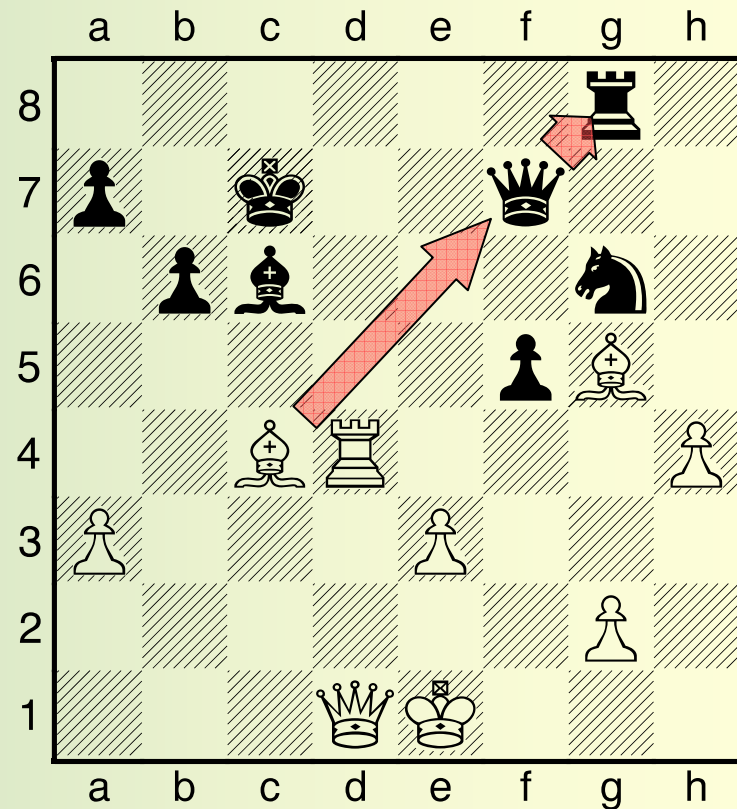
# Skewers

- White to move
- Do you see a good move for White?
  - Hint: It is a Skewer



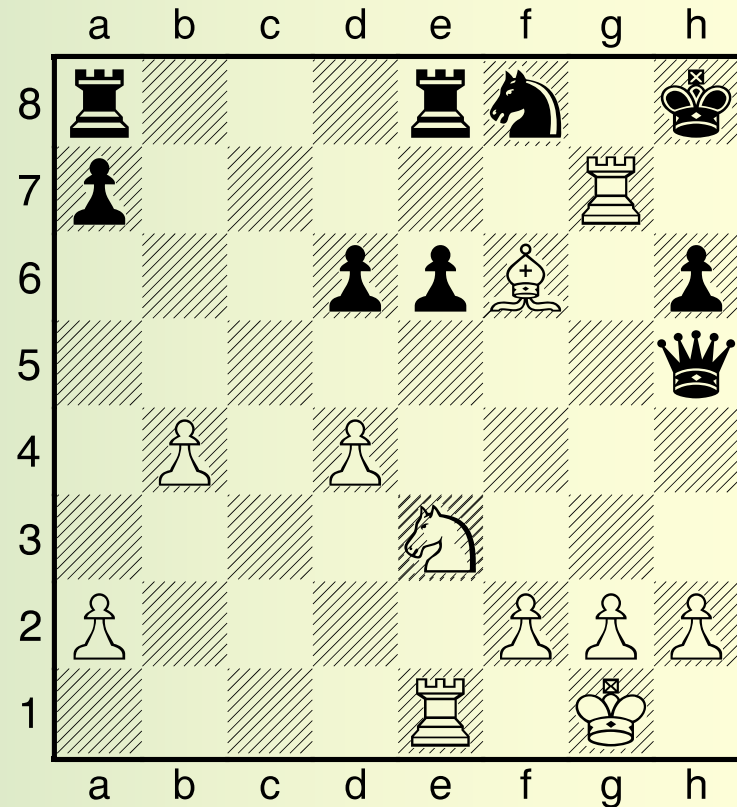
# Skewers

- Bc4
- Now Black to Move
- Black is about to lose a Rook for a Bishop



# Discovered Attacks

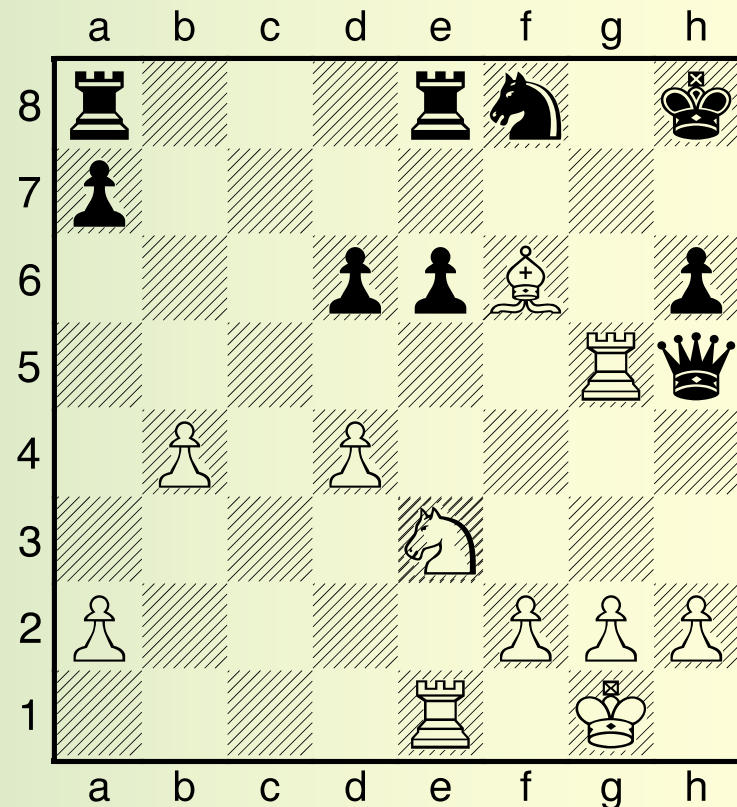
- By moving one piece you can attack with another
- White to Move
- What happens when the Rook on g7 moves?





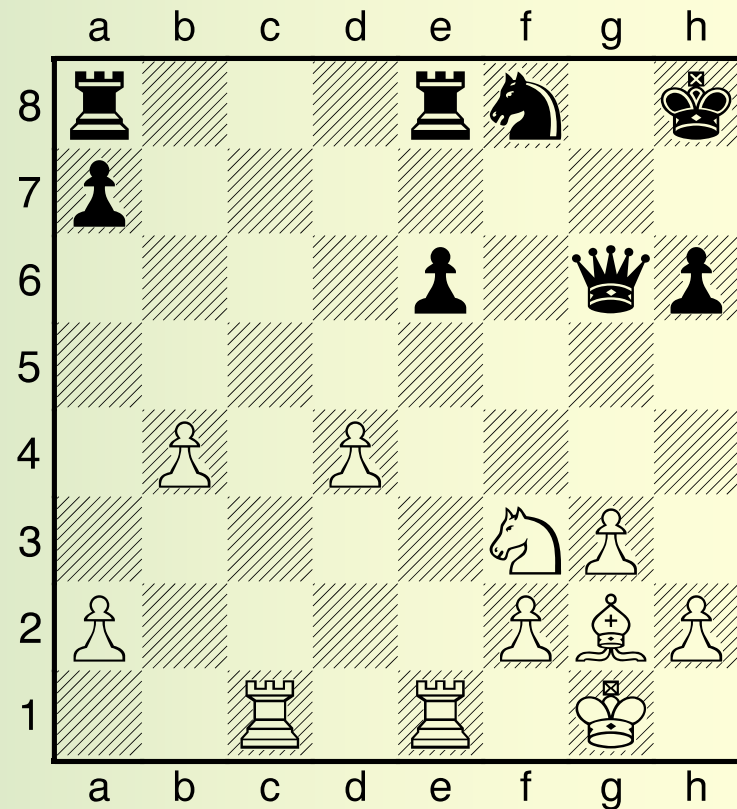
# Discovered Attacks

- By moving one piece you can attack with another
- White to Move
- What happens when the Rook on g7 moves to g5?
- Bishop on f6 delivers check on the King and the Rook attacks the Queen
- Black Loses the Queen



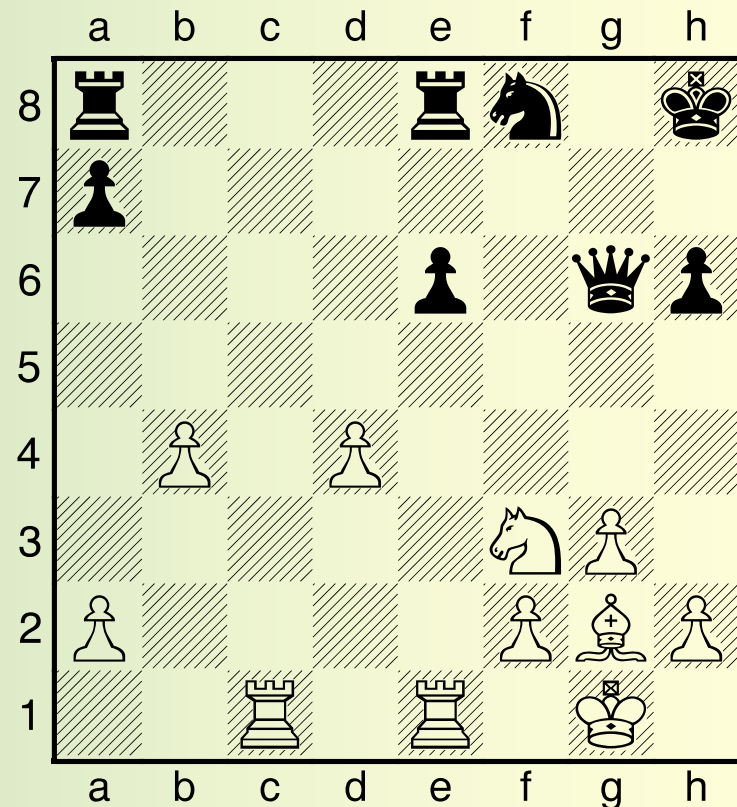
# Discovered Attacks

- White to move
- Do you see a good move for White?
  - Hint: It is a discovered attack



# Discovered Attacks

- White to move
- Do you see a good move for White?
  - Hint: It is a discovered attack
- **Ne5**
  - And the Bishop attacks the Rook on a8 while the Knight attacks the Queen on g6

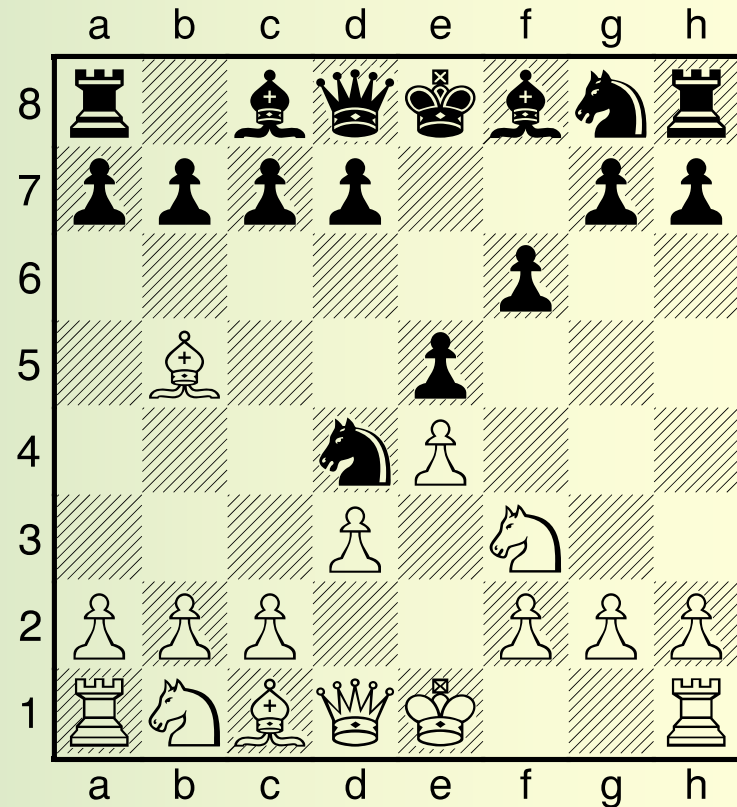


# One Last Thing

- Don't Hang your Pieces
- Assume your opponent will make the best move

# Don't Hang Your Pieces

- White to move
- Notice how the Bishop on b5 is NOT protected and under attack by the Knight
- White has to do something or LOSE the Bishop



# You Opponent Pick Best Move

- Black to move
- Nxc2 + may look good....
- Remember the White can play QxN on c2
- Don't just hope he makes a mistake
- You should see this without moving any pieces.

