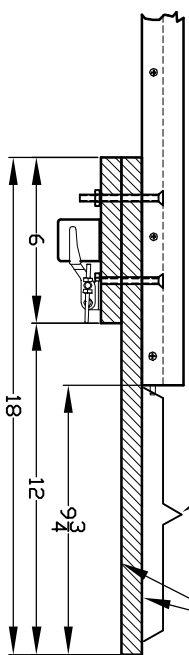
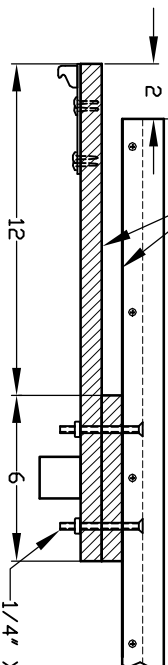


THIS SURFACE WILL REQUIRE SANDING FOR THICKNESS REDUCTION (SAND BOTH SIDES TO FIT)



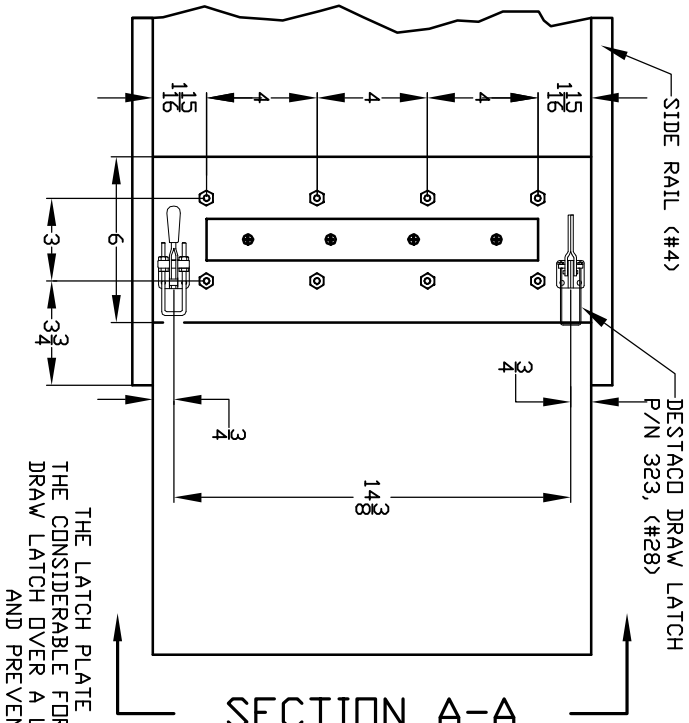
DON'T PAINT MATING SURFACES



**TRACK SECTIONS
SIDE VIEW**

1/4" X 3" FLAT HD BOLTS, CUT TO LENGTH AFTER ASSEMBLY (2 1/2" BOLTS MAY WORK)

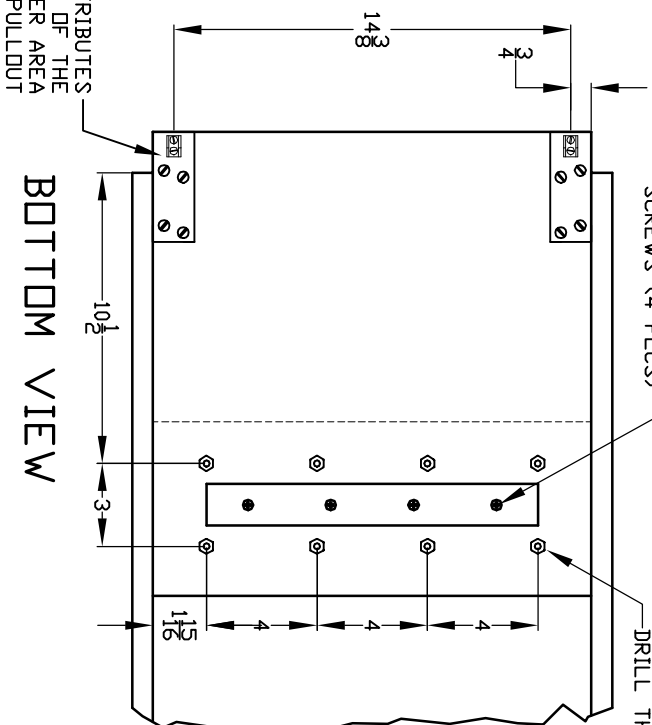
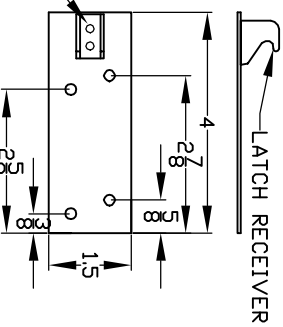
2 1/2" FLAT HD WOOD SCREWS (4 PLCS)



THE LATCH PLATE DISTRIBUTES THE CONSIDERABLE FORCE OF THE DRAW LATCH OVER A LARGER AREA AND PREVENTS PULLOUT

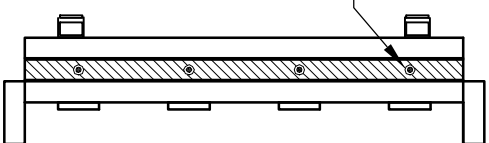
8/32" THRU HOLE, COUNTERSINK FAR SIDE FASTEN WITH #8 FLAT HD SCREW, WASHER, NUT

1/8" - GALVANIZED STEEL PLATE LATCH CATCH PLATE DETAIL



SECTION A-A

INSTALL TABLE PINS (#31) 4 PLACES



TRACK SECTION JOINTS

UPDATED 1/20/00
LARRY BOODWORTH