

36  
35 1/4  
33  
2 1/4

SECURE ALL 1x STRIPS TO 3/4" PLYWOOD BASE WITH 1 5/8" DRYWALL SCREWS AND GLUE.

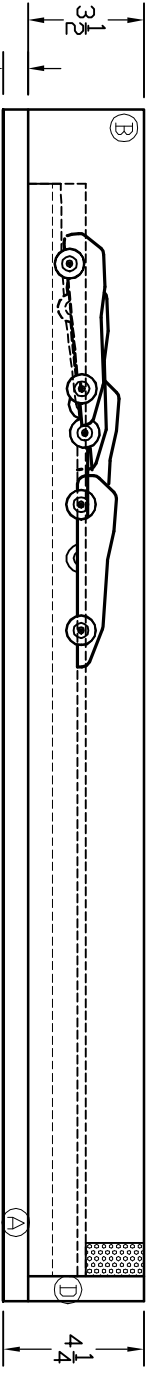
GLUE DR SCREW FOAM TO BACK

LINE BOTTOM OF STOP BOX WITH CARPET

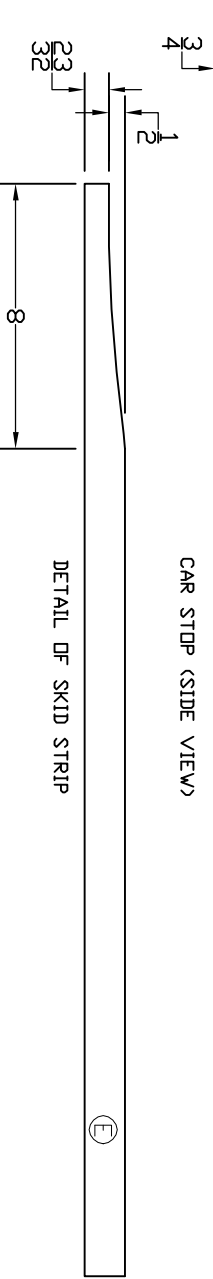
EACH SKID STRIP (E) IS A "2x2" CUT IN PROFILE TO PRODUCE A RAMP. THE RAMP FORCES THE CAR WHEELS OFF THE ROLLING SURFACE AND THE CAR BOTTOM SKIDS ON THE RAMP. ADDITIONAL BRAKING CAN BE HAD BY COATING THE LAST 12" OF THE STRIP WITH RUBBER CEMENT.

PARTS LIST

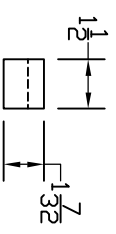
- 1 - 3/4" X 19" X 36" PLYWOOD (A)
- 2 - 3 1/2" X 3/4" X 35 1/4" FIR (B)
- 2 - 1 1/2" X 3/4" X 33" FIR (C)
- 1 - 3 1/2" X 3/4" X 19" FIR (D)
- 4 - 1 1/2" X 1 1/2" X 33" FIR (E)
- 60 - 1 5/8" DRYWALL SCREWS
- 17' - 1" X 2" FOAM RUBBER
- 1 - PT. PAINT
- 1 - WOOD GLUE (AS REQUIRED)



CAR STOP (SIDE VIEW)



DETAIL OF SKID STRIP



SKID RAMP CAR STOP

UPDATED 31 DEC 2000  
LARRY BOSWORTH