

29/64 THRU HOLE
STRIKE BAR
12 3/4" X 1 1/2" (#44)
THRU SLOTS FOR
RESTRAINT BARS
5 X 1/4"

RELEASE - SIDE VIEW

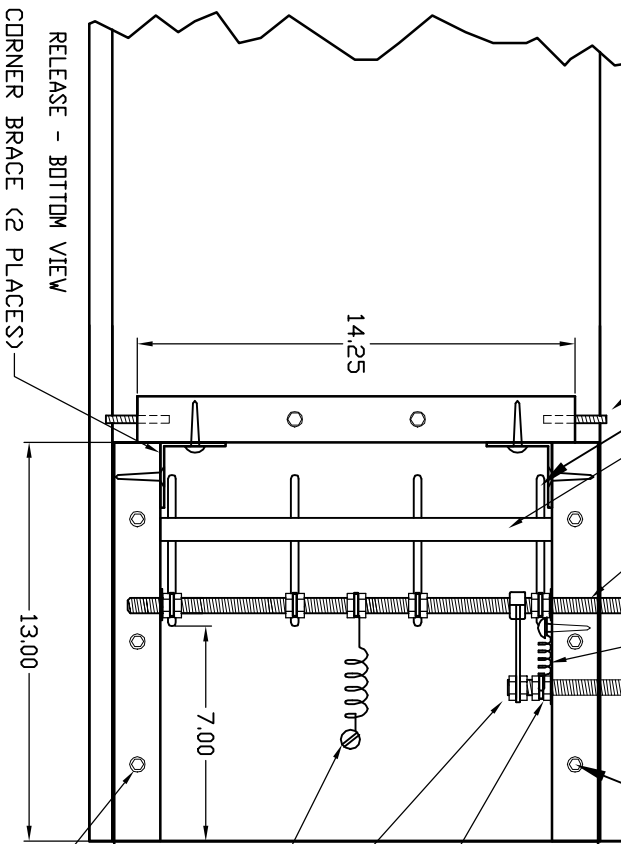
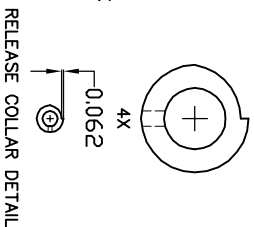
1/4"-20 THREADED
STUD (2 PLACES) (#47)

SCREW (#14), SPRING (#26)
9/32" THRU,
1/2" COUNTERBORE
3/8" DEEP (8 PLCS)

STRIKE BAR SPANS
ACROSS BOTTOM OF BOX
TO ARREST THE CAR
RESTRAINT BARS AFTER
RELEASE. CARPET IS
GLUED TO STRIKE SURFACE

ROTATING RELEASE MECHANISM
IS MADE OF 7/16" THREADED
ROD, JAM NUTS, LOCK WASHERS,
AND THE VARIOUS ALUMINUM
BAR STOCK SHAPES

3 PLCS
 $\phi 5/32$
0.75
2

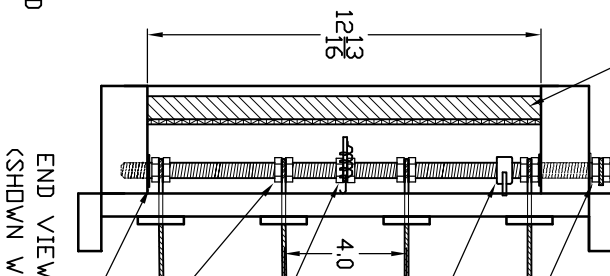


RELEASE - BOTTOM VIEW
CORNER BRACE (2 PLACES)

SHEET 'S'

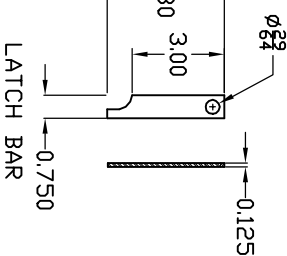
4"-1/4-20 FLATHEAD
SCREW WITH FLAT AND
LOCK WASHERS.
COUNTERSINK FAR SIDE.

SPRING LEVER, JAM
NUTS (#38), LOCK
WASHER (#36)
LATCH BAR, JAM
NUTS (#38), LOCK
WASHER (#36)
SCREW (#14),
SPRING (#27)



END VIEW
(SHOWN WITH PLATE 'S' REMOVED)

LOCK WASHER (#36),
JAM NUTS (#38),
SET LEVER
RELEASE COLLAR
JAM NUTS (#38),
LOCK WASHER (#36),
SPRING LEVER
JAM NUTS (#38),
LOCK WASHER (#36),
RESTRAINT BAR (4 PLCS)
FLAT WASHER (#37),
(BOTH INSIDE ENDS)



RELEASE MECHANISM

UPDATED 20 JAN 2000
LARRY BOSWORTH