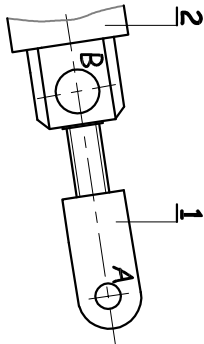


Isolement du vérin (1+2) :



Conclusion :

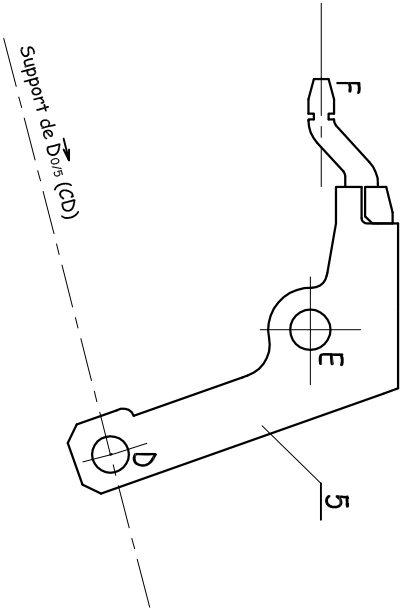
$\vec{B_{2/6}}$

$\parallel =$

$\vec{C_{0/6}}$

$\parallel =$

Isolement du bras male 5 :



$\vec{E_{7/5}}$

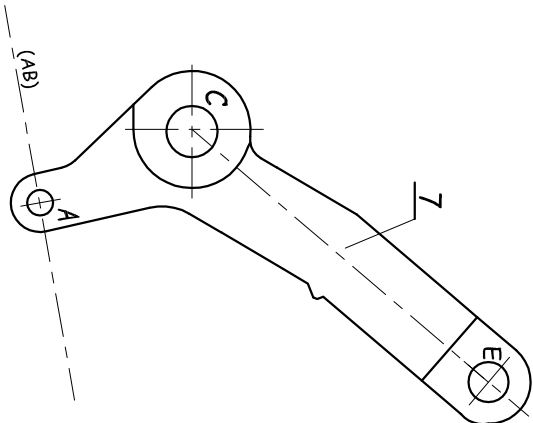
$\parallel =$

$\vec{D_{0/5}}$

$\parallel =$

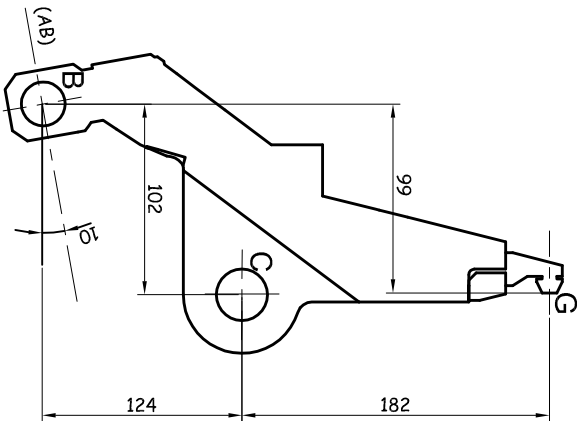
Isolement du bras femelle 6 :

Isolement de la bielle Z :



$\vec{C_{0/7}}$

$\parallel =$



UNIVERSITE DE DAKAR - BACCALAUREAT DE L'ENSEIGNEMENT SECONDAIRE TECHNIQUE					
Durée : 4 h	Echelle: 1: 2,85			Série : T1	
Coeff. : 4	Epreuve :	MECANIQUE		1er Groupe	
Feuille: 6/6				Code: 04T09A01	