

USE this proof to check:

- ✓ **Spelling**
of names, addresses, phone numbers, URLs, etc.
- ✓ **Placement and size**
of all text, logos, images and shapes.
- ✓ Proper use of the **Safe and Bleed areas**
(see below).

But NOT to check:

- ✗ **Exact print color**
Designs on digital devices may appear brighter on-screen than they do in person when printed.

Instructions

1. Check the following pages to verify that your design(s) are error-free.
2. Ensure that your design(s) make proper use of the **Safe** and **Bleed** areas.

Safe Line

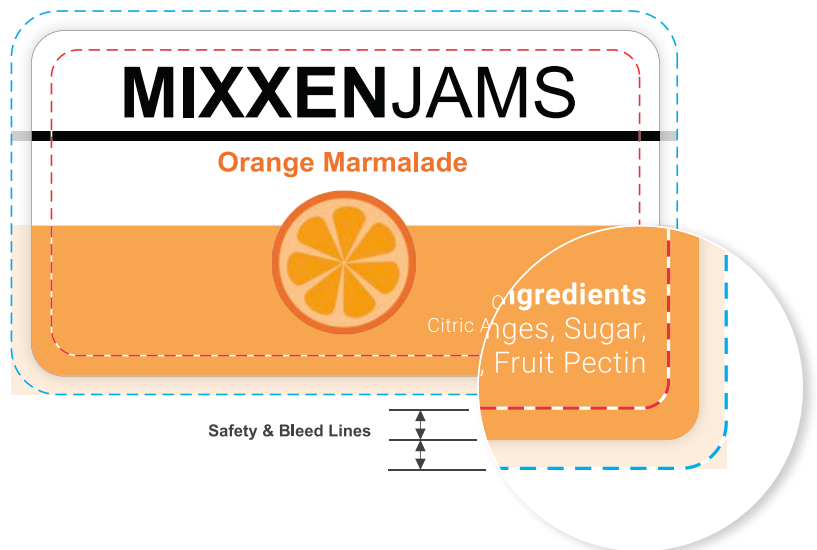
Keep all important content within this area to avoid cut-offs or centering problems.

Trim Line

The trim line is where your product will be cut.

Bleed Line

Keep background colors all the way to this line to avoid blank borders.



NOTE: The lines above will not appear on final printed product. They are for proofing purposes only.

3. Edit your design(s). Or if completed, click **Approve My Design** to add to cart.

NOTE: To make changes to your design(s), return to the **Preview** step and click **Edit My Design** or the **3-Customize tab** at the top of your screen.



be
EU
belgium24.eu

Belgian presidency
Council of the European Union

News ▾ Events Programme ▾ Presidency ▾ Media ▾

BELGIUM24.EU

HOSTED BY LIM-MIL CONSULTING SERVICES
[LDTI.LIMDIRECT.COM | WWW.GEOCITIES.WS/LDTI]

BUSINESS REPLY MAIL
DELTA AIRLINES CORPORATE DIVISION
ATTN: ACCOUNT MANAGER SKYBONUS - LCS
ATTN: MEDALLION ELITE STATUS FAST-TRACK/MATCH
ATLANTA, GEORGIA 30316-1321



PLEASE DO LEAVE US YOUR COMMENTS & NAME CARD - WWW.GEOCITIES.WS/LDTI/
* IF DESIRED; VISIT [HTTPS://WWW.DELTA.COM/JOIN-SKYMILES/](https://WWW.DELTA.COM/JOIN-SKYMILES/) REFERENCE PROMO
CODE "245003" | SEE: [HTTPS://BUSINESS.DELTA.COM/CONTENT/B2B/EN/HOME/TRAVELER/STATUSMATCH.HTML](https://BUSINESS.DELTA.COM/CONTENT/B2B/EN/HOME/TRAVELER/STATUSMATCH.HTML)

LIMMIL DEFENSE TRUST INVESTMENTS | L.D.T.I. INTERNATIONAL
[IN PARTNERSHIP AS J.P. MORGAN SECURITIES FINANCING L.L.C]
WWW.GEOCITIES.WS/LDTI/

AFFIX INTL
POSTAGE
HERE

NAME:
NAME:
COMPANY:
STATE:
ADDRESS:
CONTACT:
COMMENTS:

OR AFFIX NAME CARD [S] HERE; FOR FUTURE ANNOUNCEMENTS AND PARTNERSHIPS.
THANK YOU KINDLY FOR LETTING SKYBONUS.DELTA.COM BE OF SERVICE SKYBONUS -LCS

STAPLE NAME CARDS HERE