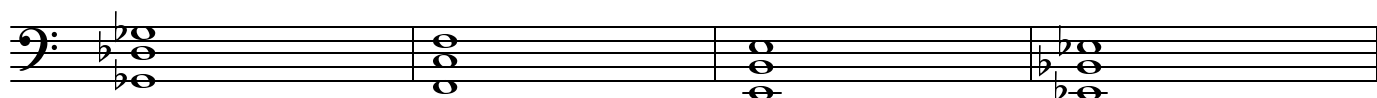
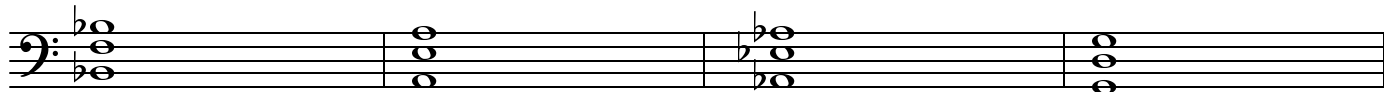
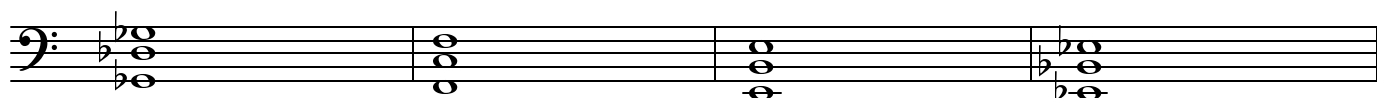
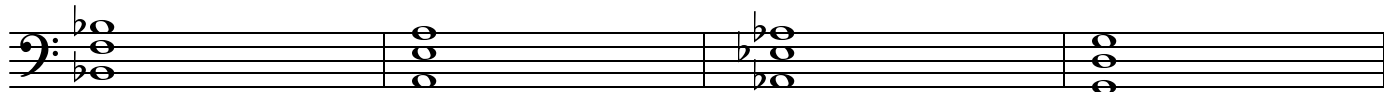


# Extreme Long Tones



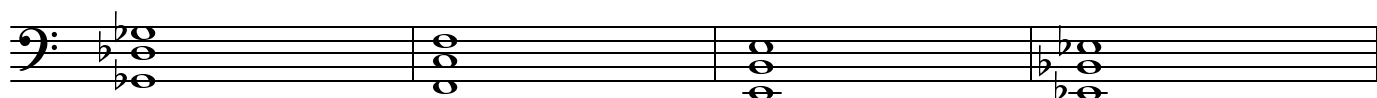
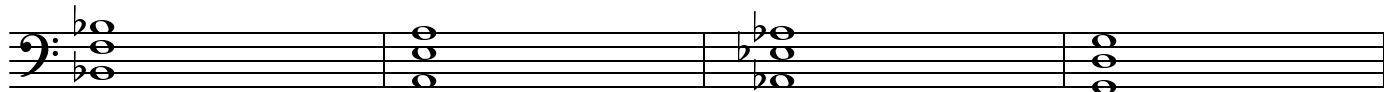
These exercises should be done at mp only! REPEAT EACH NOTE 3 TIMES!!! The MIDDLE line is the 1st exercise, the TOP line is the 2nd exercise and the BOTTOM line is the 3rd exercise. Start this exercise by taking a full, comfortable breath. Then using a "breath attack" begin the note and play it till you run out of breath, as you run out of breath do a gentle lift to release the note. Each note should have the best tone quality you can manage for the mp dynamic. Each note should (as much as possible) keep the same tone quality through-out.

# Extreme Long Tones



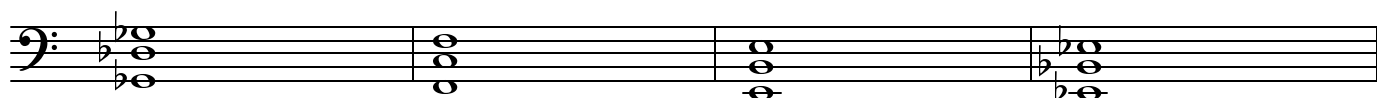
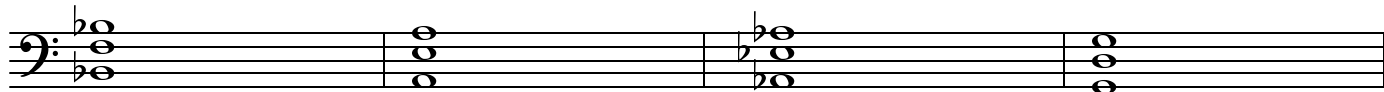
These exercises should be done at mp only! REPEAT EACH NOTE 3 TIMES!!! The MIDDLE line is the 1st exercise, the TOP line is the 2nd exercise and the BOTTOM line is the 3rd exercise. Start this exercise by taking a full, comfortable breath. Then using a "breath attack" begin the note and play it till you run out of breath, as you run out of breath do a gentle lift to release the note. Each note should have the best tone quality you can manage for the mp dynamic. Each note should (as much as possible) keep the same tone quality through-out.

# Extreme Long Tones



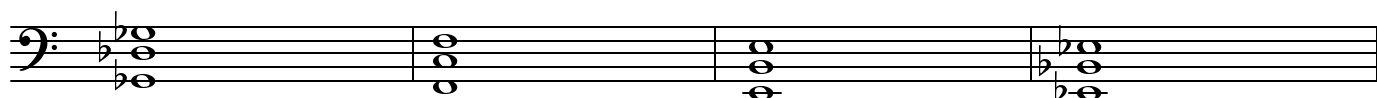
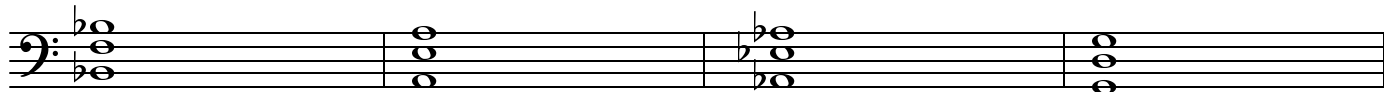
These exercises should be done at mp only! REPEAT EACH NOTE 3 TIMES!!! The MIDDLE line is the 1st exercise, the TOP line is the 2nd exercise and the BOTTOM line is the 3rd exercise. Start this exercise by taking a full, comfortable breath. Then using a "breath attack" begin the note and play it till you run out of breath, as you run out of breath do a gentle lift to release the note. Each note should have the best tone quality you can manage for the mp dynamic. Each note should (as much as possible) keep the same tone quality through-out.

# Extreme Long Tones



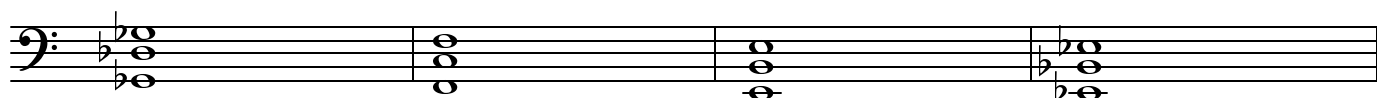
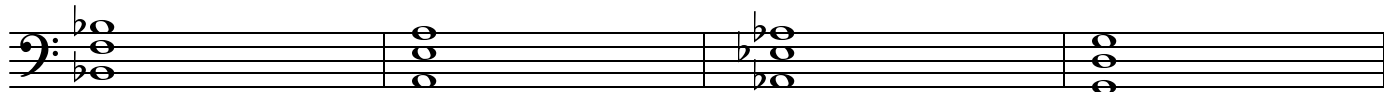
These exercises should be done at mp only! REPEAT EACH NOTE 3 TIMES!!! The MIDDLE line is the 1st exercise, the TOP line is the 2nd exercise and the BOTTOM line is the 3rd exercise. Start this exercise by taking a full, comfortable breath. Then using a "breath attack" begin the note and play it till you run out of breath, as you run out of breath do a gentle lift to release the note. Each note should have the best tone quality you can manage for the mp dynamic. Each note should (as much as possible) keep the same tone quality through-out.

# Extreme Long Tones



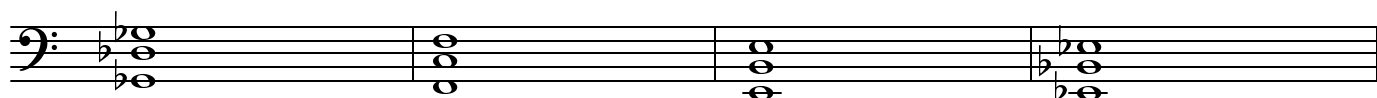
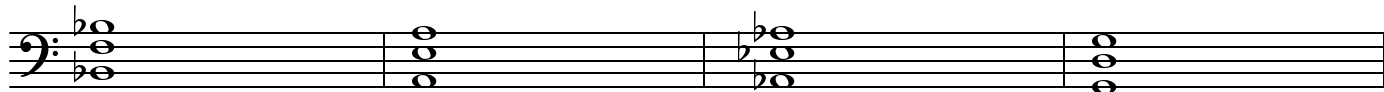
These exercises should be done at mp only! REPEAT EACH NOTE 3 TIMES!!! The MIDDLE line is the 1st exercise, the TOP line is the 2nd exercise and the BOTTOM line is the 3rd exercise. Start this exercise by taking a full, comfortable breath. Then using a "breath attack" begin the note and play it till you run out of breath, as you run out of breath do a gentle lift to release the note. Each note should have the best tone quality you can manage for the mp dynamic. Each note should (as much as possible) keep the same tone quality through-out.

# Extreme Long Tones



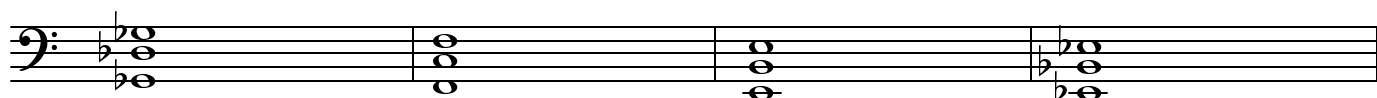
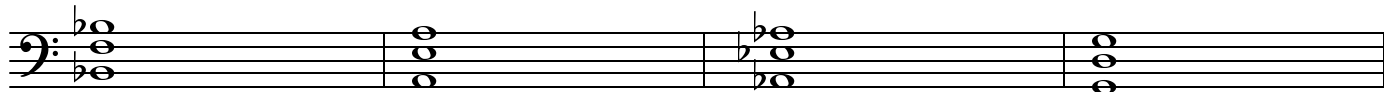
These exercises should be done at mp only! REPEAT EACH NOTE 3 TIMES!!! The MIDDLE line is the 1st exercise, the TOP line is the 2nd exercise and the BOTTOM line is the 3rd exercise. Start this exercise by taking a full, comfortable breath. Then using a "breath attack" begin the note and play it till you run out of breath, as you run out of breath do a gentle lift to release the note. Each note should have the best tone quality you can manage for the mp dynamic. Each note should (as much as possible) keep the same tone quality through-out.

# Extreme Long Tones



These exercises should be done at mp only! REPEAT EACH NOTE 3 TIMES!!! The MIDDLE line is the 1st exercise, the TOP line is the 2nd exercise and the BOTTOM line is the 3rd exercise. Start this exercise by taking a full, comfortable breath. Then using a "breath attack" begin the note and play it till you run out of breath, as you run out of breath do a gentle lift to release the note. Each note should have the best tone quality you can manage for the mp dynamic. Each note should (as much as possible) keep the same tone quality through-out.

# Extreme Long Tones



These exercises should be done at mp only! REPEAT EACH NOTE 3 TIMES!!! The MIDDLE line is the 1st exercise, the TOP line is the 2nd exercise and the BOTTOM line is the 3rd exercise. Start this exercise by taking a full, comfortable breath. Then using a "breath attack" begin the note and play it till you run out of breath, as you run out of breath do a gentle lift to release the note. Each note should have the best tone quality you can manage for the mp dynamic. Each note should (as much as possible) keep the same tone quality through-out.