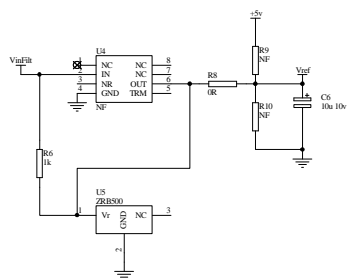
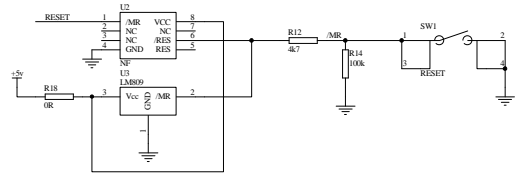


+5v Supply

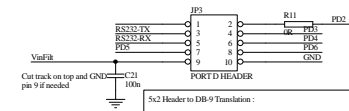
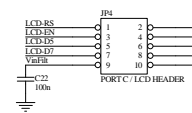
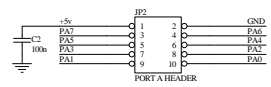
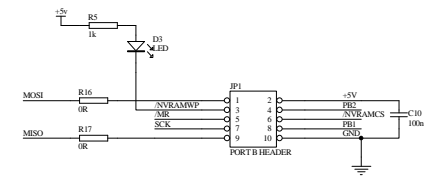
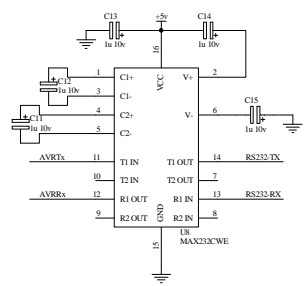


Voltage Reference

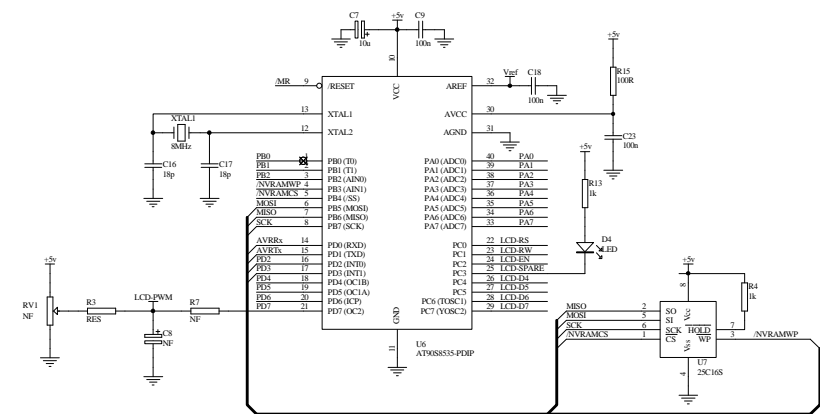


Reset Generator

RS232-Driver



I/O Headers



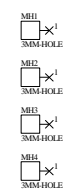
AVR and NVRAM

5x2 Header to DB-9 Translation :

Pin 1 -> Pin 1
Pin 2 -> Pin 6
Pin 3 -> Pin 2
Pin 4 -> Pin 7
Pin 5 -> Pin 3
Pin 6 -> Pin 8
Pin 7 -> Pin 4
Pin 8 -> Pin 9
Pin 9 -> Pin 5
Pin 10 -> NC

For Diag Cable :

Header Pin 3 -> DB9 Pin 2
Header Pin 5 -> DB9 Pin 3
Header Pin 9 -> DB9 Pin 5



Title		
Rev	Number	Revision
A2		
Date:	2/Jan/2002	Sheet of
File:	D:\Electronics\Projects\Temp\Controler\AVR_90S8515_PDP\Controler.dtb	