

2015



# CARRICULUM VITAE



**Er. VipinKumar Rajendra Pawar**

**Masters in Engineering- VLSI & EMBEDDED SYSTEMS  
(University of PUNE)**

E-Mail -: me@vipinpawar.in

Contact -: +91-78 75 899873

**www.vipinpawar.in**

MEMBER OF



MEMBERSHIP NO

8545093

**USA**



MEMBERSHIP NO

92821262

**USA**



MEMBERSHIP NO

156484

**HONGKONG**



MEMBERSHIP NO

AP-536

**USA**

यंत्र तंत्रादि विज्ञानम्, लोक-कल्याणम् साधनम्:

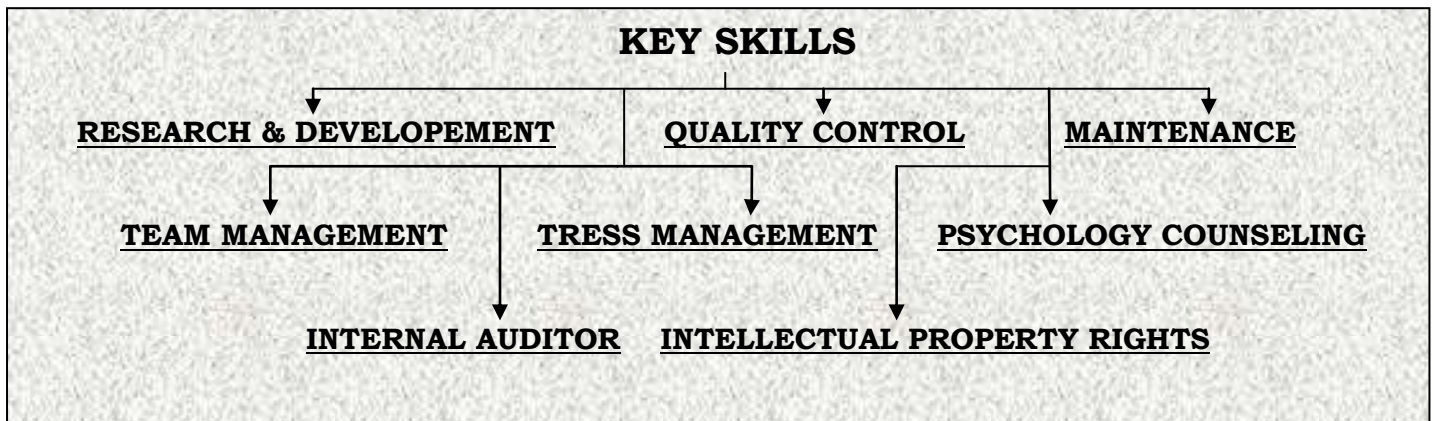


**A Better Today,  
A Brighter Tomorrow**

IN QUEST OF PROVIDE GOOD KNOWLEDGE IN TECHNOLOGY WITH  
AN ORGANIZATION OF HIGH REPUTE.

## SYNOPSIS

Proficient at executing good safety and health improvement practices for optimum utilization of resources and providing them with a safe working environment. Excellent interpersonal & negotiation skills with strong problem solving & organizational abilities.



## HIGHLIGHTED PROFILE

✓ Invited as **RESOURCE PERSON** for

- ❖ Workshop on “Microcontroller & **Embedded Systems**”(Dec’2015):- One day workshop conducted by **Kadwa polytechnic, Rajaramnagar, Dist. Nashik**
- ❖ Technical Paper Presented at National level **ePG-Conference-2014** on “**Wireless Rescue Caller & Data Analyzer**” at **K.K.Wagh College of Engineering & Research Centre, Nashik**
- ❖ State Level Workshop on “**PCB ARTWORK DESIGN**”(25<sup>th</sup> & 26<sup>th</sup> Nov’2013):- State Level Two days workshop conducted by **Sandip Polytechnic, Mahiravani, Dist. Nashik**
- ❖ Workshop on “**Embedded Systems & PCB Design**”(25<sup>th</sup> & 26<sup>th</sup> Nov’2013):- One day workshop conducted by **Kashinath Mengal Polytechnic, Ghoti, Dist. Nashik**

**ER.VIPINKUMAR RAJENDRA PAWAR**  
CONTACT-: +91-78 75 899873  
E-MAIL-: me@vipinpawar.in  
WEBSITE-: www.vipinpawar.in



## RESEARCH PUBLICATIONS

Research Paper Published/Present	Details
Paper Published on “Emotion Recognition from Hindi Speech using MFCC and Sparse DTW”	International Journal of Engineering Research & Technology (IJERT)/ ISSN: 2278-0181/ Volume. 4 - Issue. 06 , June - 2015
Paper Published on “Introduction-Wireless Local Area Sensor Network Protocol for Rescue Calling”	International Journal of Engineering Research & Technology (IJERT)/ ISSN: 2278-0181/ Vol. 3 Issue 6, June - 2014
Paper Presented on “Wireless Rescue Caller & Data Analyzer”	ePG-Conference-2014 at K.K.Wagh College of Engineering & Research Centre, Nashik

## TECHNICAL PROFILE

### Research & Development

- ⇒ Introduced innovative ideas for maintaining the Production & Quality ratio
- ⇒ Maintaining the Quality as per Industrial Standards.
- ⇒ Developing complex and tiny circuits for cost effectiveness and efficient.
- ⇒ Improving quality level of Design through updated reference book, Software & training programs related to Design..
- ⇒ Giving priority for Client requirement & Satisfaction.

### PCB Designing

- ⇒ Solving all types of curries regarding PCB Layout.
- ⇒ Maintaining the Production ratio.
- ⇒ Single sided and for complex design, double OR multilayered PCB can be design.
- ⇒ Improving quality level of Design through updated reference book, Software & training programs related to PCB artwork Design..
- ⇒ Giving priority for Client requirement & Satisfaction.

### Management

- ⇒ Improving contacts & relations with fastest growing firm to provide good quality of service.
- ⇒ Organize Client and Vendor meetings & event for better result & good reputation.
- ⇒ Organizing practical and theoretical training programs to enhance skills and motivational levels.
- ⇒ Maintaining the discipline and happy environment for team members.
- ⇒ Improving the skill and work efficiency of team

## PROFESSIONAL JOURNEY

- |                          |   |
|--------------------------|---|
| <b>❖ ORGANIZATION</b>    | <b>-:Anita's MicroSystems(INDIA)</b>  |
| <b>❖ DURATION</b>        | <i>-:01 February 2012 to Till Date</i>  |
| <b>❖ DESIGNATION</b>     | <b>-:Project Engineer</b>   |
| <b>❖ KEY DELIVERABLE</b> | <ul style="list-style-type: none"> <li>➤ Research on Technical Papers for legal aspects.</li> <li>➤ Knowledge of Project , Team Management, Maintenance of Equipments &amp; documentation of Project</li> <li>➤ Supervising the Assembly, Packaging and quality of product.</li> <li>➤ Conducting troubleshooting activities including training for workers and testing of product.</li> <li>➤ Knowledge of instruments used for project Assessment.</li> <li>➤ Working with continuous improvement team.</li> <li>➤ Basic documentation for Audit</li> </ul> |
| <b>❖ ORGANIZATION</b>    | <b>-:A.P.Enterprises(Bajaj Electrical Vendor Company)</b>   |
| <b>❖ DURATION</b>        | <i>-:01<sup>st</sup> November 2011 to 31<sup>st</sup> December 2012</i>   |
| <b>❖ DESIGNATION</b>     | <b>-: Plant Supervisor</b>  |
| <b>❖ KEY DELIVERABLE</b> | <ul style="list-style-type: none"> <li>➤ Knowledge of Quality Control, Team Management, Maintenance &amp; packaging Department.</li> <li>➤ Supervising the shift to achieve daily production plan with desired quality of product.</li> <li>➤ Conducting troubleshooting activities in daily Quality including training for workers and testing of product.</li> <li>➤ Knowledge of instruments used for testing the product for Quality.</li> <li>➤ Working with continuous improvement team.</li> </ul>   |

## ACADEMIC REPORT

COURSE	BRANCH / SPECIALIZATION	BOARD / UNIVERSITY	YEAR of Passing	%/CGPA
PhD	WSN	CENTRAL UNIVERSITY OF GUJRAT	PET CRACKED	NATIONAL RANKED 54
<b>Masters in Engineering</b>	VLSI & EMBEDDED SYETMS	University of PUNE	2014	<b>7.25 CGPA</b>
<b>Bachelors of Engineering</b>	Electronics & Telecommunication	University of MUMBAI	2011	60.19%.
<b>HSC</b>	Science	Maharashtra State Board	2005	63.17%
<b>SSC</b>	Hindi-Sanskrit	Maharashtra State Board	2003	62.66%



## IT KEY SKILLS





SOFTWARE	SPECIFICATIONS	EXPER LEVEL out of 5(*****)
• <b>MultiSim</b>	: Electronics Circuit Simulation	*****
• <b>ProteUs</b>	: Digital Electronics Circuit Simulation	*****
• <b>Eagle PCB</b>	: PCB layout designer software	*****
• <b>Xilinx ISE</b>	: VLSI based circuit simulation	**
• <b>Microsoft Office</b>	: Office documentation	****
• <b>EdSim51</b>	:Assembly Programmer for 8051	*****
• <b>MPLAB</b>	:Assembly & C Programming for PIC Controllers	****
• <b>MATLAB</b>	:Advanced Coding for Engineering	***
• <b>Keil MDK</b>	: C Editor/Assembler/Debugger for 8051 & ARM7,9,10,11(CORTEX)	*****
• <b>VISUAL STUDIO</b>	Visual Basics IPE	***

## CERTIFICATES & ACHIEVEMENT

Certificate Topics	Workshop /seminar	Locations	Durations
<b>MATLAB &amp; It's Applications</b>	Workshop	Department of E&Tc Engg., Sandip Polytechnic, Nashik	<u>23<sup>rd</sup> &amp; 24<sup>th</sup> January'2014</u>
<b>Artificial Neural Network</b>	Seminar	SND College of Engineering & Research Centre, Yeola, Dist. Nashik	<u>8<sup>th</sup> &amp; 9<sup>th</sup> March'2013</u>
<b>Web Designing</b>	Diploma	IT Professionals, Nashik	<u>11<sup>th</sup> Oct. 2012 to 22<sup>nd</sup> January'2013</u>
<b>Hardware &amp; Networking Engineering</b>	Diploma	IT Professionals, Nashik	<u>11<sup>th</sup> Oct. 2012 to 11<sup>th</sup> December'2012</u>
<b>Embedded Robotics</b>	Workshop	Department of Instrumentation Science, University of PUNE	<u>6<sup>th</sup> &amp; 7<sup>th</sup> October'2012</u>
<b>Embedded Systems Developer</b>	Diploma	PROLIFIC AUTOMATION, CHINCHWAD, PUNE	<u>11<sup>th</sup> July 2011 to 22<sup>nd</sup> Sep.'2011</u>
<b>Cisco Certificate Network Administration</b>	Seminar	IETE Students forum and SMT. Indira Gandhi College of Engineering, Navi Mumbai	<u>16<sup>th</sup> April'2010</u>
<b>राष्ट्रभाषा बालबोधिनी</b>	Competitive Exam	Maratha High School, Nashik	<u>Sept.'1997</u>

## EMBEDDED SYSTEMS PROTOTYPES

<p>❖ <b>NAME OF PROJECT</b></p> <p>❖ <b>KEY ROLE</b></p> <p>❖ <b>TOOLS USED</b></p> <p>❖ <b>DETAILS</b></p>	<p>-: <b>WIRELESS RESCUE CALLER &amp; DATA ANALYZER</b></p> <p>-: Fire, Hazardous GAS leakage, Unauthorized Entry and calls Ambulance, Police &amp; Fire Brigade for Rescue operation.</p> <p>-: Proteus, MultiSim, Eagle 6.1</p> <p>-: Especially Designed for Industrial as well as residential areas for providing alert message when accident is going to occurred as Fire, Hazardous GAS leakage, Unauthorized Entry and calls Ambulance, Police &amp; Fire Brigade for Rescue operation.</p>
<p>❖ <b>NAME OF PROJECT</b></p> <p>❖ <b>KEY ROLE</b></p> <p>❖ <b>TOOLS USED</b></p> <p>❖ <b>DETAILS</b></p> 	<p>-: <b>RS-232 to USB Serial Communication (Module)</b></p> <p>-: Designed for Laptops which do not have Serial port(DB-9 Connector).</p> <p>-: Proteus, Eagle 6.1</p> <p>-: Convert RS-232 serial data to USB synchronous Serial Data</p>
<p>❖ <b>NAME OF PROJECT</b></p> <p>❖ <b>KEY ROLE</b></p> <p>❖ <b>TOOLS USED</b></p> <p>❖ <b>DETAILS</b></p> 	<p>-: <b>Infrared Object Detector (Module)</b></p> <p>-: Object tracking, Counter circuit, Unauthorized entry detectors..etc.</p> <p>-: Proteus, MultiSim, Eagle 6.1</p> <p>-: Sense the object comes near to Module and gives positive pulse to Interfacing Device like <math>\mu C</math>, <math>\mu P</math>, etc.</p>
<p>❖ <b>NAME OF PROJECT</b></p> <p>❖ <b>KEY ROLE</b></p> <p>❖ <b>TOOLS USED</b></p> <p>❖ <b>DETAILS</b></p>	<p>-: <b>Remote Controlled HOME AUTOMATION SYSTEM</b></p> <p>-: RC-05 Protocol Follower System</p> <p>-: Proteus, Eagle 6.1</p> <p>-: RC-05 Protocol Follower systems can drive lots of Relays as per the requirement of User/Consumer driven by AT89C2051/AT89C89C51/AT89S52 <math>\mu C</math>.</p>

 <p>❖ <b>NAME OF PROJECT</b></p> <p>❖ <b>KEY ROLE</b></p> <p>❖ <b>TOOLS USED</b></p> <p>❖ <b>DETAILS</b></p> 	<p>-: <b>UltraSonic Distance Tracker (Module)</b></p> <p>-: Sense the object comes near to Module and calculate the distance in centimeter(cm.) &amp; send the result to Computer port via RS-232(DB-9)</p> <p>-: Proteus, Eagle 6.1</p> <p>-: Object tracking, Distance calculator..etc.</p>
<p>❖ <b>NAME OF PROJECT</b></p> <p>❖ <b>KEY ROLE</b></p> <p>❖ <b>TOOLS USED</b></p> <p>❖ <b>DETAILS</b></p> 	<p>-: <b>Anti-collision Vehicle Module</b></p> <p>-: Especially Designed for Industrial as well as residential trailer or Car for preventing collision with wall/another vehicle</p> <p>-: Proteus, Eagle 6.1</p> <p>-: Senses object come into the path of vehicle and automatically Apply the breaks</p>
<p>❖ <b>NAME OF PROJECT</b></p> <p>❖ <b>KEY ROLE</b></p> <p>❖ <b>TOOLS USED</b></p> <p>❖ <b>DETAILS</b></p> 	<p>-: <b>Wireless Multiple Detector</b></p> <p>-: Especially Designed for Industrial as well as residential areas for providing Alert message when accident is going to occurred</p> <p>-: Proteus, Eagle 6.1</p> <p>-: Senses Fire, Hazardous GAS leakage, Unauthorized Entry and Calls Ambulance, Police &amp; Fire Brigade for Rescue operation.</p>  
<p>❖ <b>NAME OF PROJECT</b></p> <p>❖ <b>KEY ROLE</b></p>	<p>-: <b>VKz 8x8 DOT Matrix LED Display</b></p> <p>-: AMS8X8AB is a kind of integrated serial input/ output common cathode display driver, it connects microprocessor and 8-digit seven period of digital LED display, also can be connected to the bar graph display or 64 independent LED. Easy to interface with arduino, Raspberry Pi or any other microcontroller.</p>

❖ **TOOLS USED**  
❖ **DETAILS**



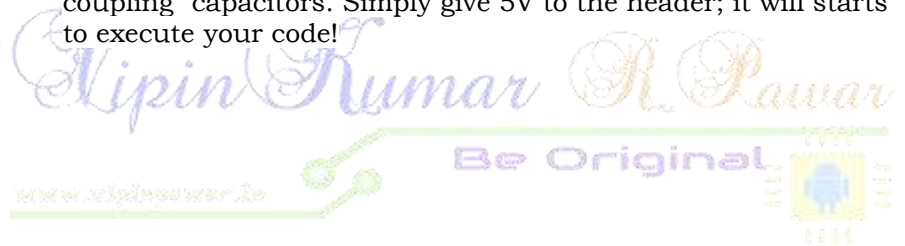
- : Proteus, Eagle 6.1
- :

  1. Brand new AMS8X8AB Red LED Dot Matrix Module MCU Control Module
  2. A single module can drive one 8x8 common cathode lattice
  3. With 4 fixed screw holes for easy installation
  4. Module with input and output interfaces, supports multiple modules cascade
  5. Great for projects DIY

❖ **NAME OF PROJECT**  
❖ **KEY ROLE**  
❖ **TOOLS USED**  
❖ **DETAILS**



- : **VKz LPC2148 ARM Header Board**
- : Low Cost Board that can be used to quickly evaluate and demonstrate the capabilities of NXP LPC2148 (ARM7TDMI) microcontroller.
- : Proteus, Eagle 6.1
- : The Header board is designed as DIP package with access to all Port pins for external connection. The LPC2148 ARM Header Board consists all basic components required to function the microcontroller. The board is populated with voltage regulators, RTC crystal ,Main Crystal and necessary de-coupling capacitors. Simply give 5V to the header; it will starts to execute your code!



❖ **NAME OF PROJECT**  
❖ **KEY ROLE**  
❖ **TOOLS USED**  
❖ **DETAILS**



- : **VKz Wireless Door Break Sensor**
- : Transmits unique ID for brief moment when magnet goes far of internal reed switch. Useful as door window entry wireless alarm. RF transmitter at 433 Mhz, around 100 meters range
- : Proteus, Eagle 6.1
- : Each unit has unique 32 bit ID, which is transmitted on 433 Mhz frequency upon detection of door/window opening. The sensing concept is magnetic reed switch which gets triggered when distance between two units increase more than 1.5cm. One unit has magnet inside and another has reed switch which senses the magnet.

## PCB PROTOTYPES

DESIGN	COMPLEXITY	PCB MATERIAL
<b>Sensor Node(Rescue Caller)</b>	2 Layer	Paper Phenolic
<b>Master Node(Rescue Caller)</b>	2 layer	Paper Phenolic
<b>Ultrasonic Distance Meter</b>	2 layer	Glass Epoxy
<b>IR sensor(Home Automation)</b>	1 layer	Paper Phenolic
<b>RS-232 to USB Serial Communication (Module)</b>	1 layer	Glass Epoxy
<b>Infrared Object Detector (Module)</b>	1 layer	Paper Phenolic
<b>Wireless Multiple Detector</b>	1 layer	Paper Phenolic
<b>LED Emergency Lamp</b>	1 layer	Paper Phenolic
<b>LED &amp; 7-Segment combination module</b>	2 layer	Glass Epoxy
<b>AT89C51RD2 Trainer Kit</b>	1 layer	Glass Epoxy
<b>LED add-on card</b>	1 layer	Glass Epoxy
<b>Anti-Collision Robot mother board</b>	2 layer	Glass Epoxy
<b>DC Motor Controller (Module)</b>	1 Layer	Glass Epoxy
<b>Robot car motherboard</b>	1 Layer	Paper Phenolic
<b>Robotics SMPS</b>	2 layer	Glass Epoxy
<b>Led matrix array decoder</b>	1 layer	Paper Phenolic
<b>VKz Wireless Door Break Sensor</b>	2 layer	Glass Epoxy
<b>VKz LPC2148 ARM Header Board</b>	2 layer	Glass Epoxy
<b>VKz 8x8 DOT Matrix LED Display</b>	1 layer	Paper Phenolic

## PERSONAL INFORMATION

- ❖ **FULL NAME**                                -: **Er. VipinKumar Rajendra Pawar**
- ❖ **DATE OF BIRTH**                            -: 18<sup>th</sup> August 1987
- ❖ **BIRTH PLACE**                                -: Kopargaon, Dist. Ahamad Nagar, Maharashtra, India
- ❖ **HOBBY**                                        -: \* TRAVELING  
\* DRIVING  
\* Reading Marathi Novels  
\* Net Surfing  
\* Walking  
\* Gardening
- ❖ **PERMANENT ADDRESS**                    -: 4, Roop-Sangam society-B  
Snehanagar, Dindori Road,  
Mhasrul, Nashik, Maharashtra, INDIA-422004
- ❖ **CONTACT NUMBER**                        -:  +91-78 75 899873  
-:  (0253)2532396
- ❖ **EMAIL**                                        -:  me@vipinpawar.in  
-:  vipinkumar.pawar@gmail.com  
-:  vipinkumar\_pawar@yahoo.co.in
- ❖ **WEBSITE**                                    -: **www.vipinpawar.in**

**Place-:** Nashik

**Date-:**        /        /201



**ER.VIPINKUMAR RAJENDRA PAWAR**

CONTACT-: +91-78 75 899873

E-MAIL-: me@vipinpawar.in

WEBSITE-: www.vipinpawar.in

