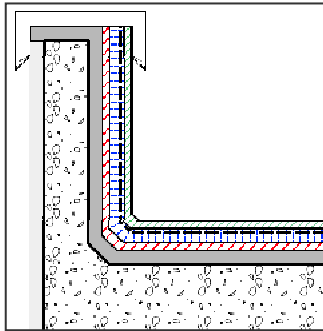


COOL-DECK™ 5 COOL ROOF TECHNOLOGY SYSTEM

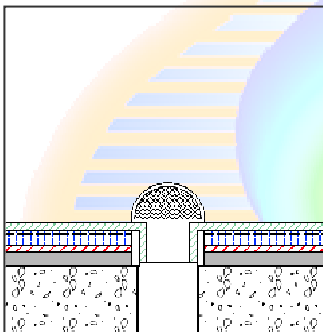
5 YEARS WARRANTY. EXPOSED SEAMLESS WATERPROOFING AND HEAT INSULATION

TYPICAL DETAILS



“U” VALUE CALCULATION

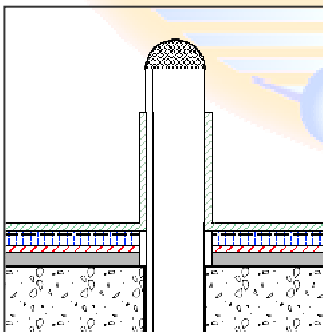
COMPONENT	Thk/“K”	“R”
Outside Air Film	-	0.0550
SolarTec Solar Heat Reflective Insulation	0.01	0.1200
Waterproofing Screed 50mm to fall (75mm – 25mm)	0.050/0.533	0.0940
200mm Thick Concrete Slab	0.200/1.442	0.1390
Inside Air Film (Low E)	-	0.8010
TOTAL		1.2090



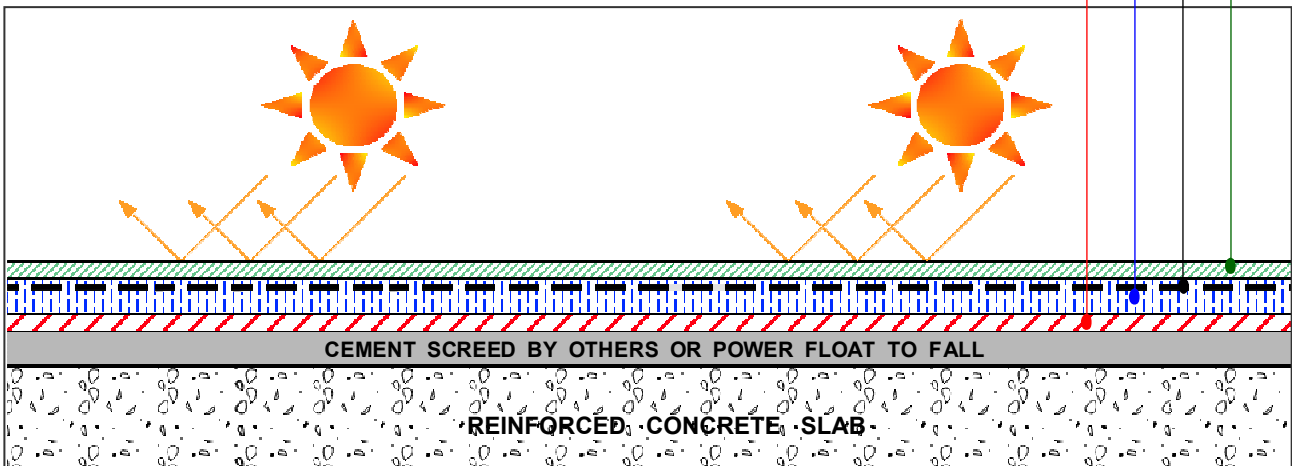
“U” VALUE = 1/R = 11.22 = 0.8246 W/m²K

WEIGHT OF ROOF = (1568 X 0.006) + (2500 X 0,2) = 504.4 kg/sqm

Comply with the “U” value for heavy weight roof. Does not exceed 1.2 – 1.5 W/m²K



- TOPCOAT _____ (4)
- SOLARTEC EB, WATERPROOF HEAT INSULATION**
- FIBRE SURFACING MESH FABRIC _____ (3)
- BODYCOAT _____ (2)
- SOLARTEC WX2, BPU WATERPROOFING**
- UNDERCOAT _____ (1)
- SOLARTEC CP, CONCRETE PRIMER**



COPYRIGHT © 2004 BY S*TECHNO INTERNATIONAL PTE LTD, 2004.1.1 EDITION. ALL RIGHTS RESERVED.
NO REPRODUCTION IN WHOLE OR PART ALLOWED WITHOUT WRITTEN PERMISSION.