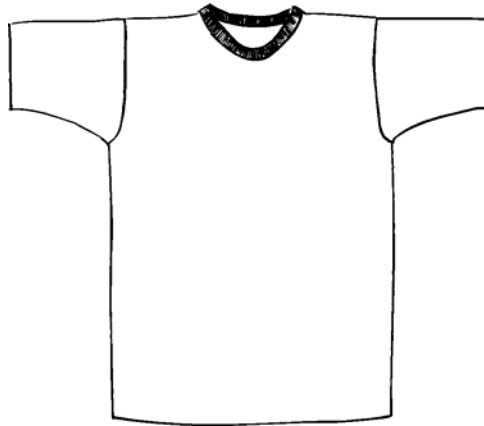


5170
HANES
Heavyweight
50/50 T-Shirt



Descriptions

- *50/50 Poly cotton, 5.6 ounce
- *20 Singles
- *Double needle sleeve and bottom hem
- *Screenprint and embroidery recommended

Finished Garment Measurements

Size	S	M	L	XL	2XL	3XL
Width	18	20	22	24	26	28
Length	27.25	28.25	29.25	30.25	30.75	31.25
Shoulder Width	17 1/8	19 1/8	21 1/8	23 1/8	25 1/8	27 1/8
Sleeve Length from CB	16 1/8	17 5/8	19 1/8	20 5/8	22 1/8	23 5/8

29LS
JERZEES
Long Sleeve
T-Shirt



Descriptions

- *50/50 cotton/poly, 5.5 ounces
- *20 Singles
- *Taped shoulder to shoulder
- *Set in sleeves
- *Ribbed collar & cuffs
- *Double needle hemmed sleeves and bottom
- *Embroidery and screenprinting okay

Finished Garment Measurements

Size	S	M	L	XL	2XL	3XL
Width	18	20	22	24	26	28
Length	27 ½	28 ½	30 ½	31 ½	32 ½	33 ½
Sleeve Length	34 ½	35 ½	36 ½	37 ½	38 ½	39 ½

996M

JERZEES

Midweight Pullover

Hooded Sweatshirt



Descriptions

*50/50 poly cotton Nublend, 8 ounce fleece

***Double lined hood with grommet**

*Matching draw cord

*Cover seamed waistband

*Ribbed cuffs and waistband

*Muff pocket

*Set in sleeves

*Screen printing or embroidery okay

Finished Garment Measurements

Size	S	M	L	XL	2XL	3XL
Width	20	22	24	26	28	30
Length	27	28	29	30	31	32

562M
JERZEES
8 oz Crewneck
Sweatshirt



Descriptions

- *50/50 poly cotton NuBlend fleece, 8 ounce fleece
- *Coverseamed neck and armholes
- *Set in sleeves
- *Ribbed Spandex in cuffs, collar & waistband
- *Embroidery & screenprinting okay

Finished Garment Measurements

Size	S	M	L	XL	2XL	3XL	4XL
Width	20	22	24	26	28	30	32
Length	26	27	28	29	30	31	32
Sleeve Length	35	36	37	38	39	40	41

973M
JERZEES
8 oz Sweatpant



Descriptions

- *50/50 Cotton poly NuBlend 8 ounce fleece
- *Double needle stitched covered elastic waist w/ interior drawcord
- *Elastic cuffs
- *Embroidery or screenprinting okay

Finished Garment Measurements

Size	S	M	L	XL	2XL	3XL
Waist (relaxed)	13	14	15	16	17	18
<i>Inseam</i>	30 ½	31	31 ½	32	32 ½	33