

# SHUT-OFF AND GAS DAMPER

## Halton UTG for shut-off and balancing

Halton UTG dampers are used to shut-off and balance airflow rates in high pressure ductwork. Dampers meet international standards for rectangular and round ducts. In the open position, the blades face the direction of flow and do not cause a significant pressure loss.

The UTG is used as a shut-off, gas and balancing damper in applications where tightness and reliability are important. The UTG damper leakage class is 3 according to the prEN1751 standard.

### Features

- Outer frame of galvanized, painted or stainless steel. Blades of galvanized or stainless steel with double sheet construction, silicon sealings. Maintenance-free stainless steel bearings and shafts. Bronze bearings available as an option.
- Leakage class of closed damper according to prEN 1751 class 3
- For shut-off and balancing of air intake and exhaust
- Automatic electrical, pneumatic or manual operation system available
- UTG dampers can be supplied with connection pieces for round duct
- Maximum operation pressure 5000 Pa and maximum velocity 15 m/s

### UTG dimensions and material thickness

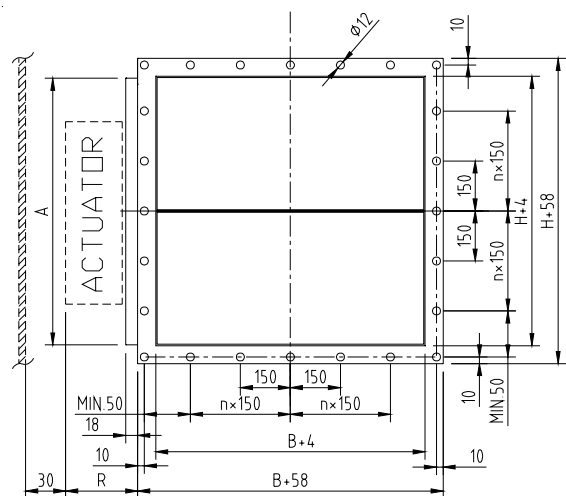
UTG shut-off, gas and balancing dampers meet international standards for both rectangular (width B 100-1200 mm and height H 100-1200 mm) and circular ducts (Ø100-1250 mm). Modular construction sizes available up to 2400X2400 mm. Special non-standard dimensions are available on request. Casing thickness 3 mm.

### Actuator effect on dimensions

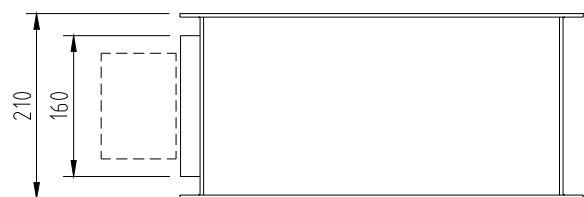
ACTUATOR		DIMENSIONS	
		R	A
Manual	Handle	95	H
Electrical	BF24 or BF230	90	H
Pneumatic PNL	Linear actuator 245/300 N	110	H <sub>≤500</sub> = 500, H <sub>&gt;500</sub> = H
Pneumatic PNR	Pneumatic rotating actuator	170	H



General UTG drawing



General UTG drawing, top



General UTG drawing, circular connections

