



DCW LIMITED

2 X 25 MW COGENERATION POWER PLANT
SAHUPURAM, TAMIL NADU

MONTHLY PROGRESS REPORT
Up to 25th March 07

REPORT - 07

THERMAX LIMITED
COGEN DIVISION

PUNE



INDEX

SECTION	DESCRIPTION
1.	PROJECT INFORMATION
2.	EXECUTIVE SUMMARY
2.01	Project at a glance
2.02	Project status in brief
2.03	Analysis of Project Plan
2.04	Areas of concern
2.05	Inputs required from Customer
2.06	Milestone chart
2.07	Project Progress Photographs
3.	PACKAGEWISE PROGRESS
3.01	Steam Turbine Generator (Unit 1 & 2) –incl. STG Building areas
3.02	Boiler - AFBC (Unit 1 & 2)
3.03	Water System
3.04	Cooling Water System
3.05	Electrostatic Precipitator (Unit 1 & 2)
3.06	Chimney
3.07	Coal Yard
3.08	Roads
4.	CALENDAR OF MAJOR EVENTS
5.	OTHER VITAL / MISCELLANEOUS INFORMATION
5.01	Status of Enabling works
6.	ANNEXURES
Annex. I	Submission of Drawings / Documents to Customer
Annex. II	Drawings / Documents Released
Annex. III	Procurement List
Annex. IV	Plan for April 2007
Annex. V	Plan for May 2007
Annex. VI	Updated Project Plan – L1 schedule



1. PROJECT INFORMATION

Owner : DCW LIMITED

Project : 2 X 25 MW Cogeneration Power Project

Site : Sahupuram, Tamil Nadu

Effective Date of Contract : 03rd April 2006

Major Inputs from Customer:

- Clear land for Construction
- Construction power and water
- Accommodation for TIL Engineers deployed at site
- Start-up power & water
- Effluent disposal system beyond TL`s terminal point
- Power evacuation system
- Supply of all fuels
- O & M Personnel
- Statutory Clearances (except IBR, Labour and Electrical Inspectorate)



2. EXECUTIVE SUMMARY

2.01 Project at glance

Sr.	Description	Date
1	Project Zero Date	03-Apr-2006
2	Contractual Completion Date	02-Feb-2008
3	Expected Completion Date	02-Feb-2008

2.02 Project Status in brief

All basic engineering drawings & documents are submitted and cleared for further engineering.

Piling Drawings for STG Building, STG Foundations, Chimney, Ash Silo, Boilers, Crusher house, BFP, FD, PA & ID fan etc. released for construction. Pile cap drawings released for STG Building, STG foundation, Boilers, ESP and Chimney.

RCC drawings for Boiler (EL +6.600), STG (EL +3.960), Fuel handling area – Conveyer foundation, Neutralization pit, DM water tank/ Process condensate tank, WTP area equipment foundation released for construction.

Orders placed for Major equipments & BOP instruments like Instrumentation cable & NIBR pipes & fittings.

Offers received for LT switchgear, ACVFD Drive Panel, NIBR pipes.

Status of Piling work at site is as follows: -

Boiler – 1 area	:	62/65 completed
Boiler – 2 area	:	All 65 completed
STG – area	:	All 139 completed
STG Foundation	:	All 48 completed
Coal Bunker	:	All 21 completed
FW pump	:	All 16 completed
ESP	:	23/50 completed

In all 406/643 piles have been casted at site.

2.03 Analysis of Project Plan

Piling activity was initially affected due to heavy rains and DMC method, which has caused a delay in start of construction activities. Even though the start of construction of Chimney has been delayed, civil construction works is being expedited, so that Boiler commissioning is not affected.

The delay in start of Civil Works has delayed the expected start of erection of Cooling Tower; this will consecutively delay the commissioning of cooling Water system.

2.04 Recovery Plan

We are working towards an aggressive construction plan and any delays whatsoever in Chimney & Cooling Water System will be recovered during the execution phase.



2.04 Areas of Concern

- Closing of Commercial agreement/ contract
- Release of pending advances
- LC Enhancement for Civil work

2.05 Input required from Customer

- Nil

2.06 MILESTONE CHART



Customer: DCW Limited, Sahapuram, TN
Project: 2 x 25 MW Cogen Power Plant

CONTRACTUAL MILESTONES CHART

Sr	MILESTONE	BASELINE PLAN		ESTIMATE PLAN / ACTUAL DATES	
		UNIT-1	UNIT-2	UNIT-1	UNIT-2
1	EFFECTIVE DATE OF CONTRACT	03-Apr-06		03-Apr-06	
2	START OF PILING	07-Sep-06		01-Sep-06	
3	BOILER ERECTION START	18-Apr-07	17-Jun-07	Est. 18-Apr-07	Est. 17-Jun-07
4	DM PLANT COMMISSIONING	01-Aug-07		Est. 01-Aug-07	
5	READINESS OF COOLING WATER SYSTEM	12-Sep-07		Est. 08-Nov-07	
6	STG ERECTION START	27-Sep-07	17-Nov-07	Est. 27-Sep-07	Est. 17-Nov-07
7	BOILER HYDRO TESTING	30-Sep-07	29-Nov-06	Est. 30-Sep-07	Est. 29-Nov-07
8	READINESS OF ASH HANDLING SYSTEM	31-Oct-07		Est.05-Nov-07	
9	BOILER LIGHT UP/ SLOW FIRING	04-Nov-07	03-Jan-08	Est. 04-Nov-07	Est. 03-Jan-08
10	READINESS OF FUEL HANDLING SYSTEM	12-Nov-07		Est. 12-Nov-07	
11	BOILER - SAFETY VALVE FLOATING	24-Nov-07	23-Jan-08	Est. 24-Nov-07	Est. 23-Jan-08
12	SYNCHRONISATION OF STG	02-Dec-07	02-Feb-08	Est. 02-Dec-07	Est. 02-Feb-08

Notes:

Est. Estimated Dates

2.07 Project Progress Photographs



RCC STRUCTURE FOR BOILER 1



RCC STRUCTURE FOR BOILER 2

2.07 Project Progress Photographs



CHIMNEY RAFT



BC BAY – STG BUILDING

3. PACKAGEWISE PROGRESS

3.01 STEAM TURBINE GENERATOR – Unit 1 & 2 (incl. STG Building)

3.01.1 ENGINEERING:

Revisions for following drawings / Documents are submitted by TDPS to Cogen

- Turbine junction box dwg
- GA & schematics dwg of metering & synchronizing panel
- Datasheet for instrumentation cable
- Specification of control valves
- Specification of Flow elements

3.01.2 MANUFACTURING:

Following is the status of Boiler Manufacturing

- Turbine casing, rotor & blades machining in progress
- Generator Rotor manufacturing in progress
- Fabrication of HP, LP Heater in progress
- Fabrication of condenser is in progress
- Manufacturing of CEP is in progress
- Manufacturing of Gland steam condenser

3.01.3 CONSTRUCTION:

Following is the status of works executed at site

- Piling works in STG building area completed.
- Up to column 2nd lift (11/16) completed in STG building – BC bay.
- Raft casing in progress in AB bay
- All piles completed for STG Deck.

3.02 BOILER (AFBC) – Unit 1 & 2

3.02.1 ENGINEERING:

Following Drawings / Documents are submitted by Thermax B&H to Cogen

- Pressure parts assembly drawing
- Piping GA
- Specification of ACVFD

3.02.2 MANUFACTURING:

Following is the status of Boiler Manufacturing

- Water wall panels fabrication in progress
- Steam drum manufacturing in progress
- Economiser & Superheater coils fabrication in progress
- Manufacturing of BFW pump in progress

3.02.3 CONSTRUCTION

Following is the status of works executed at site

Boiler – 1

- 62/ 65 Piles completed for Boiler # 1.
- 11/25 columns completed up to first lift, 11/25 columns completed up to 2nd lift.

Boiler - 2

- All 65 Piles completed for Boiler # 2
- Slab at 2.8m is casted
- 19/25 Columns completed in first lift, 16/25 columns completed in 2nd lift, & 10/25 columns completed in 3rd lift.

3.03 WATER SYSTEM

3.03.1 CONSTRUCTION:

Following is the status of works executed at site

- Retaining wall – completed.
- Soil & gravel filling – 95% completed.
- PCC – 85% completed.
- Reinforcement fixing for raft in progress.

3.04 COOLING WATER SYSTEM

3.04.1 PROCUREMENT

Following materials dispatched

- Fan assembly
- Drive shaft with coupling
- Drift eliminators

3.04.2 CONSTRUCTION:

Following is the status of works executed at site

- Raft completed for Cell No. 1,2,3, 4 & sump.
- 21/48 Columns completed in first lift & 12/48 columns completed in 2nd lift.
- Wall shuttering & casing in progress.

3.05 ELECTROSTATIC PRECIPITATOR – Unit 1 &2

3.05.1 MANUFACTURING:

Following is the status of ESP manufacturing

- TR set manufacturing in progress
- Control panel

3.05.2 PROCUREMENT

Following materials dispatched

- Support structures
- Collecting plate hanging arrangement
- Casing & penthouse assembly
- HV assembly & TR set baseframe



3.06 CHIMNEY

3.06.1 CONSTRUCTION:

Following is the status of site activities of Chimney

- Pile chipping completed.
- Raft casting completed.

3.07 COAL YARD

3.07.1 CONSTRUCTION:

Following is the status of site activities of Coal yard

- West side : 13/19 Columns completed in first lift & 6/19 columns completed in 2nd lift.
- East side : 8/19 Excavation & PCC completed.

3.08 ROADS

3.08.1 CONSTRUCTION:

Following is the status of site activities for Road work:

Leveling	:	985/1030m completed
Soling	:	945/1030m completed
Murrum Filling	:	925/1030m completed
Consolidation	:	520/1030m completed
WBM 1 st Layer	:	160/1030m completed



4. CALENDAR OF MAJOR EVENTS

Sr. no	Description of Major Event	Date
1	Meeting for Change / Finalization of Power Plant Specifications / Capacity	22 nd May 2006
2	Kick-off meeting with Boiler Vendor	01 st Jun 2006
3	Kick-off meeting with DCW	20 th and 21 st Jun 2006
4	Kick-off meeting with TDPS	07 th Jul 2006
5	Kick-off meeting with Thermax Enviro	17 th Jul 2006
6	Kick-off meeting with SNM	28 th Aug 2006
7	Bhoomi Pooja	31 st Aug 2006
8	Start of Piling Works	01 st Sep 2006
9	Project Review Meeting	12 th Sep 2006
10	Construction Activities on hold	12 th Sep 2006
11	Release of hold for construction activities	12 th Oct 2006
12	Civil Contractor performed Pooja	15 th Dec 2006
13	Mechanical contractor for pipe rack performed Pooja	23 rd Mar 2007

5. OTHER VITAL INFORMATION / MISCELLANEOUS INFORMATION

5.1 Status of Enabling Works:

Mobilization of Piling Contractor	-	26 th August 2006
Site Office completion and Inauguration	-	31 st August 2006
Charging of Electrical Panels – Construction Power	-	31 st August 2006
Mobilization of Civil Contractor	-	15 th December 2006



DRAWING / DOCUMENT SUBMISSION SCHEDULE

Customer: DCW Limited.

Project: 2 x 25 MW COGENERATION POWER PLANT

Sr. No.	DRAWING / DOCUMENT TITLE	DWG / DOC No.	REVNo.	CATEGORY APP / INFO	ACTUAL DATE OF SUBMISSION
I	MECHANICAL				
A	Reports & Schedules				
1	Design basis report - Mechanical	PP 034 M B01 0	0	A	02-06-06
	Design basis report - Mechanical	PP 034 M B01 0	1	A	02-08-06
2	Piping Material Specification	PP 034 M P01 0	0	I	15-09-06
3	Plant Control Philosophy			I	
4	O&M Manuals			I	
5	HMBD (Part of DBR - Machanical)	PP 034 M 001	0	A	02-06-06
	HMBD (Part of DBR - Machanical)	PP 034 M 001	1	A	02-08-06
6	Proposed Steam Flow Diagram (Part of DBR - Machanical)	PP 034 M SK01 3	0	A	02-06-06
	Proposed Steam Flow Diagram (Part of DBR - Machanical)	PP 034 M SK01 3	1	A	02-08-06
7	Flow Diagram for Ash Handling System (Part of DBR - Machanical)	PP 034 M SK02 2	0	A	02-06-06
	Flow Diagram for Ash Handling System (Part of DBR - Machanical)	PP 034 M SK02 2	1	A	02-08-06
8	Flow Diagram for Fuel Handling Plant (Part of DBR - Machanical)	PP 034 M SK03 3	0	A	02-06-06
	Flow Diagram for Fuel Handling Plant (Part of DBR - Machanical)	PP 034 M SK03 3	1	A	02-08-06
	Flow Diagram for Fuel Handling Plant	PP 034 M SK03 3	1	A	13-10-06
9	Crane clearance diagram	PP 034 M T09 2	0	A	02-08-06
B	Drawings				
1	Plot Plan	PP 034 M 201 0	0	A	03-05-06
	Plot Plan	PP 034 M 201 1	1	A	26-05-06
	Plot Plan	PP 034 M 201 2	2	A	07-07-06
	Plot Plan	PP 034 M 201 3	3	A	01-08-06
	Plot Plan	Reply to comments	-	A	20-02-07
2	Equipment Layout of Power house, Ground floor (+/- 0.00)	PP 034 M 202 1	0	A	30-05-06
	Equipment Layout of Power house, Ground floor (+/- 0.00)	PP 034 M 202 1	1	A	07-07-06
	Equipment Layout of Power house, Ground floor (+/- 0.00)	Reply to comments	-	A	26-07-06
	Equipment Layout of Power house, Ground floor (+/- 0.00)	Reply to comments	-	A	24-08-06
	Equipment Layout of Power house, Ground floor (+/- 0.00)	PP 034 M 202 1	2	A	04-09-06
3	Equipment Layout of Power house, Mezz. Floor (+/- 4.00)	PP 034 M 203 1	0	A	30-05-06
	Equipment Layout of Power house, Mezz. Floor (+/- 4.00)	PP 034 M 203 1	1	A	07-07-06
	Equipment Layout of Power house, Mezz. Floor (+/- 4.00)	Reply to comments	-	A	26-07-06
	Equipment Layout of Power house, Mezz. Floor (+/- 4.00)	Reply to comments	-	A	24-08-06
4	Equipment Layout of Power house, Operating floor (+/- 8.50)	PP 034 M 204 1	0	A	30-05-06
	Equipment Layout of Power house, Operating floor (+/- 8.50)	PP 034 M 204 1	1	A	07-07-06
	Equipment Layout of Power house, Operating floor (+/- 8.50)	Reply to comments	-	A	26-07-06
	Equipment Layout of Power house, Operating floor (+/- 8.50)	Reply to comments	-	A	24-08-06
5	Equipment Layout of Power house, Deaerator floor (+/- 14.00/22.00)	PP 034 M 205 1	0	A	30-05-06
	Equipment Layout of Power house, Deaerator floor (+/- 14.00/22.00)	PP 034 M 205 1	1	A	07-07-06
	Equipment Layout of Power house, Deaerator floor (+/- 14.00/22.00)	Reply to comments	-	A	26-07-06
	Equipment Layout of Power house, Deaerator floor (+/- 14.00/22.00)	Reply to comments	-	A	24-08-06
6	General Cross section of power house	PP 034 M 206 2	0	A	30-05-06
	General Cross section of power house	PP 034 M 206 2	1	A	07-07-06
	General Cross section of power house	Reply to comments	-	A	26-07-06
	General Cross section of power house	Reply to comments	-	A	24-08-06
7	Plant Levels	PP 034 M 209 4	0	A	04-08-06
	Plant Levels	PP 034 M 209 4	1	A	14-09-06
8	P&ID for fire water system (2 sheets)	PP 034 M 118 2	0	A	15-09-06
	P&ID for fire water system (2 sheets)	PP 034 M 118 2	1	A	17-10-06
9	P&ID for Service and Potable Water Distribution System	PP 034 M 125 3	0	A	04-09-06
	P&ID for Service and Potable Water Distribution System	Reply to comments	0	A	26-09-06
	P&ID for Service and Potable Water Distribution System	PP 034 M 125 3	1	A	17-10-06
10	P&ID for deaerator feed pumps and dosing system (Vendor drawing)	D12-1FB-5635P	1	I	20-07-06
	P&ID for deaerator feed pumps and dosing system (Vendor drawing)	Reply to comments	-	I	14-09-06
	P&ID for deaerator feed pumps and dosing system (Vendor drawing)	Reply to comments	-	A	20-10-06
	P&ID for deaerator feed pumps and dosing system (Vendor drawing)	D12-1FB-5635P	2	A	26-10-06
11	General arrangement of bed ash silo			I	
12	General arrangement of fly ash silo			I	
13	Equipment Layout - air conditioner area			I	
14	Equipment Layout - ventilation system			I	
15	Vent. System Eqpt. Layout & ducting schematic - STG building Ground and Mezz floors.	PP 034 M 111 2	0	I	10-10-06

Annexure - I

Sr. No.	DRAWING / DOCUMENT TITLE	DWG / DOC No.	REVNo.	CATEGORY APP / INFO	ACTUAL DATE OF SUBMISSION
16	A/C & Vent system Eqpt Layout and Ducting schematic - STG building Operating floor.	PP 034 M 112 3	0	I	10-10-06
17	Layout for dust extraction system			I	
18	Layout for coal handling plant			I	
19	Plant Identification system	PP 034 M B02 0	0	I	01-08-06
C Equipment Layout					
1	Equipment Layout - TG building			A	
2	Equipment Layout - Water treatment area			A	
3	Equipment Layout - Coal handling system	PP 034 M 214 1	0	A	28-07-06
	Equipment Layout - Coal handling system	-	0	A	18-09-06
	Equipment Layout - Coal handling system	PP 034 M 214 1	1	A	13-10-06
4	Equipment Layout - Cooling Tower area (Layout ACW/MCW pump shed)	PP 034 M 216 2	0	A	26-09-06
	Equipment Layout - Cooling Tower area (Layout ACW/MCW pump shed)	Reply to comments	-	A	20-09-06
5	Equipment Layout - Compressor House	PP 034 M 208 2	0	A	18-08-06
	Equipment Layout - Compressor House	Reply to comments	-	A	01-09-06
6	Equipment Layout - Ash handling plant	PP 034 M 228 1	0	A	26-08-06
7	Equipment Layout - Fire fighting system			A	
8	GA of Boiler & auxiliaries (TBW drawing)	D11-OFB-2531P	0	A	13-06-06
9	Equipment Layout - Crusher & screen house			I	
10	Equipment Layout - LDO area			I	
D PFD & P&I Drawings					
1	Legend for P&I diagram	SD-08-021	0	A	20-07-06
	Legend details	PP 034 M 101 3	0	I	01-08-06
	Legend details	Reply to comments	-	I	24-08-06
2	P&ID for steam system for Unit-1	PP 034 M 103 1	0	A	01-08-06
	P&ID for steam system for Unit-1	Reply to comments	-	A	24-08-06
	P&ID for steam system for Unit-1	PP 034 M 103 1	1	A	10-10-06
	P&ID for steam system for Unit-1	Reply to comments	-	A	03-01-07
	P&ID for steam system for Unit-2	PP 034 M 104 1	0	A	01-08-06
	P&ID for steam system for Unit-2	Reply to comments	-	A	24-08-06
	P&ID for steam system for Unit-2	PP 034 M 104 1	1	A	10-10-06
	P&ID for steam system for Unit-2	Reply to comments	-	A	03-01-07
3	P&ID for steam system: STG BoP (2 sheets)	PP 034 M 102 1	0	A	01-08-06
	P&ID for steam system: STG BoP (2 sheets)	Reply to comments	-	A	24-08-06
	P&ID for steam system: STG BoP (2 sheets)	PP 034 M 102 1	1	A	10-10-06
	P&ID for steam system: STG BoP (2 sheets)	Reply to comments	-	A	03-01-07
	P&ID for steam system: STG BoP (2 sheets)	Reply to comments	-	A	27-01-07
4	P&ID for condensate system Unit-1	PP 034 M 107 1	0	A	01-08-06
	P&ID for condensate system Unit-1	Reply to comments	-	A	24-08-06
	P&ID for condensate system Unit-1	PP 034 M 107 1	1	A	10-10-06
	P&ID for condensate system Unit-1	Reply to comments	-	A	03-01-07
	P&ID for condensate system Unit-2	PP 034 M 108 1	0	A	01-08-06
	P&ID for condensate system Unit-2	Reply to comments	-	A	24-08-06
	P&ID for condensate system Unit-2	PP 034 M 108 1	1	A	10-10-06
	P&ID for condensate system Unit-2	Reply to comments	-	A	03-01-07
5	P&ID for regenerative feed heating system Unit-1	PP 034 M 105 1	0	A	01-08-06
	P&ID for regenerative feed heating system Unit-1	Reply to comments	-	A	24-08-06
	P&ID for regenerative feed heating system Unit-1	PP 034 M 105 1	1	A	10-10-06
	P&ID for regenerative feed heating system Unit-1	Reply to comments	-	A	03-01-07
	P&ID for regenerative feed heating system Unit-1	Reply to comments	-	A	05-02-07
	P&ID for regenerative feed heating system Unit-1	PP 034 M 106 1	0	A	01-08-06
	P&ID for regenerative feed heating system Unit-1	Reply to comments	-	A	24-08-06
	P&ID for regenerative feed heating system Unit-1	PP 034 M 106 1	1	A	10-10-06
	P&ID for regenerative feed heating system Unit-1	Reply to comments	-	A	03-01-07
	P&ID for regenerative feed heating system Unit-1	Reply to comments	-	A	27-01-07
6	P&ID for Cooling Water System	PP 034 M 113 1	0	A	04-09-06
	P&ID for Cooling Water System	Reply to comments	0	A	26-09-06
	P&ID for Cooling Water System	PP 034 M 113 1	1	A	17-10-06
7	P&ID for Cooling Water Distribution System (2 sheets)	PP 034 M 114 1	0	A	04-09-06
	P&ID for Cooling Water Distribution System (2 sheets)	Reply to comments	0	A	26-09-06
	P&ID for Cooling Water Distribution System (2 sheets)	PP 034 M 114 1	1	A	17-10-06
9	P&ID for Clarified water system	PP 034 M 115 2	0	A	04-09-06
	P&ID for Clarified water system	Reply to comments	0	A	26-09-06
	P&ID for Clarified water system	PP 034 M 115 2	1	A	17-10-06
10	P&ID for DM water & Process condensate system	PP 034 M 116 1	0	A	04-09-06
	P&ID for DM water & Process condensate system	Reply to comments	0	A	26-09-06
	P&ID for DM water & Process condensate system	PP 034 M 116 1	1	A	17-10-06
11	P&ID for Plant Effluent System	PP 034 M 121 2	0	A	04-09-06
	P&ID for Plant Effluent System	Reply to comments	0	A	26-09-06
	P&ID for Plant Effluent System	PP 034 M 121 2	1	A	17-10-06
12	P&ID for Plant Air System	PP 034 M 110 1	0	A	04-09-06

Annexure - I

Sr. No.	DRAWING / DOCUMENT TITLE	DWG / DOC No.	REVNo.	CATEGORY APP / INFO	ACTUAL DATE OF SUBMISSION
	P&ID for Plant Air System	Reply to comments	0	A	26-09-06
	P&ID for Plant Air System	PP 034 M 110 1	1	A	17-10-06
13	P&ID for Steam & feed water system (TBW drg.)	D12-1FB-5633P	0	A	06-07-06
	P&ID for Steam & feed water system (TBW drg.)	Reply to comments	-	A	14-09-06
	P&ID for Steam & feed water system (TBW drg.)	Reply to comments	-	A	20-10-06
	P&ID for Steam & feed water system (TBW drg.)	D12-1FB-5633P	2	A	26-10-06
14	P&ID for feed water system (TBW drg.) To be deleted Refer 5633P			A	
15	P&ID for fuel feeding & ash discharge system (TBW drg.)	D12-1FB-5636P	0	A	06-07-06
	P&ID for fuel feeding & ash discharge system (TBW drg.)	Reply to comments	-	A	14-09-06
	P&ID for fuel feeding & ash discharge system (TBW drg.)	Reply to comments	-	A	20-10-06
	P&ID for fuel feeding & ash discharge system (TBW drg.)	D12-1FB-5636P	2	A	26-10-06
16	P&ID for air & flue gas system of boiler (TBW drg.)	D12-1FB-5634P	0	A	06-07-06
	P&ID for air & flue gas system of boiler (TBW drg.)	Reply to comments	-	A	14-09-06
	P&ID for air & flue gas system of boiler (TBW drg.)	Reply to comments	-	A	20-10-06
	P&ID for air & flue gas system of boiler (TBW drg.)	D12-1FB-5634P	2	A	26-10-06
17	P&ID for start-up fuel firing system (TBW drg.)	D12-2FB-3172P	0	A	20-07-06
	P&ID for start-up fuel firing system (TBW drg.)	Reply to comments	-	A	14-09-06
	P&ID for start-up fuel firing system (TBW drg.)	D12-2FB-3172P	1	A	10-10-06
18	P&ID for Fuel Oil System	PP 034 M 120 3	0	A	04-09-06
	P&ID for Fuel Oil System	Reply to comments	0	A	26-09-06
	P&ID for Fuel Oil System	PP 034 M 120 3	1	A	17-10-06
19	Water Balance Diagram	PP 034 M 002 3	0	A	02-06-06
	Water Balance Diagram	PP 034 M 002 3	1	A	02-08-06
	Water Balance Diagram	PP 034 M 002 3	2	A	27-12-06
	Water Balance Diagram (Rated Flow of Pumps)	Reply to comments	-	A	15-01-07
	Water Balance Diagram	Reply to comments	-	A	05-02-07
20	Flow diagram for coal handling system			A	
21	P&ID for DM & RO plant (Vendor drawing)	7757W0B001	0	I	20-10-06
22	P&ID for Pre-Treatment Plant (Vendor Drawing)	7757W0B001	0	I	20-10-06
23	Flow diagram for bed ash & fly ash handling system	PP 034 M SK02 2	1	I	02-08-06
24	Flow diagram for ventilation system	PP 034 M 111 2	0	I	10-10-06
25	Flow diagram for air-conditioning system	PP 034 M 112 3	0	I	10-10-06
	Write up on Ventilation System		0	I	06-11-06
26	Write up on Ventilation System	Reply to comments	-	I	14-11-06
E Technical Specifications					
1	Technical specification for Cooling Towers	PP 034 M T06 0	0	A	30-06-06
	Technical specification for Cooling Towers	Reply to comments	0	A	17-08-06
2	Technical specification for Crushers & Screens	PP 034 M T05 0	0	A	26-05-06
	Technical specification of Screen for Coal	PP 034 M T21 0	1	A	13-10-06
	Technical specification of Screen for Coal	Reply to comments	-	A	26-10-06
3	Technical specification for Coal Handling system - BoP	PP 034 M T04 0	0	A	29-07-06
	Technical specification for Coal Handling system - BoP	Reply to comments	-	A	24-08-06
4	Technical specification for Ash Handling plant	PP 034 M T11 0	0	A	26-08-06
	Technical specification for Ash Handling plant	Reply to comments	-	A	14-09-06
	Technical specification for Ash Handling plant	Reply to comments	-	A	15-09-06
5	Technical specification for Water Treatment plant	PP 034 M T07 0	0	A	12-09-06
	Technical specification for Water Treatment plant	Reply to comments	-	A	14-10-06
	Technical specification for Water Treatment plant	Reply to comments	-	A	26-10-06
	Technical specification for Water Treatment plant	Reply to comments	-	A	28-11-06
II ELECTRICALS					
A REPORT					
1	DESIGN BASIS REPORT Electrical	PP 034 E B01 0	0	A	30-05-06
	DESIGN BASIS REPORT Electrical	PP 034 E B01 0	1	A	04-08-06
B SINGLE LINE DIAGRAM					
1	KEY SINGLE LINE DIAGRAM	PP 034 E 101 1	0	A	30-05-06
	KEY SINGLE LINE DIAGRAM	PP 034 E 101 1	1	A	-
	KEY SINGLE LINE DIAGRAM	PP 034 E 101 1	2	A	26-12-06
2	SINGLE LINE DIAGRAM FOR 415 V PCC	PP 034 E 104 1	0	A	29-12-07
	SINGLE LINE DIAGRAM FOR 415 V PCC-2	PP 034 E 105 1	0	A	03-01-07
3	TYPICAL SINGLE LINE DIAGRAM FOR MCC	PP 034 E 106 1	0	A	03-Jan
4	SINGLE LINE DIAGRAM FOR 11KV SYSTEM	PP 034 E 102 1	0	A	13-07-06
	SINGLE LINE DIAGRAM FOR 11KV SYSTEM	PP 034 E 102 1	2	A	-
	SINGLE LINE DIAGRAM FOR 11KV SYSTEM	PP 034 E 102 1	0	A	23-12-06
5	GENERATOR SLD (GENERATOR VENDOR DRAWING)	TEDCW0101204	0	A	22-07-06
	GENERATOR SLD (GENERATOR VENDOR DRAWING)	Reply to comments	0	A	26-09-06
6	FEEDER LIST FOR COOLING WATER MCC	PP 034 E 111 4	0	I	03-01-07
7	FEEDER LIST FOR BOILER MCC	PP 034 E 107 4	0	I	03-01-07
8	FEEDER LIST STG MCC	PP 034 E 108 4	0	I	03-01-07
9	FEEDER LIST FOR BOP MCC	PP 034 E 111 4	0	I	03-01-07

Annexure - I


Sr. No.	DRAWING / DOCUMENT TITLE	DWG / DOC No.	REVNo.	CATEGORY APP / INFO	ACTUAL DATE OF SUBMISSION
10	FEEDER LIST FOR WATER MCC	PP 034 E 112 4	0		03-01-07
11	FEEDER LIST FOR FIRE WATER MCC	PP 034 E 115 4	0		03-01-07
12	FEEDER LIST FOR A.C. & VENT MCC	PP 034 E 111 4	0		03-01-07
13	FEEDER LIST FOR CHP MCC	PP 034 E 113 4	0		03-01-07
14	FEEDER LIST FOR AHP MCC	PP 034 E 114 4	0		03-01-07
15	FEEDER LIST FOR ACDB	PP 034 E 116 4	0		03-01-07
16	FEEDER LIST FOR MLDB	PP 034 E 117 4	0		03-01-07
17	FEEDER LIST FOR ELDB	PP 034 E 118 4	0		03-01-07
18	SINGLE LINE DIAGRAM FOR BATTERY CHARGER	PP 034 E 120 4	0		03-01-07
19	FEEDER LIST FOR 110V DCDB	PP 034 E 121 4	0		03-01-07
20	SINGLE LINE DIAGRAM FOR 110V UPS SYSTEM	PP 034 E 122 4	0		03-01-07
21	FEEDER LIST FOR 110V AC UPS DB	PP 034 E 123 4	0		03-01-07
22	TYPICAL SLD FOR LIGHTING PANEL (INDOOR+OUTDOOR)				
23	TYPICAL SLD FOR LIGHTING PANEL (STREET LIGHTING)				
C EQUIPMENT LAYOUTS					
1	Electrical Equipment Layout - Switchgear Room	PP 034 E 201 1	0	A	23-12-06
2	Electrical Equipment Layout - Transformer Yard				
3	Electrical Equipment Layout - LT Bus Duct Layout				
4	Electrical Equipment Layout - ESP MCC & Control Room				
5	Electrical Equipment Layout - WTP MCC room & control room				
6	General Arrangement Drawing - AVR Panel	3AYN1262XX-CAA	0		14-09-06
7	Electrical Equipment Layout - CHP MCC room & control room				
D CABLE TRAY LAYOUTS					
1	Overall Cable routing Layout			A	
2	Cable tray Layout - Power House Bldg - EL + 0.0M				
3	Cable tray Layout - Power House Bldg - Cable Spreader Room				
4	Cable tray Layout - Power House Bldg - EL + 4.0M				
5	Cable & Earthing Layout - Deaerator Area				
6	Cable Layout - Boiler Area - Ground Floor				
7	Cable Layout - Boiler Platforms				
8	Cable tray Layout - Compressor & ESP Control room				
9	Cable & Earthing Layout - CHP MCC ROOM				
10	Cable & Earthing Layout - Coal Handling System				
11	Cable tray Layout & Grounding Layout CT area				
12	Cable & Earthing Layout - -Transformer Yard				
13	Cable tray Layout - Raw Water Pump House, Fire Water Pump House.				
14	Cable tray Layout - For DM Water Area				
15	Cable & Earthing Layout - Ash Silo Area				
E Earthing & Lightning Protection Layouts					
1	Main Earthing Grid Layout Below Ground			A	
2	Lightning Protection & Aviation Warning Lighting Boiler Stack			A	
3	Earthing Layout - Power House Ground Floor				
4	Earthing Layout - Power House Mezzanine Floor				
5	Earthing Layout - Power House Operating Floor				
6	Earthing Layout - Power House Deaerator Floor				
7	Earthing Layout - Boiler & ESP Area Ground Floor				
8	Earthing Layout - ESP MCC & Control Room				
9	Earthing Layout - Coal Handling Area				
10	Earthing & Lightning protection Layout - CT area				
11	Earthing Layout - DM plant area				
12	Earthing Layout - Raw Water Pump House, Fire Water Pump House				
13	Lightning Protection Layout - Power Plant Area - Plan				
14	Lightning Protection Layout - Power Plant Area - Section				
F Illumination Layout					
1	Illumination Layout -Outdoor Area			A	
2	Illumination Layout - outside STG building			A	
3	Illumination Layout - Cable Spreader room				
4	Illumination Layout - Switchgear room				
5	Illumination Layout - TG Hall EL (+) 0.0 M Floor				
6	Illumination Layout - TG Hall EL (+) 4.0 M Floor				
7	Illumination Layout - TG Hall EL (+) 8.5 M Floor				
8	Illumination Layout - Deaerator Floor				
9	Illumination Layout - Boiler Area Ground Floor				
10	Illumination Layout - Boiler Platforms				
11	Illumination Layout - Bunker Area				
12	Illumination Layout - ESP Area				
13	Illumination Layout - ESP MCC & Control Room				
14	Illumination Layout - Ash Silo Area				
15	Illumination Layout - CT area				

Annexure - I

Sr. No.	DRAWING / DOCUMENT TITLE	DWG / DOC No.	REVNo.	CATEGORY APP / INFO	ACTUAL DATE OF SUBMISSION
16	Illumination Layout - DM plant area				
17	Illumination Layout - Raw Water Pump House, Fire Water Pump House.				
18	Illumination Layout - Crusher House				
19	Illumination Layout - Coal handling area				
G Control Schematics					
1	Control Schematics for 415V MCC (10 Sheets)	PP 034 E 601 3	0	A	03-01-07
H NOTES & LEGENDS (ELECTRICAL)					
1	Standard Installation drawings Power				
2	DG Noise data Certificate (DG Vendor)				
3	Standard Installation drawings Lighting				
4	Standard Installation drawings Earthing & Lightning Protection				
I LISTS & SCHEDULES					
1	RELAY SETTING CHART & CO-ORDINATION CURVES			A	
2	ELECTRICAL EQUIPMENT LIST				
3	LIST OF MOTORS				
4	CABLE & INTER CONNECTION SCHEDULE FOR 11 KV SYSTEM				
5	CABLE & INTER CONNECTION SCHEDULE FOR 415 V PCC				
6	CABLE & INTER CONNECTION SCHEDULE FOR 415 V MCC				
7	CABLE & INTER CONNECTION SCHEDULE FOR DCDB, ACDB & MISCELLANEOUS CABLES				
8	CABLE & INTER CONNECTION SCHEDULE FOR CONTROL PANEL				
9	DRAWING/DOCUMENT LIST				
J TECHNICAL SPECIFICATION					
1	HT SWITCHGEAR	PP 034 M T02 0	0	A	13-07-06
2	415 V PCC			A	
3	MCC & DB			A	
4	AUXILIARY TRANSFORMER	PP 034 E T04 0	0		20-07-06
5	BATTERY	PP 034 E T05 0	0		
6	BATTERY CHARGER	PP 034 E T06 0	0		
7	UNINTERRUPTED POWER SUPPLY SYSTEM	PP 034 E T07 0	0		
8	H.V. POWER CABLES	PP 034 E T08 0	0		
9	L.V. POWER & CONTROL CABLES	PP 034 E T09 0	0		
10	L.T. BUSDUCT	PP 034 E T10 0	0		
11	H.T. MOTORS	PP 034 E T11 0	0		
12	L.T. MOTORS	PP 034 E T12 0	0		
13	CABLE TRAYS	PP 034 E T13 0	0		
14	LIGHTING FIXTURES & ACCESSORIES				
15	ELECTRICAL ERECTION SPECIFICATION				
16	LCS				
K CALCULATION					
1	CABLE SELECTION CHART			A	
2	AUX. TRANSFORMER SIZING (LOAD ANALYSIS)	PP 034 E W05 4	0	A	10-07-06
3	EARTHING CALCULATIONS			A	
4	LT DG SIZING CALCULATIONS			A	
5	LIGHTING CALCULATIONS				
6	BATTERY SIZING	PP 034 E W06 4	0		09-10-06
	LOAD LIST		0		14-11-06
7	UPS SIZING				
III CONTROL & INSTRUMENTATION					
1	Design Basis Report - Instrumentation	PP 034 I B01 0	0	A	30-05-06
2	Technical specifications for DCS			A	
3	Drive Control Philosophy	PP 034 I 001 04	0	A	-
	Drive Control Philosophy	PP 034 I 001 04	0	A	-
4	DCS configuration & system architecture drawing			A	
5	Control room layout			A	
6	DCS FAT Procedure			A	
1	Master Instrument Index				
2	Instrument cables and tech specifications				
3	PA system Tech specification				
4	Fire alarm system specification				
5	Telephone system specification (EPAPX)				
6	Communication Layout (PA system)				
7	Fire alarm system Layout				
8	DCS I/O List				
9	DCS loop Logic drawing				
10	DCS vendor Documents as approved by M/s Thermax Limited				

Annexure - I

Sr. No.	DRAWING / DOCUMENT TITLE	DWG / DOC No.	REVNo.	CATEGORY APP / INFO	ACTUAL DATE OF SUBMISSION
IV	CIVIL				
1	Design Basis Report - Civil	PP 034 C B01	0	A	02-06-06
	Design Basis Report - Civil	PP 034 C B01	1	A	26-07-06
2	Report on design of turbo-generator foundation	PP 034 C B03	0	A	07-12-06
3	Report on design of RCC chimney foundation	PP 034 C B02	0	A	20-10-06
	Report on design of RCC chimney foundation	PP 034 C B02	1	A	30-11-06
4	Architectre drawing for STG building			A	
5	Architectre drawing for administrative building			A	
6	Design Analysis of crusher house			A	
7	Architectural drawing for Security Room & time Office			A	
7	Architectural drawing for ESP Control Room			I	
8	Architectural drawing for Electrical Room for CHP			I	
9	Architectural drawing for Raw Water Pump House			I	
10	Architectural drawing for Workshop			I	
11	Architectural drawing for Compressor House			I	
12	STG Bldg - RCC details of footings			I	
13	STG Bldg - Plinth beam Layout and details			I	
14	STG Bldg - RCC Columns schedule			I	
15	STG Bldg - Control room details of false floor			I	
16	STG Bldg - Control room details of false ceiling			I	
17	STG Bldg - Details of glazed partitions			I	
18	Architectural drawings - Water treatment area			I	
19	Crusher house - Plans, elevations, sections and details			I	
20	Layout of roads and drains			I	
21	GA and conc forming details of Chimney	PP 034 C 241 1	0	I	20-10-06
	GA and conc forming details of Chimney	PP 034 C 241 1	1	A	30-11-06
22	Boiler platform: Foundation Layout and details.			I	
23	STG Bldg - Pile & Pile cap details			I	
24	Boiler - Pile & Pile cap details			I	
25	Chimney - Pile & Pile cap details	PP 034 C 242 2	0	I	20-10-06
	Chimney - Pile & Pile cap details	PP 034 C 242 2	1	A	30-11-06
26	Crusher House - Pile & Pile cap details			I	
26	Screen House - Pile & Pile cap details			I	
27	Geotechnical Investigation Final Report	-	0	I	29-07-06
1	Contract Co-ordination Procedure	PM CCP 034	0	A	03-05-06
	Contract Co-ordination Procedure	PM CCP 034	1	A	06-06-06
	Contract Co-ordination Procedure	PM CCP 034	2	A	30-06-06
2	Vendor List	-	1	A	06-06-06
	Vendor List	-	2	A	10-07-06
3	Kick Off Meeting Minutes	-	0	A	30-06-06

			
DRAWINGS / DOCUMENTS RELEASED			
Customer: DCW LIMITED			
Project: 2 X 25 MW Cogeneration Power Plant			
SR NO	TITLE OF DRAWING / DOCUMENT	DATE OF RELEASE	REMARKS
A	<u>SPECIFICATIONS RELEASED FOR PROCUREMENT</u>		
1	2 x 125 TPH AFBC Boiler		
2	STG & Auxiliaries	02-Jun-06	
3	ESP	28-May-06	
4	Cooling Tower	30-Jun-06	
5	Screen & Crushers for CHP	26-May-06	
6	HT Switchgear	17-Jul-06	
7	Auxiliary Transformer	21-Jul-06	
8	EOT Crane	28-Jul-06	
9	Water Treatment System	28-Jul-06	
10	Fuel Handling System	28-Jul-06	
11	Horizontal Centrifugal Pumps	04-Aug-06	
12	IBR Valves	01-Sep-06	
13	Ash Handling System	25-Aug-06	
14	Fire Protection System	09-Sep-06	
15	AC System	31-Aug-06	
16	LDO Pumps	01-Sep-06	
17	Compressor	23-Sep-06	
18	Air Receiver	15-Sep-06	
19	Air Drier	01-Sep-06	
20	NIBR Valves	04-Oct-06	
21	Butterfly Valves & Water Type NRVs	04-Oct-06	
22	Flipflow Screen	12-Oct-06	
23	LT Motors	16-Oct-06	
24	HT Motors	16-Oct-06	
25	HT Cables	11-Oct-06	
26	Misc. Pumps	17-Oct-06	
27	L T Switchgear	03-Jan-07	
28	L T Motors (Compressor)	08-Jan-07	
29	L T Power & Control cables	11-Jan-07	
30	L T Bus Duct	13-Jan-07	
31	ACVFD Panel	13-Jan-07	
32	NIBR Pipes & Fittings	13-Jan-07	
33	Cable Tray	13-Jan-07	
34	Control Valve	02-Feb-07	
35	Pneumatic On-Off valve	13-Mar-07	
B	<u>DRAWINGS / DOCUMENTS RELEASED FOR CONSTRUCTION</u>		
1	Geotechnical Investigation, Topographical Report	26-May-06	
2	GA for Clarified Water Storage Tank	31-Jul-06	
3	Civil Works - Tender Documents	10-Aug-06	
4	Pile Detail	18-Aug-06	
5	Initial Load List	18-Aug-06	
6	Boiler Foundation - Pile Layout	23-Aug-06	
7	ESP - Pile Layout	01-Sep-06	
8	STG Building - Pile Layout	06-Sep-06	
9	Plant Levels	13-Sep-06	
10	GA - Instrument Air (Two Sheets)	14-Sep-06	
11	DMN FOR DRG. NO.PP034C2011 (R2)	14-Nov-06	
12	RCC DETAILS OF BASIN & SUMP RAFT LEVEL	17-Nov-06	
13	RCC DETAIL OF MONORAIL SUPPORT LEVEL	17-Nov-06	
14	RCC DETAILS OF BASIN & SUMP RAFT LEVELS WALL & COLUMN	17-Nov-06	
15	RCC DETAILS OF WATER DISTRIBUTION LEVEL BEAM WALL	17-Nov-06	
16	RCC DETAIL OF DECK SLAB LVL	17-Nov-06	
17	RCC DETAILS OF STAIRCASE & SUPPORTING BEAMS	17-Nov-06	
18	GENERAL CIVIL ARRGT. OF CT BASIN RAFT & BASIN CURB LEVEL	17-Nov-06	
19	GENERAL CIVIL ARRGT. OF CT TOWER FILL PACK & WATER DISTRIBUTION LEVEL	17-Nov-06	

ANNEXURE - II

SR NO	TITLE OF DRAWING / DOCUMENT	DATE OF RELEASE	REMARKS
20	GENERAL CIVIL ARRGT. OF CT TOWER DECK SLAB AND MONORAIL LVL.	17-Nov-06	
21	GENERAL CIVIL ARRGT. OF CT TOWER SUPER STRUCTURE	17-Nov-06	
22	RCC DETAILS & LAYOUT OF BASIN CURB & SUMP TOP LVL	17-Nov-06	
23	2x125 TPH AFBC BOILER BOILER SUPPORTING STRUCTURE PILE CAP LAYOUT	22-Nov-06	
24	JB & TERMINATION SCHEDULE OF BOILER	27-Nov-06	
25	HOOK UP DIAGRAM OF BOILER	27-Nov-06	
26	HOOK UP BOM OF BOILER	27-Nov-06	
27	JB & TERMINATION SCHEDULE OF WATER TREATMENT PLANT	27-Nov-06	
28	SM BOX SCHEDULE AND TERMINATION OF WATER TREATMENT PLANT	27-Nov-06	
29	BRANCH CABLE SCHEDULE- WATER TREATMENT PLANT	27-Nov-06	
30	INSTRUMENT LIST AND DATA SHEET – WATER TREATMENT PLANT	27-Nov-06	
31	CABLE SCHEDULE:	27-Nov-06	
	a) BOILER MCC TO DCS – BOILER1	27-Nov-06	
	b) BOP MCC TO DCS	27-Nov-06	
	c) STG MCC TO DCS FOR STG1	27-Nov-06	
	d) WTP MCC TO DCS	27-Nov-06	
	e) BOILER 1 JB TO DCS	27-Nov-06	
32	DCS PANEL AND CONSOLE BASE FRAME DETAILS	27-Nov-06	
33	FIRE ALARM SYSTEM – LAYOUT OF ALL AREA	27-Nov-06	
34	STG BUILDING – PIPE LAYOUT	27-Nov-06	
35	STG BUILDING PILE CAP LAYOUT	27-Nov-06	
36	STG BUILDING – PILE CAP DETAILS FOOTING – F1 DETAILS	27-Nov-06	
37	STG BUILDING : PILE CAP DETAILS	27-Nov-06	
38	STG BUILDING : PILE CAP DETAILS	27-Nov-06	
39	DMN FOR DRG.NO.PP034C2021 (sh. 2 to 4 of 4) r0	27-Nov-06	
40	DMN FOR DRG.NO.PP034C2011 R2	28-Nov-06	
41	WORKSHOP AND STORE ROOM- FOUNDATION LAYOUT AND DETAILS	01-Dec-06	
42	CLARIFIED WATER STORAGE TANK - LAYOUT AND DETAILS	01-Dec-06	
43	CLARIFIED WATER STORAGE TANK - LAYOUT AND DETAILS	01-Dec-06	
44	WORKSHOP AND STORE ROOM- FOUNDATION LAYOUT AND DETAILS	01-Dec-06	
45	BOILER SUPPORTING STRUCTURE- PILE LAYOUT	05-Dec-06	
46	BOILER SUPPORTING STRUCTURE- PILE CAP LAYOUT	05-Dec-06	
47	STG BUILDING- PILE LAYOUT	06-Dec-06	
48	STG BUILDING- PILE CAP LAYOUT	06-Dec-06	
49	LAYOUT OF ROADS AND DRAINS	06-Dec-06	
50	CHIMNEY 93 M HIGH PILING LAYOUT & DETAILS	14-Dec-06	
51	STG BLDG BOILER FEED PUMP FOUNDATION PILE LAYOUT & DETAILS	19-Dec-06	
52	STG FOUNDATION PILE LAYOUT	19-Dec-06	
53	LAYOUT OF ACW/MCW PUMP SHED	21-Dec-06	
54	SURVEY DRAWING FOR NEW PIPE RACK/CABLE RACK	21-Dec-06	
55	ASH SILO: PILE LAYOUT	26-Dec-06	
56	OPEN COAL YARD - DETAILS OF EARTH WORK	03-Jan-07	
57	LAYOUT OF ROADS AND DRAINS	03-Jan-07	
58	OPEN COAL STOCK PILE- DETAILS OF PROTECTION WALL	04-Jan-07	
59	WTP SHED,PUMP HOUSE, MCC ROOM & LAB - LAYOUT & DETAILS OF FOOTINGS AND COLUMNS	05-Jan-07	
60	PLOT PLAN	10-Jan-07	
61	STG BUILDING- PLINTH BEAM LAYOUT	16-Jan-07	
62	STG BUILDING- PLINTH BEAM DETAILS	16-Jan-07	
63	BOILER SUPPORTING STRUCTURE - SLAB & BEAM LAYOUT AT EL (+)2.800	19-Jan-07	
64	BOILER SUPPORTING STRUCTURE - INSERT PLATE LAYOUT & DETAILS FOR FLOOR AT EL (+)2.800	19-Jan-07	
65	BOILER SUPPORTING STRUCTURE - BEAM DETAILS FOR FLOOR AT EL (+) 2.800	19-Jan-07	
66	BOILER SUPPORTING STRUCTURE - BEAM DETAILS FOR FLOOR AT EL (+) 2.800	19-Jan-07	
67	BOILER SUPPORTING STRUCTURE - BEAM DETAILS FOR FLOOR AT EL (+) 2.800	19-Jan-07	
68	BOILER SUPPORTING STRUCTURE - PILE LAYOUT	22-Jan-07	

ANNEXURE - II

SR NO	TITLE OF DRAWING / DOCUMENT	DATE OF RELEASE	REMARKS
69	BOILER SUPPORTING STRUCTURE - PILE CAP LAYOUT	22-Jan-07	
70	ESP- PILE FOUNDATION LAYOUT & DETAILS	02-Feb-07	
71	BOILER SUPPORTING STRUCTURE- INSERT PLATE LAYOUT AND DETAILS	05-Feb-07	
72	GENERAL NOTES FOR CONCRETE WORKS	08-Feb-07	
73	RCC WORKS- STANDARD DETAILS	08-Feb-07	
74	STG BUILDING - LAYOUT & RCC DETAILS OF FLOOR AT EL (+)3.960	09-Feb-07	
75	STG BUILDING - LAYOUT & RCC DETAILS OF FLOOR AT EL (+)3.960	10-Feb-07	
76	STG BUILDING - RCC DETAILS OF BEAMS FOR FLOOR AT EL (+)3.960	11-Feb-07	
77	STG BUILDING - RCC DETAILS OF BEAMS FOR FLOOR AT EL (+)3.960	12-Feb-07	
78	STG BUILDING - RCC DETAILS OF BEAMS FOR FLOOR AT EL (+)3.960	13-Feb-07	
79	BOILER SUPPORTING STRUCTURE- BEAM DETAILS FOR FLOOR AT EL (+)2.800	13-Feb-07	
80	CHIMNEY 93 M HEIGH- PILECAP LAYOUT AND DETAILS	15-Feb-07	
81	CLARIFIED WATER TANK - LAYOUT & RCC DETAILS	24-Feb-07	
82	STG BUILDING - PILE CAP DETAILS	26-Feb-07	
83	ESP- PILE CAP LAYOUT & DETAIL	27-Feb-07	
84	FUEL HANDLING AREA- CONVEYORS- FOUNDATION DETAILS	27-Feb-07	
85	BOILER SUPPORTING STRUCTURE - SLAB & BEAM LAYOUT AT EL(+)6.60	01-Mar-07	
86	BOILER SUPPORTING STRUCTURE - FLOOR AT EL(+)6.60 - BEAM DETAILS	01-Mar-07	
87	BOILER SUPPORTING STRUCTURE - FLOOR AT EL(+)6.60 - BEAM DETAILS	01-Mar-07	
88	BOILER SUPPORTING STRUCTURE - FLOOR AT EL(+)6.60 - BEAM DETAILS	01-Mar-07	
89	BOILER SUPPORTING STRUCTURE - FLOOR AT EL(+)6.60 - BEAM DETAILS	01-Mar-07	
90	NEUTRALISATION PIT - LAYOUT & DETAILS	02-Mar-07	
91	PIPE & CABLE RACK - (COGEN 70 E TO SWGR # 4) - STRUCTURAL STEEL DETAILS	06-Mar-07	
92	DM WATER TANK/PROCESS CONDENSATE TANK - RCC DETAILS OF FOUNDATION	07-Mar-07	
93	STG FOUNDATION - CONCRETE OUTLINE DETAILS	07-Mar-07	
94	STG FOUNDATION - CONCRETE OUTLINE DETAILS	07-Mar-07	
95	BOILER SUPPORTING STRUCTURE - FLOOR AT EL (+)6.60 -INSERT PLATE LAYOUT & DETAILS	07-Mar-07	
96	GENERAL ARRANGEMENT OF 93 M HIGH CHIMNEY	07-Mar-07	
97	2 X 125 TPH AFBC BOILER - FD , PA & ID FAN FOUNDATION - PILE LAYOUT	13-Mar-07	
98	CRUSHER HOUSE - PILE LAYOUT	14-Mar-07	
99	WTP SHED, PUMP HOUSE, MCC ROOM & LAB	20-Mar-07	
100	WTP - LAYOUT OF EQUIPMENT FOUNDATION AND DETAILS	22-Mar-07	
101	STG BUILDING - NORTHSIDE STAIRCASE DETAILS	23-Mar-07	
102	PIPE AND CABLE RACK -(COGEN 70 E TO SWGR #4) - FOUNDATION LAYOUT	23-Mar-07	
103	PIPE AND CABLE RACK -(COGEN 70 E TO SWGR #4) - FOUNDATION DETAILS	23-Mar-07	
104	PIPE AND CABLE RACK -(COGEN 70 E TO SWGR #4) - STRUCTURAL STEEL DETAILS	23-Mar-07	
105	STG BUILDING - BOILER FEED PUMP - PILE CAP LAYOUT & DETAILS	24-Mar-07	

ANNEXURE - III



PROCUREMENT STATUS

Customer: DCW LIMITED

Project : 2 X 25 MW COGEN POWER GENERATION PLAN1


S.No	DESCRIPTION	EFFECTIVE DATE	VENDOR NAME	DATE OF DELIVERY AT SITE	REMARKS
1.00	STG & Auxiliaries				
	Unit - 1	2-May-06	TD Power Systems Pvt. Ltd	Sep-07	
	Unit - 2			Nov-07	
2.00	BOILER - AFBC				
	Unit - 1	29-Apr-06	Thermax B&H	Jun-07	
	Unit - 2			Jul-07	
3.00	ESP				
	Unit - 1	31-May-06	Thermax Enviro Division	Mar-07	
	Unit - 2			Apr-07	
4.00	COMPRESSED AIR SYSTEM				
	AIR COMPRESSORS	11-Dec-06	Kirloskar Pnuematic Co. Ltd.	Mar-07	
	MOTORS	15-Feb-07	Siemens Ltd	Apr-07	
	AIR DRYER	9-Dec-06	Trident Pnuematics Pvt. Ltd.	Mar-07	
	AIR RECEIVER	12-Dec-06	Indus Metal Works	Mar-07	
5.00	WATER TREATMENT PLANT	13-Sep-06	Thermax WWS	Mar-07	
6.00	COOLING TOWER				
	Supply	22-Jul-06	Hammon Thermopack Engineers Pvt. Ltd	Mar-07	
7.00	PUMPS				
	MAIN COOLING WATER PUMPS	20-Oct-06	Kirloskar Brothers Limited	Apr-07	
	AUX. COOLING WATER PUMPS	20-Oct-06	Kirloskar Brothers Limited	Apr-07	
	FIRE WATER PUMPS	18-Oct-06	Kirloskar Brothers Limited	Mar-07	
	MISCELLANEOUS PUMPS	18-Oct-06	Kirloskar Brothers Limited	Mar-07	
	LDO Pumps	16-Nov-06	Del PD pumps	Jan-07	
8.00	AIR CONDITIONING SYSTEM	8-Nov-06	SK Systems	Mar-07 Apr-07	

ANNEXURE - III

S.No	DESCRIPTION	EFFECTIVE DATE	VENDOR NAME	DATE OF DELIVERY AT SITE	REMARKS
9.00	VENTILATION SYSTEM	31-Oct-06	SK Systems	Mar-07 Apr-07	
10.00	EOT CRANE	23-Aug-06	Unicon Technologies International Pvt. Ltd	Mar-07	
11.00	FIRE FIGHTING SYSTEM				
	FIRE FIGHTING PUMPS				
	FIRE EXTINGUISHERS (PORTABLE)				
12.00	FIRE DETECTION SYSTEM				
13.00	FUEL HANDLING SYSTEM				
	Crushers for CHP	18-Jul-06	Sayaji Iron & Engineering Company Limited	Feb-07	
	Flip Flow Screens	9-Nov-06	Techpro	Mar-07	
	Fuel Handling System	27-Sep-06	Solcon Engineers Pvt. Ltd	Apr-07	
14.00	ASH HANDLING PLANT (FLY ASH & BED ASH)	11-Oct-06	Macauwber Beekay Pvt. Limited	Apr-07	
15.00	ELECTRICAL				
	HT SWITCHGEAR	4-Oct-06	ABB Limited	Mar-07	
	HT TRANSFORMERS	12-Sep-06	Areva T&D India Limited	Mar-07	
	LT SWITCH GEAR				
	LT BUS DUCT	20-Feb-07	Elecmech Switchgears & Instrumentation	Apr-07	
	HT CABLES	14-Nov-06	Poycab Wires Pvt. Ltd	Mar-07	
	LT CABLES	19-Feb-07	Poycab Wires Pvt. Ltd	Apr-07	
	BATTERY	2-Feb-07	Exide Industries Ltd	May-07	
	BATTERY CHARGER	24-Jan-07	Chhabi Electricals Pvt Ltd	Mar-07	
	LOCAL CONTROL STATIONS (LCS)				
	LIGHTING FIXTURES & ACCESSORIES				
	D G Set				
	UPS	23-Feb-07	Hi-Rel Electronics Pvt Ltd	Apr-07	
	HT MOTORS	15-Nov-06	BHEL	Jul-07	
	LT MOTORS	17-Nov-06	Siemens	Apr-07	
	CABLE TRAY	14-Feb-07	Shruti Industries	Mar-07	
16.00	INSTRUMENTATION				
	DCS	14-Mar-07	Honeywell Automation	Jul-07	
	PRDS	21-Mar-07	Chemtrols Engg Limited	Jul-07	
	CONTROL & SIGNAL CABLES	19-Feb-07	Poycab Wires Pvt. Ltd	Apr-07	
	CONTROL VALVES	21-Mar-07	KSB Pumps Limited	Jul-07	
	Instrumentation Cables	23-Feb-07	Thermo Cables Pvt. Limited	Apr-07	
	BOP Instruments				

ANNEXURE - III

S.No	DESCRIPTION	EFFECTIVE DATE	VENDOR NAME	DATE OF DELIVERY AT SITE	REMARKS
17.00	PIPING				
	IBR PIPES	20-Dec-06	Minami Machi Sangya Kaisha Ltd.	Jun-07	
	NON IBR PIPES	24-Mar-07	Intertech Fittings	May-07	
	IBR FITTINGS	02-Jan-07	Dee Development	Mar-07	
	NON IBR FITTINGS	5-Mar-07	Indus Tubes Limited	Apr-07	
	IBR VALVES	02-Nov-06 20-Nov-06	KSB	May-07 Jun-07	
	NON IBR VALVES - Butterfly, NRVs	27-Nov-06	Intervalve (I) Ltd	Mar-07	
	NON IBR VALVES -Gate, Globe, Check, Ball	20-Nov-06	BDK Engineering Industries Ltd	Mar-07	
	IBR Flanges	19-Dec-06	Mahesh Industries	Mar-07	
	NIBR Flanges	17-Mar-07	Perls Metals	Apr-07	
	STEAM TRAPS				
	STRAINERS				
	GASKETS & HARDWARE				
	SAFETY VALVE	12-Feb-07	Tyco Sanmar Ltd	Apr-07	
	SPRING HANGERS				
	RUBBER BELLOWS				
	PAINTS				
	INSULATION				


 Plan of Engineering Activities for April 2007			
S.NO	TASK DESCRIPTION	EXPECTED FINISH DATE	REMARKS / COMMENTS
1. RELEASE OF SPECIFICATION			
1.1	Conical strainer specs	07-Feb-07	
1.2	Expansion bellow specs	07-Apr-07	
1.3	Steam Traps	15-Apr-07	
1.4	Lighting Fixtures	15-Apr-07	
1.5	PA & EPBX System	15-Apr-07	
2. ENGINEERING DRAWINGS / DOCUMENTS			
2.1 CIVIL ENGINEERING DRAWINGS/DOCS			
2.1.1	RCC drawing : STG pile cap & columns upto bottom of deck	20-Apr-07	
2.1.2	Dynamic Analysis of Crusher House	10-Apr-07	
2.1.3	RCC drawing : Chimney shell	15-Apr-07	
2.2 MECHANICAL ENGINEERING DRAWINGS/DOCS			
2.2.1	Final issue of IBR/NIBR BOQ	25-Apr-07	
2.2.2	Issue CCOE Drawings	12-Apr-07	
2.2.3	Issue CW / ACW piping Layout	05-Apr-07	
2.2.4	Issue Raw Water/Fire water Piping Layout	10-Apr-07	
2.3 ELECTRICAL ENGINEERING DRAWINGS/DOCS			
2.3.1	DG sizing calculation	20-Apr-07	
2.4 CONTROL & INSTRUMENTATION ENGINEERING DRAWINGS/DOCS			
2.4.1	Fire alarm system	15-Apr-07	


 Plan of Procurement Activities for April 2007			
S.NO	TASK DESCRIPTION	EXPECTED FINISH DATE	REMARKS/ COMMENTS
1. ORDERS TO BE FINALISED			
1.1	ACVFD	10-Apr-07	
1.2	Fire protection system	20-Apr-07	
1.3	PA & EPBAX	26-Apr-07	
1.4	Pneumatic ON/OFF valve	30-Apr-07	
2. MATERIAL TO BE DESPATCHED			
2.1	Boiler - Pressure parts		Dispatches will last till May'07
2.2	ESP - Componenets		Dispatches will last till April'07
2.3	WTP - Components		Dispatches will last till April'07
2.4	LT Motors		Dispatches will last till April'07
2.5	Ash handling equipments		Dispatches will last till May'07
2.6	FHS equipments		Dispatches will last till April'07




Plan of Construction Activities for April 2007

S.NO	TASK DESCRIPTION	EXPECTED FINISH DATE	REMARKS / COMMENTS
1. WORK IN PROGRESS / PLANNED TO COMPLETE			
1.1	STG Bldg - BC Bay 4.0m slab	15-Apr-07	
1.2	Boiler-I 2.8m slab	20-Apr-07	
1.3	ESP pile caps & pedestals	15-Apr-07	
1.4	WTP shed foundation	30-Apr-07	
2. WORK PLANNED TO START			
2.1	Ash silo piling		Expected to start by 1-Apr-07
2.2	Pipe rack foundations		Expected to start by 05-Apr-07

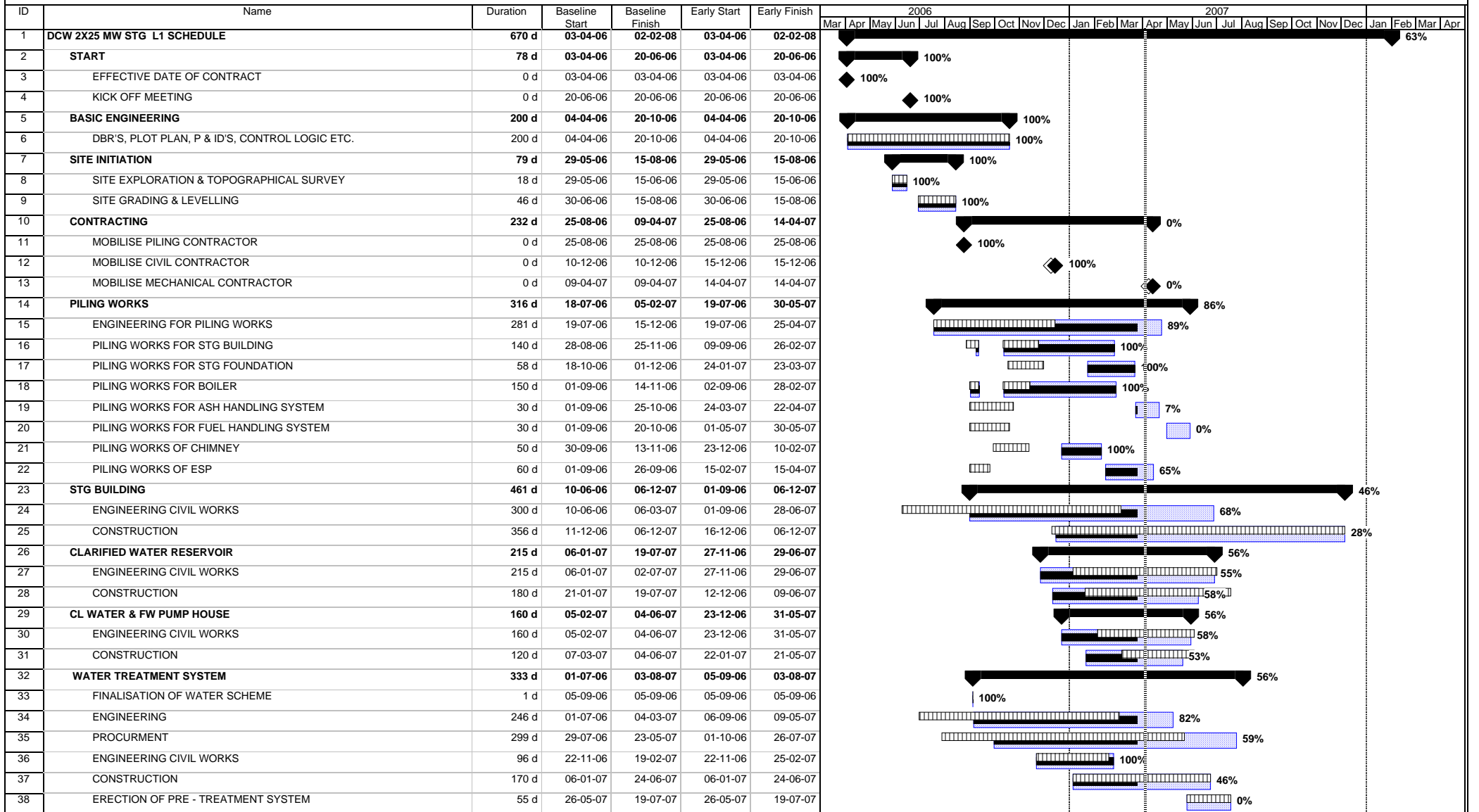
 Plan of Engineering Activities for May 2007			
S.NO	TASK DESCRIPTION	EXPECTED FINISH DATE	REMARKS / COMMENTS
1. RELEASE OF SPECIFICATION			
1.1	SWAS	10-May-07	
1.2	Misc. Instruments	15-May-07	
2. ENGINEERING DRAWINGS / DOCUMENTS			
2.1 CIVIL ENGINEERING DRAWINGS/DOCS			
2.1.1	STG building - RCC framework up to girger lvl	15-May-07	
2.1.2	Foundation drawing of Aux. transformer	05-May-07	
2.1.3	STG deck - RCC drawing	15-May-07	
2.1.4	Ash Silo - Foundation and Columns drawing	15-May-07	
2.2 MECHANICAL ENGINEERING DRAWINGS/DOCS			
2.2.1	STG Building - Piping Layout	05-May-07	
2.2.2	IBR - Isometric drawing	20-May-07	
2.3 ELECTRICAL ENGINEERING DRAWINGS/DOCS			
2.3.1	Earthing Claculations	15-May-07	
2.4 CONTROL & INSTRUMENTATION ENGINEERING DRAWINGS/DOCS			
2.4.1	Sox ann NOx analyser	15-Mar-07	

 Plan of Procurement Activities for May 2007			
S.NO	TASK DESCRIPTION	EXPECTED FINISH DATE	REMARKS / COMMENTS
1. ORDERS TO BE FINALISED			
1.1	Fire alarm system	20-May-07	
2. MATERIAL TO BE DISPATCHED			
2.1	FHS equipments		Dispatches will last till May'07
2.2	EOT Crane	05-May-07	
2.3	AHS equipments		Dispatches will last till May'07

 Plan of Construction Activities for May 2007			
S.NO	TASK DESCRIPTION	EXPECTED FINISH DATE	REMARKS / COMMENTS
1. WORK PLANNED TO START			
1.1	Cooling Tower - Partition and Baffle wall		Expected to start by 15-May-07
1.2	Ash Silo pile caps & pedestals		Expected to start by 15-May-07
1.3	STG Building BC Bay Slab		Expected to start by 20-May-07
2. WORK PLANNED TO COMPLETE			
2.1	Piling of Ash Silo area	05-May-07	
2.2	Piling of ESP-2	15-May-07	
2.3	Boiler-1 Slab at (+)6.5m level	02-May-07	

PROJECT PROGRESS REPORT

ANNEXURE VI

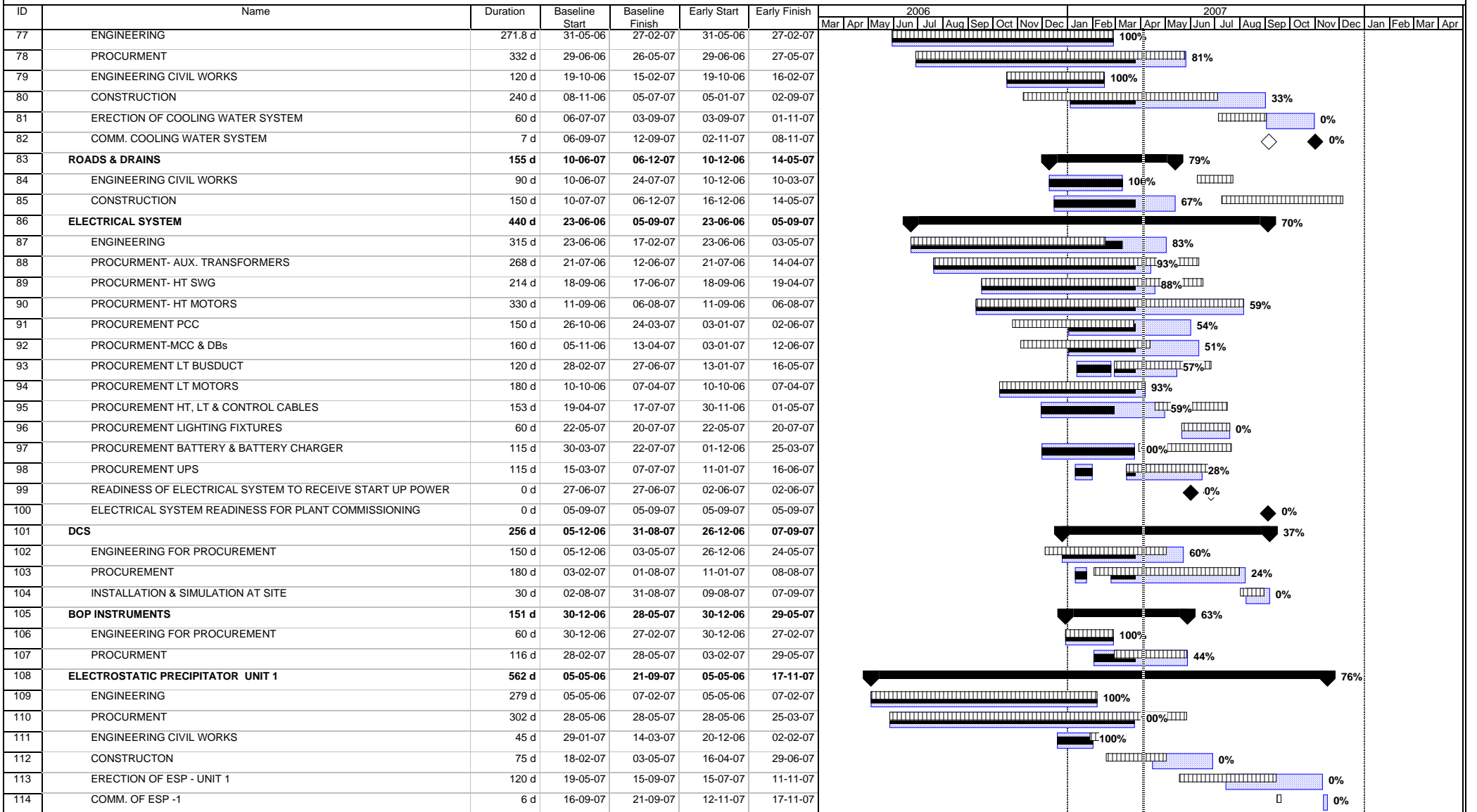


Project: DCW 2X25 MW STG







Task Revised Baseline Milestone
 Task Progress Baseline Milestone Summary

PROJECT PROGRESS REPORT

ANNEXURE VI



Project: DCW 2X25 MW STG

Task  Revised Baseline  Milestone 
 Task Progress  Baseline Milestone  Summary 

PROJECT PROGRESS REPORT

ANNEXURE VI

ID	Name	Duration	Baseline Start	Baseline Finish	Early Start	Early Finish	2006												2007											
							Mar	Apr	May	Jun	Jul	Aug	Sep	Oct	Nov	Dec	Jan	Feb	Mar	Apr	May	Jun	Jul	Aug	Sep	Oct	Nov	Dec	Jan	Feb
115	ELECTROSTATIC PRECIPITATOR UNIT 2	585 d	05-05-06	30-10-07	05-05-06	10-12-07																								
116	ENGINEERING	296 d	05-05-06	09-03-07	05-05-06	24-02-07																								
117	PROCUREMENT	342 d	28-05-06	27-06-07	28-05-06	04-05-07																								
118	ENGINEERING CIVIL WORKS	45 d	15-03-07	28-04-07	20-12-06	02-02-07																								
119	CONSTRUCTION	75 d	04-04-07	17-06-07	15-05-07	28-07-07																								
120	ERECTION OF ESP UNIT -2	120 d	28-06-07	25-10-07	08-08-07	05-12-07																								
121	COMM. OF ESP -2	5 d	26-10-07	30-10-07	06-12-07	10-12-07																								
122	BOILER UNIT 1	586 d	18-04-06	24-11-07	18-04-06	24-11-07																								
123	ENGINEERING	320 d	18-04-06	23-12-06	18-04-06	03-03-07																								
124	PROCUREMENT	369 d	08-05-06	12-05-07	08-05-06	11-05-07																								
125	ENGINEERING CIVIL WORKS	183 d	25-09-06	23-12-06	25-09-06	26-03-07																								
126	CONSTRUCTION	120 d	12-12-06	11-04-07	13-12-06	11-04-07																								
127	ERECTION OF BOILER UNIT -1	161 d	18-04-07	25-09-07	18-04-07	25-09-07																								
128	HYDROTEST BOILER -1	5 d	26-09-07	30-09-07	26-09-07	30-09-07																								
129	COMM. OF BOILER UNIT-1	16 d	04-11-07	19-11-07	04-11-07	19-11-07																								
130	STEAM BLOWING & NORMALISATION OF BOILER -1	5 d	19-11-07	24-11-07	20-11-07	24-11-07																								
131	BOILER UNIT 2	626 d	08-05-06	23-01-08	08-05-06	23-01-08																								
132	PROCUREMENT	430 d	08-05-06	11-07-07	08-05-06	11-07-07																								
133	CONSTRUCTION	115 d	10-02-07	10-06-07	05-01-07	09-06-07																								
134	ERECTION OF BOILER UNIT -2	161 d	17-06-07	24-11-07	17-06-07	24-11-07																								
135	HYDROTEST BOILER -2	5 d	25-11-07	29-11-07	25-11-07	29-11-07																								
136	COMM. OF BOILER UNIT -2	16 d	03-01-08	18-01-08	03-01-08	18-01-08																								
137	STEAM BLOWING & NORMALISATION OF BOILER -2	5 d	19-01-08	23-01-08	19-01-08	23-01-08																								
138	STG UNIT 1	573 d	09-05-06	02-12-07	09-05-06	02-12-07																								
139	ENGINEERING	330 d	09-05-06	03-04-07	09-05-06	03-04-07																								
140	PROCUREMENT	455 d	25-05-06	22-08-07	25-05-06	22-08-07																								
141	ENGINEERING CIVIL WORKS	125 d	17-12-06	20-04-07	17-12-06	20-04-07																								
142	CONSTRUCTION	133 d	24-04-07	03-09-07	24-04-07	03-09-07																								
143	ERECTION OF STG & AUX UNIT -1	49 d	27-09-07	14-11-07	27-09-07	14-11-07																								
144	PRE -COMMISSIONING OF STG -1	16 d	15-11-07	30-11-07	15-11-07	30-11-07																								
145	SYNCHRONISATION OF STG -1	2 d	01-12-07	02-12-07	01-12-07	02-12-07																								
146	STG UNIT 2	619 d	25-05-06	02-02-08	25-05-06	02-02-08																								
147	PROCUREMENT	509 d	25-05-06	15-10-07	25-05-06	15-10-07																								
148	CONSTRUCTION	125 d	23-06-07	25-10-07	23-06-07	25-10-07																								
149	ERECTION OF STG & AUX UNIT -2	48 d	17-11-07	03-01-08	17-11-07	03-01-08																								
150	PRE-COMMISSIONING OF STG -2	28 d	04-01-08	31-01-08	04-01-08	31-01-08																								
151	SYNCHRONISATION OF STG -2	2 d	01-02-08	02-02-08	01-02-08	02-02-08																								

Project: DCW 2X25 MW STG

Task



Revised Baseline



Milestone



Task Progress



Baseline Milestone



Summary

