

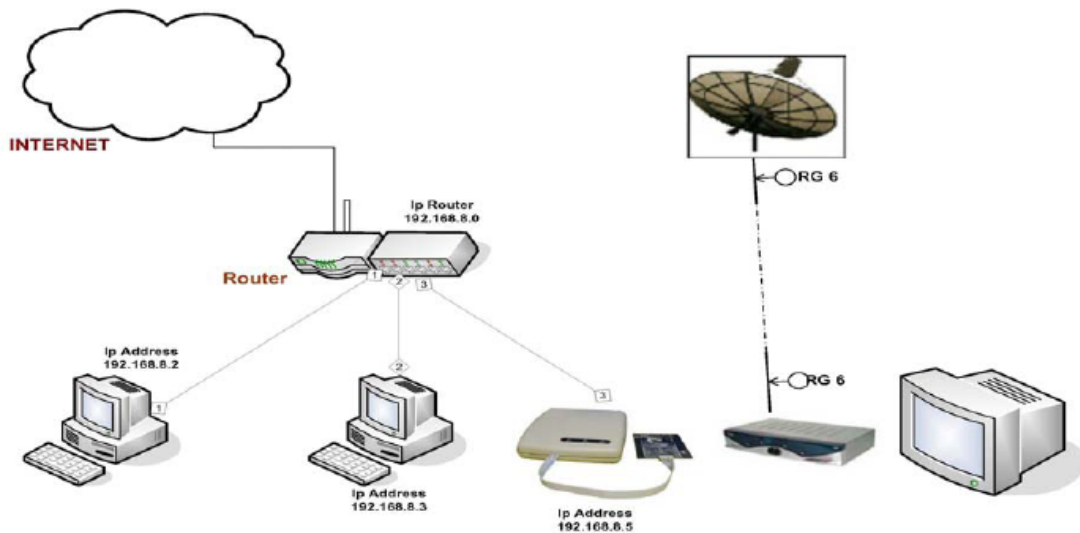
# GUIDE TO USING CV12

## 1. Introduction

CV12 is the equipment which connects to the internet for receiving data in order to watch the encrypted channels e.g. ASTRO (Seca 2), and MULTICHOICE , UBC (Irdeto 2), ST1, I-Skynet (Viaccess 2.X)

It is suitable for the receiver without network port and not able to connect to the internet. With the convenience of CV12, you do not need to buy a new receiver.

The installation process is simple and easy to follow as the step by step guide has been listed accordingly.



## 2. Equipment you need

To set up you need to have the Internet ADSL with Router in order to connect to CV12

Use either one of these setup:-

- 1) CV12 connect to gateway + modem combo
- 2) CV12 connect to switch connect to router
- 3) CV12 connect to router
- 4) CV12 connect to 3in1 or 4in1 combo

Note:

3in1 combo = modem,router,switch

4in1 combo = modem,router, switch,wifi

### 3. Finding the IP address

#### A) Using Dos

Click 'Start' button and then select 'Run'. In dos prompt,type cd\ and 'Enter'  
Type 'ipconfig/all' and 'Enter'

The following information can be viewed (picture):

IP Address ..... 10.0.0.8

Change the last digit "8" to different numbers if you have more than computers connected to router e.g. 10.0.0.25 or 10.0.0.50 to write in the Set\_Net window.

Default Gateway ..... 10.0.0.2

Fill in this number to the Gateway box in the Set\_net window without any changing.

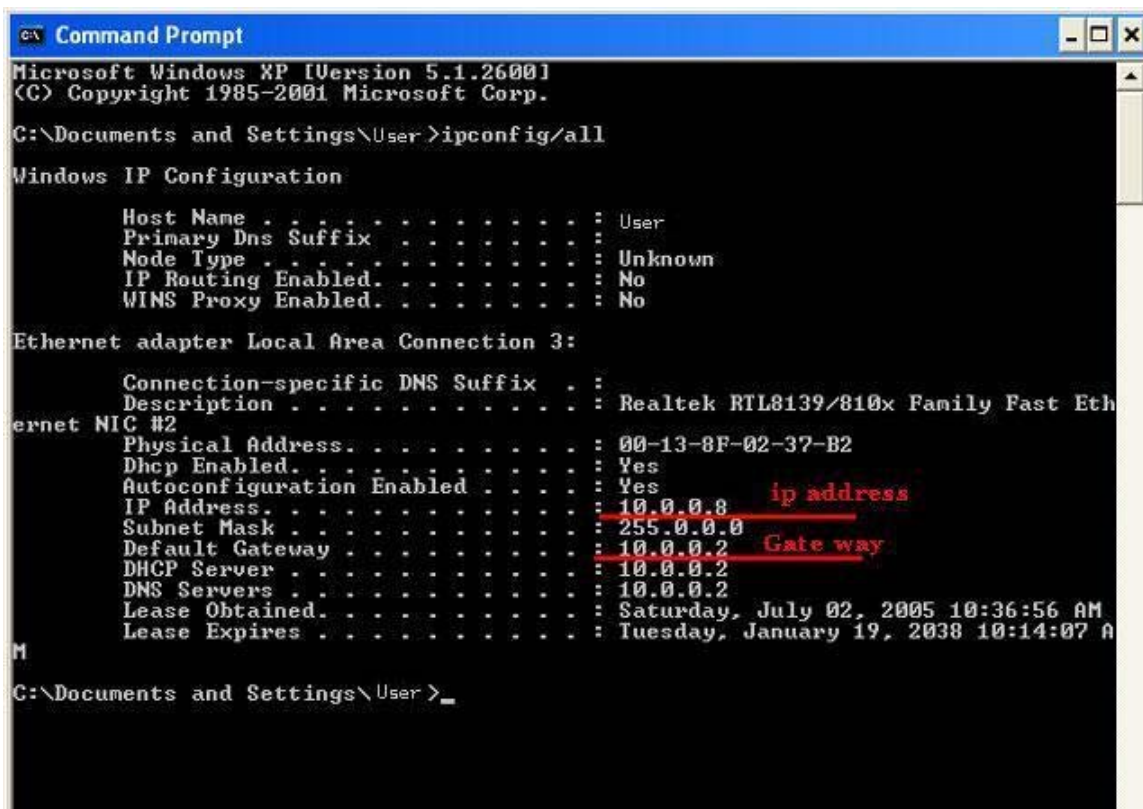
DNS Server..... 2XX.XXX.XXX

Fill in this number in the DNS Server box in Set\_net window

In the Box Number xxxxxxxxxxxxxxxx and Password xxxx **Do not change.**

Server .....

Fill in server IP e.g. www.xxx.com



```
Microsoft Windows XP [Version 5.1.2600]
(C) Copyright 1985-2001 Microsoft Corp.

C:\Documents and Settings\User>ipconfig/all

Windows IP Configuration

    Host Name . . . . . : User
    Primary Dns Suffix . . . . . :
    Node Type . . . . . : Unknown
    IP Routing Enabled. . . . . : No
    WINS Proxy Enabled. . . . . : No

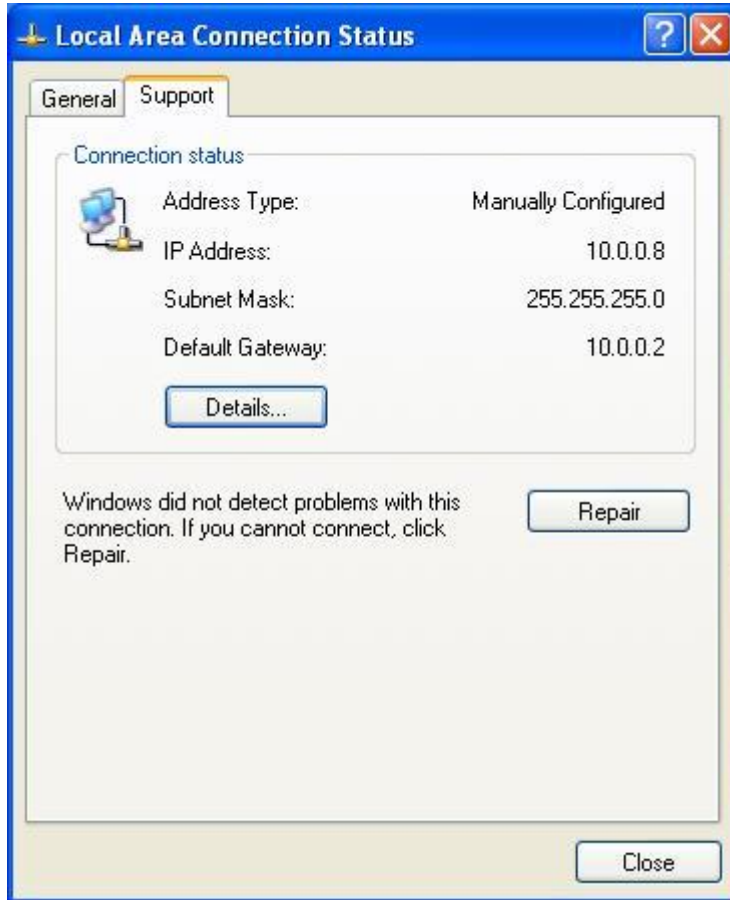
Ethernet adapter Local Area Connection 3:

    Connection-specific DNS Suffix . :
    Description . . . . . : Realtek RTL8139/810x Family Fast Eth
ernet NIC #2
    Physical Address. . . . . : 00-13-8F-02-37-B2
    Dhcp Enabled. . . . . : Yes
    Autoconfiguration Enabled . . . . . : Yes
    IP Address. . . . . : 10.0.0.8 ip address
    Subnet Mask . . . . . : 255.0.0.0
    Default Gateway . . . . . : 10.0.0.2 Gate way
    DHCP Server . . . . . : 10.0.0.2
    DNS Servers . . . . . : 10.0.0.2
    Lease Obtained. . . . . : Saturday, July 02, 2005 10:36:56 AM
    Lease Expires . . . . . : Tuesday, January 19, 2038 10:14:07 AM

C:\Documents and Settings\User>
```

## B) Using Windows

Click at the internet connection icon then there will be the window shown as in the picture. Then click Support tab, you will see the IP address

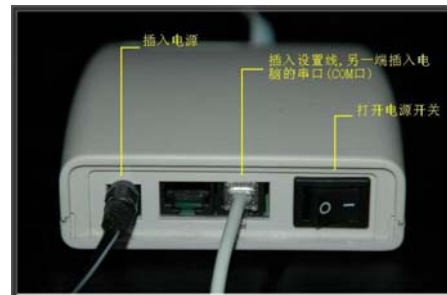


#### 4. How to write IP Address to CV12

1. Connect RS232 to COM 1 port first from your computer to CV12 before switch on your CV12 device.
2. Connect another side to the CV12.
3. Then power on CV12 and computer
4. Open Set\_Net program
5. Click at "Read" button
6. Change existing IP Address be 10.0.0.8
7. Set Gateway to 10.0.0.2
8. Do not change the Box Number and Password
9. Server box, fill in server IP address eg 202.xxx.x.x or name.xxx.com
10. Then click on "Write" button, and then click OK
11. After Read/Write to CV12 device, switch off the CV12
12. Unplug the COM port from your CV12



Connecting serial cable to computer



Plug RJ11 head to right side to program with Set\_Net.exe

Set\_net

ติดต่อ

COM1  COM2

READ

WRITE

IP

IP Address 10.0.0.8

Gateway 10.0.0.2

DNS Server 211.148.192.135

Box Number XXXXXXXXXXXXXXXXXXXX

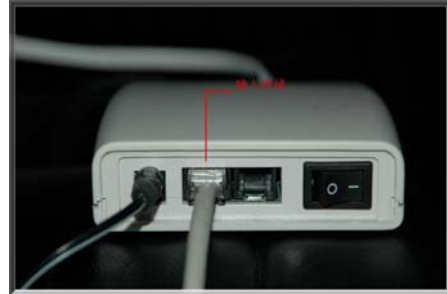
Password 1234

Server hx963.8800.org

CLOSE

### 5. Connecting CV12 and Router

1. Connect cable to Ethernet port of Switch / Router
2. And the other end of cable to CV12



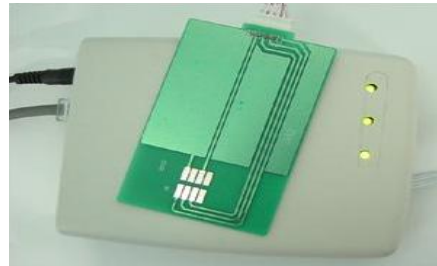
Plug RJ45 or Ethernet head to LEFT side and connect other end to Router

### Connecting to Receiver

1. Before you power on the receiver, slot in the CV12 chip cards into the smartcard / CAM slot. CV12 chip card contact facing upwards (depending on respective receiver)
2. Power on receiver and select the scrambled channel using your receiver remote control.
3. Power on the CV12 device. All the 3 Green lights LED (Power, Network, Login) should be on.
4. **Green** light LED (Login) should blink to **Red** light every 10 seconds when there is data exchange activity.
5. You can watch your channels on TV.



Connecting to receiver



LED lights up

### Important Note:

1. Do not switch on CV12 and then slot in the CV12 chip card to receiver.
2. Only switch on your CV12 device after slot in CV12 chip card into receiver.
3. Switch off your CV12 device before removing CV12 chip card from receiver.

**Receivers compatible with:**

CV12 Seca2 AstroTV - Original Nokia and Philips, XSat 410 / 430, eMetabox III, Topfield (w/Aston Cam) and other seca2 compatible receivers.

CV12 Irdeto2 Multichoice / UBC - XSat 410 and 430

**Channel information**Seca 2

91.5E- Measat 1 - KU-Band

ASTRO Full package channels include PPV 20, 21

<http://www.lyngsat.com/packages/astro.html>

Irdeto 2

78.5E Thaicom2/3 Ku-Band

UBC Full package (Platinum) channels

<http://www.lyngsat.com/packages/ubc.html>

68.5E Pas 10 Multichoice C-Band

Full package

**Specifications**

Interface RS232 serial interface

Power Supply NI nr.23 ~ 0258

Input:230V~50Hz,4.8VA

Output:10V ~250mA

Weight 160g

Weight 460g(Attachment)

Dimensions 125mm x 100mm x 30mm (L x W x H)

Dimensions 185mm x 153mm x 50mm (L x W x H)

**Package**

CV12 - 1 unit

Power adapter - 1 unit

RS232 cable - 1 unit

Manual

Note:

(Ethernet RJ45 cable is not included)

## **DNS information**

### Thailand

#### 1) **TOT**

Preferred DNS = 203.121.130.39

Alternate DNS = 203.121.130.40

1024/256 kbps

Preferred DNS = 203.150.218.161

Alternate DNS = 203.150.213.1

512/256 and 256/128 kbps

Preferred DNS = 203.155.33.2

Alternate DNS = 202.44.144.34

#### 2) **TRUE**

Preferred DNS = 203.144.255.71

Alternate DNS = 203.144.255.72

### Malaysia

#### **TM Net Streamyx**

Preferred DNS = 202.188.0.133

Alternate DNS = 202.188.1.5

### Indonesia

#### **PT Telkom.Net**

Preferred DNS = 202.134.0.155

Alternate DNS = 202.134.2.5

#### **Indo.net**

Preferred DNS = 202.159.32.2

Alternate DNS = 202.159.33.2

#### **CBN@Anywhere**

Preferred DNS = 202.158.3.7

Alternate DNS = 202.158.3.6

### Brunei

#### **BruNet e-Speed**

202.160.8.2

Preferred DNS = 202.160.9.9

Alternate DNS = 202.160.9.10