

TWO RENAISSANCE PIECES

BASS RECORDER

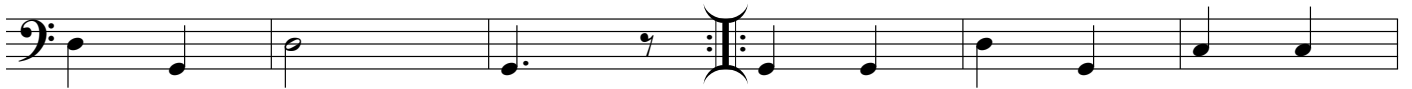
BRANSLE DE CHAMPAGNE

CLAUDE GERVAISE
(fl. 1540-1560)

1



17



25

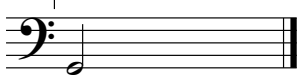


1.



2.

Fine



A PAVYON (PAVAN)

MASTER NEWMAN, 1550
arr. Arnold Dolmetsch

A



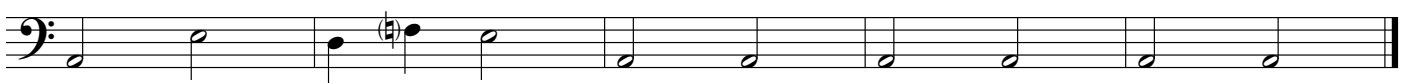
B



C



D



Fine