



Alpha Eta State DIGEST



The Delta Kappa Gamma Society International

VOLUME XLVII, NUMBER 2

SOUTH CAROLINA

JANUARY 2005

Alpha Eta State Convention

Immediate International Past President is Keynote Speaker

March 18 - 19, 2005
Embassy Suites Hotel
Columbia, South Carolina

March 18: Friday

5 --7 pm Registration (*Bring Silent Auction items to table*)

7 pm EXECUTIVE BOARD DINNER/MEETING

March 19: Saturday

8 am-1pm Registration

8 - 11:45 am Silent Auction

9 - 9:45 am Ceremony of Remembrance

9:45-10:15 am Break/check-out

10:15-11:45 am GENERAL SESSION

12 - 12:45 pm WORKSHOPS

- A. "Patience" - Leadership Dev.. Com.
- B. "The Five Sisters You Meet in Heaven" - Muriel O'Tuel
- C. "Current Educational Issues" - Debbie Elmore, SC School Boards Association

1- 3:30 pm BIRTHDAY LUNCHEON

Jean Gray was elected International President in August 2002. Just one year before her election, she was honored with the prestigious International Achievement Award.

A resident of Maryland, she was reared in Georgia. She received a B.S. degree in mathematics and physics from Howard University in Washington, D.C. A few years later, she earned a master's degree from Johns Hopkins University in Baltimore, Maryland.

Before retiring in 1989, she was a math educator for thirty-four years in Georgia and Maryland. She was nominated several times for Maryland Teacher of the Year and received the Governor's Citation for Excellence.

Initiated as a charter member of Omega chapter, she served in every office, chaired every committee, and edited the chapter newsletter for eight years. At the state and international levels, she held office, chaired committees, conducted workshops, and delivered keynote addresses.

Always fascinated with Parliamentary law, she became certified as a Professional Registered Parliamentarian in the National Association of Parliamentarians after retirement from education.

An outstanding citizen, she continues to serve in numerous civic organizations including volunteer service at the State Hospital, Hospice, Cancer Society. She is active in the Mt. Olive AME Church.

Although she stays busy with Society activities, she finds time to indulge her passion for working with wood.

"I do not have a shop, but I manage to do the woodwork around my home, finish furniture, and construct small cabinets, bookcases, stools, and tables," she said.

The mother of two sons, she still has no grandchildren, only "two grand-dogs." Her younger son was killed at the age of twenty-six. Her elder son performs as a tenor in musicals, drama, and concerts in New York City.

A firm believer in teamwork, this model of excellence believes that the success of the Society is dependent upon the growth and vitality of the chapters.

"Chapter members who work together, celebrate together, share each other's successes, concerns, aspirations, and dreams are almost certain to bond together as a productive chapter unit," she stated.



Jean Gray, 2002-2004 International President, will be guest speaker at state convention.

Registration forms on Pages 10 & 11
Clip these or make copies.

The Delta Kappa Gamma Society International promotes professional and personal growth of women educators and excellence in education.

THE DIGEST

Publication
of
ALPHA ETA STATE
of
THE DELTA KAPPA GAMMA
SOCIETY INTERNATIONAL

Published three times a year in
October, January, June

NEXT DEADLINE: APRIL 15

Janis K. Blocker, Editor
20238 Augusta Hwy
Round O, SC 29474
Ph & fax: 843.835.2173
dajaview@lowcountry.com

Send address changes to:
Delta Kappa Gamma Society Int.
P.O. Box 1589
Austin, TX 78767-1589
or
promen@deltakappagamma.org
or
1.888.762.4685
or
www.deltakappagamma.org


Alpha Eta State Headquarters
607 Maple Street
Columbia, SC 29205
803.256.3869
www.geocities.com/scaphaeta

CONGRATS!

Peggy Shealy of **Alpha Gamma** had a poem published in the Fall 2004 issue of *The Delta Kappa Gamma Bulletin*.

Jill Branyon of **Beta Eta** submitted the manuscript "Education for All: Gender equity in Kenya, East Africa," which has been selected for inclusion in the Winter 2005 issue.

KEY NOTES



from
NELL



President Nell Cannon

PROUD OF THE PAST . . . COMMITTED TO THE FUTURE

The Leadership Challenge Seminar is scheduled for February 4-5 at the Ramada Inn Plaza Hotel in Columbia. Dr. Jeni Souders and Cathy Whitlock will present the sessions focusing on developing and refining leadership skills. Francie Markham and her committee have worked to ensure that this is worthwhile and enjoyable experience for the participants.

Embassy Suites Hotel in Columbia will be the scene of the Alpha Eta State Convention on March 18-19. The theme of the convention is "Let Excellence Shine." Moments of Excellence will spotlight outstanding accomplishments of Alpha Eta State members and chapters. Jean Gray, immediate past international president, will give the keynote address at the General Session on Saturday morning. The Birthday Luncheon will provide the opportunity to remember our founders. Darla Moore will be recognized as an international honorary member and will give the keynote address at the Luncheon. The 2005-2007 officers will be installed. Workshops on Saturday morning are being planned by the Leadership Development Committee, the Professional Affairs Committee, and the Personal Growth and Services Committee. The Silent Auction Committee is preparing for the many baskets prepared by the chapters. Proceeds will go toward the expenses of the Leadership Challenge Seminar.

Another opportunity in 2005 is the Southeast Regional Conference. Mark July 20-23 on your calendar to go to Williamsburg for this meeting. Carolyn Pittman, Southeast Regional Director, is planning an outstanding program. You'll get more information about it in the spring issues of *The News* and *The Digest*.

Visiting chapters around the state is the best thing about being state president. Local chapters pay attention to the needs of members, benefit from the energy provided by them, and activate networks for women. Meeting times and places accommodate the busy lifestyles of members. Women educators juggle family and professional responsibilities while finding time to participate in chapter activities by presenting programs, serving as a chapter hostess, and organizing chapter projects. Chapters flourish by tapping into the energy of members. Sometimes chapters struggle—membership drops or leadership resigns. Chapters should contact the state president or any member of the state executive committee with questions and concerns.

The state organization wants to support all chapters. We will pay attention to a chapter's needs and help with your concerns. It is a pleasure to share with members and chapters our love for the Society.

Books for a Rare Library

By Catherine Spragins

Imagine this scene. You are the teacher for 40 third-grades currently meeting in a corner of a church sanctuary because the school lacks classrooms. The students are wearing their school uniforms, have smiles on their faces, and are eager to learn. No textbooks, no charts or maps or pictures on the walls. No Paper. No workbooks or handouts. The children recite in unison whatever the teacher instructs. She does have a chalkboard but no overhead projector or computer or VCR. Where are you? In a small, remote village in Donkorkrom, Ghana.

Alpha Psi took on the project of collecting library materials for Donkorkrom Presbyterian Primary School after Alpha Psi President Catherine Spragins visited the new school while on a medical mission trip in June 2003. The library, a "first" at the school, was a 12-foot-square room in a cinder-block building with concrete floor and walls, window and door openings, and a roof overhead. Not one book in sight! The chapter collected a variety of books, dictionaries, atlases, number and word flash-cards, puzzles, word cubes, pencils, jigsaw puzzles and games.

Catherine returned to Ghana in July 2004 for a two-week trip with a medical mission team to hand-deliver the 60 pounds of educational materials sent on a plane with her from Atlanta to Frankfurt to Accra, Ghana and then seven hours in a pickup truck over rough roads to the final destination.

A special presentation ceremony was held at the school to receive the library gifts. Photographs and a beautiful Letter of Appreciation were given to Catherine. These Ghanaian children now know that they have some caring "teacher sisters" in the U.S.A.



Children at the Presbyterian Primary School in Ghana look at the books provided by Alpha Psi.

SILENT AUCTION

Each chapter is asked to prepare a theme basket for the auction at the state convention. The baskets may be any size and as creative as desired.

1. Mark baskets with chapter name and theme title. Wrap in cellophane with an itemized list of contents
2. The Silent Auction Committee will receive the baskets at the registration table on Friday from 5 - 7 pm.
3. Bidding will be on Saturday from 8 - 11:45 am.
4. Each basket will be awarded to the highest bidder. Winners will be announced at the end of the luncheon. One person may win more than one basket.
5. Chapter presidents will receive a letter with additional information such as possible basket themes.
6. Proceeds from the auction will help defray expenses of the Leadership Challenge Seminar.

From your
executive secretary....
Linda Heckle

It is hard to believe that by the time you read this, we will be into the year 2005. I hope your holiday season was most joyous and happy, and may your New Year be filled with many blessings.

Members of Alpha Eta State will continue to be busy during 2005. The State Convention is March 18-19 at the Embassy Suites Hotel in Columbia. Both forms are in this issue for you to use to register to attend. At this convention we will elect and install new state officers for the 2005-2007 biennium. There is no better way to learn the work of Delta Kappa Gamma, meet the great members, and catch the enthusiasm to move forward in its work than to attend a state convention. With conventions meeting only once every two years, it is even more important to be in attendance.

If you or your chapter wishes to make nominations for state committees, your new state president will appreciate your input. You can contribute to the strength of our Society by membership on a state committee. You may contact me or use the same form used for nominating a state officer (found on the state website) and mail the information to me before the convention in March.

Williamsburg, Virginia, is the site of the Southeast Regional Conference in July 2005. It is not too early to begin making plans to attend. At this conference we can enjoy meeting members from other states, learn a little American history and Society information as well as have great fellowship together.

Continue to remember that the Headquarters in Columbia is available for your use. State committees have met this fall, and others will be meeting in January and February. If I can help you in any way, please contact me.

Have a good year!

linda@echeck.com 803.796.0892

A HALF CENTURY OF SERVICE

By *Joyce Christenbury*
Newsletter editor, Alpha Psi

Alpha Psi salutes **Julia Baskin Wood**, a leader of women in the Delta Kappa Gamma Society International for the past fifty years.

Julia Wood graduated from Winthrop College with a BS in Home Economics Education and from the University of Tennessee with a MS in Textiles and Clothing/Related Arts. She did advanced study in Interior Design at Peabody College, the University of North Carolina at Greensboro, East Tennessee State College and the Penland School of Crafts.

An outstanding educator with a genuine interest in the welfare of others, she dedicated her life to the profession of education, teaching in the public schools of South Carolina, Anderson Junior College and Limestone College. She also worked with the Cooperative Extension Service in Alabama and South Carolina.

Initiated into Mu chapter fifty years ago, she has since served the organization in a variety of capacities. She served as a chapter president for eight years in three different chapters: Mu, Lambda and Alpha Psi. She was also president of Alpha Eta State for three years.

Always a devoted society member, she has served on numerous chapter and state committees, held many different offices, and conducted workshops at state, regional, and international conferences and conventions. Her leadership skills, warm outgoing manner, and joyous sense of humor have earned the love and respect of all the Delta Kappa Gamma sisters with whom she has worked during the past fifty years. A highlight of the years in Delta Kappa Gamma came in 1987 when she received the prestigious Alpha Eta State Achievement Award.

This special lady has also been recognized for her tireless contributions to her profession and its related functions. In 1978 she received the Meritorious Service Award from Epsilon Sigma Phi. In 1980 she received the first Clemson University Cooperative Extension Service Superior Performance Award and the Epsilon Sigma Phi State Distinguished Service Award. She also received the Red Cross Community Service Award on three different occasions.

“The First Lady of Alpha Psi,” as she is affectionately known, celebrated her 90th birthday this past summer and remains an active member of the chapter. Members of Alpha Psi thank Julia for being the lovely lady she is, for helping to launch the chapter, and for giving of her time and talents to lead Alpha Eta State forward. She has been a dear friend and mentor to many for the past fifty years. She is wished many more years of health and happiness.



Julia Wood receives a certificate for 50 years of service from President Catherine Spragins.

A reminder from

MEMBERSHIP

Chapters are reminded that Form 6 needs to be complete when submitted. Important items are date of initiation and next of kin with a complete address.

KUDOS

Paula Wilson of Beta Beta received the Wil Lou Gray Outstanding Educator Award from the Columbia College Alumnae Association. A music educator for 29 years, she is an elementary music specialist in Richland School District Two in Columbia.

REMINDER:

The deadline for applying for a state scholarship is February 1, 2005. Contact Mary Redfearn, chairman, at mredfearn@shtc.net for information.

The members of the committee are Jenny Trombley, Theta; Amelia Stone, Beta Zeta; Lynn Covington, Alpha Beta; Cindy Duryear, Chi; and Jane Crawford, Rho.

NOMINATIONS FOR ALPHA ETA STATE OFFICERS 2003-2005



PRESIDENT
Eunice Rowell



**FIRST
VICE PRESIDENT**
Marvella Easterling



**SECOND
VICE PRESIDENT**
Sims Lynn



SECRETARY
Peggy Shealy

Eunice Rowell was initiated into **Alpha Iota** in 1981 and later transferred to **Alpha Omega**. In both chapters she has served as vice president and president.

At the state level, she currently serves as treasurer. A past chairman of the Finance Committee, she was a recipient of the Mary Eva Hite state scholarship.

At the international level, she served on the Scholarship Committee, World Fellowships Committee, and Finance Committee, serving as chairman of all three committees. She was a recipient of the Annie Webb Blanton international scholarship.

She has attended every regional conference and international convention since becoming a Delta Kappa Gamma member. In addition she has presented workshops at both levels.

A graduate of Lander University with majors in business and marketing education, has also earned a master's degree in Business administration and a doctorate in higher education.

After 35 years of teaching at the high school and college levels, she retired in 1996. A "Teacher of the Year" recipient for five times and the "Upstate Channel Four golden Apple Teacher" recipient, she also served two terms on the Greenwood County Board of Education. She is active in church and community work.

She and her husband Gary are parents of two daughters and grandparents of two grandsons.

Marvella Easterling, a member of **Alpha Beta** since 1981, has served as president for three terms. At the state level she has served as secretary and on four state committees. She attended the Leadership/Management Seminar in 1992 in Austin. She currently serves as District III Director.

With a bachelor's and master's from Ball State University, she earned an additional 30 hours credit at Winthrop.

Before moving to South Carolina, she taught for two years in Indiana. She teaches second grade at Bennettsville Primary School.

Her community activities include membership in the Marlboro Players. She also serves on the Marlboro Area Arts Council.

In Thomas Memorial Baptist Church, she is a Sunday School teacher and a deacon.

Sims Lynn was initiated into **Gamma** in 1986 and has missed only one chapter meeting since then. She has served as president for six separate terms, just completing her most recent biennium. At the state level she has served on the World Fellowship and Achievement Award committees, the executive board, and as District II Director.

She holds a bachelor's degree from Georgia State University, a master's degree from U.S.C., and a specialist degree from Winthrop. Certified in nine areas, she has taught, been a principal, and served as an evaluator. She served on countywide committees in the school districts of Chester and Sumter counties. She retired in 2001.

Her community service includes membership on the Mental Retardation Board at the county and state levels. She chaired the South Carolina chapter of the American Association on Mental Retardation. She has held every office in the Variety Study Club. She holds membership in the Chester County Livestock Association.

In the Associate Reformed Presbyterian Church, she has served regularly as president of the Women of the Church. She sings in the choir and teaches Sunday School.

She and Robert, her husband of 44 years, have two married children

Peggy Shealy became a member of Alpha Gamma in 1996. She has served the chapter as 2nd vice president, 1st vice president, and president. Currently, she is World Fellowship chairman.

She has taught 8th grade science at Northwood Middle School in Greenville County since 1994.

A native of Simpsonville and youngest of three children, she followed in her mother's footsteps by graduating from Winthrop and Furman.

A love for nature she inherited from her mother and love for the arts from her father.

She enjoys gardening, big-band music, and anything 1940-50's whether it is "vintage" or "retro." She owns two spoiled schnauzers!

NOMINATIONS FOR DISTRICT DIRECTORS

DISTRICT I

Martha Horton



Martha Horton, initiated into Eta in 1981, has served the chapter as second vice president, first vice president, and president.

At the state level, she is a member of the Finance Committee. She was a participant in the 2001 Leadership Challenge Seminar.

She holds a degree in psychology from Converse and a MA in Education. She taught first and second grades in Spartanburg District 6 before retiring.

She serves now as an adjunct professor at Converse, supervising student teachers.

DISTRICT IV

Linda Navorska



Linda Navorska has held various offices in Chi. A graduate of Ashland University, Ohio, with a B.S. in elementary education, she has earned two master's degrees from Cambridge College and U.S.C. She has taught elementary grades, music, and the gifted and talented. She has been assistant principal of Whale Branch Elementary in Beaufort County for four years.

She and husband Donald have a son in Daytona Beach and a daughter, who is a Florida State graduate with plans to enroll in law school.

DISTRICT II

Amelia Stone



Amelia Stone was initiated in Beta Zeta in 1997. She just completed a biennium as president of the chapter. At the state level, she serves on the Scholarship Committee and chairs the Silent Auction Committee.

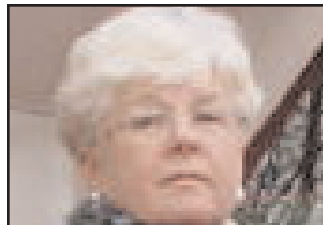
A graduate of Furman University, she retired five years ago after a career in elementary education.

She and husband John are active members of Camden First Baptist Church.

They have two married sons and five grandchildren.

DISTRICT V

Diane Taylor

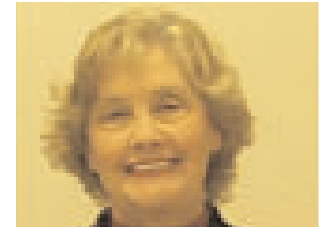


Diane Taylor, a past president of Rho for eight years, is currently president of Alpha Theta. She earned a bachelor's degree in mathematics and educational psychology from Trevecca Nazarene University and a master's degree from U.S.C.

A teacher for 30 years, she retired from Lexington High School. Since retirement, she has made mission trips to Dominica to teach pastors and Carib Indians. Currently, she teaches math to home-schooled children and in the Irmo adult education program.

DISTRICT III

Joyce Moore



Joyce Belk Moore, a past president of Psi Chapter and has served in several positions on the local level since her initiation in 1985. At the state, she is presently serving a second term on the Membership Committee.

Active in the SC Association of School Librarians, she is presently serving a two-year term as chairman of the Book Awards Committee. She also chaired the organizational committee for the newly formed Picture Book Award for South Carolina.

She has taught in the Florence schools for the past 32 years.

She is a past president and organizing member of Friends of the Lake City Library.

The mother of three and grandmother of six is also active in her church.

NOMINATIONS FOR NOMINATING COMMITTEE

Roberta Senn, District I, Beta Theta

Regina Spell, District II, Alpha

Ann Bragdon, District III, Psi

Cindy Duryea, District IV, Chi

Arlene O'Dell, District V, Epsilon

Ann Salters, Beta Eta

CHAPTER NEWS and TIDBITS

ETA

By Malinda Willard

The members of Eta in Spartanburg celebrated the 60th birthday of the chapter. The meeting was held at Central United Methodist Church, where the chapter was first organized in 1944 under the leadership of Dr. Mary Wilson Gee.

The theme for the evening was "Hats Off to Eta." Women wore hats in honor of the occasion and in keeping with the tradition of members dressing in hats and gloves for meetings. Other festivities included a banquet and musical entertainment from Jean Williams, a member of Eta, and Robert W. Mitchell, Jr., a member of Central Methodist.

The Research Committee presented a program entitled "Back to the Future," written by Sally Dover. The program traced the history of Eta in conjunction with concurrent events in world history.

The two oldest living members of the chapter were honored. Sibyl Bagwell was inducted in 1950, and Julia Swedenburg was inducted in 1954.

Two state representatives attended the birthday celebration State representatives. Nell Cannon, Alpha Eta State president, and Linda Heckle, executive secretary were guests at the birthday celebration.

A special feature was the presentation of old bulletins from the chapter archives to Headquarters. Linda Heckle accepted the presentation from Janet Agnew, past president of the chapter.

The celebration ended with the singing of "The Delta Kappa Gamma Song" and closing remarks from Myra Soderlund, current president of the chapter.



Ann Salter, a past state president; Sarah Spires; and Linda Heckle, state executive secretary, enjoy the party.

ALPHA PSI

By Joyce Christenbury

Members were busy last summer collecting educational materials including books, games, puzzles, flash cards, dictionaries and atlases for President Catherine Spragins to take to a school in Ghana (see article on page 3).

In July members enjoyed a fun summer gathering at the Keowee Sail Club in Seneca. Great food, wonderful desserts, plenty of warm sunshine, sparkling waters and majestic mountains fed the body and spirit. Members also shared stories of travels, family events, blueberry picking and landscaping.

At September's special regular meeting at Clemson Elementary School, Dr. Kenneth Weichel, principal, provided an update on the school and shared his philosophy on elementary education today.

Members Evelyn Rogers, Sybil Funchess, and Summers Perkins shared their experiences and memories as teachers in the Clemson area in years gone by.

Julia Baskin Wood, one of the founding members of Alpha Psi and president for two terms, was honored for her contributions to Delta Kappa Gamma for the past 50 years (see feature on page 4).

Julia's sister-in-law Ruby Baskin and her nephew David Baskin joined members in honoring Julia on this milestone.

The November meeting found members at the Hamilton Career Center in Seneca. Program director Gilbert Huggins and husband of member Pat Huggins told about the school's Robotics Program.

Mr. Huggins, his students, teachers, and area engineers have been creating winning robots for the past five years.

Four new educators have joined the chapter: Mary Barron, Gloria Bell, Nancy Linvill and Jane Greenwalt, who will be initiated at a Saturday brunch at Ethel Pettigrew's home in January.

Members contributed crayons, markers, glue sticks, sidewalk chalk, craft supplies and office supplies for the Clemson Child Development Center as the November chapter project.

In January, Evelyn Rogers will spearhead a Book Fair to raise money for the Headquarters Building.

ALPHA XI

By William Pamplin

Professional educators of the chapter held their second meeting at the B.J. Skelton Career Center.

President Linda Hawkins introduced Nell Cannon, state president of Alpha Eta State. She encouraged involvement at the state level. She emphasized the convention in March and the regional conference next summer at Williamsburg, Virginia.

Nell Hodge, first vice president in charge of programs, introduced Allen Coleman, executive director of the Pickens County Cultural Commission and the Museum of Art and History. Mr. Coleman gave an informative program about the history and growth of the county museum in Pickens with special emphasis on the growth currently in progress.

He presented drawings showing the 10,000 square-foot addition that is scheduled for completion in June of 2005. The addition will provide room for the numerous artifacts and works of art now in storage. It will also provide opportunities to view local and traveling exhibits.

Space will be available for art classes and an auditorium/community room for workshops and performances.

The goal of the museum is to be able to tell the stories of the past and offer opportunities for cultural growth to citizens and visitors of Pickens County.

A "Save the Stories" campaign has been initiated so that anyone wishing to help fund the interior of the new addition can do so by sending a check to Pickens county Museum of Art and History, 307 Johnson Street, Pickens 29671.

The Fiddler's Convention in November at Hagood Mill served as a fundraiser for the museum.

CHAPTER NEWS and TIDBITS

ALPHA SIGMA

By Mary V. Williams

The chapter mourns the loss of Wade Palmer, husband of Naomi Palmer. Wade was a friend and supporter of Alpha Sigma, Alpha Eta State, and Delta Kappa Gamma for many years.

The annual Christmas Auction was held December 6 with funds going into the Frances Muckenfuss Scholarship Fund. The members are in the process of writing their recollections of Frances Muckenfuss for a memorial ceremony in the spring.

The grant-in-aid recipient was sent off to Columbia College with many items from the "dorm shower" for her. Sally Taylor organized the shower.

A scrapbook committee has been formed to make creative memory pages of the pictures of activities of the chapter over the years. Ferrol Lovelady is the chapter photographer and the coordinator of the scrapbook project. Marcie Waters, and Rebecca Burns have lent their "scrapping" expertise.

MU

By Diane Smith

The chapter celebrated the 75th anniversary of Delta Kappa Gamma with a birthday cake and balloons. The chapter presented a book to the Cherokee County Library in honor of the anniversary.

The history of Mu Chapter was entertaining with members dressed in the fifties attire.



Members Mary Wright, Joyce Childers, and Betty Byars in their 50s attire.

PI

By Olivia Huggins

The chapter is strengthening membership through improved program presentations and greater involvement in society projects.

The November luncheon meeting included a silent auction with proceeds going to the Mannie Claire Hannah Grant-In-Aid fund. An inspiring program was presented by students of Marty Trifiletti, a Pi member and teacher at Waccamaw High School in Pawleys Island. Her students shared poetry from their weekly "Open Mike Fridays" (based on a young adult novel, *Bronx Masquerade*, by Walter Dean Myers).

Eight districts from across the state have been chosen to participate in the creation of English 1 curriculum. The special grant funding provides sets of core texts and a text set for each participating teacher. Marty attends a monthly workshop led by nationally recognized author, Janet Allen.

In an effort to spark awareness of international business, members voted to bring items for Valentine boxes for World Fellowship students at the January meeting. Additionally, fellowship is being strengthened through a phone tree, an improved website, and a more informative newsletter. The October newsletter included news of the birth of a daughter to Amy Haseldon and the service of Linda Davidson's son in Iraq with the Indiana National Guard.

The dictionaries have come in and will soon be delivered to the students. Our annual auction raised over \$600.00 in October to fund other projects such as our Grant-in Aid for an education student at Francis Marion University and Mini-grants for our members. At our December meeting, we will continue to bring items for the Parent Child Home Program. Supporting our community keeps members involved in the Society and promotes the credibility and dedication of Delta Kappa Gamma.

BETA GAMMA

By Julia Johnson

The chapter has been on the "Road to Excellence" this year with several projects to benefit the community. In September, school supplies were collected for students at the Transitional Shelter as well as the Pee Dee Crisis Center. This is an on-going project.

Another annual project is the purchase of dictionaries for third graders at Hannah Pamplico Elementary School. The dictionaries have come in and will soon be delivered to the students.

The annual auction raised over \$600 to fund other projects such as the Grant-in Aid for an education student at Francis Marion University and mini-grants for chapter members.

Members will continue to bring items for the Parent Child Home Program. Supporting the community keeps members involved in the Society and promotes the credibility and dedication of Delta Kappa Gamma.

ALPHA DELTA

By Anne Beckham

The chapter collected school supplies for first-year teachers at the first chapter meeting of the 2004-2005 year.

Pat Lare was named Substitute Teacher of the Year for Richland School District One.

Kathy Gibson is one of the authors of a book, *Powerful Allies: Afterschool Programs, Service-Learning and Community Education*.

The chapter extends deepest sympathy to Betty Lily, whose daughter Claire Boxt died December 1.

CHAPTER NEWS and TIDBITS

ALPHA EPSILON

By Joyce Wingate

Allison Smoak is a new member. Suzanne Switzer, a past president, was presented with the Master Instructor Award at O-C Tech. She was also inducted into the International Who's Who Historical Society.

Programs have offered much incentive to members. State President Nell Cannon challenged members to become involved in communities. Ed Kirkland, a founder of the Wingman Program at BC High, called for volunteers in the public schools. Suzanne Park Fitts, a physical therapist, emphasized the importance of exercise.

Projects include contributions of canned food to God's Helping Hands and the Family Crisis Center near Gaston and Swansea. Toys and clothing have been collected for the children of residents of Bryan Center. Min Zeng, a World Fellowship Scholarship recipient, has been "adopted" by the chapter and been given small gifts and notes of encouragement.

ALPHA BETA

By Betty Ann Souther

The chapter participated in the Clio Cotton Picking Festival in the fall with a book sale. The proceeds were used for the Carol Anne Covington Education Grant awarded annually to a student pursuing a career in education.

A fundraiser for the Grant was held at the Clio Country Club with a "Make It, Bake It, Take It" silent auction.

Pat Scoles, who is retired from teaching after 40 years, is working with all new teachers in the Marlboro County School District. She teaches the induction class.

The Discovery Singers and Dancers from the School of Discovery were featured in the ETV "Roadshow" in November. They are directed by Phyllis Hubbard and Bonnie Stillwell, chapter members.

ALPHA OMEGA

By Jackie Oates

The officers of the chapter are Sandra Gettys, president; Zelda Oates, first vice president; Dottie Kinlaw, second vice president; Roberta Ferguson, corresponding secretary; Lynn Grice, recording secretary; and Jo Anna Kennedy, treasurer.



Jo Anna Kennedy, Roberta Ferguson, Zelda Oates, Dottie Kinlaw, and Sandra Gettys lead Alpha Omega. Lynn Grice is not pictured.

The membership continues to grow. Sarah Kennerly and Lynn Patterson are two new members. Miranda Tichler has transferred from Omega chapter.

Program plans include a tribute to the founders, a Christmas party at the Hill House in Abbeville to honor the chapter's "adopted" girls from Connie Maxwell Children's Home, a joint meeting with sister chapters Epsilon and Iota, and a reception to honor the Abbeville County Teachers of the Year.

The chapter continues to promote these special projects: honoraria and memorials to Connie Maxwell Children's Home, grants-in-aid to an Erskine education major and to one student at each of the three county high schools.

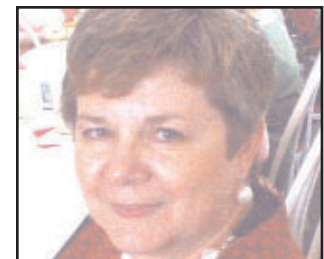
Fundraisers include a plant and book sale, a silent auction, door prizes, and "piggy bank" donations (such as 5 cents for each magnet on the member's refrigerator).

ALPHA MU

By Margaret Dunn



Joe Ann Lever, recently retired Academic Dean of the College of Arts and Sciences at Converse College, has been honored with the zoology lab being renamed the Joe Ann Lever Lab. In addition, an award in her name will be presented each year to the outstanding senior biology major.



Debra Bishop was honored by the Spartanburg Business and Professional Women's Club with the nomination for "Woman of the Year" award. She has been an educator for over 30 years and is currently assistant superintendent in charge of curriculum in Spartanburg County School District 6.



Vicki Bishop, music chairman, received the Young Careerist Award for the Spartanburg chapter of the Business and Professional Women's Club. Hattie Haulbrook, past president of Alpha Mu and a member of the Club, made the presentation.



EMBASSY SUITES HOTEL
200 STONERIDGE DRIVE
COLUMBIA, SC 29210-9983

DON'T FORGET —
MAKE CHECK OR MONEY ORDER
PAYABLE TO EMBASSY SUITES
HOTEL COLUMBIA.
DO NOT SEND CURRENCY.
(803) 252-8700
Fax (803) 256-8749

ORGANIZATION Delta Kappy Gamma
FUNCTION 2005 ALPHA ETA State Convention DATES 3/18/05 - 3/19/05

ALL REQUESTS FOR THE ABOVE GROUP MUST BE RECEIVED BY 2/16/05

Please reserve accommodations for _____ Print or Type
NAME _____ COMPANY _____
ADDRESS _____
CITY _____ STATE _____ ZIP CODE _____
SHARING ROOM WITH _____ NO. OF PERSONS _____
SIGNATURE _____ PHONE NUMBER _____

MONTH	DAY	YEAR	ARRIVAL TIME	MONTH	DAY	YEAR
ARRIVAL DATE				DEPARTURE DATE		

CHECK IN TIME **3:00 PM**
CHECK OUT TIME **12:00 PM**
 Smoking Non-Smoking

ACCOMMODATIONS WILL NOT BE CONFIRMED WITHOUT A CHECK FOR THE 1st NIGHT'S DEPOSIT OR USE YOUR CREDIT CARD # TO GUARANTEE YOUR RESERVATION. YOU WILL BE CHARGED FOR THE 1st NIGHT IF RESERVATIONS ARE NOT CANCELED 48 HOURS PRIOR TO ARRIVAL.

CREDIT CARD # _____ (PLEASE CHECK ONE)
EXPIRATION DATE _____ AMEX DINERS CLUB VISA MASTERCARD
 DISCOVER CARTE BLANCHE

PLEASE CIRCLE PREFERRED ACCOMMODATIONS			
	Two Double Beds	King	* All suite rates include:
1 Person	<u>112.00</u>	<u>112.00</u>	• Breakfast Buffet
2 Persons	<u>112.00</u>	<u>112.00</u>	• Manager's Cocktail Reception
3 Persons	<u>112.00</u>	<u>112.00</u>	* All rooms are suites.
4 Persons	<u>112.00</u>	<u>112.00</u>	* Rates are available only until date noted above.

IF RATE REQUESTED IS NOT AVAILABLE, NEAREST AVAILABLE RATE WILL BE ASSIGNED.
RATES ARE SUBJECT TO APPLICABLE TAXES.

17D-221

*** Please mail or fax this reservation card directly to the Embassy Suites. ***

\$1,588.75 Total contributions to HEADQUARTERS FUND & Quarters for Headquarters July 2004 - December 2004

July: Joan Benton (2) Alpha Sigma Lambda Alpha Sigma
Alpha Epsilon Carol Garrett Alpha Delta

September: Beta Epsilon Omicron Lambda Omicron Phi PI

October: Beta Gamma Alpha Psi
Hermie Gaston in memory of Hester Medlin
Hermie Gaston in memory of Wade Palmer

November: Alpha Eta State in memory of Wade Palmer
Alpha Zeta (3) Alpha Psi (2) in honor of Theta Chapter
Alpha Tau (Alma Holston) Alpha Phi

December: Alpha in memory of Jewell Vaughn Averyt
Helen Mulliken in lieu of mileage Hermie Gaston in lieu of mileage
Frances Murdock in lieu of mileage Mary Dallery in lieu of mileage
Florence Steele in lieu of mileage Carolyn Briscoe in lieu of mileage
Joan Benton in lieu of mileage
Alpha Eta State in memory of Hester Medlin

\$103 Total contributions to Florence Steele Travel Scholarship: Omicron (2) Alpha Zeta

\$50 Total contributions to Mary Eva Hite Scholarship: Beta Epsilon

THE ALPHA ETA STATE DIGEST

Janis K. Blocker, editor

20238 Augusta Hwy
Round O, SC 29474



NOW AVAILABLE

Alpha Eta State Bylaws and Standing Rules

\$2.00 per copy + 75 cents shipping and handling
10 copies only \$5.00 shipping and handling

EVERY member should have a copy, especially chapter officers. Order yours today!

Place orders with

Linda Heckle, executive secretary
Beta Beta
2205 Raven Trail
West Columbia, SC 29169
803.796.0892
linda@echeck.com

DATES TO REMEMBER

FEB. 1:

Achievement Award
Nominations due
Scholarship Applications
due

MAR. 18-19:

STATE CONVENTION

APRIL 15:

The Digest Deadline

JULY 20-23:

SOUTHEAST REGIONAL
Williamsburg, VA