

GENERAL INFORMATION FOR PSYCHIATRY CLERKSHIP BEFORE YOU START

1. Attached are THREE maps to Memorial in case you haven't been here before. Please call me if you get lost. My contact info is below. My office is on the second floor of the psych center, which is located on the corner of 35th Avenue and Johnson St. You will have to pass through what looks like an airport security gate to get to the elevators that take you to the second floor. My name is on the office door (along with my officemates' names). Please see pages 4 & 5 for off-site parking instructions.
2. Be at my office by 9am. No later. Account for travel and off-site transportation time. If you get here early and I am not in yet, there is a key hidden in the handrail outside my door. Just take it out and let yourself in. We have our first meeting (detox unit) at 9am, so I will take you directly there once we are all together.
3. Please print out the ORIENTATION PACKET (SYLLABUS) and PSYCHOPHARMACOLOGY LECTURES prior to the first day of rotation. Also begin to prepare for the psychiatry rotation by reading the psych chapters in Dipiro. We are going to jump right into the lectures in the first week, so I don't want anyone getting behind. There is a lot of material to cover, but don't worry, we will go over EVERYTHING together.

Have a good weekend and read-up when you get the chance.

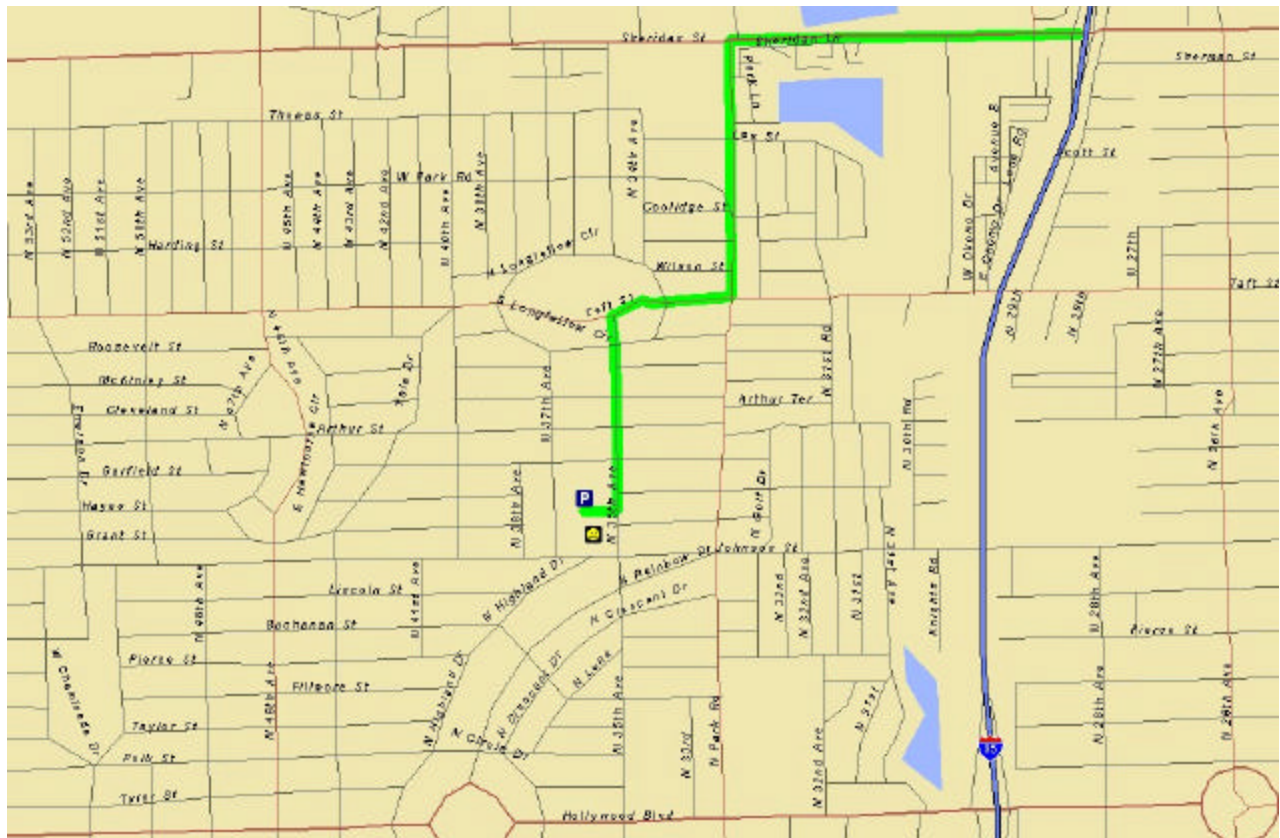
Dr. Rappa

--

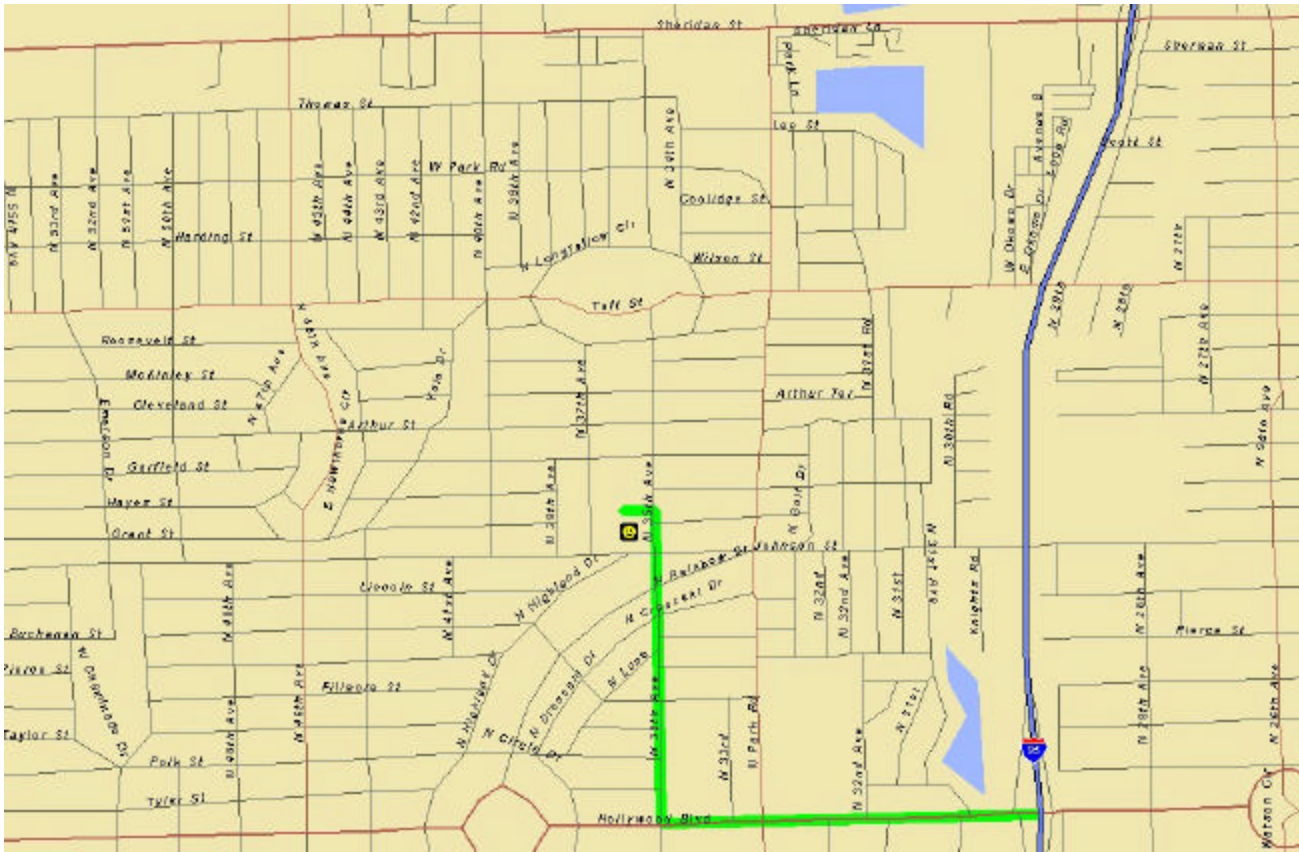
```
[
[ Leonard Rappa, Pharm.D., BCPP
[ Assistant Professor, Florida A&M University, College of Pharmacy
[ *NEW Email:      rxpsych@yahoo.com
[ *NEW Beeper:     954-814-6510
[ *NEW Cellphone:  954-270-8878
[ E-Fax:           603-299-7855 (get faxes to your email free at www.efax.com)
[ Office:         954-987-2020, ext. 4613 (Memorial Regional Hospital)
[
```



MRH Close up - both Visitor's Garage and Psych Parking lots



Directions to MRH from the North (I-95)

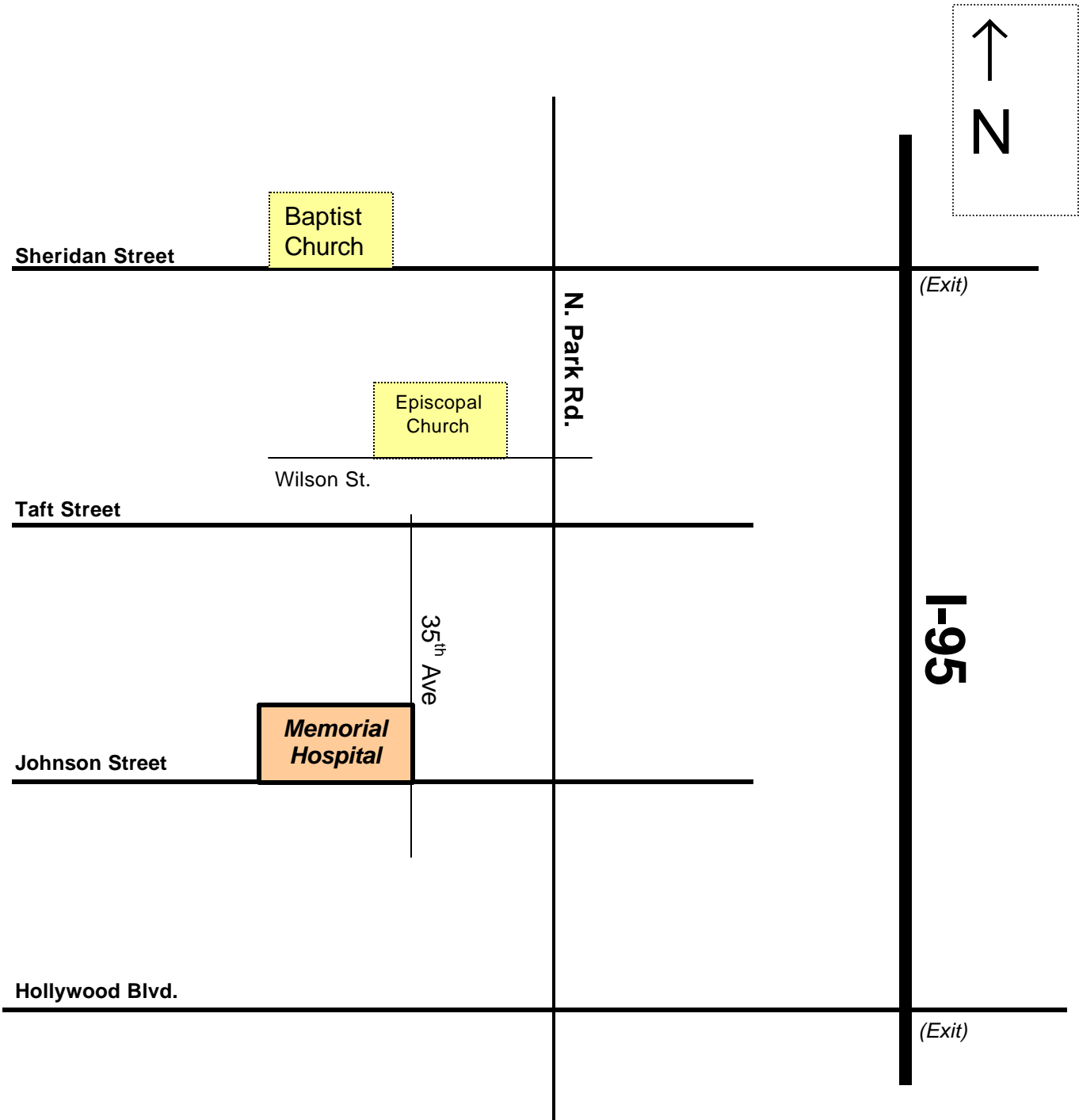


Directions to MRH from the South (I-95)

NEW MANDATORY PARKING GUIDELINES AS OF SEPTEMBER 2000

Students are no longer permitted to park on hospital grounds. All students **MUST PARK** at an off-site location and take the hospital-provided shuttle to and from the hospital. The off-site locations are at the Baptist Church on Sheridan Street (west of North Park Road on the North side of the street) and the Episcopal Church on Wilson Street (1 block west of North Park Road between Taft Street and Sheridan Street).

Directions are below. You may receive a cafeteria voucher for using this shuttle.



Directions to MRH

From the North or South:

Take I-95 to Hollywood Blvd. Go west (left). Make a right turn on 35th Ave (approx. ½ mile). Cross over Johnson Street and you'll see the hospital on your left. Keep driving straight up to Taft Street. Make a right turn and then a left after the school's field. You'll see a church dead ahead. Please observe information on the previous page for mandatory off-site parking.

Directions from the West:

Take Pines Blvd (Hollywood Blvd) east past the turnpike, past 441, past the big circle (with the big blue glass building). Make a left turn on to 35th Ave. Cross over Johnson Street and you'll see the hospital on your left. Keep driving straight up to Taft Street. Make a right turn and then a left after the school's field. You'll see a church dead ahead. Please observe information on the previous page for mandatory off-site parking.

