

# Kingdoms Comparison Chart

You will be creating a table that compares the major kingdoms, or types, of life on Earth. Use your textbook to find the information you need to complete the table.

1. Your table will have 4 columns titled as shown below...

<b>Kingdom</b>	<b>Characteristics Shared</b>	<b>Environment</b>	<b>Examples</b>
----------------	-------------------------------	--------------------	-----------------

2. Your table will have 5 rows beneath your column headings. Label your rows under your "Kingdom" column as shown below...

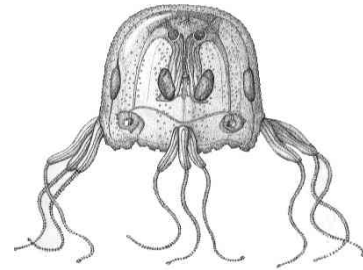
**Monera**

**Protists**

**Fungi**

**Plants**

**Animals**



3. Look through Chapters 14 - 21 in your textbook to find the appropriate sections for each kingdom you have listed in order to fill out your table. Your task is to list the characteristics that are shared between members of each kingdom, the environment they typically live in, and some examples of organisms you would find in each kingdom.