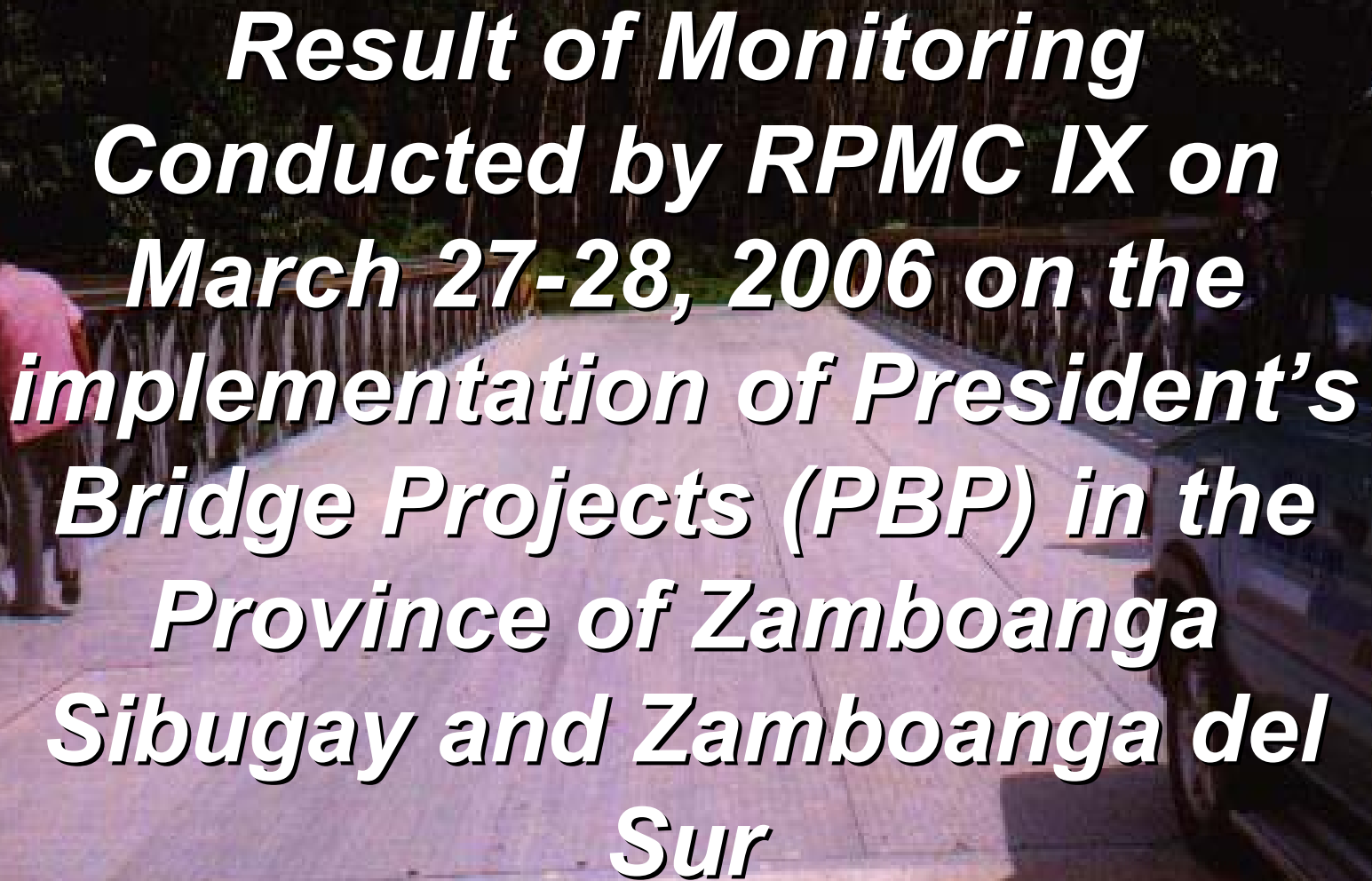


A steel truss bridge spans across a river in a lush, green, hilly area. The bridge has a complex lattice structure. A vehicle is visible on the bridge. The river flows through the center, with rocky banks and dense vegetation in the background.

# President's Bridge Program Zamboanga Sibugay

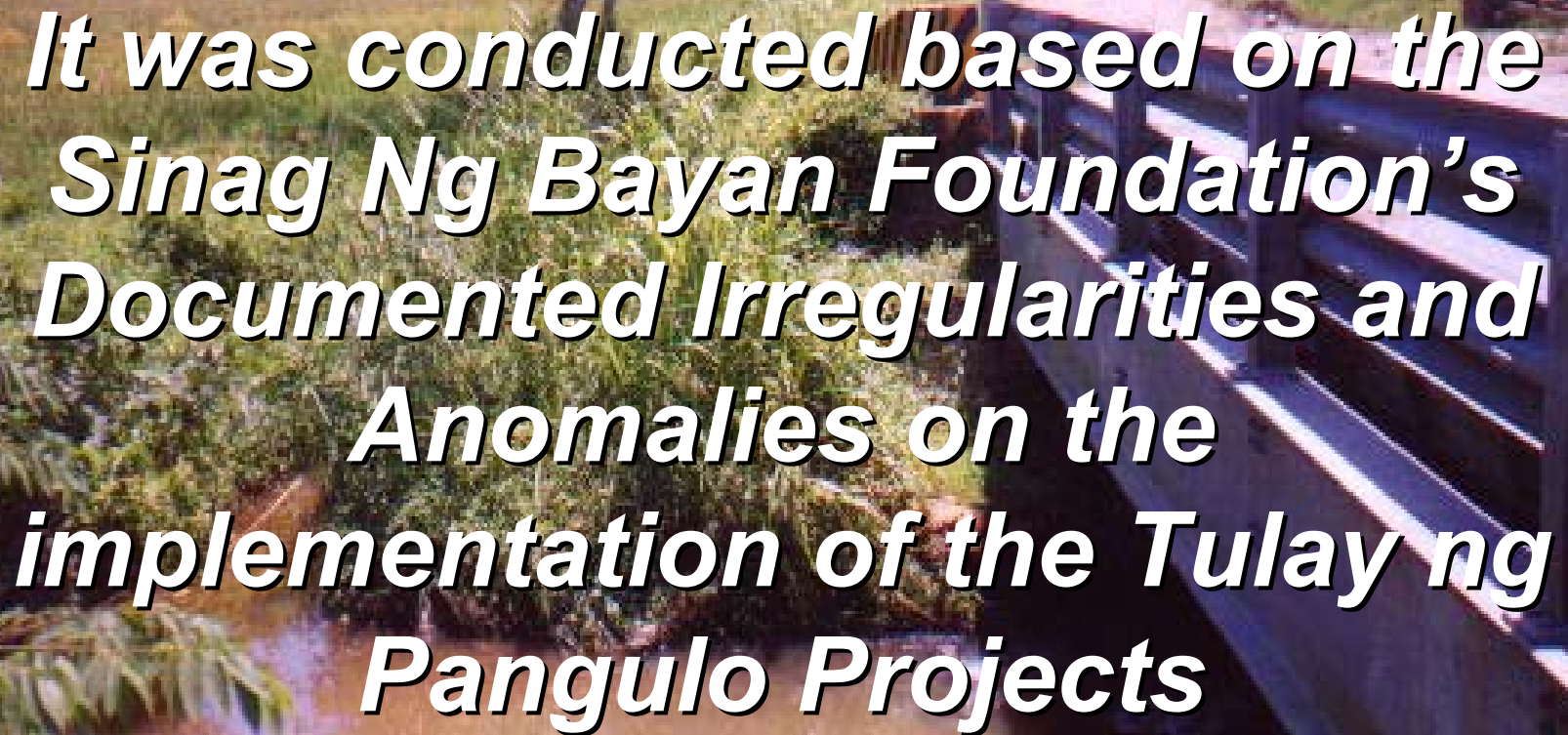
Implemented by Tulay Ng Pangulo  
sa SZOPAD Mindanao/DPWH

A photograph of a concrete bridge with a person walking on it, overlaid with white text. The text is centered and reads: 

***Result of Monitoring  
Conducted by RPMC IX on  
March 27-28, 2006 on the  
implementation of President's  
Bridge Projects (PBP) in the  
Province of Zamboanga  
Sibugay and Zamboanga del  
Sur***

The image shows a dirt road with a metal guardrail on the right side. The road is unpaved and appears to be in a rural or undeveloped area. The background is a solid blue color. The text is overlaid on the image in a bold, white, italicized font with a black outline.

***The monitoring was conducted in coordination with the Provincial Planning and Development Office (PPDO) of Zamboanga Sibugay and concern municipalities where the projects were located.***

A photograph of a concrete bridge over a river. The bridge has a dirt road on top and a metal railing. The river is brown and murky. There are green plants and trees in the background. The text is overlaid on the image.

***It was conducted based on the  
Sinag Ng Bayan Foundation's  
Documented Irregularities and  
Anomalies on the  
implementation of the Tulay ng  
Pangulo Projects***

(Sinag Ng Bayan Foundation  
Evaluation)

**BRIDGES  
THAT LEAD TO  
NOWHERE  
AND  
DEAD ENDS.**



**Songcuya Bridge**



Location:  
**Diplahan, Zamboanga Sibugay**  
Project Cost: **P4,822,974.40**  
Evaluation: **No existing road. A wasted two-lane bridge leading to a small path way in the middle of a ricefield.**



## **RPMC IX Evaluation on Songcuya Bridge, Diplahan, Zamboanga Sibugay**

### **Findings:**

- The bridge is located in the middle of the ricefield leading to a trail.
- The structure is being used as dryer of palay by nearby residents.
- Culvert pipe is also suitable for this particular project.
- Road Leading to the Bridge is unpassable. Accordingly, road to complement the bridge was already proposed in the INFRES program of DA IX.
- Lack maintenance. Grasses growing in both approaches.
- The bridge was implemented without RDC IX and PDC endorsement.

### **Recommendations:**

- The local government of Diplahan, Zamboanga Sibugay should maintain and upkeep the bridge to prolong its life until such time that the road to complement the bridge is implemented. Construct immediately corresponding roads



Location:  
**Diplahan, Zamboanga Sibugay**

Project Cost: **P4,822,974.40**

Evaluation:  
**A two-lane bridge built in the middle of a ricefield leading to nowhere.**

**Natan Bridge**





## **RPMC IX Evaluation on Natan Bridge, Diplahan, Zamboanga Sibugay**

### **Findings:**

- No road after the Bridge. Accordingly, road to complement the bridge was already proposed in the INFRES program DA IX.
- The structure is being used as hollow block making of one of the residents in the area, the deck of the bridge is being used to stock aggregates used for hollow block making and drying of finish blocks.
- Lack maintenance. Grasses are growing in both approaches as well as bushes on the trusses of the bridge.
- No flood control constructed and no capacity sign in place.
- The bridge was implemented without RDC IX and PDC endorsements.

### **Recommendations:**

- The local government of Diplahan, Zamboanga Sibugay should maintain and upkeep the bridge to prolong its life until such time that the road to complement the bridge is implemented.. Construct immediately road leading to the bridge. Provide flood control structure to prevent scouring of approaches and put capacity sign.

(Sinag Ng Bayan Foundation  
Evaluation)

**TWO-LANE BRIDGES  
CONNECTING SINGLE-  
LANE  
DIRT ROADS**



Location: **Diplahan, Zamboanga Sibugay**

Project Cost: **P16,852,889.08**

Evaluation: **A long costly two-lane bridge on a one-lane dirt road.**

**Sampoli A- Sampoli B Bridge**





## **RPMC IX Evaluation on Sampoli A-Sampoli B Bridge, Diplahan, Zamboanga Sibugay**

### **Findings:**

- Lack maintenance. Grasses are growing in both approaches
- Bridge has a width of 7 meters constructed along the existing barangay road with a width of 4 meters. Bridge was constructed along the road leading to the municipality of Bayog, Zamboanga del Sur.
- Poor condition of approaches.
- No flood control constructed and no capacity sign on approaches.
- Implemented by virtue of PDC Res. No. 08 s 2002 and RDC IX Res. No. IX-016-2002

### **Recommendations:**

The local government of Diplahan, Zamboanga Sibugay should maintain and upkeep the bridge to prolong its life. Rehabilitate both approaches of the bridge. Provide flood control to prevent scouring of approaches and put capacity sign.

## Mabini Bridge



Location:  
**R.T. Lim,  
Zamboanga Sibugay**

Project Cost:  
**P7,228,957.34**

Evaluation:  
**A costly two-lane bridge  
built over a small creek  
leading to a one-lane  
rough road.**



## **RPMC IX Evaluation on Mabini Bridge, R.T. Lim, Zamboanga Sibugay**

### **Findings:**

- Lack maintenance. Grasses growing in both approaches and engulfing the trusses of the bridge. Bridge has a width of 7 meters constructed along the existing barangay roads with a width of 4 meters.
- Dirt and mud covers the deck of the bridge
- No flood control constructed and no capacity sign on approaches.
- Implemented without PDC and RDC IX Resolution.

### **Recommendations:**

The local government of R.T. Lim, Zamboanga Sibugay should maintain and upkeep the bridge to prolong its life, cut grasses and bushes along the approaches of the bridge and which are engulfing the trusses of the bridge. Provide canals on both side of the road leading to the bridge to prevent rain water flowing on the deck of the bridge. Provide flood control to prevent scouring of approaches and provide capacity sign.



**Silingan Bridge**

Location:  
**R.T. Lim, Zamboanga Sibugay**  
Project Cost: **P9,634,940.27**

Evaluation: **A costly double-lane bridge on a single lane dirt road. A number of metal screws and bolts missing.**





## **RPMC IX Evaluation on Silingan Bridge, R.T. Lim, Zamboanga Sibugay**

### **Findings:**

- Lack maintenance. Grasses growing in both approaches and bushes engulfing the trusses of the bridge. Dirt and mud covers the deck of the bridge.
- Bridge has a width of 7 meters constructed along the existing barangay roads with a width of 4 meters.
- No flood control and no capacity sign on approaches
- Implemented by virtue of PDC Res. No. 08 s 2002 and RDC IX Res. No. IX-016-2002

### **Recommendations:**

The local government of R.T. Lim, Zamboanga Sibugay should maintain and upkeep the bridge to prolong its life, cut grasses and bushes along the approaches of the bridge which are engulfing the trusses of the bridge. Provide canals on both side of the road to prevent rain water flowing on the deck of the bridge. Provide flood control to prevent scouring of approaches and provide capacity sign.



## **Sanito-Santan Bridge**

**Location: Ipil, Zamboanga Sibugay**

**Project Cost: P7,228,957.34**

**Evaluation:**

**A costly two-lane bridge on a single-lane dirt road crossing a small creek.**



## **RPMC IX Evaluation on Sanito-Santan Bridge, Ipil, Zamboanga Sibugay**

### **Findings:**

- Lack maintenance. Grasses are growing in both approaches and bushes are engulfing the trusses of the bridge. Dirt and mud on the deck of the bridge was observed.
- Bridge has a width of 7 meters constructed along the existing barangay roads with a width of 4 meters.
- Accordingly the bridge is not being used.
- No flood control and no capacity sign on approaches
- Implemented without PDC and RDC IX Resolution

### **Recommendations:**

The local government of Ipil, Zamboanga Sibugay should maintain and upkeep the bridge to prolong its life, cut grasses along the approaches of the bridge and bushes engulfing the trusses of the bridge. Provide canals on both side of the road to prevent mud flowing on the deck of the bridge. Provide flood control to prevent scouring of approaches and provide capacity sign.

(Sinag Ng Bayan Foundation  
Evaluation)

**BRIDGES  
FOUND TO HAVE SERIOUS  
DEFECTS THAT  
COMPROMISE THEIR  
SAFETY**



## Camayo Bridge

Location: **Kabasalan, Zamboanga Sibugay**

Project Cost: **P6,025,965.87**

Evaluation:

**A costly two-lane bridge leading to the single lane dirt road.  
Erosion under the bridge is already evident.**



## **RPMC IX Evaluation on Camayo Bridge, Kabasalan, Zamboanga Sibugay**

### **Findings:**

- At the time of field inspection, construction of flood control is ongoing, Mayor Chu of Kabasalan is personally supervising the ongoing maintenance of the bridge. Well maintained bridge.
- The bridge connects to three (3) Barangays
- No bridge capacity sign.
- Implemented without PDC and RDC IX Resolution

### **Recommendations:**

The local government of Kabasalan, Zamboanga Sibugay should continue maintenance and upkeep of the Bridge. Provide bridge capacity sign



Location:  
**Diplahan, Zamboanga Sibugay**  
Project Cost: **P7,228,957.34**

Evaluation: **A costly two-lane bridge with a weak foundation, on a single-lane dirt road. The river overflows to the bridge when the rains fall.**

**Boyugan Bridge**





## **RPMC IX Evaluation on Boyugan Bridge, Diplahan, Zamboanga Sibugay**

### **Findings:**

- Lack maintenance. Grasses are growing in both approaches and engulfing the trusses of the bridge. There are mud and dirt on the deck of the bridge.
- Bridge has a width of 7 meters constructed along the existing barangay roads with a width of 4 meters only.
- No Capacity sign
- One side of the approach has already deteriorated due to scouring, since no flood control was constructed on both approaches
- Implemented without PDC and RDC IX Resolution

### **Recommendations:**

The local government of Diplahan, Zamboanga Sibugay should maintain and upkeep the bridge to prolong its life, cut grasses along the approaches of the bridge and bushes engulfing the trusses of the bridge.. Rehabilitate both approaches and construct Flood control to prevent scouring and provide capacity sign.



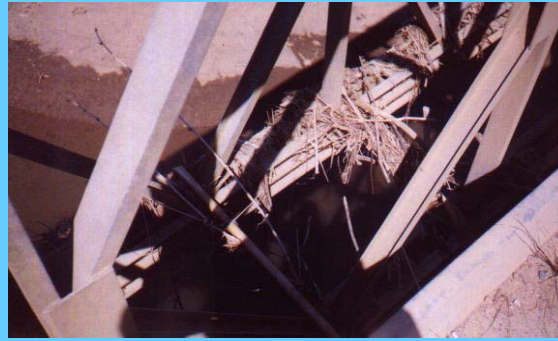
**Depase Bridge**



Location: **Bayog,  
Zamboanga Del Sur**  
Project Cost: **P17,186,320**

Evaluation: **A sub-standard  
two-lane bridge with a  
number of missing metal  
screws and bolts  
connecting to a single lane  
dirt road.**





## **RPMC Evaluation on Depase Bridge, Bayog, Zamboanga del Sur**

### **Findings:**

- Lack of bolt and channel bar on the truss on one side of the bridge. Accordingly, it was cannibalized by one of the residents and charges were already filed against the culprit together with the one who bought the bolt and channel Bar.
- The bridge was constructed along provincial road that lead to Buug, Zamboanga Sibugay
- Lack maintenance. A traces of trash brought about recent flood were still hanging on the trusses of the bridge.
- No Flood Control at the approach of the bridge and no capacity sign.
- Implemented by virtue of PDC Res. No. 05-2001 and RDC IX Res. No. IX-011-01

### **Recommendations:**

The local government of Bayog, Zamboanga del Sur should maintain and upkeep the bridge. For the LGU to request the Tulay Ng Pangulo sa SZOPAD Mindanao/DPWH for the replacement of bolt and channel bar for the bracing of the truss that support the bridge. Construct flood control to prevent scouring of the approaches and provide capacity sign.

(Sinag Ng Bayan Foundation  
Evaluation)

**BRIDGES  
INSTALLED OVER DRIED-  
UP CREEKS  
AND RIVERBEDS**

## San Jose Bridge



Location:

**Buug,  
Zamboanga Sibugay**

Project Cost:

**P13,920,940.27**

**Evaluation: A costly two-lane bridge leading to a single lane dirt road below, crossing a small stream.**



## **RPMC IX Evaluation on San Jose Bridge, Buug, Zamboanga Sibugay**

### **Findings:**

- Lack maintenance. Grasses are growing on both approaches and bushes are engulfing the trusses of the bridge
- Bridge has a width of 7 meters constructed along the existing barangay road with a width of 4 meters only.
- No Flood Control at the approach of the bridge
- The deck of the bridge was covered with mud.
- No capacity sign

### **Recommendations:**

The local government of Buug, Zamboanga Sibugay should maintain and upkeep the bridge, provide canals on both side of road leading to the bridge to prevent water flow on the deck of bridge. Construct flood control to prevent scouring of the approaches and provide capacity sign.

**Salamat**

**po....**