

## *Metsakukkia (means forest flowers)*



Pattern & images © 2006 [Ziina](#)

*The shawl is started from top and decreased to the tip. The flower pattern would not look the same if knitted otherwise. Make sure you have enough yarn before you start!*

There's 19 sts by the each edge of the shawl, and the middle there has to be amount of stitches that could be divided by eight, for example 78-86-95-102-110-118-126-134-142-150-158 etc. so that the pattern would decrease as shown in diagram.

I used Filati Baronesse (50g/150m) mohair yarn and my shawl took 100 g of yarn. Still there were only few metres of leftover-yarn, so I'd recommend to buy at least 150 g of medium thick mohair.

Measures: 155 cm wide and 80 cm high

Gauge / 10 cm : 9 sts and 19 rows stockinette with 6mm needles









Use boldly any kind of yarns and gauges, I recommend two size bigger needles to lace knitting.



*Pattern & images* © 2006 [Ziina](#)

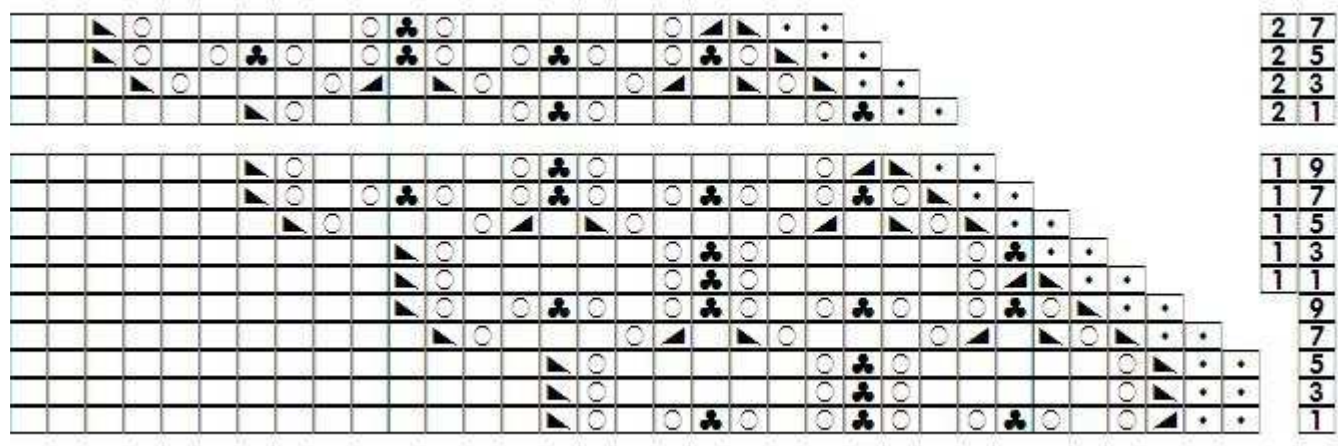
*Cast loosely! Cast 19 sts+78-86-95-102-110-118-126-134-142-150...+19 sts.* Knit 4 rows of garter sts and then begin the pattern from bottom of the right edge. On WS always knit the two edge sts, purl the rest. Repeat rows 21-28 until you have only 14 sts of stockinette between the flower borders. After that, use the last diagram (TIP OF SHAWL) to finish the shawl. The numbers on the middle of the shawl indicate how many knit stitches there should be.

Explanations:

-  = pick one knitwise, knit two together, pssso
-  = yarnover
-  = knit two together
-  = knit two together through back of the loops
-  = knit sts
-  = garter sts
-  = pick one knitwise, knit one, pssso
-  = nothing, marking is for technical reasons

RIGHT EDGE OF THE SHAWL

OIKEA REUNA





TIP OF SHAWL

Pattern & images © 2006 [Ziina](#)

