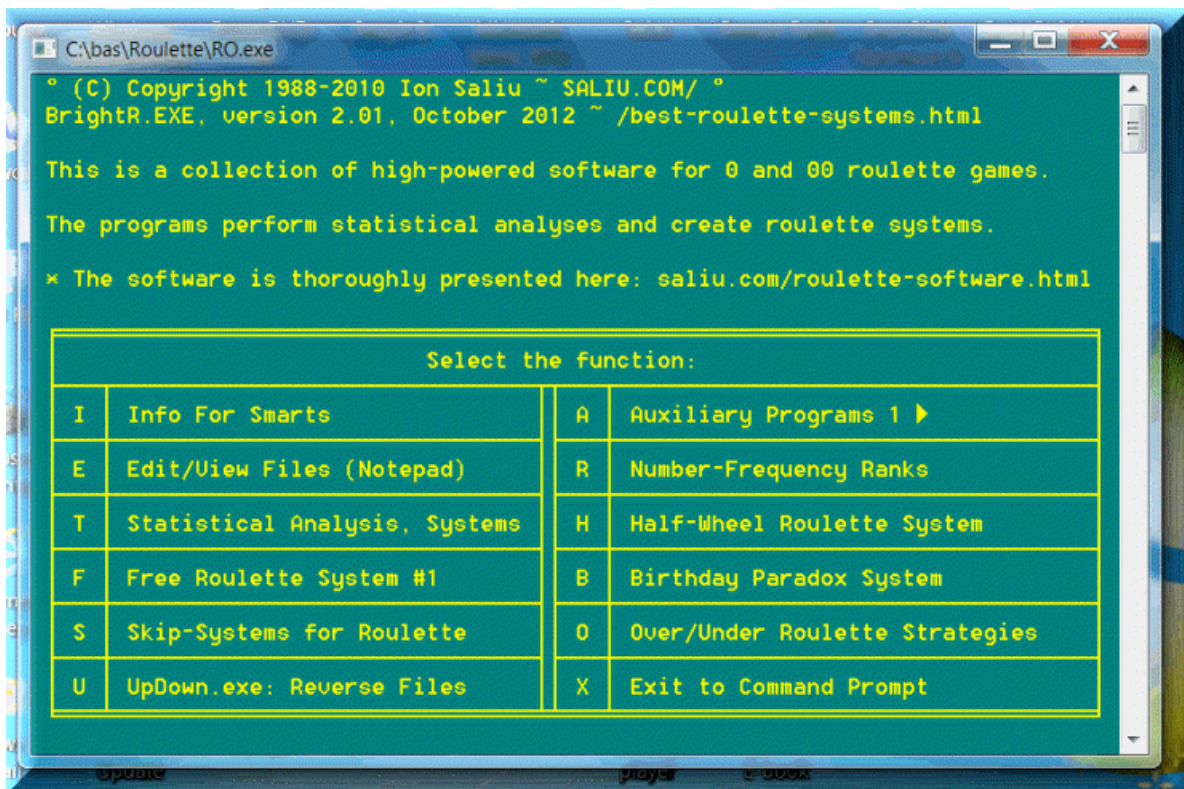


Why casino executives fight mathematical gambling systems

Casino Gambling Software: Baccarat, Blackjack, Roulette, Craps, Systems, Basic Strategy

Software for Lottery, Lotto, Pick 3 4 Lotteries, Powerball, Mega Millions, Euromillions, Keno, Horse Racing, Blackjack, Roulette, Baccarat, Sports Betting, Gambling, Probability, Odds, Statistics, Mathematics

Download the Best Software for Lottery, Gambling, Lotto, Powerball, Mega Millions, Euromillions, Horse Racing, Blackjack, Roulette, Sports Betting, Probability, Statistics



The System Itself

Two-Step is a worthy system, all the more beautiful for its ease and simplicity, and to add to its charm it can also be played on the dozens instead of the columns. These are laid out along the edge of the inside, in between the inside and the even money bets. (See fig. 11.1, the Dozens.) They come in three varieties, 1–12, 13–24 and 25–36, and they're the same thing mathematically as the columns. What this means is that, if you're smart enough to stay invisible, Two-Step provides fully *six* new progressions for you to keep track of in that secret little notebook. Remember, you're playing many, many progressions at once, betting a single bet at every new roulette table

ODD	3rd 12 X	28	29	30
19 to 36		31	32	33
		34	35	36
		2 to 1	2 to 1	2 to 1

Fig. 11.1. The Dozens

you sit down to. In each case, the boxperson won't see anything except random bets all over the layout.

Mathematical Analysis

Trilogy is three separate games of Two-Step played at the same wheel. It's profitable because Two-Step is profitable and Trilogy is three separate games of Two-Step going on simultaneously.

Table 11.1 is a demonstration Trilogy game and clearly indicates what a hectic ride it can be. The very first thing you'll notice is that almost the entire game is spent in deficit, more than an hour of running at an unrelieved loss, until finally the cumulative weight of all those theoretical winnings begins to assert itself and force a profit. The play on this game was hectic due to above-average activity in the middle column. That column kept winning more than it should have, at the expense of the third column, which wasn't winning at all, or hardly at all. The first column, though, was just about average in wins and losses.

Let's consider table 11.1, column by column, as three separate games of Two-Step running side by side and see how they affect each other.

Trilogy

AMOUNTS AND DECISIONS (W = WIN)

BET No.	COL 1	D	COL 2	D	COL 3	D	TOTAL OUT	TOTAL IN	PROFIT
1	\$18		\$18	W	\$18		\$54	\$54	\$0
2	19	W	16		19		108	111	3
3	17	W	17		20		162	162	0
4	15		18	W	21		216	216	0
5	16		16	W	22		270	264	-6
6	17	W	14		23		324	315	-9
7	15		15	W	24		378	360	-18
8	16	W	13		25		432	408	-24
9	14		14	W	26		486	450	-36
10	15		12	W	27		540	486	-54
11	16		10		28	W	594	570	-24
12	17	W	11		26		648	621	-27
13	15		12		27	W	702	702	0
14	16		13	W	25		756	741	-15
15	17		11		26	W	810	819	9
16	18		12	W	24		864	855	-9
17	19		10	W	25		918	885	-33
18	20		8		26	W	972	963	-9
19	21	W	9		24		1,026	1,026	0
20	19		10		25	W	1,080	1,101	21
21	20		11		23	W	1,134	1,170	36
22	21		12	W	21		1,188	1,206	18
23	22		10	W	22		1,242	1,236	-6
24	23		8	W	23		1,296	1,260	-36
25	24		6	W	24		1,350	1,278	-72
26	25		4		25	W	1,404	1,296	-108
27	26	W	5		23		1,458	1,374	-84
28	24		6	W	24		1,512	1,392	-120
29	25		4		25	W	1,566	1,467	-99
30	26		5		23	W	1,620	1,536	-84
31	27		6		21	W	1,674	1,599	-75
32	28	W	7		19		1,728	1,683	-45
33	26		8	W	20		1,782	1,707	-75
34	27		6		21	W	1,836	1,770	-66
35	28	W	7		19		1,890	1,854	-36
36	26		8		20	W	1,944	1,914	-30
37	27		9	W	18		1,998	1,941	-57
38	28		7	W	19		2,052	1,962	-90

AMOUNTS AND DECISIONS
(W = WIN)

BET NO.	COL 1	D	COL 2	D	COL 3	D	TOTAL OUT	TOTAL IN	PROFIT
39	29		5		20	W	2,106	2,022	-84
40	30	W	6		18		2,160	2,112	-48
41	28	0	7	0	19	0	2,214	2,112	-102
42	29	W	8		20		2,271	2,199	-72
43	27	W	9		21		2,328	2,280	-48
44	25	W	10		22		2,385	2,355	-30
45	23		11	W	23		2,442	2,388	-54
46	24	W	9		24		2,499	2,460	-39
47	22	W	10		25		2,556	2,526	-30
48	20	W	11		26		2,613	2,586	-27
49	18		12	W	27		2,670	2,622	-48
50	19		10	W	28		2,727	2,652	-75
51	20		8	W	29		2,784	2,676	-108
52	21	W	6		30		2,841	2,739	-102
53	19		7		31	W	2,898	2,832	-66
54	20	0	8	0	29	0	2,955	2,832	-123
55	21		9	W	30		3,015	2,859	-156
56	22		7	W	31		3,075	2,880	-195
57	23	W	5		32		3,135	2,949	-186
58	21	W	6		33		3,195	3,012	-183
59	19		7	W	34		3,255	3,033	-222
60	20		5		35	W	3,315	3,138	-177
61	21		6	W	33		3,375	3,156	-219
62	22	W	4		34		3,435	3,222	-213
63	20		5		35	W	3,495	3,327	-168
64	21		6	W	33		3,555	3,345	-210
65	22	W	4		34		3,615	3,411	-204
66	20		5		35	W	3,675	3,516	-159
67	21		6		33	W	3,735	3,615	-120
68	22	W	7		31		3,795	3,681	-114
69	20	W	8		32		3,855	3,741	-114
70	18		9		33	W	3,915	3,840	-75
71	19		10		31	W	3,975	3,933	-42
72	20		11		29	W	4,035	4,020	-15
73	21		12	W	27		4,095	4,056	-39
74	22		10	W	28		4,155	4,086	-69
75	23	W	8		29		4,215	4,155	-60
76	21		9		30	W	4,275	4,245	-30
77	22		10	W	28		4,335	4,275	-60
78	23		8		29	W	4,395	4,362	-33
79	24		9	W	27		4,455	4,389	-66
80	25	W	7		28		4,515	4,464	-51

BET No.	AMOUNTS AND DECISIONS (W = WIN)						TOTAL OUT	TOTAL IN	PROFIT
	COL 1	D	COL 2	D	COL 3	D			
81	23	W	8		29		4,575	4,533	-42
82	21		9	W	30		4,635	4,560	-75
83	22		7		31	W	4,695	4,653	-42
84	23		8		29	W	4,755	4,740	-15
85	24		9		27	W	4,815	4,821	6
86	25	W	10		25		4,875	4,896	21
87	23		11		26	W	4,935	4,974	39
88	24		12	W	24		4,995	5,010	15
89	25	W	10		25		5,055	5,085	30
90	23		11	W	26		5,115	5,118	3
91	24		9		27	W	5,175	5,199	24
92	25		10		25	W	5,235	5,274	39
93	26		11		23	W	5,295	5,343	48
94	27		12		21	W	5,355	5,406	51
95	28		13	W	19		5,415	5,445	30
96	29	0	11	0	20	0	5,475	5,445	-30
97	30	W	12		21		5,538	5,535	-3
98	28		13		22	W	5,601	5,601	0
99	29	W	14		20		5,664	5,688	24
100	27	W	15		21		5,727	5,769	42
101	25	W	16		22		5,790	5,844	54
102	23	W	17		23		5,853	5,913	60
103	21		18		24	W	5,916	5,985	69
104	22		19		22	W	5,979	6,051	72
105	\$23	W	\$20		\$20		\$6,042	\$6,120	\$78

(106)

Our first column was typical, starting at \$18, reaching a low of \$14 on the ninth turn, a high of \$30 on the fortieth turn, and finishing reasonably at \$21 on the one hundred and sixth turn.

The second column, too, began at \$18, but plummeted. It won on the very first turn of the wheel and the amount of its bet immediately began falling and got back up to \$18 again only on the one hundred and third turn of the wheel, closing at \$20 on turn 105 after falling as low as \$4 on four different occasions.

Column three hit a high of \$35, the highest bet laid in this whole Trilogy game, then came down again. At game's end,

when I arbitrarily quit after 105 turns, the progression on the third column was ready to bet \$21.

Notice bets Nos. 41, 54 and 96. They're all zeros. All of the columns lost on those bets, and as you can see from table 11.1, it played havoc with the profit column. In a regular game of Two-Step the zeros are scored simply as another loss and don't appear on the balance sheet as anything other than a normal loss, but in Trilogy the zeros are always quite an event, mathematically and emotionally. If you get enough of them in a single game, it'll destroy you.