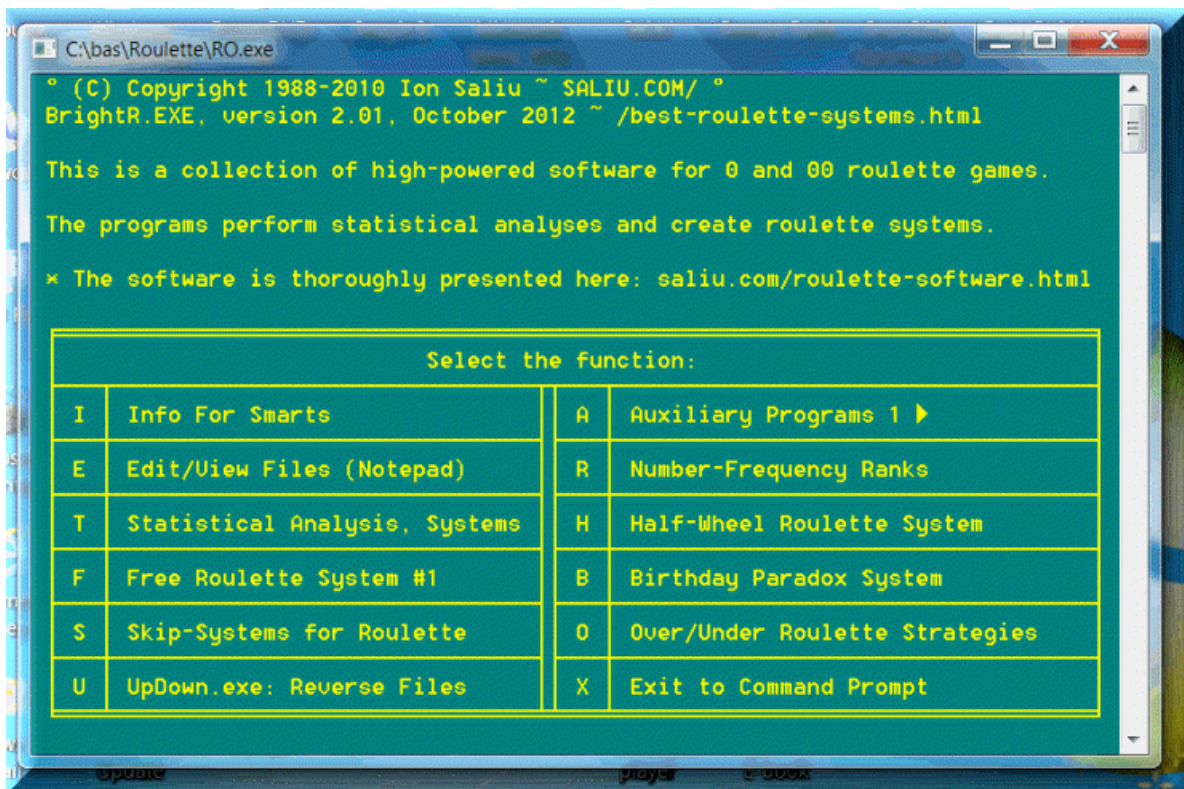


Why casino executives fight mathematical gambling systems

Casino Gambling Software: Baccarat, Blackjack, Roulette, Craps, Systems, Basic Strategy

Software for Lottery, Lotto, Pick 3 4 Lotteries, Powerball, Mega Millions, Euromillions, Keno, Horse Racing, Blackjack, Roulette, Baccarat, Sports Betting, Gambling, Probability, Odds, Statistics, Mathematics

Download the Best Software for Lottery, Gambling, Lotto, Powerball, Mega Millions, Euromillions, Horse Racing, Blackjack, Roulette, Sports Betting, Probability, Statistics



PIVOT ROULETTE SYSTEM

Spend some time at a roulette table prior to commencing play and write down the winning number of each spin until one number repeats. The repeat number is your "pivot number" and therefor the number on which you place your first bet.

Example: **12** 23 33 36 29 7 8 **12** 4

Number 12 is the first repeat number and therefor the "pivot number".

Number 12 will remain the "pivot number" for the next 36 spins in a row unless it wins.

Bet the same amount on your pivot number for each spin until you either win or lose at the end of the thirty-sixth spin. A win on a single number in roulette will pay 35/1, so if your "pivot number" spins up anytime throughout the 36 spins you will be a winner. (Or break even if it comes up on the last spin.) Naturally, the earlier your "pivot number" spins up the better the profits because your profits will decrease with every spin of the wheel.

When you have a win, stop betting on that "pivot number" and select another one to start the process over again.

Why Does It Work?

It is a fact that numbers on a roulette wheel tend to repeat often. On average, the same 24 numbers will appear in 36 spins of the wheel. Rarely, if ever, will all 36 numbers appear in 36 spins.

What does this mean? It means that on average, in 36 spins, you must have 12 repeat numbers.

This could be just one repeat of each of the 12 numbers but it will more than likely be a repeat of few numbers coming up three or even four times each. This is not theory. It is proven fact derived from thousands of spins of a roulette wheel. What we have just described simply keeps on happening over and over again!

It's what's called the theory of uneven distribution. During a short trial of 36 spins, not all numbers will appear, but certainly over trials of millions of spins all roulette numbers will even out.

Why casino executives fight mathematical gambling systems

Casino Gambling Software: Baccarat, Blackjack, Roulette, Craps, Systems, Basic Strategy

Software for Lottery, Lotto, Pick 3 4 Lotteries, Powerball, Mega Millions, Euromillions, Keno, Horse Racing, Blackjack, Roulette, Baccarat, Sports Betting, Gambling, Probability, Odds, Statistics, Mathematics

Download the Best Software for Lottery, Gambling, Lotto, Powerball, Mega Millions, Euromillions, Horse Racing, Blackjack, Roulette, Sports Betting, Probability, Statistics

