

Ramona Branch Library

San Diego County Library



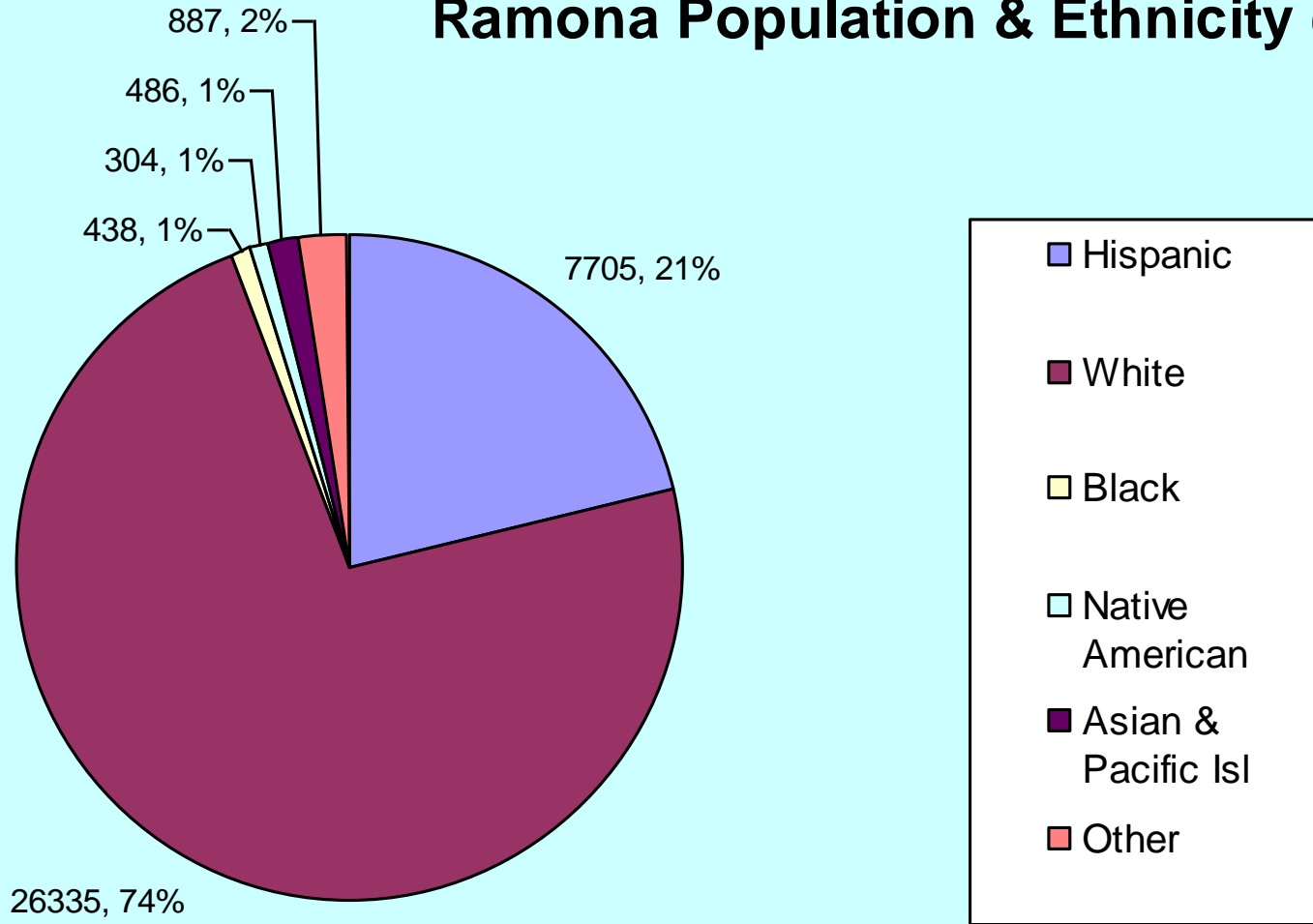
Ellie Slade, MLIS, MSEd
Branch Librarian
Libros Secretary
Reforma San Diego
Sept. 20, 2008



Ramona, CA FACTS

- Western Rural unincorporated town
 - **Mission grant town 1st inhabited by Native Americans, Spanish & transferred to US at the Battle of San Pasqual**
- About 45 miles from San Diego
- Population about 36,000 in 2007
- Population about 56,000 in 2030

Ramona Population & Ethnicity (2008)



Map



Existing Library

- 4800 feet
- Existing programs:
 - ESL, literacy, arts,
 - Music, Summer Reading
 - Current events
 - Homework Club
 - Disaster training
 - Storytelling
 - Multicultural events

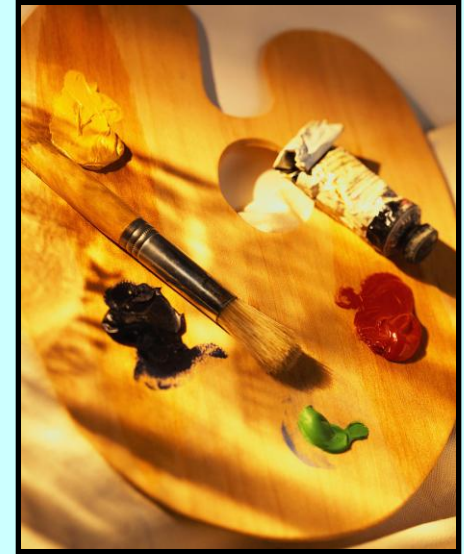


Libraries of the Future Style

- **New library- 21,505 feet**
- **Marketplace model**
- **Act as library**
- **Community center**
- **Cultural Arts center**
- **Literacy**
- **Education, information & entertainment**



Considerations



- What kind of art?
 - **Ceramics**
 - **Mural or combo above**
 - **Painting collaboration**
 - **San Diego is home to Chicano Park & many famous local Chicano Artists**
 - **Benches, sculpture garden**
 - **Donor wall**
 - **Entrance way**

Stakeholders

- **County of San Diego**
- **Friends of the Library-501(C)3**
- **Community Members**
- **Demographics**
 - Ranchers, business people &
 - farm workers
 - Major ethnic group's : Caucasians & Hispanic

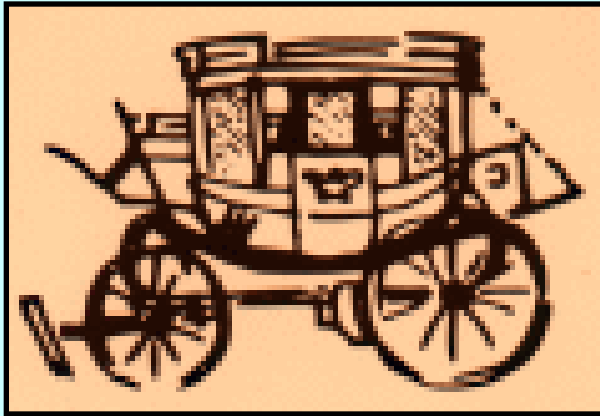


Themes

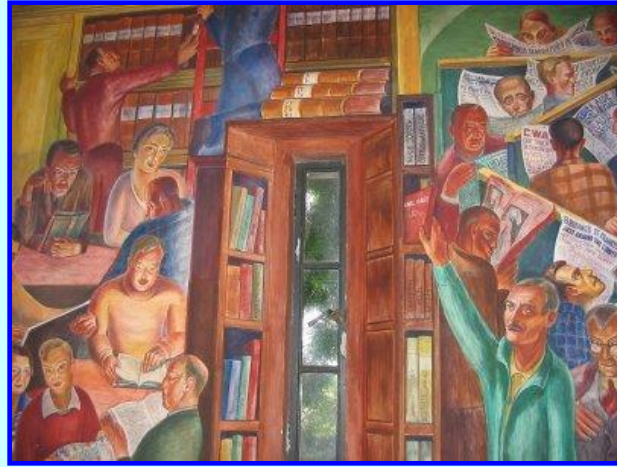
- **Spanish Theme**
- **History of town**
- **Native American Theme**
- **Landscape**
- **Wildlife**
- **Horses**



Historical Museum & RM Chamber Themes



Endurance of Public Art



©"The Library" by Bernard Zakheim

- In current building now: move art pieces to new building
- Preservation issues & continual maintenance to art work
- Wish to avoid copyright lawsuits
- Graffiti possibly an issue
- Weather & fire protection

Graffiti, Brown Outs & Copyright Violations: San Diego Community Mural before Brown Out

- © Salvador R. Torres, Muralist



Mural After Brown Out



Building Consensus & Ownership

- **Survey groups**
- **Fundraising**
- **Donors**
- **Publicity**
- **Media Contacts**
- **Events**
- **Meetings**



Creative Process

- Process of creating from ground up
- Using local children, artists & adults
 - Involving them from conception
 - Sketches
 - Design
 - Drawing and painting
 - Webpages gallery



Why **Art** in Libraries?



- **Increases cultural pride & ownership**
- **Reflects community history**
- **Expands image & use of library beyond books**
- **Stimulates creativity & intelligence**
- **Enhances literacy & improves reading and math Skills**

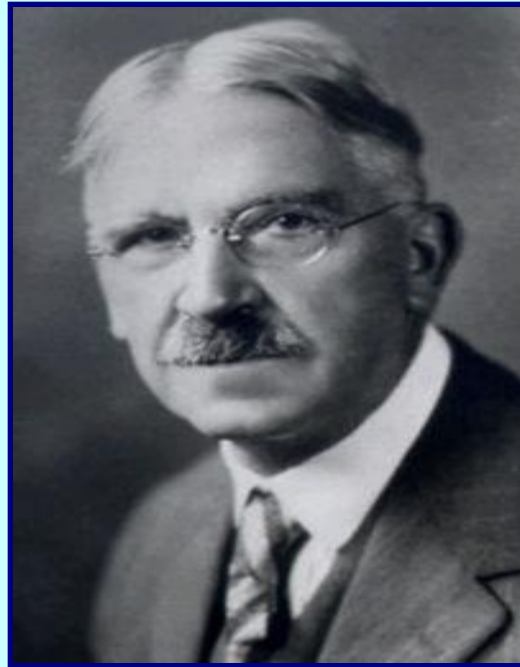
➤ See www.dana.org
article March 2008

Why Children's Rainforest

- **Create enduring collaborative artwork with community symbols**
- **Integrates the culture, nature, landscape and local color into art with unity of form**
- **Involves children from the design phase to completion**
- **Partners with other local artists**



Art as Experience by John Dewey



- **“Works of art are the most intimate and energetic means of aiding individuals to share in the arts of living. Civilization is uncivil because human beings are divided into non-communicating sects, races, nations, classes and cliques..”**