

It's All Greek To Me!

A New Member Orientation



WHY AM I HERE?

The purpose of the presentation is to provide the people attending with background knowledge about the Jaycee organization. It is a program designed for us to tell you about our group and for you to ask questions. This session is provided to inform people about the Jaycee organization as it exists today so that they can reap the benefits of what the organization has to offer. The presentation will be approximately one hour long.

This manual was assembled in response to new members' and guests' requests for information about the Jaycee organization as a whole and our chapter in particular.

WHAT ARE THE JAYCEES OR JUNIOR CHAMBER?



Description

We are a young person's (21 to 40) leadership training organization. Our programs stress the development of the individual member's leadership and managerial skills through the running of projects that benefit our community and the Jaycees movement as a whole. We build leaders!

As a member our chapter, you will also be a member of the State Jaycee organization. The state officers and program chairpeople are among our greatest resources for course instructors and general information and materials.

Structure

In addition, you are now one of more than **70,000 members of the U. S. Junior Chamber** located throughout the fifty states. Our headquarters are located in **Tulsa, Oklahoma** and you will have the opportunity to meet U.S. Junior Chamber officers throughout the year at state and local functions. You will receive a magazine from the U.S. Junior Chamber of Commerce as a benefit of membership.

Most impressively, perhaps, you are now a member of JCI (Junior Chamber International). This brotherhood encompasses more than **100 countries** (including some countries in Eastern Europe) and has its headquarters in St. Louis, Missouri.

HOW DID THE JAYCEES START?

Our founder, **Henry "HY" Gissenbier** wanted to develop the business skills and the reputation of young men. He felt that young men could make a difference in business and in the community. This approach was unusual, because during this period most young men were out of school by the age of fifteen, and their first jobs were the jobs they died in. If they were lucky, they might work their way into an executive position by the time they were in their forties. But Hy knew that twelve signers of the Declaration of Independence were under 35; Thomas Jefferson was only 33 when he wrote the original draft of the document.

Hy Gissenbier felt that in order for young people to improve their prospects for social and career advancements they would first have to **join forces socially**. The Herculaneum Dance Club became the most popular in the city. This progressive attitude, that **young men can make a difference**, became the hallmark of the Junior Chamber.

In 1914, the Herculaneum Dance Club merged with six other socially-minded groups to form the Federation of Dancing Clubs; Hy was elected president. In this capacity, he led a meeting of the Federation on October 13, 1915, at the Mission Inn in St. Louis, Missouri. It was at this gathering that 32 young men agreed to form the Young Men's Progressive Civic Association (YMPCA),

The United States Junior Chamber

developing their skills as leaders by tackling difficult civic problems.

Gissenbier wanted young men to make an impression early in life, so development of business and leadership skills was offered to members of the early movement. Those skills and other benefits are still offered today.

The official **date of birth** of The U. S. Junior Chamber of Commerce was **January 21, 1920**. Henry Gissenbier and a group of young men in **St. Louis, Missouri** established the Junior Chamber for personal reasons. They wanted to move ahead in their careers and their lives, but they faced a classic "catch-22." To advance they needed more experience, but the only way they could get more experience was to advance. They found they faced similar problems and had different solutions. That **diversity became their strength**. Coming from a variety of backgrounds, they discovered they possessed a wide range of talents, skills and abilities, with the natural leaders in the group able to find and use available resources.

With the help and guidance of established civic and business leaders, the St. Louis group determined its own needs and set about meeting those needs. To advance in their careers, members needed skills in planning, budgeting, training, communication and supervision. To gain those skills they channeled their collective efforts in a unified direction. Committees were formed. Chairmen elected. Goals set. Timetables established. Resources marshaled. Management and workers trained. Manpower took action.

WHAT IMPACT HAVE JAYCEES HAD ON COMMUNITIES ACROSS AMERICA?

The section that follows is a brief description of the emphasis areas chosen by the Jaycees nationwide, by decade.

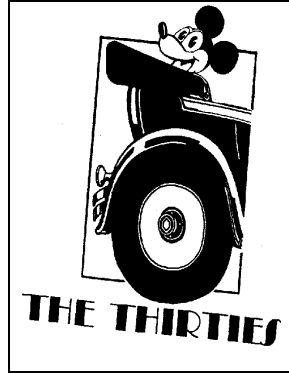


The 1920s

Get out and Vote.
Know America First.
Fire Prevention.

The first decade of Jaycees saw the organization expand community service project to

the national level. **Jaycee Charles Lindbergh** made his first solo flight.



The 1930s

National Wildlife Federation established.

Disease Awareness.

"Safety with Light." as Jaycees donated thousands of street light to communities.

Highway safety programs.

Ten Outstanding Young Men award established.

Jaycees push "50-Million Voters Campaign."

During the '30s, founder Henry Gissenbier died in St. Louis, Missouri.



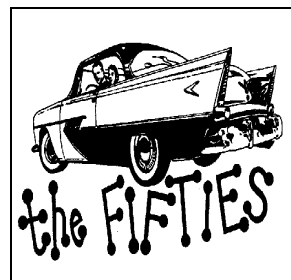
The 1940s

Junior Chamber International (JCI) formed in Mexico City.

Jaycees endorse a military draft.

Jaycee Creed adopted.

By the '40s, the importance of the Junior Chamber increased as America prepared for war. Permanent headquarters established in Tulsa, Oklahoma.



The 1950s

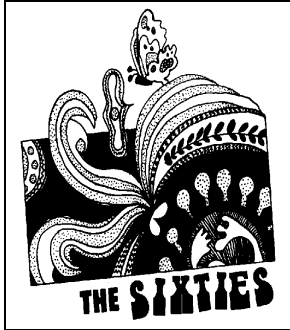
Jaycees sponsor stops on Professional Golfers' Association tour.

First Outstanding Young Farmer and Junior Tennis programs held.

War Memorial

Headquarters dedicated in Tulsa.

Jaycees continued to play an important role on the national scene in the '50s with efforts to grant **statehood to Alaska and Hawaii**.



The 1960s

First Governmental Affairs Leadership Seminar (GALS).
Uniform Vehicle Code adopted nationally.
Clean Water Program launched.
Shooting Education adopted as a national

program.
Project Concern adopted as International Relations activity.

Jaycees' impact in the '60s resulted in the first annual National Award of Distinction, from National Clean-Up Paint-Up Fix-Up Bureau.

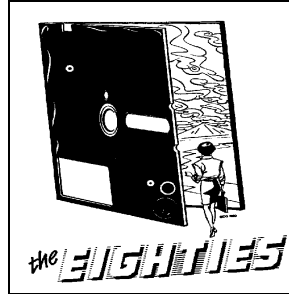


The 1970s

"Do Something" campaign sparked national interest in volunteerism.
Operation Identification program to combat burglaries.
Operation Red Ball reduced fire fatalities.
Operation Threshold, a

program dedicated to reducing alcohol abuse.

During the '70s the JCI World Headquarters moved to Coral Gables, Florida and the Exhibition Hall opened at the national headquarters in Tulsa.



The 1980s

"Sign Up America" voter registration campaign.

The US. Jaycees endorsed "Campaign for Liberty".
The Healthy American Fitness Leaders award program adopted.

Women become regular

members of the organization.

The age requirements changed to 21 through 39.



The 1990s

National **Wake Up America** voter registration program

Greenworks! environmental education
Jaycees Against Youth Smoking (**JAYS**)

The U.S. Junior Chamber of Commerce celebrates its **75th anniversary** in its birth place, St. Louis, Missouri.

The 2000s

First female National President elected
Citizen Corps program launched for Homeland Security

HOW DO THE JAYCEES PROVIDE LEADERSHIP TRAINING?

The thrust of the leadership training within the Jaycee organization is achieved through running projects. The member can take on many roles within the projects--from project chairperson to project helper.

During the 80 plus years since the beginning of the Jaycee movement, the organization has gone through many changes, both in programs and in names. The Jaycees have become **the greatest young people's leadership training organization in the world**, and during this period, have developed a "concept" of what Jaycees should be for its members.

The "concept" is a process by which the "whole chapter" can offer its members a "total experience" -- personal growth, development of their managerial skills and effective service to their community. While the theory of the "concept" is the same throughout the Jaycee organization, the specific projects which chapters run, are defined by the interests of that chapters' members.

All projects and programs run by a Jaycee chapter fall within one of five major programming Areas of Opportunity: INDIVIDUAL DEVELOPMENT, COMMUNITY DEVELOPMENT, MANAGEMENT DEVELOPMENT, INTERNATIONAL DEVELOPMENT, AND BUSINESS DEVELOPMENT. These categories and sample projects within them are as follows:

Individual Area of Opportunity:

embodying the line of the Jaycee Creed which states "Earth's great treasure lies in human personality," this area provides an opportunity for individual members to realize their personal potential through training programs.

Programming in this area would encompass all how-to programs, not related to Leadership, which falls in the Business Area of Opportunity.

Community Area of Opportunity:

embodying the line of the Jaycee Creed which states "Service to humanity is the best work of life," this area develops the sensitivity of individual members to societal problems and community dynamics by providing experience in community problem solving.

Programming in this area would encompass any project or program that either educates community members or improves the quality of life in a community.

Management Area of Opportunity:

embodying the line of the Jaycee Creed which states "Government should be of laws rather than of men," this area develops the managerial skill of the individual member at all levels of the organization.

Programming in this area would encompass any program or project that enhances a member's management skills.

Business Area of Opportunity:

embodying the line of the Jaycees Creed which states "Economic justice can best be won by free men through free enterprise," this area provides an opportunity for individual members to contribute to the development and enhancement of the economic infrastructure, prosperity, and well-being for all nations.

Programming in the area would encompass any business-oriented training or other program that contributes to the economic prosperity for members and the community.

International Area of Opportunity:

embodying the line of the Jaycee Creed, which states "The brotherhood of man transcends the sovereignty of nations," this area provides an opportunity for individual members to contribute to the development of goodwill, understanding, and cooperation among all peoples.

Programming in this area would encompass all projects and programs that enhance a member's knowledge of different cultures and countries around the world.

WE'VE COVERED THE JAYCEES IN GENERAL. TELL ME ABOUT THIS JAYCEE CHAPTER SPECIFICALLY.

History

Goals for the future:

WHAT'S IN IT FOR ME?

Upcoming projects

Our Chapter Today

IF I'M NOT ALREADY A MEMBER, WHAT DOES IT TAKE FOR ME TO JOIN?

You must be between the age of *21 and 40*. You need to fill out an application form providing us with your name, address, phone numbers, *date of birth*, and e-mail address.

You must pay annual membership dues of \$45. These dues entitle you to twelve months of membership and can be paid by check, or we can arrange a payment plan for you.

Appendix 1: Glossary of Jaycee Terms

ACS

Active Chapter Size. Average membership of all chapters within a given population division.

AMBASSADOR

The highest honor conferred by the U. S. Jaycees. This most distinguished form of recognition signifies an individual's exceptional contribution to the Jaycee movement and can be bestowed on the state or chapter level.

ANNIVERSARY DUES

A dues collection system whereby a local member's annual dues to The U.S. Junior Chamber of Commerce is due during each anniversary month of membership. The U.S. Junior Chamber collects these dues through chapters.

ANNUAL MEETING

The meeting held in September each year to conduct business of the U.S. Junior Chamber. It's at this meeting that the national president and 10 vice presidents are elected. Each chapter may send delegates to the Annual Meeting.

ARCHIVES

The U.S. Junior Chamber Archives is being developed at the national headquarters in Tulsa, Oklahoma, to preserve, record and exhibit the rich heritage and achievements of the U.S. Junior Chamber. The archives also symbolizes the future growth and continuing contributions made by the organization. This effort is being funded through the annual support program of The U.S. Jaycees Foundation by contributions from alumni groups such as The Crew and The U.S. JCI Senate, as well as Junior Chamber chapters, state organizations and individual contributions.

ARMBRUSTER COMPETITION

This quarterly competition is for Jaycees with over one year in the organization. This competition is based on 50% resume and 50% on five Jaycee fact and opinion questions in a job interview situation.

BID

An offer to host an event or meeting.

BLUE CHIP

A chapter management program designed to assist local chapters in developing the total Jaycee concept.

BROWNFIELD COMPETITION

As for Armbruster, but for Jaycees with less than one year of experience.

BYLAWS

Rules and regulations an organization employs to determine its government and procedures.

CALLING TREE

A system whereby chapter leaders call a specific number of members to update and activate them.

CHAIRPERSON

The individual charged with the responsibility for the completion of a project. The chairperson heads a committee and provides motivation and leadership for its members.

CHAPTER MANAGEMENT

The use of the chapter's resources to accomplish a predetermined objective.

CHARTER

A document indicating an organization's affiliation with The U.S. Junior Chamber or Junior Chamber International.

COMMUNITY DEVELOPMENT PROGRAMS

The programs of a chapter through which an individual member is given the opportunity of applying learned leadership and management skills in fulfilling chosen social responsibility.

CONSTITUTION

Rules and regulations an organization employs to determine its government and procedures.

CPG

Chairman's Planning Guide. A series of 15 questions used to properly plan, execute and evaluate all Jaycee programs and projects.

DD

District Director. The individual who is responsible for assisting the chapters in their district with communications and coordination to the region and state.

DEGREES OF JAYCEES

A program designed to help individual members receive the benefits of their membership; a Junior Chamber career path

outline. The program consists of three phases divided into 10 degrees.

DISTRICT

Each of the eleven regions in Georgia is further divided into two to five districts. Each district has its own Director to assist its local chapters at the region and state level through communication and guidance.

DSA

Distinguished Service Award. An award presented to a young person of Jaycee age for outstanding community service

BOARD OF DIRECTORS

The governing body of The U.S. Junior Chamber, made up of the presidents of each state organization and all voting members of the executive committee plus the executive vice president, charger with the conduct of the organization's business in accordance with its constitution and bylaws.

EXECUTIVE COMMITTEE

The national offices of The U.S. Junior Chamber of Commerce, consisting of the president, executive vice president, 10 vice presidents, chairman of the board, chaplain, legal counsel, and treasurer.

EXECUTIVE VICE PRESIDENT

This appointed officer of The U.S. Junior Chamber is in charge of The U.S. Junior Chamber national service center operations. A state executive vice president is often an employee of a state organization and is a full-time manager for the state executive board of directors.

EXHAUSTED ROOSTER

An affectionate title bestowed on a Jaycee upon retiring from the Jaycees at the age of 40.

EXTENSION

The initial organizing of a new Jaycee chapter prior to completing the affiliation process.

HONORARY MEMBER

Membership conferred upon an individual whose contribution to the organization has been so outstanding as to merit this honor.

INDIVIDUAL DEVELOPMENT PROGRAMS

The self-improvement programs of a chapter, aimed at teaching, developing, and increasing the individual member's personal and leadership skills.

INSTITUTIONAL CHAPTER

A Junior Chamber chapter that exists within a confining rehabilitative or job training facility.

JAYCEE CREED

A statement of philosophy and beliefs adopted by The U.S. Junior Chamber and JCI. The Creed was written by the late C. William Brownfield of Columbus, Ohio, in 1946. Brownfield later served as national vice president.

JAYCEE FAMILY WEEK

Thanksgiving week is recognized by Jaycees as a time to emphasize the importance of the family unit.

JAYCEE WAR MEMORIAL

The home office of the U.S. Jaycees in Tulsa, Oklahoma.

JAYCEE WEEK

The week, beginning on the third Sunday of January which marks the anniversary of the founding of the United State Jaycees in 1920. Often local chapters will host banquets during this week to honor bosses or recipients of Distinguished Service Awards.

JAYCEE YEAR

The fiscal year of the U.S. Jaycees begins on January 1st and ends on December 31st.

JAYCEES MAGAZINE

The U.S. Junior Chamber publication sent to all members.

JCI

Junior Chamber International. The worldwide Jaycees organization now operating in more than 100 countries.

JCI HEADQUARTERS

Located in St. Louis, Missouri, and headed by a salaried secretary-general, serves the world organization.

JCI SENATOR

The highest honor bestowed by Junior Chamber International, upon an individual member for their contributions to the Jaycees. A JCI Senator is a life member of JCI.

JCI WORLD CONGRESS

The Annual Meeting of Junior Chamber International held each year in November. Delegates from member nations conduct the organization's business.

LEADERSHIP ACADEMY

A chapter project designed to put experienced members' skills to work by guiding, training, and encouraging new members through their first year of membership, and to provide new members with the knowledge in the Junior Chamber.

LEADERSHIP TRAINING

A process by which the individual develops greater self-confidence, motivation, self-expression, and other traits of leadership.

LEGAL COUNSEL

An officer who is a legal adviser to the organization.

LOM

Local Organization Member. A local organization (chapter) affiliated with The U.S. Junior Chamber and JCI.

LOTS

Local Officers Training Schools. A training service offered by your state organization.

LP

Local chapter president.

M-NIGHT

Membership Night. A social gathering to allow prospective Jaycees to meet a chapter's members.

METRO

The name given to Jaycee chapters in Pop Division VII and VIII and chapters with more than 100 members in Pop Divisions I through VI.

NATIONAL STAFF OFFICER

A paid employee of The U.S. Junior Chamber, with responsibility for a designated program area and headquarters functions. Staff officers frequently travel to state meetings, prepare informational and training materials and promote involvement in the Junior Chamber.

NEWSLETTER

A publication of the chapter used to keep its members informed of Junior Chamber news and meeting information.

NOM

National Organization Member. A member nation of Junior Chamber International.

ON-TO

A slogan used in promoting attendance at State and National annual conventions.

ORIENTATION

The ongoing function of educating members about the Junior Chamber organization, its benefits and member opportunities.

OYF

Outstanding Young Farmer. A program to recognize young farmers of Jaycee age.

PARADE OF CHAPTERS

Competition among the chapters within the state in which points are earned and a ranking is established on a quarterly and annual basis.

PARADE OF STATES

Annual competition among the 50 states to be ranked according to performance during the year.

PLAN OF ACTION

The Junior Chamber chapter's goals and plan for achievement developed each year by officers and members.

POLICY

Rules of practice and procedure which supplement the constitution and bylaws.

POP DIVISION

Population Division. For purposes of competition and chapter activity guidelines, the local chapters are classified by the population division of their communities into 9 divisions. Atlanta is in Pop Division VIII.

RD

Region Director. The director of a state region whose primary purpose is to provide guidance and training to the local chapters as well as act as a conduit for information between the state organization and local chapters.

REGION

The state is divided into geographic regions to provide local leadership and guidance to the chapters in that area.

REGULAR MEMBER

A young person, age 21 through 39, whose dues are paid. A Jaycee.

RETENTION

The reference made to keeping members of the local chapter active members in the Jaycee organization.

ROBERT'S RULES OF ORDER (Revised)

A guidebook of parliamentary procedure written by General Henry A. Robert (U.S. Army) in 1874. These rules provide for the protection of the rights of the majority, the rights of the minority, the rights of individuals and the rights of those absent, in conduct of meetings.

SPEAK UP

A program designed to improve an individual's verbal communication skills.

SPRINGBOARD

An individual activation program designed to aid chapters in activating new members.

STATE BOARD MEETING

A quarterly meeting of all the chapters in the state.

TOYA

Ten Outstanding Young Americans. Each year during Annual Meeting, The U.S. Junior Chamber of Commerce honors 10 dynamic young Americans at an awards congress.

WAR MEMORIAL HEADQUARTERS

The home office building of The U.S. Junior Chamber of Commerce in Tulsa, Oklahoma.

Appendix 2: Resource List

Junior Chamber International (JCI)

16120 Chesterfield Parkway W
 Suite 250
 Chesterfield, MO 63017
 (P) 636.449.3100
 (F) 636.449.3107

The U.S. Junior Chamber of Commerce

PO Box 7
 Tulsa, OK 74102-0007
 (P) 918.584.2481
 800.JAYCEES
 (F) 918.584.4422

State Organization

Hawaii State Jaycees	
President: Eddie Kam	
Phone:	
Fax:	
Internet:	www.hawaiijaycees.org

National Vice President

Phone:	
Fax:	
Internet:	

Regional Director

Phone:	
Fax:	
Internet:	

District 6 Director

Gayle Takasaki	
Home Chapter: Rising Phoenix Jaycees	
Phone:	
Fax:	
Internet:	

Other:

Phone:	
Fax:	
Internet:	

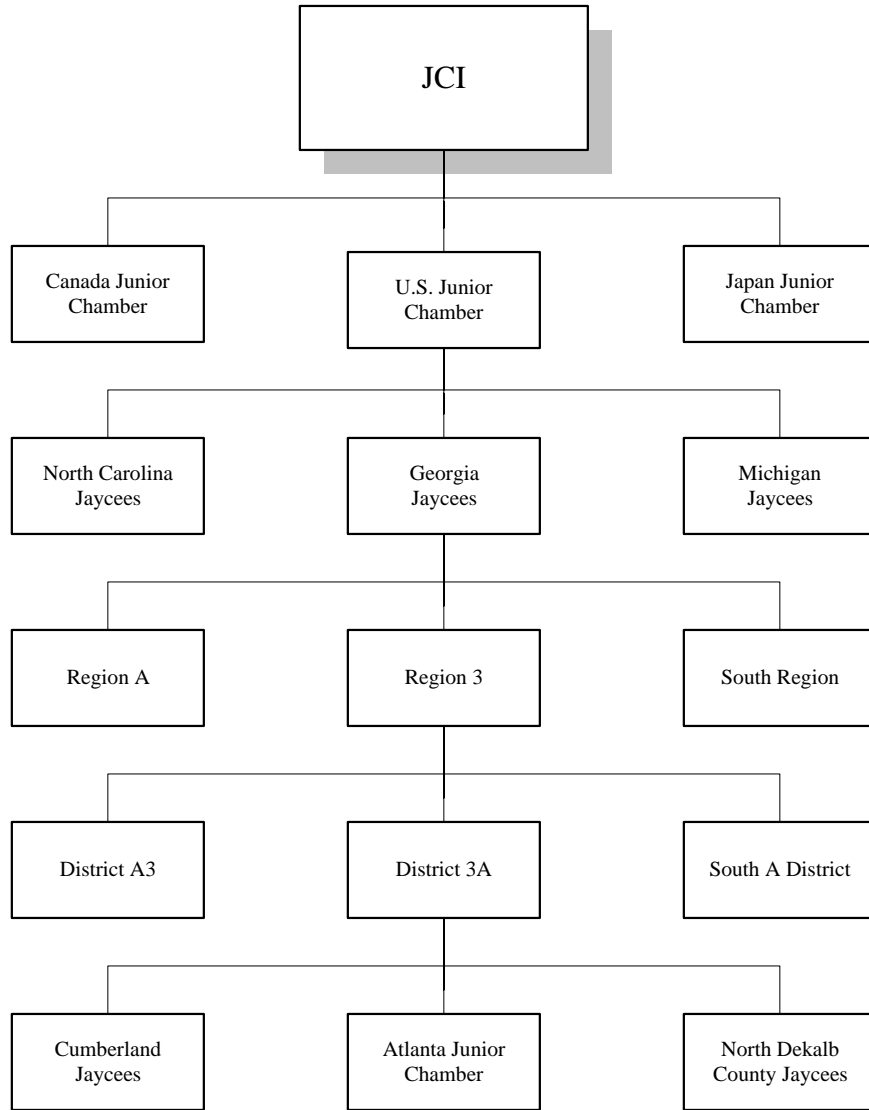
Other:

Phone:	
Fax:	
Internet:	

Other:

Phone:	
Fax:	
Internet:	

Appendix 3: Structure of the Jaycee Organization Worldwide



Appendix 4: Vision, Mission, and Creed

Vision

To Become

The organization of choice for young people, providing direction and leadership to our communities

Mission Statement

To provide young people the opportunity to develop personal and leadership skills through local community service and organizational involvement while expanding the Jaycee movement.

The Jaycee Creed

The concepts and beliefs of the Jaycee organization are embodied in the Jaycee Creed written by **C. William Brownfield**:

We believe:

- That faith in God gives meaning and purpose to human life;
- That the brotherhood of man transcends the sovereignty of nations;
- That economic justice can best be won by free men through free enterprise;
- That government should be of laws rather than of men;
- That earth's great treasure lies in human personality;
- And that service to humanity is the best work of life.