



## *Block of the Month:*

22 Blocks were turned in at the May meeting. Carol Holmes and Jannette Gordon were the lucky winners. Congratulations!

Don't forget to participate. Remember it only takes 1 to win.

## *Membership:*

We had 53 members and 12 visitors sign in for the June meeting. **WELCOME** all! Ladies, please remember to take a minute and "X" your name on the sign-in sheet each month, and note your ZIP CODE on the appropriate page. Visitors, too, please.

## *Door Prizes:*

Got name? Got name tag? Well, put that tag on (don't you want other members to know who you are?), put your name in the drawing.

The winners for June were Lois Littlejohn-Clark, Joan White, Genny Steele, Sharon Gross, Katy Sanchez, Valerie Turner, Barbara Monynihan and Lynda Naumann. Congratulations winners!

## *Snacks:*

The snacks are being supplied by our July Birthday Members and anyone else that would like to bring something.

In advance, we thank you for your hospitality, and the goodies you bring! You make our meeting special!

## *Community Service:*

Brenda Martinez is the Nurse Manager of the Neonatal Intensive Care Unit, at Riverside County Regional Medical Center, and she would be happy to accept some of our Community Service Quilts.

The month of July Trina Andrews is challenging every member to make a 24" x 24" quilt top for the Riverside County Neonatal Intensive Care Unit. Trina will supply the batting and backing, and also quilt at no charge. The Quilt tops need to be turned in at the July meeting. If you are interested in helping with the binding, please see Trina at the meeting or call her at (951) 780-5917.

## *Strip Exchange*

We had our first fabric strip exchange at the June meeting. We will continue for another 2 months - maybe even longer if our members are interested. Please be sure to bring only quilt shop quality fabrics. This is a great place to get fabric for your rail fence challenge due in October.

If this is something that you are interested in, please bring only one set of 10 - 2 1/2" strips cut from selvage to selvage, to the meeting. You will end up going home with 10 different strips.

If you have any questions, please contact Christine Sharp.

## *Show & Share*

**Liliana Davis**

**Joan White**— Baby Quilt, Toads in the puddle

**Brenda Adam**—Grandma's Quilt

**Jeannette Gordon**

**Debi Gneckow**-Photo Quilt, Memory Bears Quilt

**Dorothy McAtee**— Connor's Mouse Maze & Fossil Fern Felines

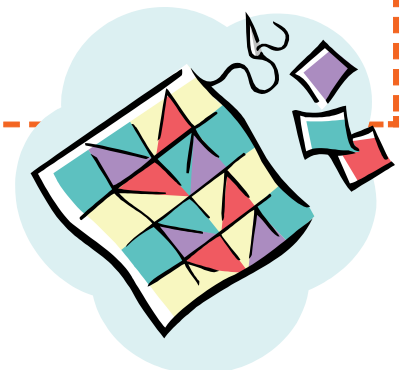
**Angie Nudge**—6 hour Quilt

**Carol Holmes** – Taby Quilt & Blooming 9 patch

**Lynn Cashman**—Placemats & Runner (Patriotic)

**Leslie Webster**—4 Quilts

**Judith Bigley**-Log Cabin



## *Tips & Tricks:*

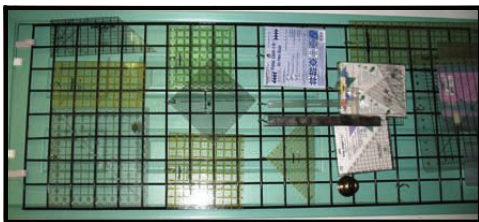
**This was sent in by Janice Iwinski, but she gives credit to Sandy Shammass.**

You mentioned a ruler dilemma--Sandy has hung her rulers on the inside of the closet door in her sewing room. She used, I believe, some rather cool hooks made by 3M, which Wal-Mart carries in their hardware department. They are the type of hook that hangs on a removable piece of double sided tape, and can be arranged any way you want. This way, the rulers are organized and will not warp or get broken, and you know exactly where they are. The smaller ones without holes can go in a mesh bag and hang the same way.

Well I have to tell you, I (Karen) found a metal wire thing (looks like a trellis with 3x3 squares). It is 2' W by 5' tall. Possibly used in a clothing store to hang garments on. I put over the door hangers on the front of my closet door to hang it and then used "S" hooks to attach the rulers. With the 3" squares I can move them around and make room for other rulers as I need. I have actually had this on the back of my door for a year or so but kept forgetting it was there because I rarely close the door when I am in the room. So, I moved to the outside of my closet door so it is visible, now I use it. I actually found two of these and the other one I am going to put on the back of the door and with large binder clips and "S" hooks hang my cutting mats.

I am looking for some ideas that would probably solve someone else's problem. Does anyone have some sewing shortcuts that they would like to share? Maybe an idea for a sewing table besides the expensive ones made for a sewing machine? How large is it? Does anyone have a sewing question that I can post and maybe someone will have an answer?

Karen Hundley  
[kbarrett-hundley@sbcglobal.net](mailto:kbarrett-hundley@sbcglobal.net)



**Tips & Tricks**  
**"Example"**

## *Happy Birthday*

Linda Adams  
 Dawn Siglar  
 Katy Sanchez  
 Judy Bello  
 Lori Miser  
 Denice Marquez  
 Lynette Williams  
 Shirley Lilly  
 Lynda Naumann



### ***Join in the fun:***

Sew Night is the 1st Tuesday of the month at Fellowship Baptist Church on Arlington Avenue just west of the 91 freeway, 6—9 p.m. Everyone (even non-members) is invited. Bring any project and a dish of food to share (if you like). We sew a little, visit, laugh and eat a lot.

### ***NEXT MEETING:***

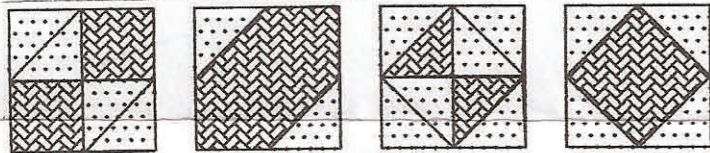
**July 17th 6:30pm. Doors open at 6pm**  
**Janet Goeske Senior Center**  
**5257 Sierra St., Riverside**  
**Membership \$25.00 per year.**  
**Non-members \$3.00 per meeting.**

# RAINCROSS QUILT GUILD—AUGUST, 2007 BLOCK OF THE MONTH

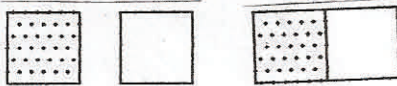
OH SUSANNAH—12 1/2" UNFINISHED—12" FINISHED—SCRAPPY

FABRIC: COLOR 1 - DARK                      1 - 6 1/2" SQUARE  
 COLOR 2 - MEDIUM                      8 - 3 1/2" SQUARES  
 COLOR 3 - LIGHT                      8 - 3 1/2" SQUARES

Draw a diagonal line on the wrong sides of 4 of the Color 2 - 3 1/2" squares. Place on the upper left corner of the Color 1 - 6 1/2" square. Sew on the line, trim, and press to the corner. Repeat on the other corners. (Forms a square in a square unit—A)

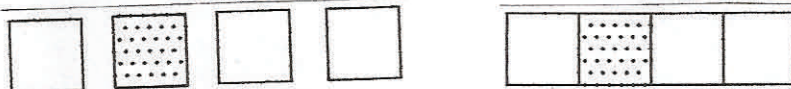


Sew a Color 2 and a Color 3 together. Repeat for a total of two of these units. (B)

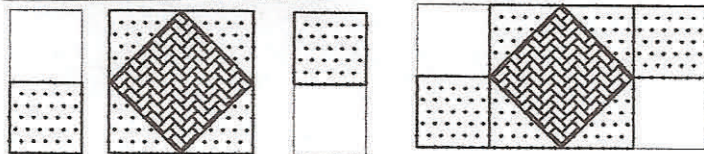


## ASSEMBLE BLOCK:

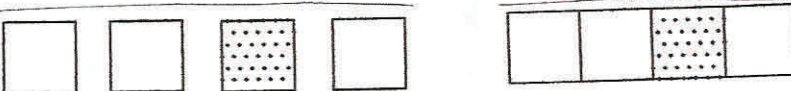
Row 1: Color 3, Color 2, Color 3, and Color 3 - (light, medium, light, and light)



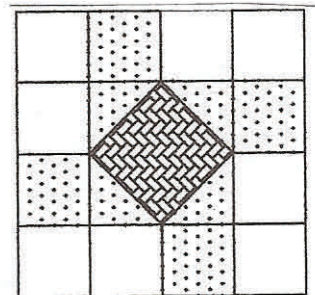
Row 2: Unit B-light on top, unit A, and unit B, light on bottom



Row 3: Color 3, Color 3, Color 2, and Color 3 - (light, light, medium, and light)



Sew rows together.



QUESTIONS—CALL JAN COX AT (951) 687-3266

EXTRA PATTERNS ARE AVAILABLE AT THE SEWING SHACK-  
 7000 INDIANA AVE., RIVERSIDE, CA  
 (951) 680-1739

## Member Class

The August 18th class will be held at the Janet Goeske Center at 10am. We will be setting up at 9am so that we can start promptly at 10am. We will be having two members teaching. Carol Holmes will be teaching the purse class, and Barbara Moynihan will be teaching the basket making technique.

Here is the supply list for the purse class taught by Carol Holmes.

2 or more fat quarters  
 2/3 yd lining material  
 2/3 yd batting  
 Button or Velcro for closure  
 Scissors and pins

Optional:  
 Store bought handles or you can make handles from material

## Quilt Challenge

Our next Guild activity will be to make a rail fence quilt. There are so many possibilities with this simple pattern, please branch out and express some creativity with this project. Use any fabrics you want. There is a minimum size of 18" x 24", but it can be as large as you want. We will share them at the guild meeting in October.

If you have any questions, please contact Christine Sharp.



*Shop our advertisers!*



## Sewing Shack



*"A Fun Place to Hang Out!"*



Authorized Dealer for **Baby Lock** and **Elna** Sewing Machines \*  
 Quality Fabrics \* Threads \* Notions \* Machine Embroidery  
 Supplies \* Quilting Supplies \* Classes

7000 Indiana Ave. Phone: 951-680-1SEW (951-680-1739)  
 Suite 103 Fax: 951-680-1659  
 Riverside, CA. 92506 E-mail: [sewingshack@sewingshack.com](mailto:sewingshack@sewingshack.com)  
 Margie Snow - Owner



Affordable Quilting Services  
 by Melissa  
 A full time long arm service  
 All work done on a  
 stitch-reg. APQS Millennium  
 (951) 371-4349