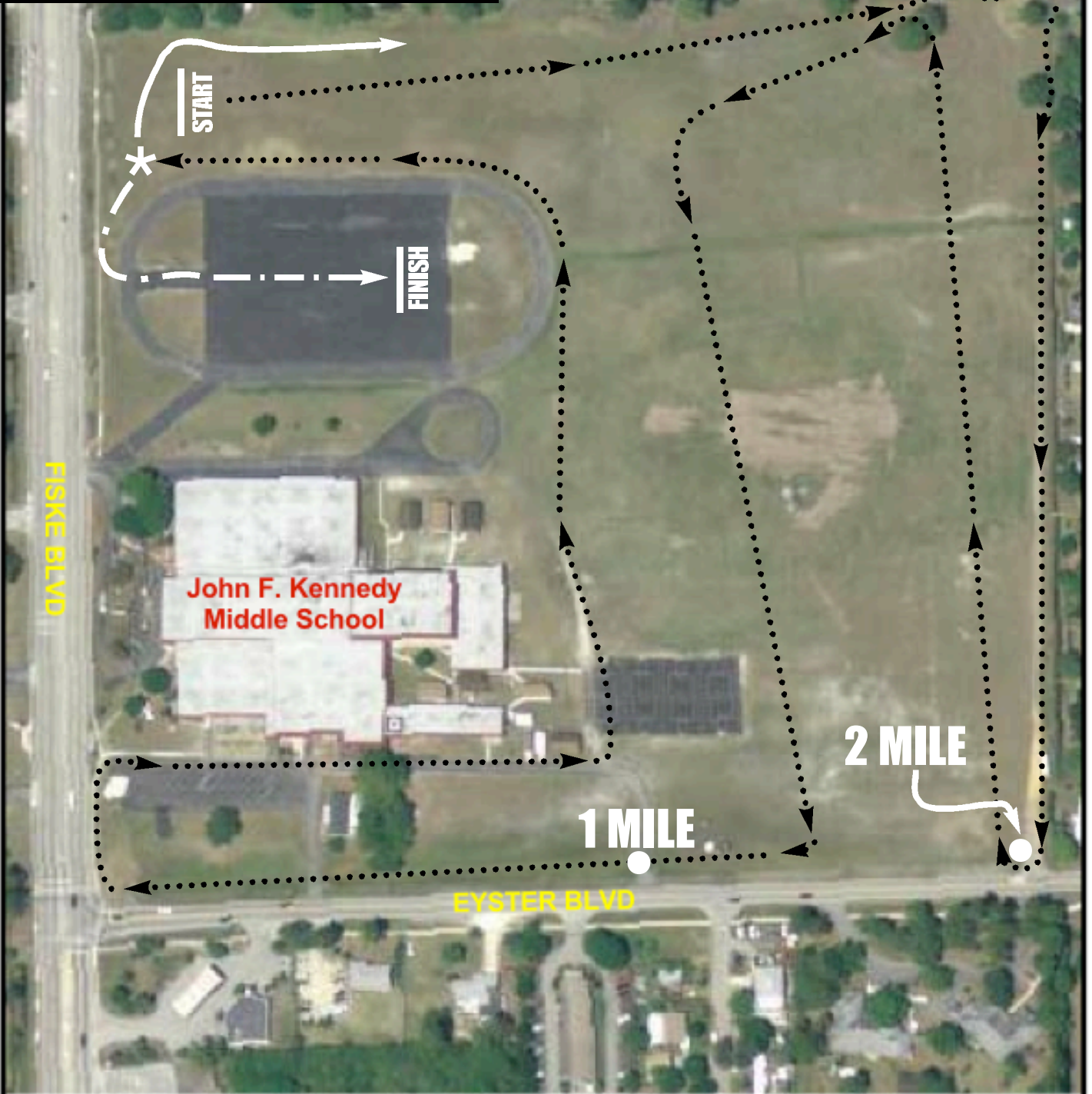
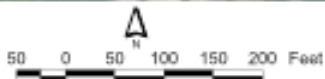


COURSE MAP INSTRUCTIONS

Athletes will run the course twice. The first time they reach the * they will run behind the start and run the course again. The second time they will turn left and finish in the middle of the track.



JOHN F. KENNEDY
MIDDLE SCHOOL



Map Created By:
MASQUI MCBEAN
99/07/2005

ROCKLEDGE,
FLORIDA