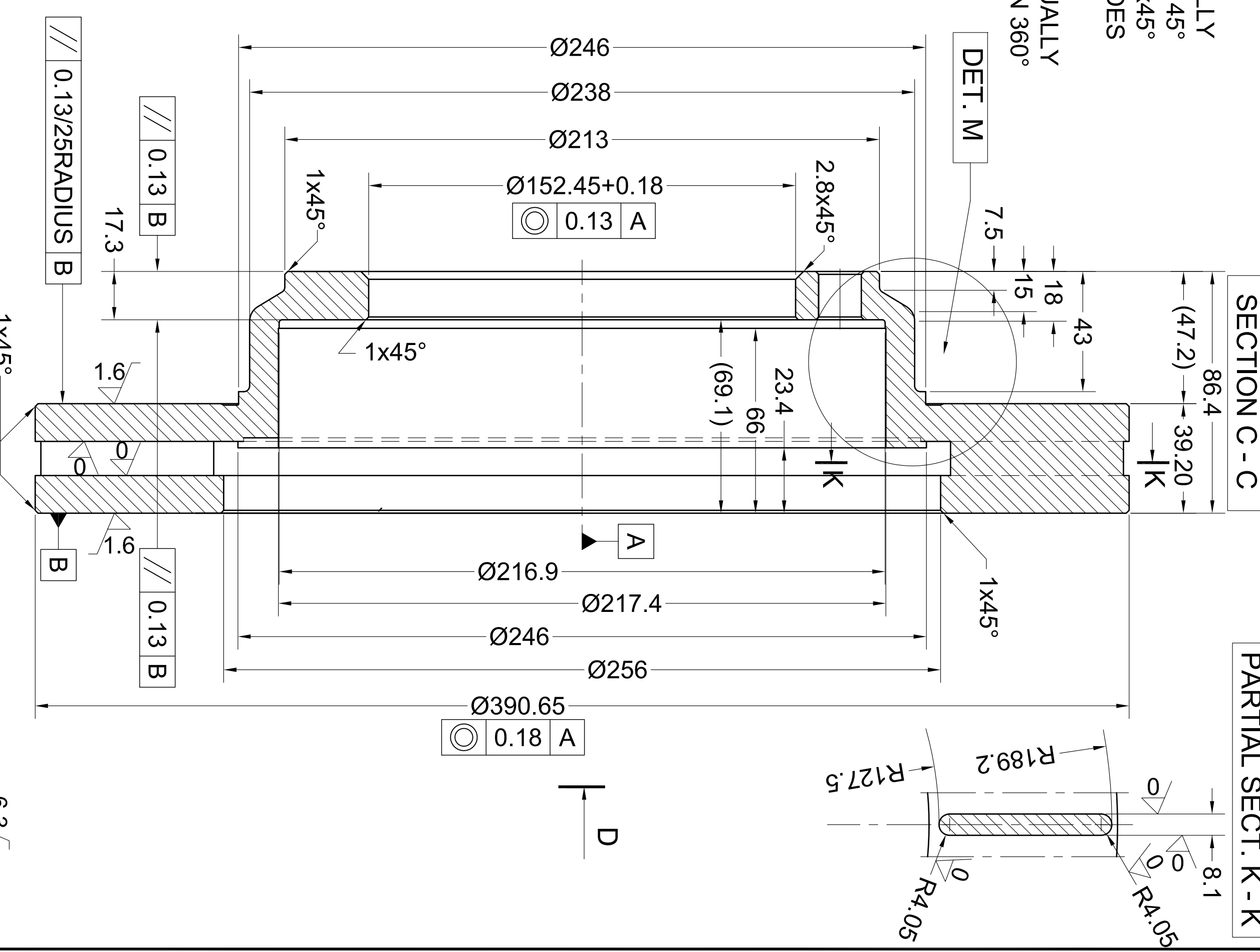


10 HOLES Ø15+0.3 EQUALLY DISTANCED AT 45° CHAMFERED.04x45° BOTH SIDES

35 RIBS EQUALLY SPACED ON 360°

100 TEETH EQUALLY SPACED ON 360° (CAST IN ABS EXCITER)



- 1.Braking surface run out within 0.13mm on 254 mm diameter
- 2.Braking surface flatness within 0.05mm on 25sq.mm
- 3.Braking surfaces parallel with each other within 0.13 on 25mm radius
- 4.Roughness average Ra in micrometers; unless specified, Ra = 6.3
- 5.All dimensions at point of intersection
- 6.Cast surface - 0 or ∇
- 7.Unless otherwise specified, all cast surface edges have fillet R1mm
- 8.Unless otherwise specified, all machined radius are R1mm

Mark " QXB55906 MIN.THK. 36.1 MM " on the outside cylindrical surface Ø390.6

6.3

PROPRIETARY AND CONFIDENTIAL

The information contained in this drawing is the property of QXB Engineering. Any reproduction in part or as a whole without the written permission of QXB Engineering is prohibited.

QXB Engineering™

DIMENSIONS		TOLERANCES	
MM	INCH	MM	INCH
XXX.XXX	±0.25	XXX.XXX	±0.009
XXX.XX	±0.10	XXX.XX	±0.010
XXX.X	±0.05	XXX.X	±0.020
XXX	±0.02	XXX	±0.004

Dwg No. QXB55906
 Material: SAE J431 G3000
 Weight: 19.8 kg
 Title: ROTOR
 Scale: A/P
 Sheet no. Assembly T/Mo.

SECTION F - F

MORE DIMENSIONS ON PAGE 2 - DET M & N (5:1)

SECTION C - C

PARTIAL SECT. K - K

VIEW D

DET. N

DET. M

Ø184.15

Ø246

Ø238

Ø213

Ø152.45+0.18

0.13 A

Ø216.9

Ø217.4

Ø246

Ø256

Ø390.65

0.18 A

D

8.1

R189.2

R127.5

R4.05

0

0

0

0

0

0

0

0

0

0

0

0

0

0

0

0

0

0

0

0

0

0

0

0

0

0

0

0

0

0

0

0

0

0

0

0

0

0

0

0

0

0

0

0

0

0

0

0

0

0

0

0

0

0

0

0

0

0

0

0

0

0

0

0

0

0

0

0

0

0

0

0

0

0

0

0

0

0

0

0

0

0

0

0

0

0

0

0

0

0

0

0

0

0

0

0

0

0

0

0

0

0

0

0

0

0

0

0

0

0

0

0

0

0

0

0

0

0

0

0

0

0

0

0

0

0

0

0

0

0

0

0

0

0

0

0

0

0

0

0

0

0

0

0

0

0

0

0

0

0

0

0

0

0

0

0

0

0

0

0

0

0

0

0

0

0

0

0

0

0

0

0

0

0

0

0

0

0

0

0

0

0

0

0

0

0

0

0

0

0

0

0

0

0

0

0

0

0

0

0

0

0

0

0

0

0

0

0

0

0

0

0

0

0

0

0

0

0

0

0

0

0

0

0

0

0

0

0

0

0

0

0

0

0

0

0

0

0

0

0

0

0

0

0

0

0

0

0

0

0

0

0

0

0

0

0

0

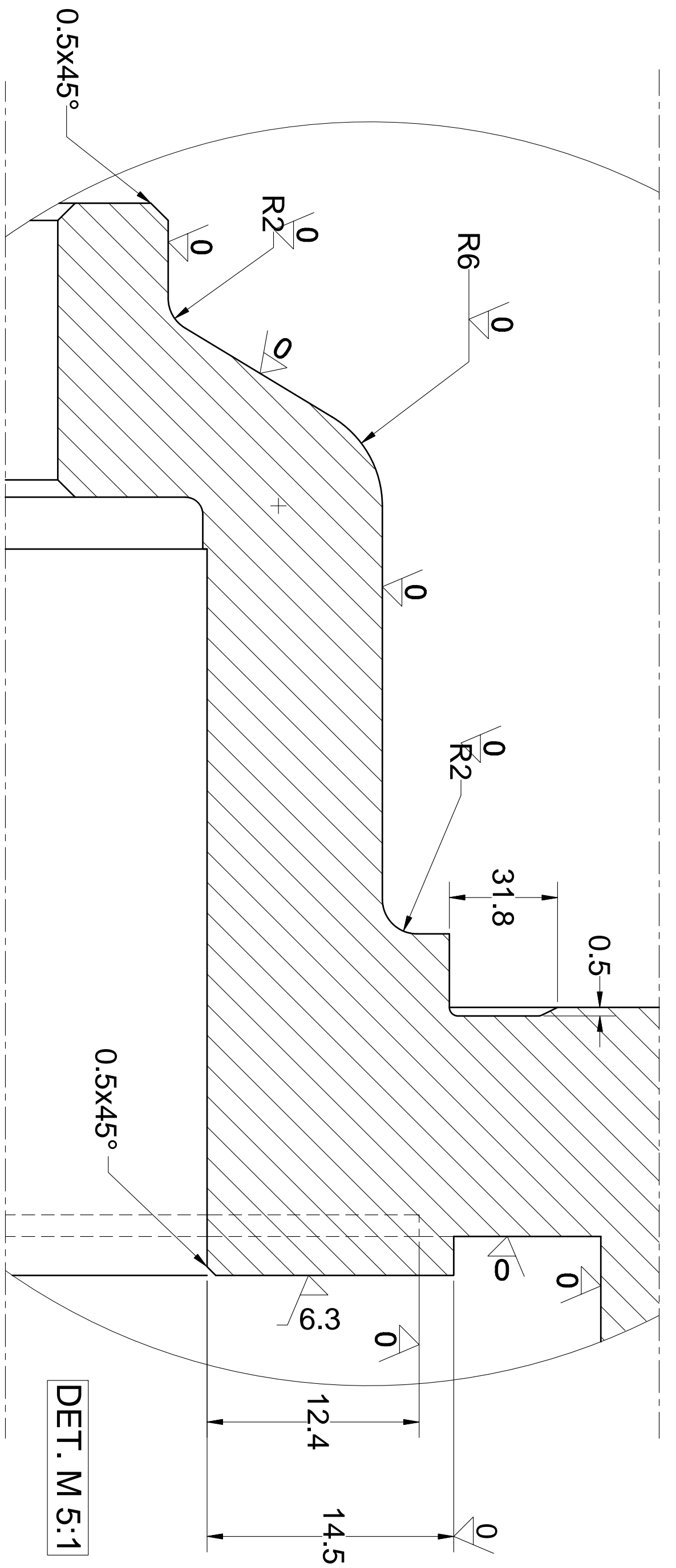
0

0

0

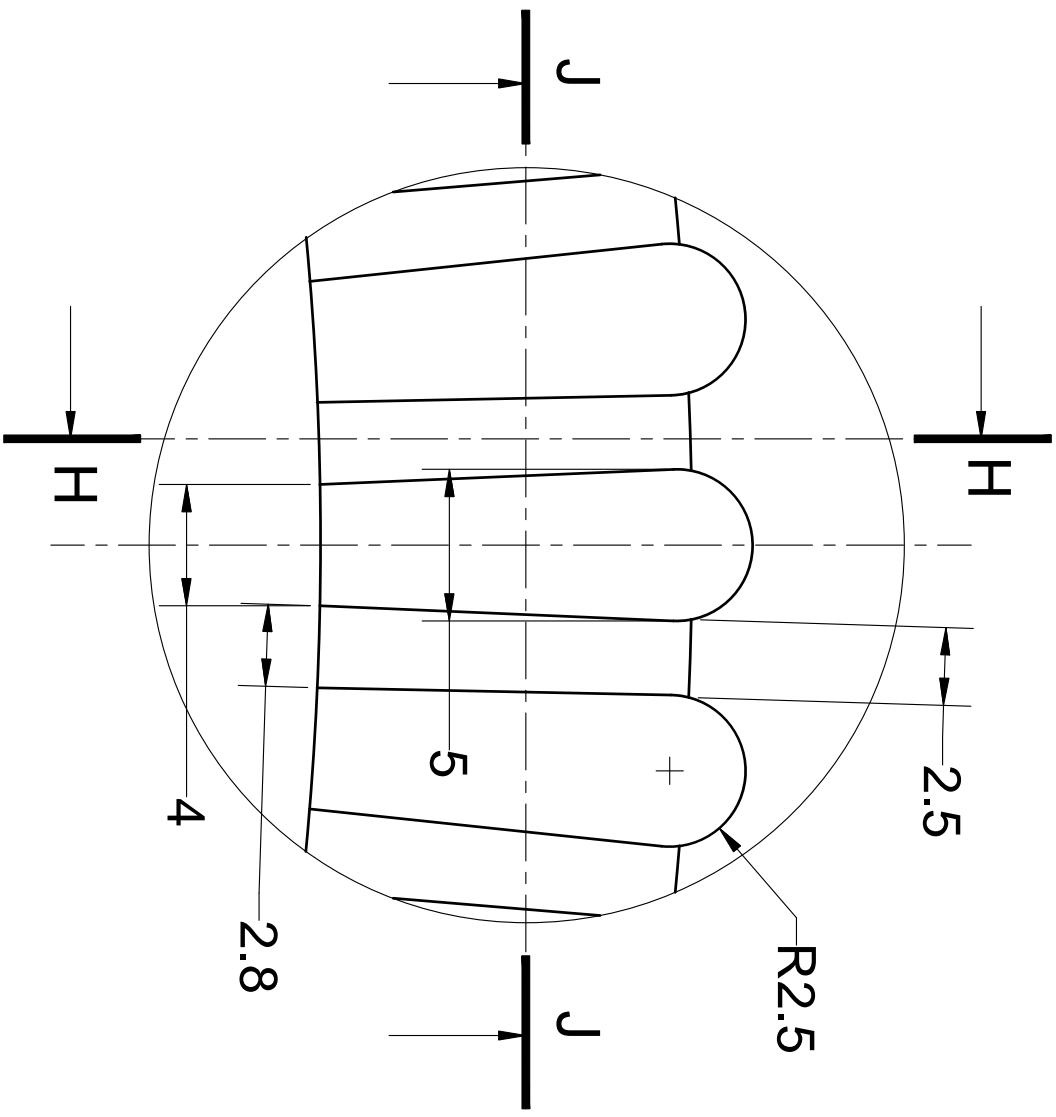
0

0

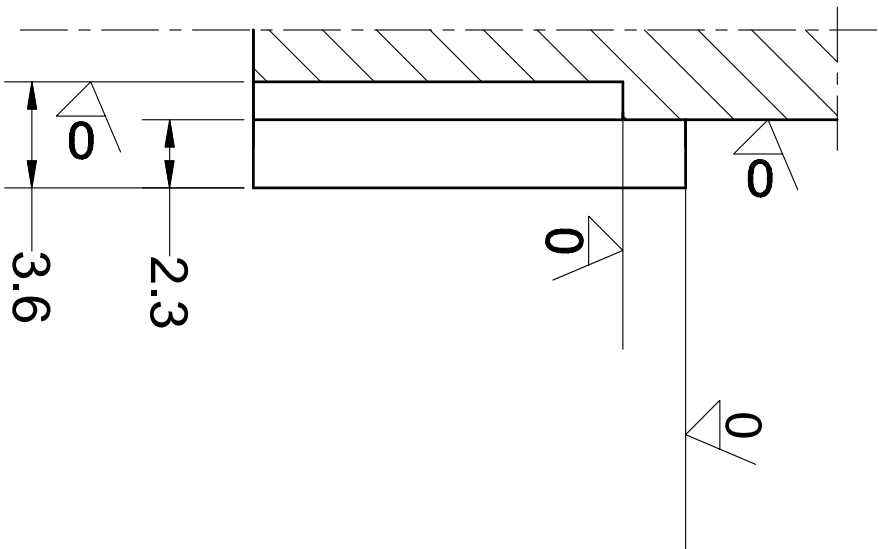


DET. M 5:1

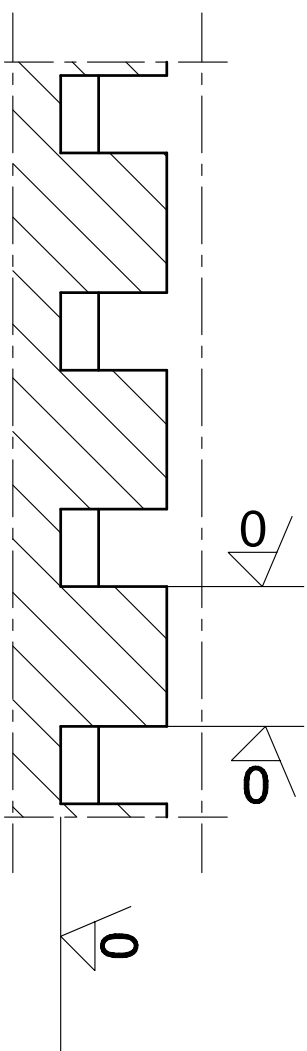
6.3



DET. N 5:1



SECT. H-H



SECT. J-J

CAST IN ABS EXCITORS

MILIMETERS		INCHES	
DIM.	TOL.	DIM.	TOL.
XXX.XXX	±0.10	XXX.XXX	±0.005
XXX.XX	±0.25	XXX.XX	±0.010
XXX.X	±0.10	XXX.X	±0.020
XXX	±1.00	XXX	±0.040
DIMENSION	MM	INCH	
CAD	A.P.		
CAM	A.P.		

QXB Engineering™

Title: QXB55906-DETAIL M&N

Dwg No.

Material:

Weight:

Scale:

Size: C

Sheet no.

Assembly T/No.

NO	MODIFICATION	DATE	NAME
1			
2			