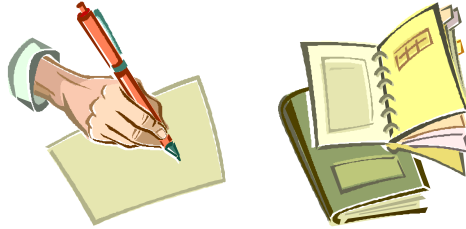


SAMPLE SAT QUESTIONS (page 50)

277. What percent of $\frac{1}{2}$ is $\frac{3}{4}$?

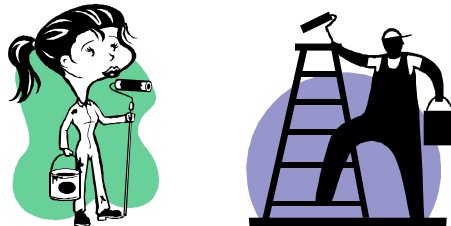
278. If pens cost \$2.00 each and notebooks cost \$4.00 each, represent in dollars the cost of p pens and n notebooks.



279. A 5 foot stick is cut so that one part is $\frac{2}{3}$ of the other. How long in inches is the longer segment?

280. The average (arithmetic mean) of 5, 14, and x is 14. What is the value of x ?

281. Harold paints $\frac{1}{4}$ of the house, and Jennifer paints $\frac{1}{8}$ of the remainder. What fraction of the house is not painted?



282. Sam, Calib and Sarah made 90 valentines grams. Sam made twice as many as Calib, and Sarah made 3 times as many as Sam. How many valentines did each make?



SAMPLE SAT QUESTIONS (page 51)

283. Mr. Heino paid \$13.20 for a book after receiving a discount of 20 percent of the list price. What was the list price?

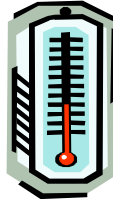


284. If $x^2 + x = 42$, then $x^2 - x = ?$

285. If a class has 24 boys and 36 girls, what percent of the class are boys?

286. Let the function f be defined by $f(x) = 3x + 4$. What is the value of $f(w - 5)$?

287. What is the average temperature reading for a 5 day period when the daily temperature readings were 12, -6, 5, -8, and 15 ?



288. How many miles can a motorist travel from 2:05 PM to 2:50 PM at an average rate of 40 miles per hour?

