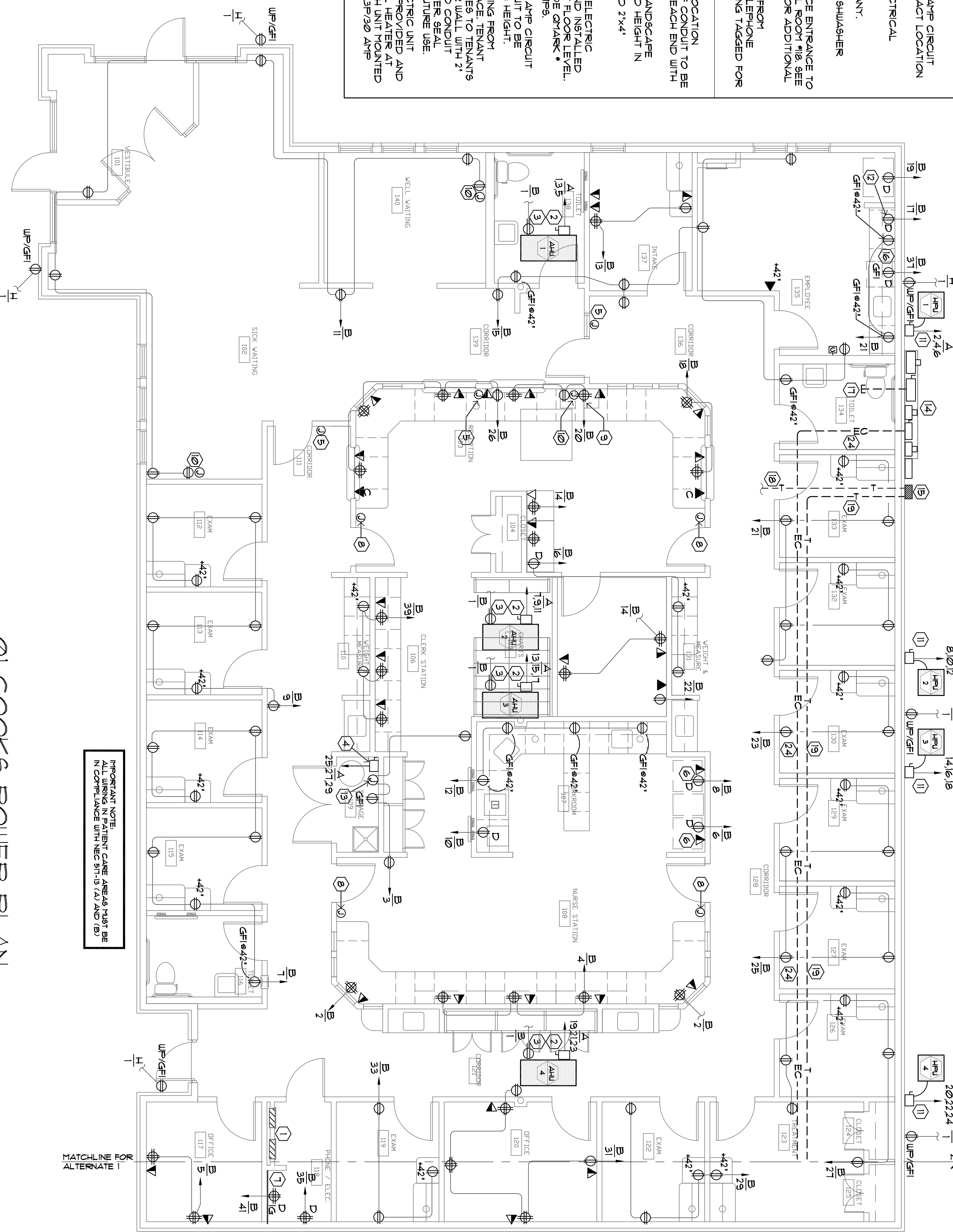


NOTES BY SYMBOL

- ① LOCATION OF NEW ELECTRICAL PANELS SHALL BE FINISHED OUT AND ALL RECESSED ELECTRICAL PANELS SHALL BE FINISHED OUT. ALL CIRCUITS SHALL BE CLEARLY AND PERMANENTLY LABELED. IF EXPOSED TO VIEW OF CLINIC, PANELS SHALL BE PAINTED TO MATCH WALLS, WHERE PERMITTED BY CODE. SEE ELECTRICAL SERVICE RISER AND PANEL SCHEDULES FOR ADDITIONAL INFORMATION.
- ② DISCONNECT ABOVE CEILING FOR AIR HANDLING UNIT. SEE ELECTRICAL SERVICE RISER AND PANEL SCHEDULES FOR ADDITIONAL INFORMATION.
- ③ PROVIDE 120V, P/20 AMP RECEPTACLE MOUNTED TO STRUCTURE ABOVE AT MECHANICAL PLATFORM FOR EQUIPMENT MAINTENANCE.
- ④ 120V, 3P/20 AMP NEMA 1 DISCONNECT FOR WATER HEATER CONNECTION. VERIFY MOUNTING HEIGHT.
- ⑤ PROVIDE ALL ELECTRICAL SERVICE FOR DOOR BEL ALARMS AND BELAYS TO JUNCTION BOXES AS INDICATED FOR REMOVE HEATER FROM INCOMING PATIENTS). COORDINATE WORKERS FIELD REPRESENTATIVE.
- ⑥ REFRIGERATOR REFRIGERATION SYSTEMS SHALL BE ROUTED THROUGH ALARM SYSTEM. COORDINATE LOCATION AND TYPE OF ALARM SYSTEM WORKERS FIELD REPRESENTATIVE.
- ⑦ INSTALL 3/4" RAYBOND BOARD PAINTED TO MATCH WALL FOR TELEPHONE BOARDS. INSTALL 1 DEDICATED ISOLATED GROUND OUTLET ON THE TELEPHONE BOARD. PROVIDE TWO 3" CONDUITS THROUGH THE GYPSUM BOARD CEILING. ELECTRICAL CONTRACTOR SHALL PROVIDE SURFACE MOUNTED GROUNDING CONNECTION LUGS WITH #6 CU BARE COPPER GROUND EXTEND TO MAIN SERVICE GROUND.
- ⑧ PROVIDE JUNCTION BOX AT 60" (CENTER ABOVE LIGHT SWITCH) WITH COVER PLATE. INSTALL 1" CONDUIT WITH WALL, WITH FULL STRING CEILING SPACE FOR CONNECTION OF 4-5 STATION CALL LIGHT BY INTERCOPT, INC. CONFIRM REQUIREMENTS OF FINAL LIGHT SYSTEM INSTALLATION WITH PARK DUNCAN (682) 889-1891.
- ⑨ LOCATION OF DVD PLAYER COORDINATE WITH OWNERS FIELD REPRESENTATIVE.
- ⑩ PROVIDE 120V, 20 AMP RECEPTACLE FLUSH MOUNTED IN WALL. PROVIDE FLUSH MOUNT FAX JUNCTION BOX WITH WHITE COVER FOR RECEPTACLE. EXTEND 3/4" CONDUIT UP THROUGH WALL TO FINISH 6" ABOVE FINISHED CEILING MOUNT AT 96" AFF TO CENTER REPRESENTATIVE.
- ⑪ WALL MOUNTED DISCONNECT FOR SERVICE RISER FOR ADDITIONAL INFORMATION. SEE ELECTRICAL SERVICE RISER FOR MICROVALE 120V, P/20 AMP RECEPTACLE IN UPPER CABINET FOR MICROWAVE CONNECTION. VERIFY EXACT HEIGHT IN FIELD.
- ⑫ PROVIDE JUNCTION BOX AND ASSOCIATED 120V, P/20 AMP CIRCUIT FOR HOT WATER RECIRC PUMP CONNECTION. VERIFY EXACT LOCATION AND HEIGHT IN FIELD.
- ⑬ ELECTRICAL SERVICE ENTRANCE EQUIPMENT. SEE ELECTRICAL SERVICE RISER FOR ADDITIONAL INFORMATION.
- ⑭ TELEPHONE DEWARK LOCATION BY TELEPHONE COMPANY.
- ⑮ 120V, P/20 AMP RECEPTACLE IN BASE CABINET FOR DISHWASHER CONNECTION. VERIFY EXACT HEIGHT IN FIELD.
- ⑯ EXTEND (1) 2" CONDUIT AND CONDUCTORS FROM SERVICE ENTRANCE TO ELECTRIC SERVICE PANEL. A 1" ELECTRICAL RIGGING ROOM #18, SEE INFORMATION.
- ⑰ PROVIDE 1/2" CONDUIT FOR TELEPHONE CONDUCTORS FROM TELEPHONE COMPANY DEWARK TO MECHANICAL OFFICE TELEPHONE BOARD IN ELECTRICAL ROOM # 18. PROVIDE FULL STRING TAGGED FOR INTENDED USE.
- ⑱ ALTERNATE 1: 1" CONDUIT FROM TELEPHONE DEWARK LOCATION TO BE INSTALLED IN FINISHED FIELD. PROVIDE FULL STRING TAGGED BY FUTURE TENANT. PROVIDE PULL STRING TAGGED AT EACH END WITH INTENDED USE.
- ⑳ ALTERNATE 1: 120V, P/20 AMP GFI RECEPTACLE FOR LANDSCAPE SPRINKLER CONTROLLER. VERIFY EXACT LOCATION AND HEIGHT IN FIELD. RECESSED JUNCTION BOX FOR HEATER CONNECTION.
- ㉑ ALTERNATE 1: 1" CHLARK CORAB217, 15 KW, FORCED AIR ELECTRICAL SURFACE MOUNTED WALL HEATER TO BE PROVIDED AND INSTALLED BY THE ELECTRICAL CONTRACTOR. INSTALL HEATER AT FLOOR LEVEL. HEATER SHALL BE INSTALLED IN FINISHED FIELD. HEATER SHALL BE CRASH SURFACE MOUNT HOUSING 120V/1 PHASE, 125 AMP/3.
- ㉒ ALTERNATE 1: PROVIDE JUNCTION BOX AND 120V, P/20 AMP CIRCUIT CONNECTION FROM SERVICE ENTRANCE TO FINISHED FIELD. PROVIDE CONTINUOUS WITH LOCK ON BREAKER. VERIFY MOUNTING HEIGHT.
- ㉓ ALTERNATE 1: PROVIDE 2" BPT CONDUIT WITH PULL STRING FROM ELECTRICAL SERVICE ENTRANCE TO FINISHED FIELD. SERVICE TRAY SHALL EXTEND CONDUIT FROM INSIDE DEWARK PREMISES TO TENANT'S ELECTRICAL PANEL. CONDUIT TO PENETRATE EXTERIOR WALL WITH 2" HEADED NIPPLE FOR FUTURE CONNECTION OF 1B AND CONDUIT EXTENSION TO TENANT'S SERVICE DISCONNECT AND FUTURE SEAL AROUND WALL PENETRATION AND CAP CONDUIT FOR FUTURE USE.
- ㉔ ALTERNATE 1: 1" CHLARK CORAB217, 15 KW, 350 CFM ELECTRICAL UNIT HEATER SUPPLEMENTED FROM STRUCTURE ABOVE TO BE PROVIDED AND INSTALLED BY THE ELECTRICAL CONTRACTOR. PROVIDE FULL STRING TAGGED 120V, P/20 AMP WITH 5/8" HEADED RODS. PROVIDE WITH UNIT MOUNTED 7'9.1" AFF WITH 3 PHASE, 24 AMP/3. PROVIDE WITH 200V, 3P/20 AMP NEMA 1 NON FUSED DISCONNECT AT UNIT HEATER.

ELECTRICAL SYMBOLS	
⊕	RECEPTACLE/DUPLEX, 18" AFF (OR AS INDICATED)
⊕	RECEPTACLE QUAD, 18" AFF
⊕	TIME CLOCK
⊕	DEDICATED RECEPTACLE
⊕	WEATHERPROOF DEVICE
⊕	GROUND FAULT INTERRUPT DEVICE
⊕	ISOLATED GROUND DEVICE
⊕	SWITCH, 3-WAY, 45" AFF TO CTR
⊕	SWITCH, SINGLE POLE, 45" AFF TO CTR
⊕	LOCATION OF CREDIT CARD READER OUTLET AT 18" AFF WITH 3/4" CONDUIT STUBBED 6" ABOVE CEILING WITH FULL STRING.
⊕	LOCATION OF WALL TELEPHONE OUTLET AT 45" AFF WITH 3/4" CONDUIT STUBBED 6" ABOVE CEILING WITH FULL STRING.
⊕	LOCATION OF FAX OUTLET AT 18" AFF WITH 3/4" CONDUIT STUBBED 6" ABOVE CEILING WITH FULL STRING.
⊕	LOCATION OF COMBINATION TELEPHONE/DATA OUTLET AT 18" AFF WITH 3/4" CONDUIT STUBBED 6" ABOVE CEILING WITH FULL TAPE.
⊕	SINGLE GANG JUNCTION BOX WITH BLANK COVER AT 18" AFF WITH 3/4" CONDUIT STUBBED UP ABOVE CEILING, PROVIDE FULL STRING UNLESS NOTED OTHERWISE.
⊕	DISCONNECT SWITCH
⊕	ELECTRICAL PANEL



01 COOKS POWER PLAN

02 ALTERNATE 1 POWER PLAN

FOR BIDDING PURPOSES ONLY

<p>E2</p> <p>DATE OF ORIGINAL ISSUE March 16, 2009</p>	<p>POWER PLAN AND NOTES</p> <p>SHEET NUMBER</p>	<p>JOB NUMBER 09.016</p>	<p>SHEET TITLE</p> <p>COOK CHILDREN'S PRIMARY CARE CLINIC BURLESON, TX</p>	<p><i>linear!</i></p> <p>the architecture of Kemery Brundige and Young</p> <p>8600 Freepark pky, Ste. 310 Irving, TX 75063 Phone: 972.929.9226 Fax: 972.929.9061 inbox@linear-architecture.com</p>	<p>ARCHITECT: Philip Kemery DATE: 04-30-09</p> <p>NOT FOR REGULATORY APPROVAL, PERMITTING, OR CONSTRUCTION.</p>	<p>OWNER REVISIONS</p> <p>DATE REVISIONS</p>	<p>CONTRACTOR SHALL VERIFY ALL DIMENSIONS AT THE SITE AND NOTIFY THE ARCHITECTS OF ANY DIMENSIONAL ERRORS, OMISSIONS OR DISCREPANCIES BEFORE BEGINNING OR FABRICATING ANY WORK.</p> <p>DO NOT SCALE DRAWINGS</p>
---	--	-------------------------------------	---	--	---	--	--