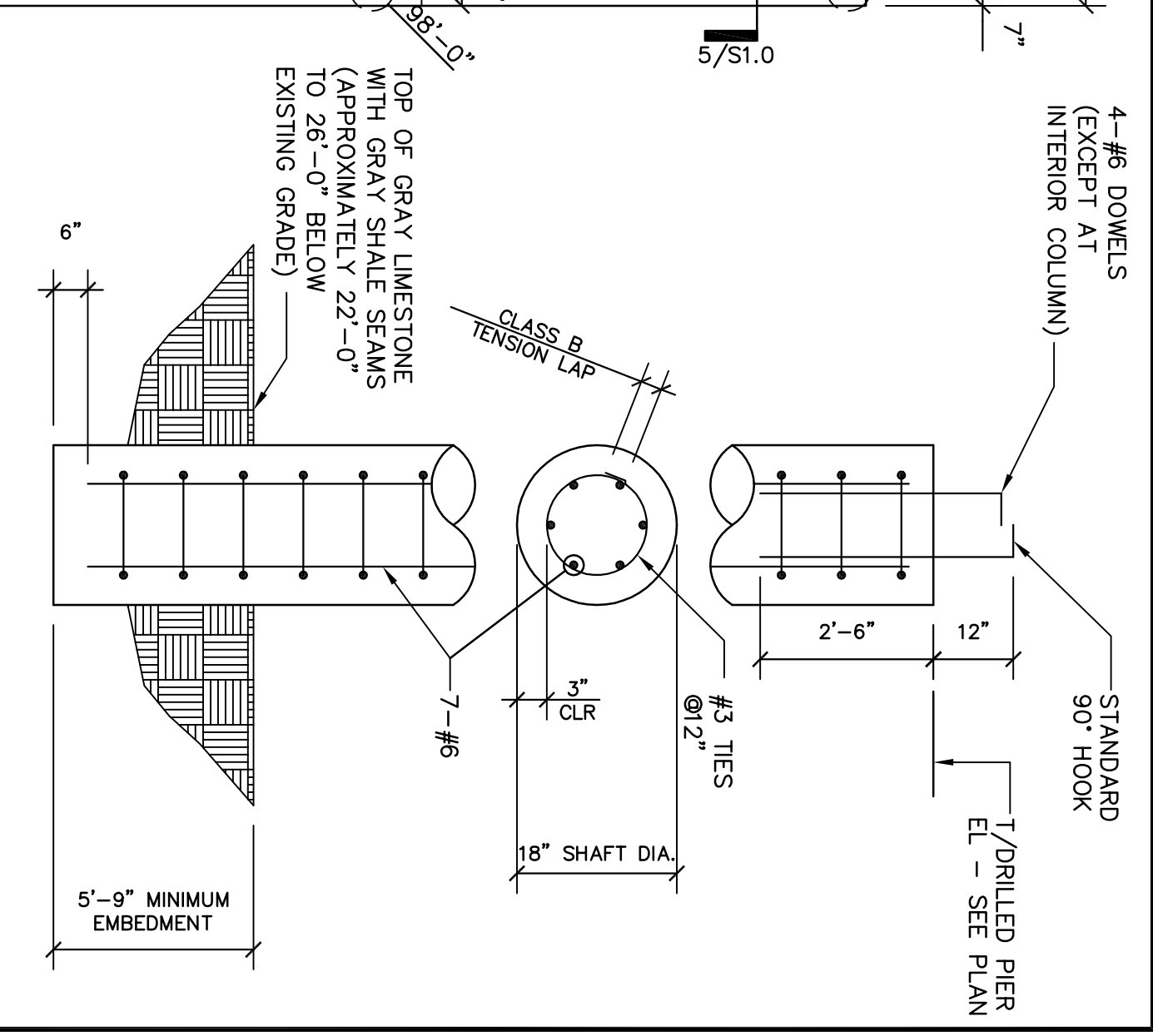
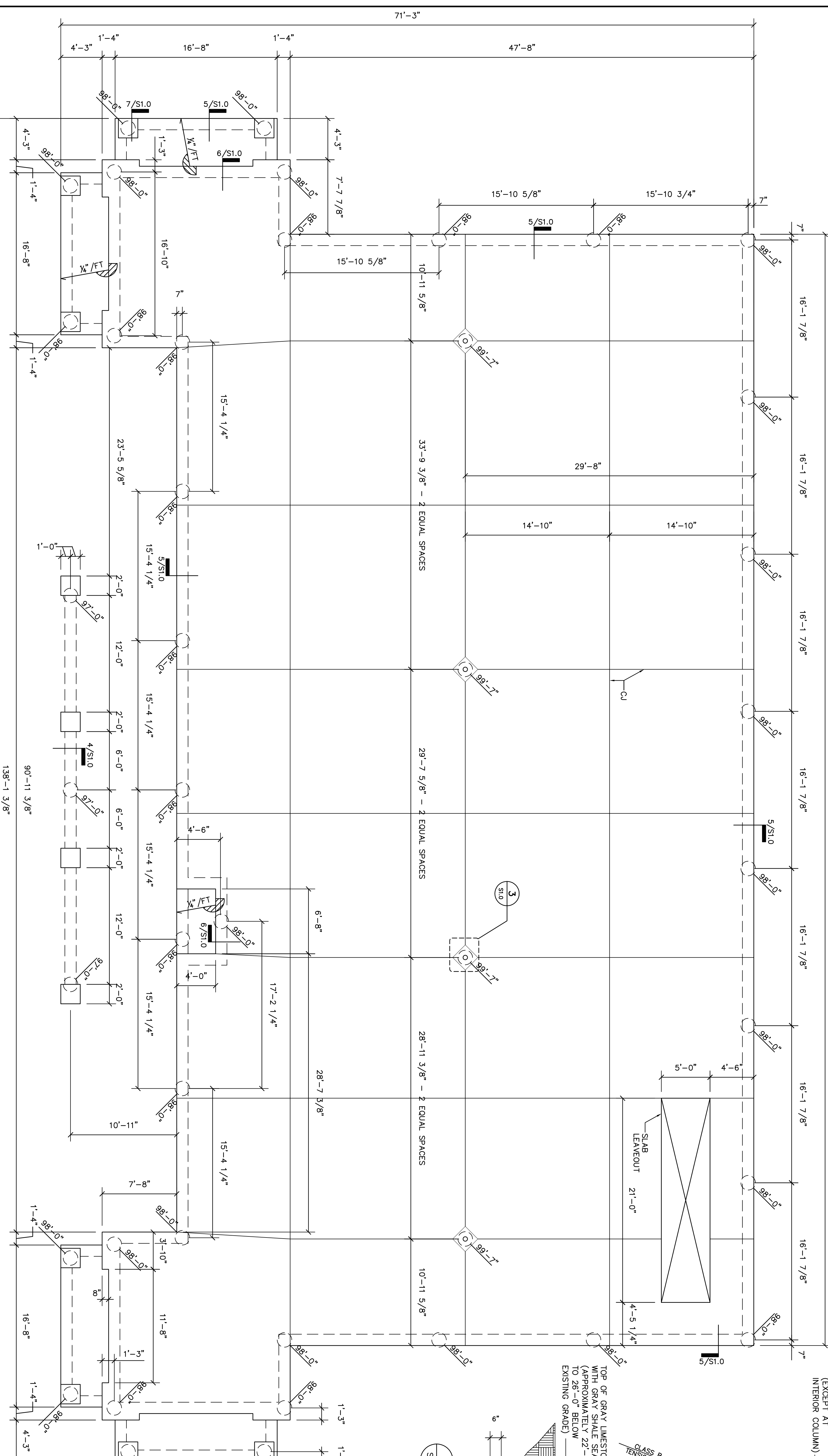


11'-4" - 3 1/2"



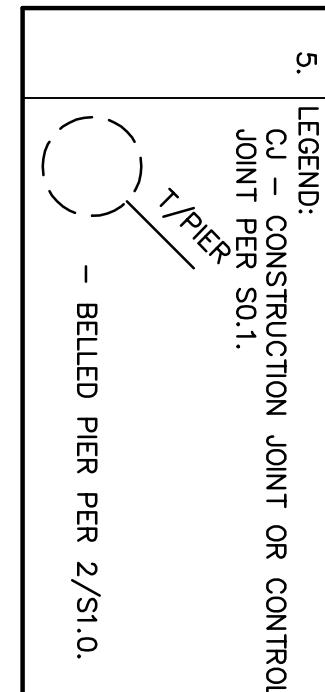
**2 TYPICAL DRILLED PIER DETAIL**  
SCALE: NTS

THE SEAL APPEARING ON THIS DOCUMENT WAS AUTHORIZED BY MICHAEL D. LEA, P. E. BASED ON THE BASIS OF HIS REVIEW OF THE DRAWING AND HIS BELIEF THAT THE DRAWING ACCURATELY REPRESENTS THE DESIGN AND CONSTRUCTION OF THE PROJECT. THIS SEAL DOES NOT CONSTITUTE AN ENDORSEMENT OF THE PROJECT OR A GUARANTEE OF THE ACCURACY OF THE INFORMATION CONTAINED HEREIN. THE ENGINEER IS NOT RESPONSIBLE FOR ANY ERRORS OR OMISSIONS IN THE DRAWING OR FOR ANY CONSEQUENCES ARISING FROM THE USE OF THE DRAWING. THE ENGINEER'S LIABILITY IS LIMITED TO THE PROFESSIONAL ENGINEERING PRACTICE ACT.

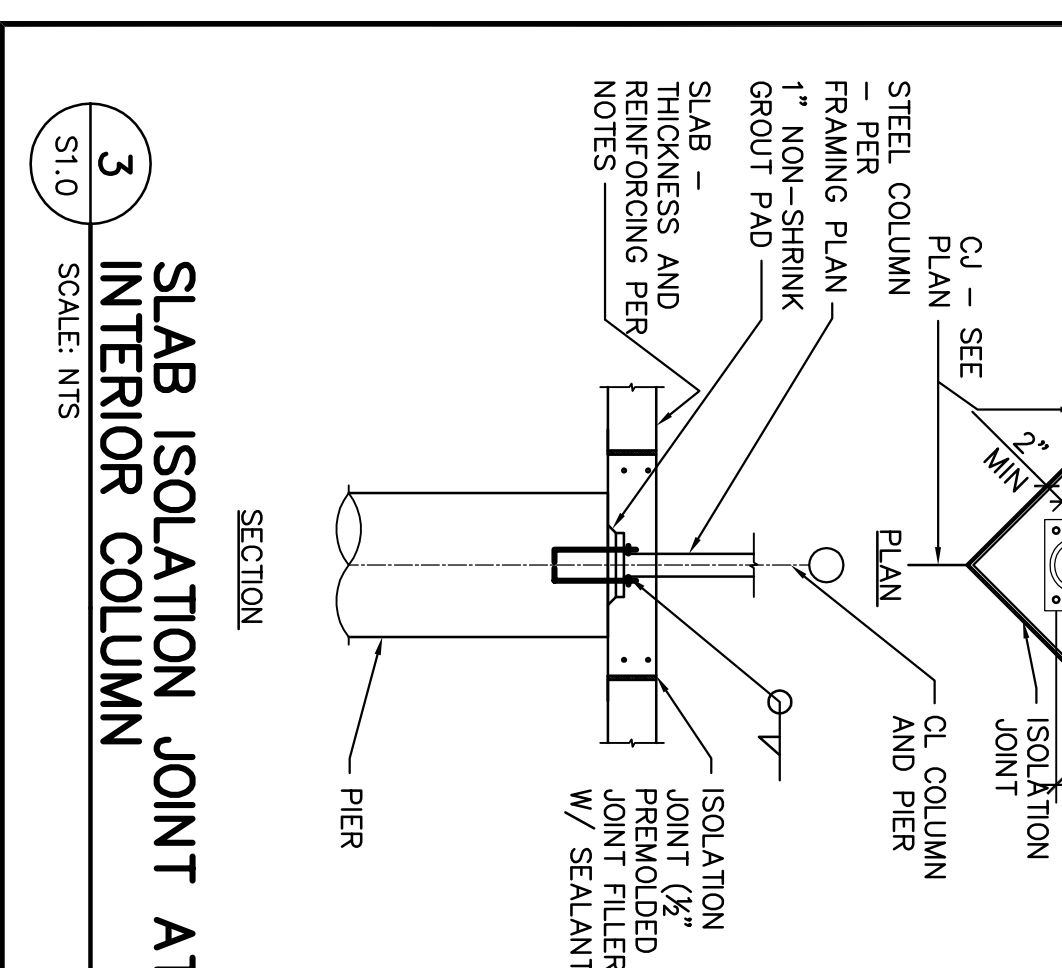
**1 FOUNDATION PLAN**  
SCALE: 3/16"=1'-0"

**FOUNDATION PLAN NOTES**

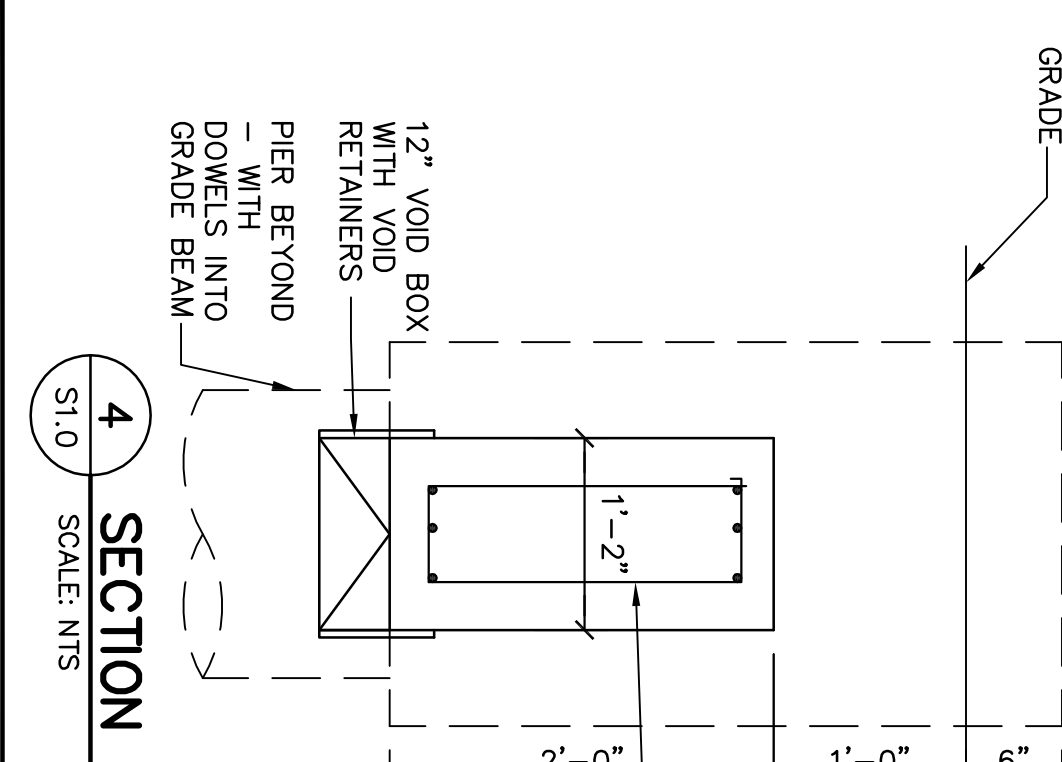
NOTE	DESCRIPTION
1.	VERIFY ALL DIMENSIONS WITH ARCHITECTURAL DRAWINGS.
2.	COORDINATE ALL DIMENSIONS, DROPS, SLOPES, ELEVATIONS, BRICK, EDGES AND DIMENSIONS WITH ARCHITECTURAL DRAWINGS.
3.	REFER TO SHEET S0.1 FOR GENERAL NOTES, COORDINATE ANCHOR BOLT LOCATIONS WITH FRAMING PLANS AND DETAILS.
4.	COORDINATE ANCHOR BOLT LOCATIONS WITH LEGEND.
5.	CJ - CONSTRUCTION JOINT OR CONTROL JOINT PER S0.1.



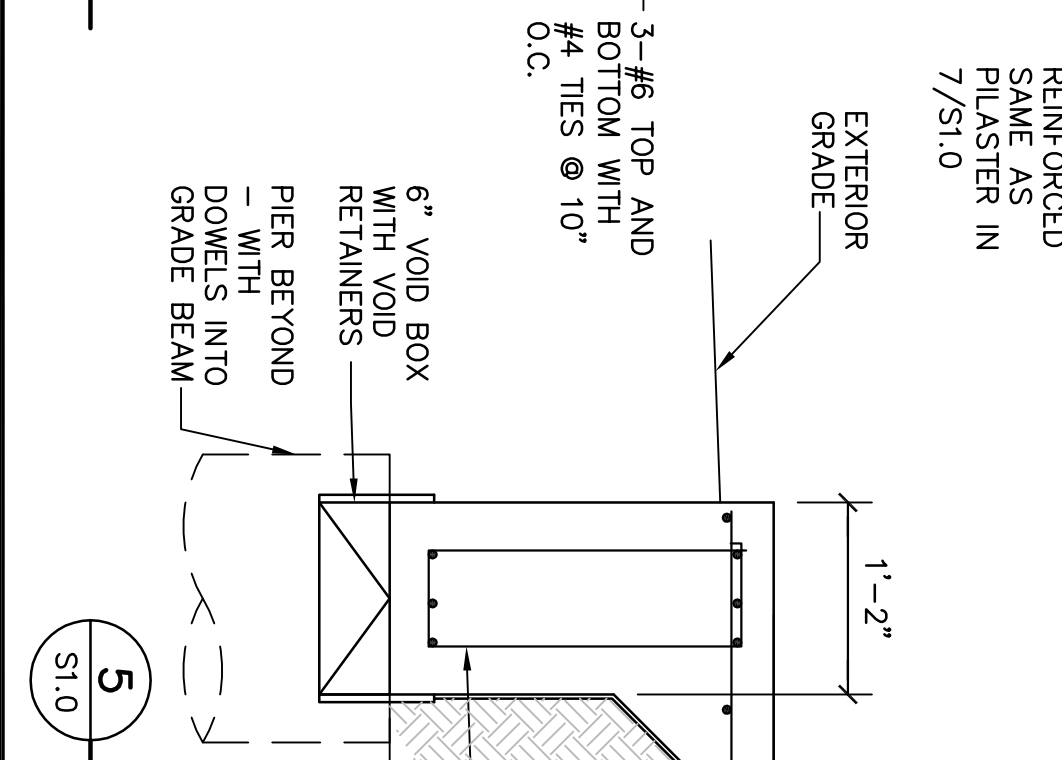
**1 TYPICAL PIER**  
- BELLED PIER PER 2/S1.0



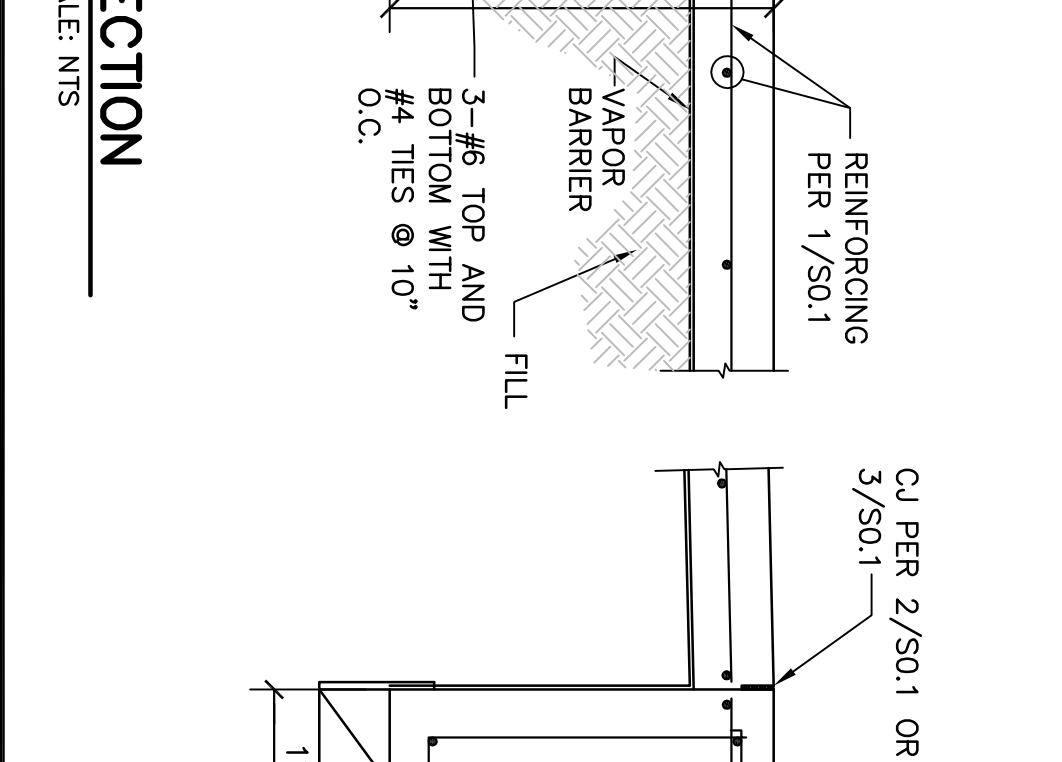
**3 SLAB ISOLATION JOINT AT INTERIOR COLUMN**  
SCALE: NTS



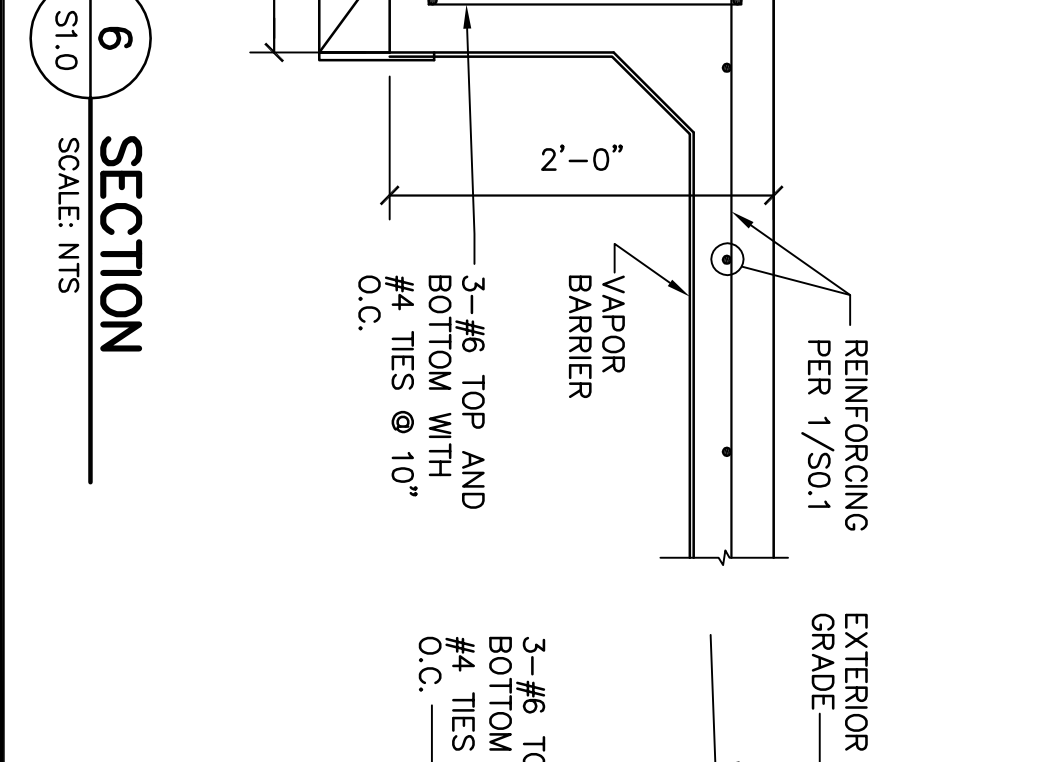
**4 SECTION**  
SCALE: NTS



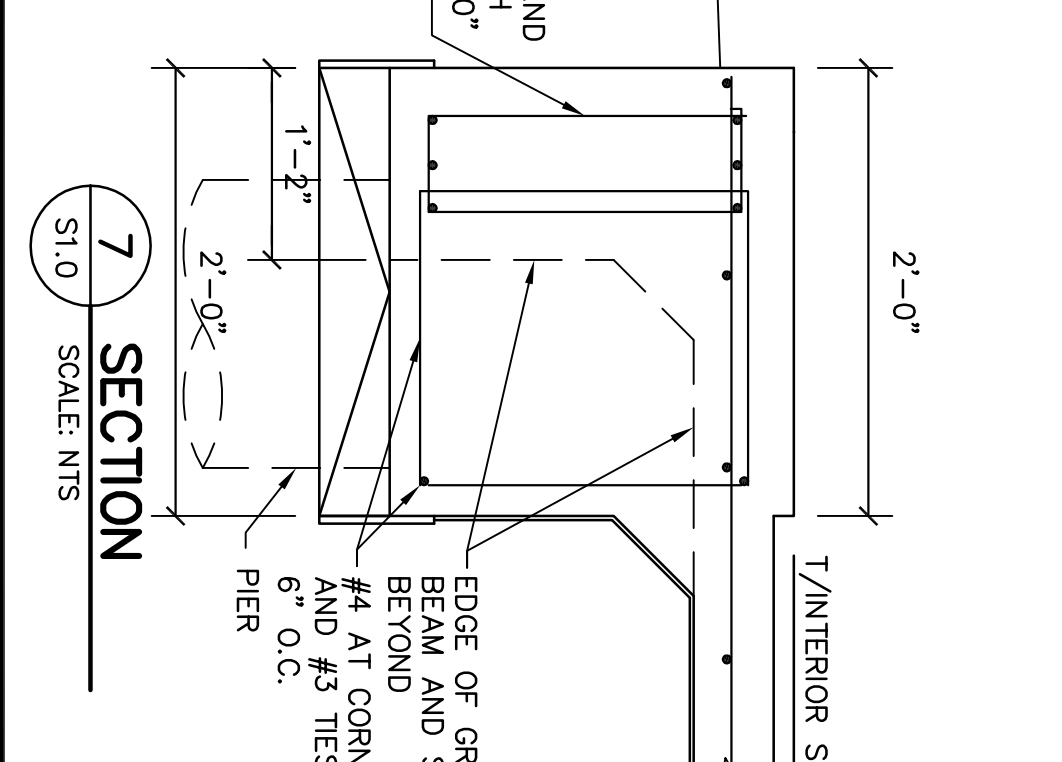
**5 SECTION**  
SCALE: NTS



**6 SECTION**  
SCALE: NTS



**7 SECTION**  
SCALE: NTS



**8 SECTION**  
SCALE: NTS

STRUCTURAL ENGINEER OF RECORD  
**MICHAEL LEA ENTERPRISES**  
STRUCTURAL ENGINEERING SERVICES  
TEXAS ENGINEERING FIRM REGISTRATION # 7474  
3350 BINYON AVENUE  
FORT WORTH, TEXAS 76183  
PHONE: 817-454-8032  
FAX: 817-457-5551  
MILE JOB NUMBER  
**09-10**

SHEET TITLE  
**STRUCTURAL FOUNDATION PLAN**  
SHEET NUMBER  
**S1.0**  
DATE OF ORIGINAL ISSUE  
MARCH 16, 2009

JOB NUMBER  
**09.016**

**COOK CHILDREN'S PRIMARY CARE CLINIC**  
BURLESON, TX

*linear!*  
the architecture of Kemery Brundige and Young  
5005 W Royal Lane Suite 144  
Irving, TX 75063  
Phone: 972.929.9226  
Fax: 972.929.9061  
inbox@linear-architecture.com



NO.	REVISIONS	DATE