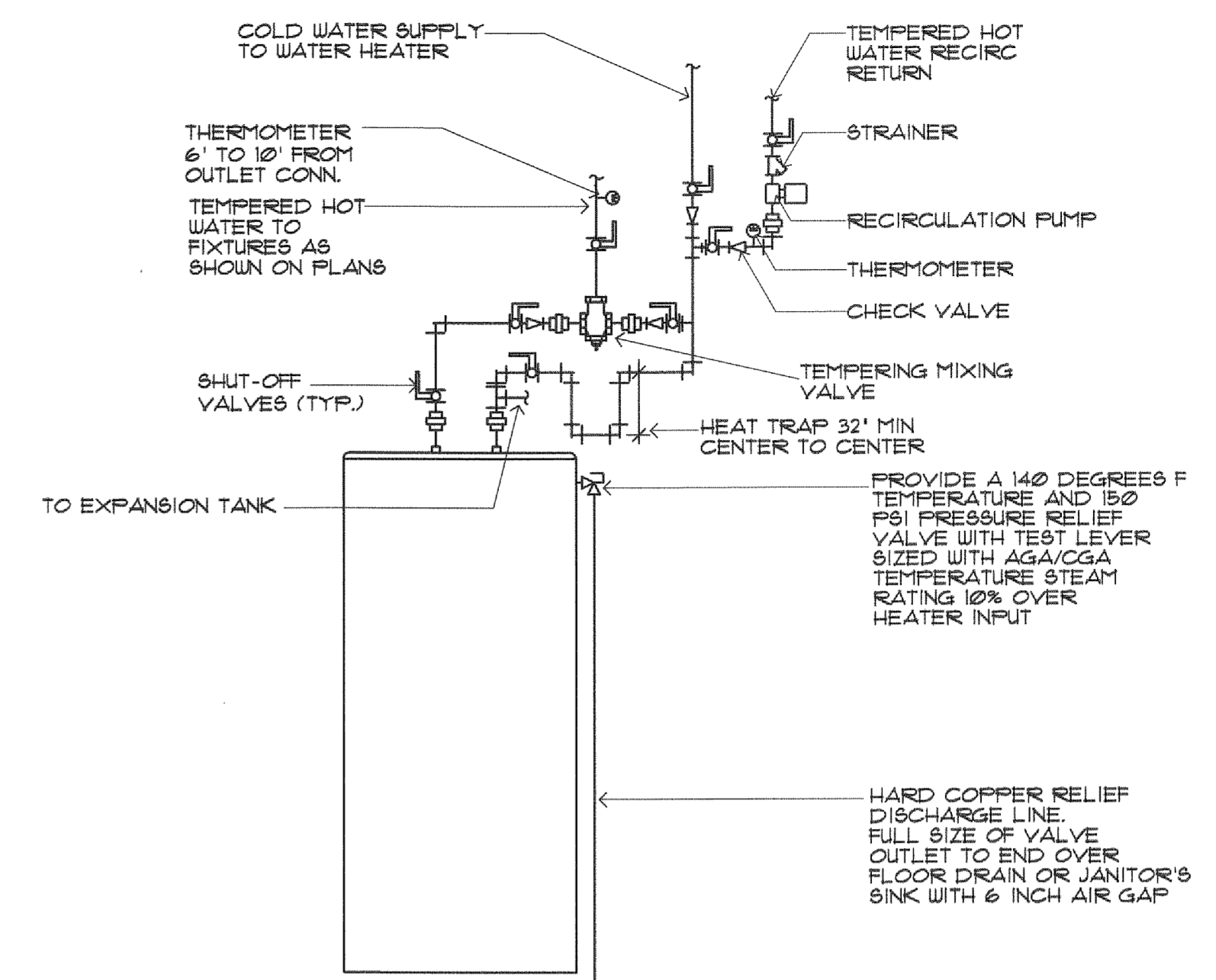
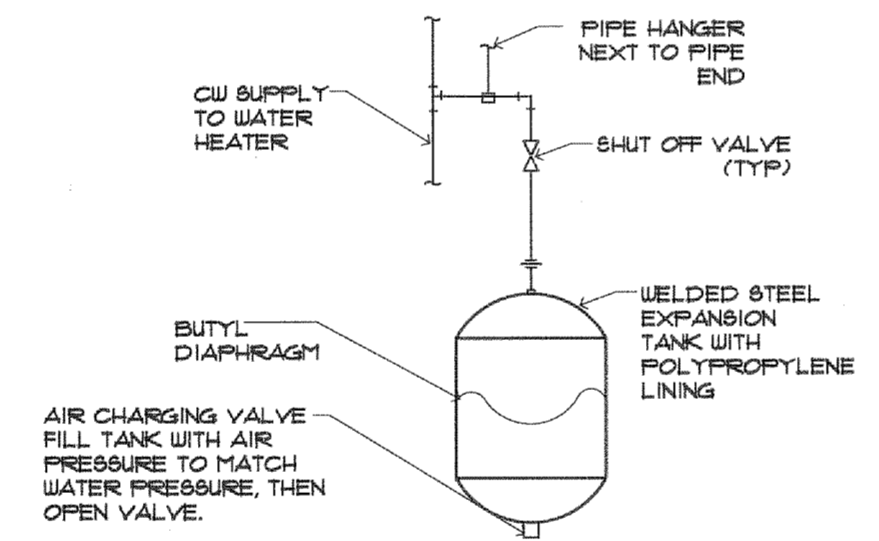


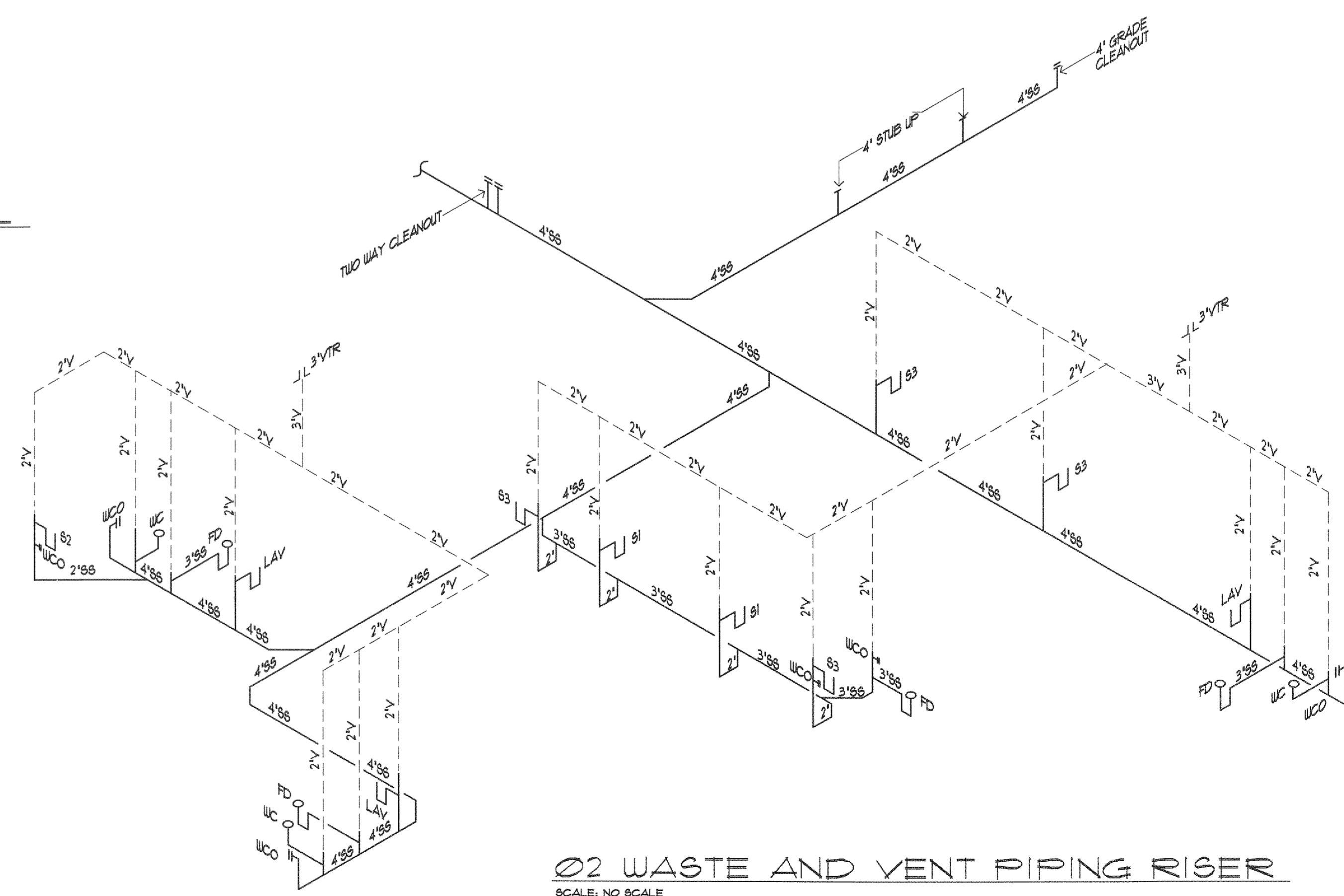
01 WATER SUPPLY RISER
SCALE: NO SCALE



03 WATER HEATER DETAIL
SCALE: NO SCALE



04 EXPANSION TANK DETAIL
SCALE: NO SCALE



02 WASTE AND VENT PIPING RISER
SCALE: NO SCALE

MARK	FIXTURE	MANUFACTURER	MODEL NO.	DESCRIPTION
WC	WATER CLOSET	TOTO	C9T1448L	16 GPF, ADA ACCESSIBLE WITH GRAB BARS (REF ARCHITECTURAL) AND FLUSH HANDLE ON SINK SIDE OF WATER CLOSET, OR APPROVED EQUAL TOTO MODEL. SEAT SHALL BE BEM16 1955C OR APPROVED EQUAL.
LAV	WALL MOUNT LAVATORY	KOHLER	K-2005-0, ADA COMPLIANT	FURNISHED COMPLETE WITH CHROME PLATED OFFSET 1-1/2 INCH P-TRAP, ANGLE STOP WITH FLEXIBLE METAL SUPPLIES, HAND LAY GUARD INSULATION KIT, FAUCET: MAINLINE 211-CF OR APPROVED EQUAL.
S1	WORK ROOM/LAB SINK	ELKAY	ADA COMPLIANT	10" INCH DEEP WITH A T45 BRASS B-2866-05 FAUCET W/SWIVEL, OR APPROVED EQUAL.
S2	BREAK ROOM SINK	FHP/KINDRED	F88603BX	FAUCET: T45 BRASS B-2866-05, OR APPROVED EQUALS.
S3	EXAM/HAND WASH SINK	ELKAY	D11193, ADA COMPLIANT	FAUCET: T45 BRASS B-2866-05, OR APPROVED EQUALS.
WH	WATER HEATER	A.O. SMITH	DEL-40	40 GALLON ELECTRIC HEATER, 6KW HEATING ELEMENT, SET DISCHARGE TEMP TO 105F, 98 GPH RECOVERY.
WCO	WALL CLEANOUT	JOSAM	58TD020	CAST IRON CAULKING FERRULE WITH BRASS RAISED HEAD PLUG, POLISHED NICKALLOY OR STAINLESS STEEL COVERPLATE, SECURED WITH SCREW. SPIGOT CONNECTION SIZE AS INDICATED ON PLANS.
FD	FLOOR DRAIN	ZURN	ZN-1901	12"x12"x8" DEEP SUMP, WHITE, WITH 3/4 GRATE. PROVIDE W/TRAP PRIMER TO MAINTAIN 2" TRAP SEAL.
TP	TRAP PRIMER	PRECISION PLUMBING PRODUCTS	PP-1	1/2" INLET AND OUTLET. PROVIDE WALL ACCESS PANEL.
HB	HOSE-BIB			ANTI-SIPHON, AUTOMATIC DRAINING WALL HYDRANT WITH INTEGRAL BACKFLOW PREVENTER AND ALL BRONZE INTERIOR PARTS. KEY OPERATED, 3/4" SOLDER INLET.
	BACKFLOW PREVENTER	WATTS	009/001 SERIES	MODEL 009 SERIES FOR REDUCED PRESSURE TYPE AND MODEL 001 FOR DOUBLE CHECK VALVE TYPE. PROVIDE ALL NECESSARY DRAIN PIPING, ETC. FOR COMPLETE INSTALLATION. SIZE 1-1/2 INCH.
	MIXING VALVE	SYMONS	THERMIXER 5-120	1" INLETS AND OUTLET, THERMOSTATIC CONTROLLER WITH SEPARATE CHECK STOPS, STAINLESS STEEL CONTROL COMPONENTS. SET TEMPERATURE AT 105 DEG. F. MOUNT IN ACCESSIBLE LOCATION. MINIMUM FLOW RATE OF 2 GPM.
	EXPANSION TANK	AMTROL	5T-12-C	MAXIMUM WORKING PRESSURE, 150 PSI, TOTAL VOLUME 4.7 GALLONS, SIZE 12" DIA. X 12-1/2" HIGH, CONNECTION SIZE 1/2".
	CIRCULATION PUMP	BELL & GOSSETT	100	10 GPM AT 8 FOOT HEAD, 1/6 HP, 1725 RPM MINIMUM, 115V, 1 PHASE. INSTALL NEAR WATER HEATER PER DETAIL.

PLUMBING LEGEND	
— SB —	SANITARY SEWER
— CW —	COLD WATER
— HW —	HOT WATER
— V —	VENT
— CD —	CONDENSATE DRAIN
— — —	EXISTING PIPING AS DESIGNATED ON DISCS
— [] —	END CAP
— [] —	BALL VALVE
— [] —	DIRECTION OF FLOW
YCO	YARD CLEAN OUT
WCO	WALL CLEAN OUT
CO	CLEAN OUT
GCO	GRADE CLEAN OUT
FCO	FLOOR CLEAN OUT
WH	WALL HYDRANT
HB	HOSE BIB
VTR	VENT THRU ROOF
BFP	BACK FLOW PREVENTER

REVISIONS
DATE
NO.

CONTRACTOR SHALL VERIFY ALL DIMENSIONS AT THE JOB SITE AND NOTIFY THE ARCHITECTS OF ANY DIMENSIONAL ERRORS, OMISSIONS OR DISCREPANCIES BEFORE BEGINNING OR FABRICATING ANY WORK
DO NOT SCALE DRAWINGS

linear!
the architecture of Kerney Brundige and Young
5005 W Royal Lane, Suite 144
Irving, TX 75063
Phone: 972.929.9226
Fax: 972.929.9061
info@linear-architecture.com

**COOK CHILDREN'S
PRIMARY CARE CLINIC**
BURLESON, TX

JOB NUMBER
09.016

SHEET TITLE
**PLUMBING
DETAILS**

SHEET NUMBER
P3

DATE OF ORIGINAL ISSUE
© **MARCH 16, 2009**