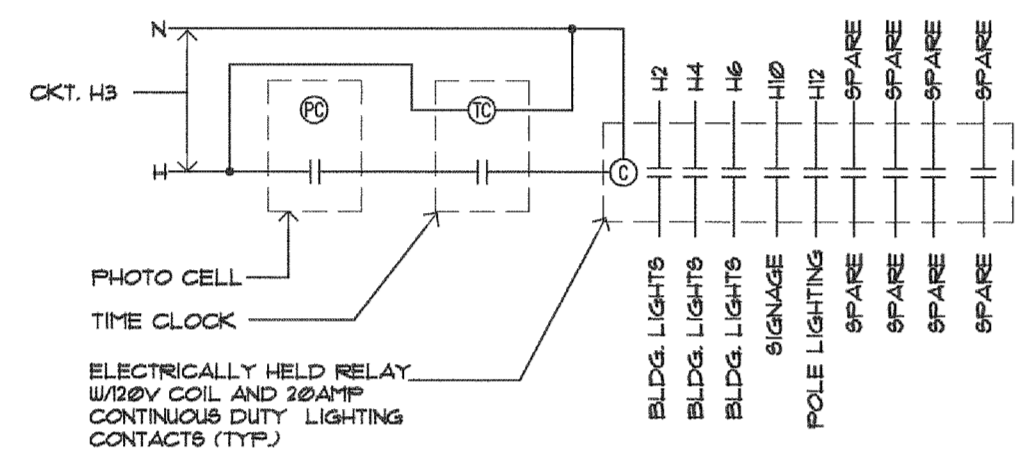


NOTES

1. EACH IG CIRCUIT SHALL HAVE MAX. OF (6) WORK STATION RECEPTACLES.
2. ISOLATED GROUND INSTALLATION SHALL COMPLY WITH
3. EACH CIRCUIT SHALL HAVE ITS OWN ISOLATED
4. ENTIRE GROUNDING SYSTEM SHALL COMPLY WITH
5. CONDUCTORS FROM DEVICES IF RUN SEPARATELY, MAINTAIN CLEARANCE AT BREAKER TERMINAL IN PANEL.
6. USE MINIMUM #10 AWG FOR ALL IG CIRCUIT WIRING UNDER 200 FEET. USE #8 AWG FOR OVER 200 FEET.

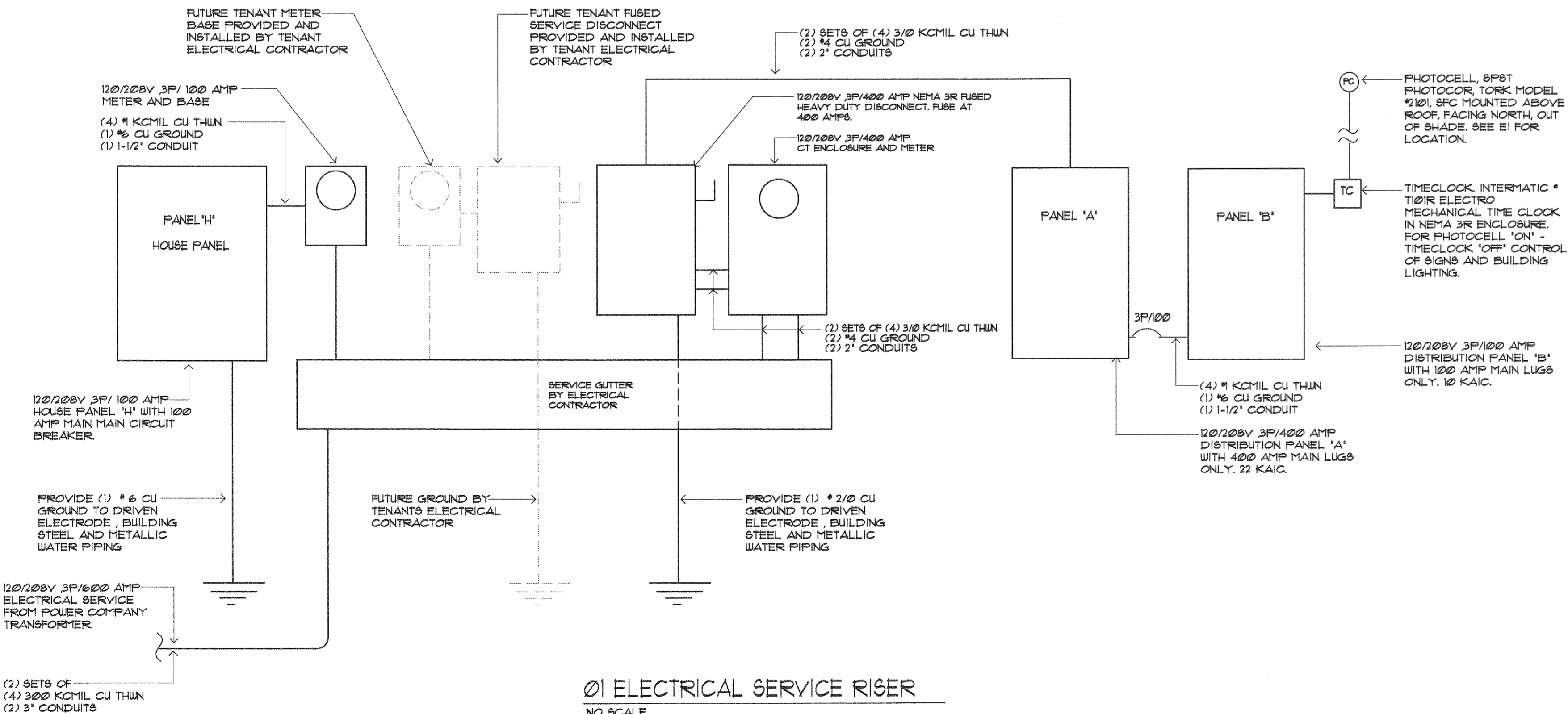
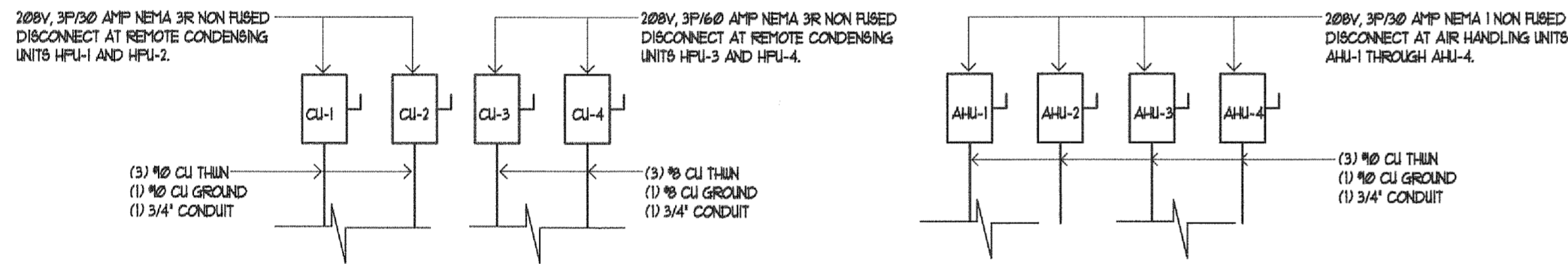
02 IG RECEPTACLE DETAIL

NO SCALE



03 EXTERIOR LIGHTING CONTROL DIAGRAM

NO SCALE



01 ELECTRICAL SERVICE RISER

NO SCALE

LEASE SPACE LOAD ANALYSIS		2000 SQ. FT.
LIGHTING @ 3.5 VA / SQ FT. =	7000 VA	
SIGNAGE @ 125% =	1500 VA	
RECEPTACLES =	2000 VA	
MISCELLANEOUS @ 100% =	4000 VA	
HVAC EQUIPMENT @ 100% =	16920 VA	
WATER HEATER @ 100% =	4500 VA	
LARGEST LOAD @ 25% =	2010 VA	
TOTAL DEMAND LOAD =	37930 VA	
TOTAL AMPS =	106 AMPS	

MEDICAL OFFICE LOAD ANALYSIS	
LIGHTS AND SIGNAGE @ 125% =	9181 VA
RECEPTACLES (24.46) @ 50% AFTER 10KW =	17230 VA
HVAC EQUIPMENT @ 100% =	55728 VA
MISCELLANEOUS @ 100% =	4560 VA
WATER HEATER @ 100% =	6000 VA
LARGEST MOTOR LOAD @ 25% =	1150 VA
TOTAL DEMAND LOAD =	93849 VA
TOTAL AMPS =	262 AMPS

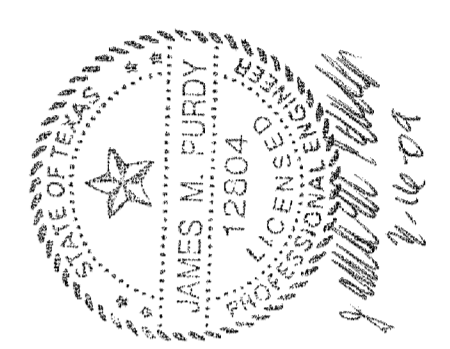
TOTAL BUILDING LOAD ANALYSIS	
TOTAL LEASE SPACE DEMAND LOAD =	37930 VA
TOTAL MEDICAL OFFICE DEMAND LOAD =	93849 VA
TOTAL HOUSE PANEL DEMAND LOAD =	8225 VA
TOTAL BUILDING DEMAND LOAD =	140004 VA
	388 AMPS

PANEL "A" SCHEDULE											
120/208V, 3P/400 AMP 42 SPACE RECESSED PANEL W/400 AMP MAIN LUGS ONLY. 22 KAIC											
NOTES:	DESCRIPTION	W/O	TRIP	TOTAL	ABC	TOTAL	TRIP	W/O	DESCRIPTION	NOTES:	
	AHU 1	3	30	2106	1	2	2256	30	HPU 1	2	
	AHU 2	3	30	2106	3	4	2256	30	HPU 2	2	
	AHU 3	3	30	2106	5	6	2256	30	HPU 3	2	
	AHU 4	3	30	2106	7	8	2256	30	HPU 4	2	
	WATER HEATER	3	30	2000	13	14	2820	40			
	PANEL 'B'	3	100	9120	15	16	2820	40			
	SPARE	1	20	2106	17	18	2820	40			
	SPARE	1	20	2106	19	20	2820	40			
	SPARE	1	20	2106	21	22	2820	40			
	SPARE	1	20	2106	23	24	2820	40			
	SPARE	1	20	2106	25	26	2820	40			
	SPARE	1	20	2106	27	28	2820	40			
	SPARE	1	20	2106	29	30	2820	40			
	SPARE	1	20	2106	31	32	2820	40			
	SPARE	1	20	2106	33	34	2820	40			
	SPARE	1	20	2106	35	36	2820	40			
	SPARE	1	20	2106	37	38	2820	40			
	SPARE	1	20	2106	39	40	2820	40			
	SPARE	1	20	2106	41	42	2820	40			
	TOTAL 'A'			33441							
	TOTAL 'B'			32521							
	TOTAL 'C'			32131							
	PANEL TOTAL:			98093W (272 AMPS)							

PANEL "B" SCHEDULE											
120/208V, 3P/200 AMP 42 SPACE RECESSED PANEL W/200 AMP MAIN LUGS ONLY. 22 KAIC											
NOTES:	DESCRIPTION	W/O	TRIP	TOTAL	ABC	TOTAL	TRIP	W/O	DESCRIPTION	NOTES:	
	AHU RECPT/ LTS	1	20	1020	1	2	120	20	RECEPTACLES		
	RECEPTACLES / RECIRC PUMP	1	20	940	3	4	1000	20	RECEPTACLES		
	RECEPTACLES	1	20	720	5	6	600	20	REFRIGERATOR		
	RECEPTACLES	1	20	1260	7	8	600	20	REFRIGERATOR		
	RECEPTACLES	1	20	1260	9	10	600	20	REFRIGERATOR		
	RECEPTACLES	1	20	1440	11	12	720	20	RECEPTACLES		
	RECEPTACLES	1	20	720	13	14	1000	20	RECEPTACLES		
	RECEPTACLES	1	20	1260	15	16	360	20	RECEPTACLES		
	MICROWAVE	1	20	1500	17	18	720	20	RECEPTACLES		
	REFRIGERATOR / ICE MAKER	1	20	900	19	20	900	20	RECEPTACLES		
	RECEPTACLES	1	20	1440	21	22			SPACE		
	RECEPTACLES	1	20	1080	23	24			SPACE		
	RECEPTACLES	1	20	1080	25	26	1260	20	RECEPTACLES		
	RECEPTACLES	1	20	900	27	28			SPACE		
	RECEPTACLES	1	20	720	29	30			SPACE		
	RECEPTACLES	1	20	1440	31	32			SPACE		
	RECEPTACLES	1	20	540	33	34			SPACE		
	ELEC RM DED RCPT.	1	20	360	35	36			SPACE		
	SPACE				37	38			SPACE		
	RECEPTACLES	1	20	1440	39	40			SPACE		
	TELEPHONE / SECURITY	1	20	360	41	42			SPACE		
	TOTAL 'A'			9720							
	TOTAL 'B'			9820							
	TOTAL 'C'			9480							
	PANEL TOTAL:			29020W (81 AMPS)							

PANEL "H" SCHEDULE											
120/208V, 3P/100 AMP 12 SPACE SURFACE PANEL W/100 AMP MAIN CIRCUIT BREAKER											
NOTES:	DESCRIPTION	W/O	TRIP	TOTAL	ABC	TOTAL	TRIP	W/O	DESCRIPTION	NOTES:	
	EXTERIOR RECEPTACLES	1	20	1440	1	2	900	20	EXTERIOR BLDG LIGHTS	3	
	EXIT/EMERG. / CONTACTOR	1	20	340	3	4	900	20	EXTERIOR BLDG LIGHTS	3	
	SPARE	1	20		5	6	800	20	EXTERIOR BLDG LIGHTS	3	
	SPARE	1	20		7	8			SPACE		
	SPARE	1	20		9	10	1200	20	SIGNAGE	3	
	SPARE	1	20		11	12	1000	20	SITE LIGHTING	3	
	TOTAL 'A'			2340							
	TOTAL 'B'			2440							
	TOTAL 'C'			1800							
	PANEL TOTAL:			6580W x125%=8225 WATTS (23 AMPS)							

DATE _____
 REVISIONS _____
 NO. _____



Linear!
 the architecture of Kemyry Brundige and Young
 5005 W Royal Lane, Suite 144
 Irving, TX 75063
 Phone: 972.929.9226
 Fax: 972.929.9061
 info@linear-architecture.com

**COOK CHILDREN'S
 PRIMARY CARE CLINIC**
 BURLESON, TX

JOB NUMBER
09.016

SHEET TITLE
**ELECTRICAL
 DETAILS**

SHEET NUMBER
E3
 DATE OF ORIGINAL ISSUE
 © MARCH 16, 2009