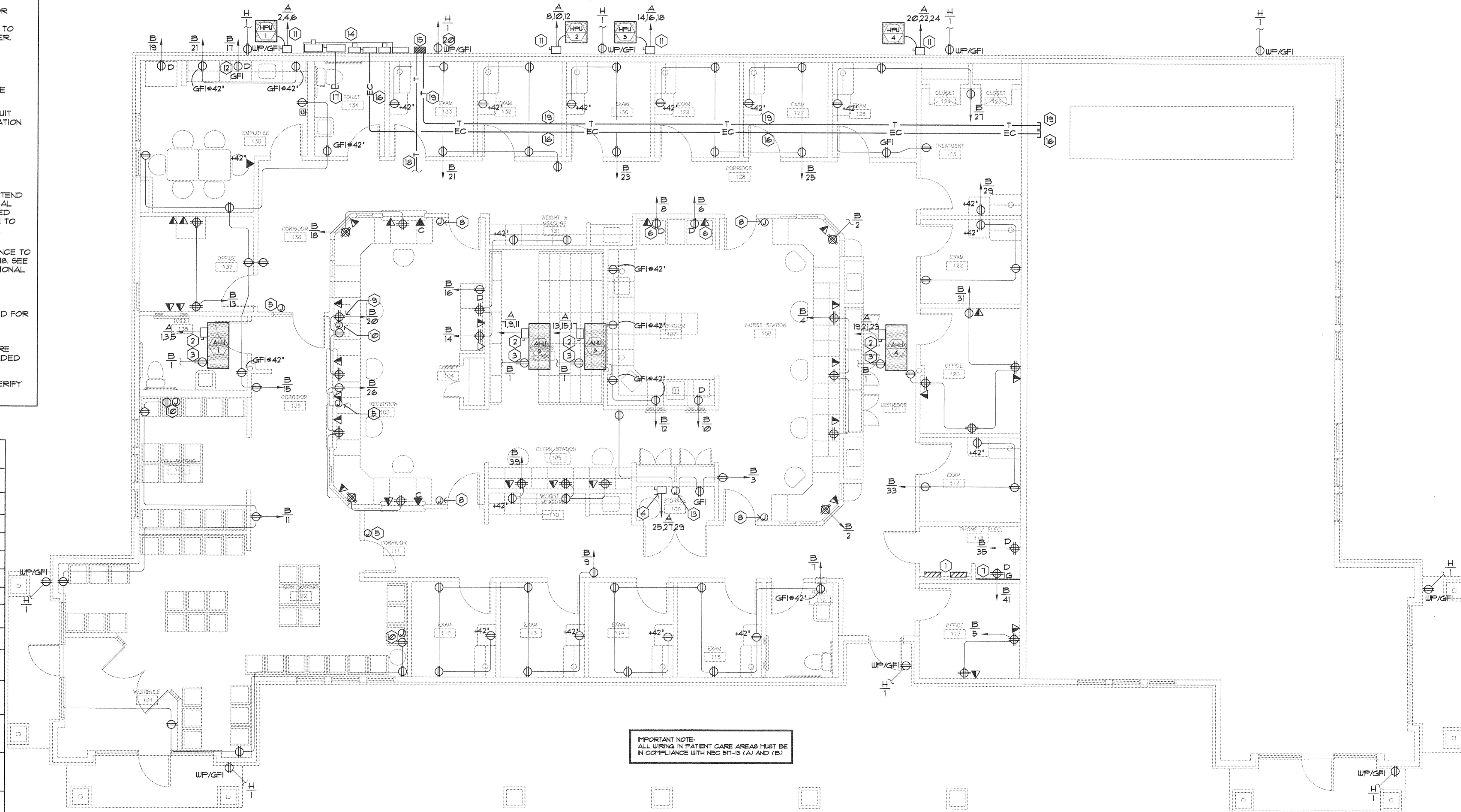


**NOTES BY SYMBOL**

- 1 LOCATION OF NEW ELECTRICAL PANELS. WALL SHALL BE FURRED OUT AS NECESSARY TO ACCOMMODATE RECESSED ELECTRICAL PANELS. ALL CIRCUITS SHALL BE CLEARLY AND PERMANENTLY LABELED. IF EXPOSED TO VIEW OF CLINIC, PANELS SHALL BE PAINTED TO MATCH WALLS, WHERE PERMITTED BY CODE. SEE ELECTRICAL SERVICE RISER AND PANEL SCHEDULES FOR ADDITIONAL INFORMATION.
- 2 DISCONNECT ABOVE CEILING FOR AIR HANDLING UNIT. SEE ELECTRICAL SERVICE RISER AND PANEL SCHEDULES FOR ADDITIONAL INFORMATION.
- 3 PROVIDE 120V, 1P/20 AMP RECEPTACLE MOUNTED TO STRUCTURE ABOVE AT MECHANICAL PLATFORM FOR EQUIPMENT MAINTENANCE.
- 4 208V, 3P/30 AMP NEMA 1 DISCONNECT FOR WATER HEATER CONNECTION. VERIFY MOUNTING HEIGHT.
- 5 PROVIDE AN ELECTRIC STRIKE FOR DOOR RELEASE AND RELAYS TO JUNCTION BOXES AS INDICATED FOR REMOTE RELEASE (FOR INCOMING PATIENTS). COORDINATE W/OWNER'S FIELD REPRESENTATIVE.
- 6 REFRIGERATOR REFRIGERATION SYSTEMS SHALL BE ROUTED THROUGH ALARM SYSTEM. COORDINATE LOCATION AND TYPE OF ALARM SYSTEM W/OWNER'S FIELD REPRESENTATIVE.
- 7 INSTALL 3/4" PLYWOOD BOARD PAINTED TO MATCH WALL FOR TELEPHONE BOARDS. INSTALL 1 DEDICATED ISOLATED GROUND OUTLET ON THE TELEPHONE BOARD. PROVIDE TWO 3" CONDUITS THROUGH THE GYPSUM BOARD CEILING. ELECTRICAL CONTRACTOR SHALL PROVIDE SURFACE MOUNTED GROUNDING CONNECTION LUGS WITH 1/2" CU BARE COPPER GROUND EXTEND TO MAIN SERVICE GROUND.
- 8 PROVIDE JUNCTION BOX AT 60" (CENTER ABOVE LIGHT SWITCH) WITH COVER PLATE. INSTALL 1" CONDUIT WITHIN WALL, WITH FULL STRING, FROM JUNCTION BOX UP THROUGH WALL AND STUB CONDUIT OUT ABOVE CEILING SPACE FOR CONNECTION OF 4-STATION CALL LIGHT BY INTERCOM, INC. CONFIRM REQUIREMENTS OF FINAL LIGHT SYSTEM INSTALLATION WITH MARK DUNCAN (682) 885-1891.
- 9 LOCATION OF DVD PLAYER. COORDINATE WITH OWNER'S FIELD REPRESENTATIVE.
- 10 PROVIDE 120V, 20 AMP RECEPTACLE FLUSH MOUNT IN WALL. PROVIDE FLUSH MOUNT 2X4 JUNCTION BOX WITH WHITE COVER FOR FUTURE CABLE FROM OWNER'S DVD PLAYER ADJACENT TO RECEPTACLE. EXTEND EMPTY 3/4" CONDUIT UP THROUGH WALL TO MINIMUM 6" ABOVE FINISHED CEILING, MOUNT AT 96" AFF TO CENTER.
- 11 WALL MOUNTED DISCONNECT FOR REMOTE CONDENSING UNIT CONNECTION. SEE ELECTRICAL SERVICE RISER FOR ADDITIONAL INFORMATION.
- 12 120V, 1P/20 AMP RECEPTACLE IN UPPER CABINET FOR MICROWAVE CONNECTION. VERIFY EXACT HEIGHT IN FIELD.
- 13 PROVIDE JUNCTION BOX AND ASSOCIATED 120V, 1P/20 AMP CIRCUIT FOR HOT WATER RECIRC PUMP CONNECTION. VERIFY EXACT LOCATION AND HEIGHT IN FIELD.
- 14 ELECTRICAL SERVICE ENTRANCE EQUIPMENT. SEE ELECTRICAL SERVICE RISER FOR ADDITIONAL INFORMATION.
- 15 TELEPHONE DEMARK LOCATION BY TELEPHONE COMPANY.
- 16 PROVIDE 2" EMT CONDUIT WITH FULL STRING FROM ELECTRICAL SERVICE ENTRANCE TO FUTURE LEASE SPACE. TENANT SHALL EXTEND CONDUIT FROM INSIDE DEMARSED PREMISES TO TENANT'S ELECTRICAL PANEL. CONDUIT TO PENETRATE EXTERIOR WALL WITH 2" THREADED NIPPLE FOR FUTURE CONNECTION OF LB AND CONDUIT EXTENSION TO TENANT'S SERVICE DISCONNECT AND METER. SEAL AROUND WALL PENETRATION AND CAP CONDUIT FOR FUTURE USE.
- 17 EXTEND (2) 2" CONDUIT AND CONDUCTORS FROM SERVICE ENTRANCE TO MEDICAL OFFICE ELECTRICAL PANEL 'A' IN ELECTRICAL ROOM #10. SEE ELECTRICAL SERVICE RISER AND PANEL SCHEDULES FOR ADDITIONAL INFORMATION.
- 18 PROVIDE 1-1/2" CONDUIT FOR TELEPHONE CONDUCTORS FROM TELEPHONE COMPANY DEMARK TO MEDICAL OFFICE TELEPHONE BOARD IN ELECTRICAL ROOM # 10. PROVIDE FULL STRING TAGGED FOR INTENDED USE.
- 19 1" CONDUIT FROM TELEPHONE DEMARK LOCATION STUBBED INTO FUTURE LEASE SPACE. CONTINUATION OF CONDUIT TO BE BY FUTURE TENANT. PROVIDE FULL STRING TAGGED AT EACH END WITH INTENDED USE.
- 20 IN WP ENCLOSURE FOR LANDSCAPE SPRINKLER CONTROLLER. VERIFY EXACT LOCATION AND HEIGHT IN FIELD.

**ELECTRICAL SYMBOLS**

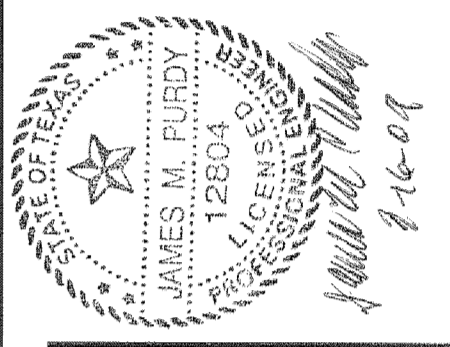
⊕	RECEPTACLE/DUPLEX, 48" AFF (OR AS INDICATED)
⊕	RECEPTACLE, QUAD, 48" AFF
⊕	TIME CLOCK
D	DEDICATED RECEPTACLE
WP	WEATHERPROOF DEVICE
GFI	GROUND FAULT INTERRUPT DEVICE
IG	ISOLATED GROUND DEVICE
⊕ <sup>3</sup>	SWITCH, 3-WAY, 48" AFF TO CTR
⊕	SWITCH, SINGLE POLE, 48" AFF TO CTR
▼C	LOCATION OF CREDIT CARD READER OUTLET AT 18" AFF WITH 3/4" CONDUIT STUBBED 6" ABOVE CEILING WITH FULL STRING.
▼	LOCATION OF WALL TELEPHONE OUTLET AT 48" AFF WITH 3/4" CONDUIT STUBBED 6" ABOVE CEILING WITH FULL STRING.
▽	LOCATION OF FAX OUTLET AT 18" AFF WITH 3/4" CONDUIT STUBBED 6" ABOVE CEILING WITH FULL STRING.
▽	LOCATION OF COMBINATION TELEPHONE/DATA OUTLET AT 18" AFF WITH 3/4" CONDUIT STUBBED 6" ABOVE CEILING WITH FULL TAPE.
⊕	SINGLE GANG JUNCTION BOX WITH BLANK COVER AT 18" AFF WITH 3/4" CONDUIT STUBBED UP ABOVE CEILING. PROVIDE FULLSTRING, UNLESS NOTED OTHERWISE.
⊕	DISCONNECT SWITCH



IMPORTANT NOTE:  
ALL WIRING IN PATIENT CARE AREAS MUST BE IN COMPLIANCE WITH NEC 517-10 (A) AND (B)

**01 POWER PLAN**  
3/16"=1'-0"

CONTRACTOR SHALL VERIFY ALL DIMENSIONS AT THE JOB SITE AND NOTIFY THE ARCHITECTS OF ANY DIMENSIONAL ERRORS, OMISSIONS OR DISCREPANCIES BEFORE BEGINNING OR FABRICATING ANY WORK  
DO NOT SCALE DRAWINGS



*Linear!*  
the architecture of Kemery Brundage and Young  
5005 W Royal Lane, Suite 144  
Irving, TX 75063  
Phone: 972.929.9226  
Fax: 972.929.9061  
info@linear-architecture.com

**COOK CHILDREN'S  
PRIMARY CARE CLINIC**  
BURLESON, TX

JOB NUMBER  
**09.016**

SHEET TITLE  
**POWER PLAN AND NOTES**

SHEET NUMBER  
**E2**

DATE OF ORIGINAL ISSUE  
MARCH 16, 2009