

LIGHT FIXTURE SCHEDULE

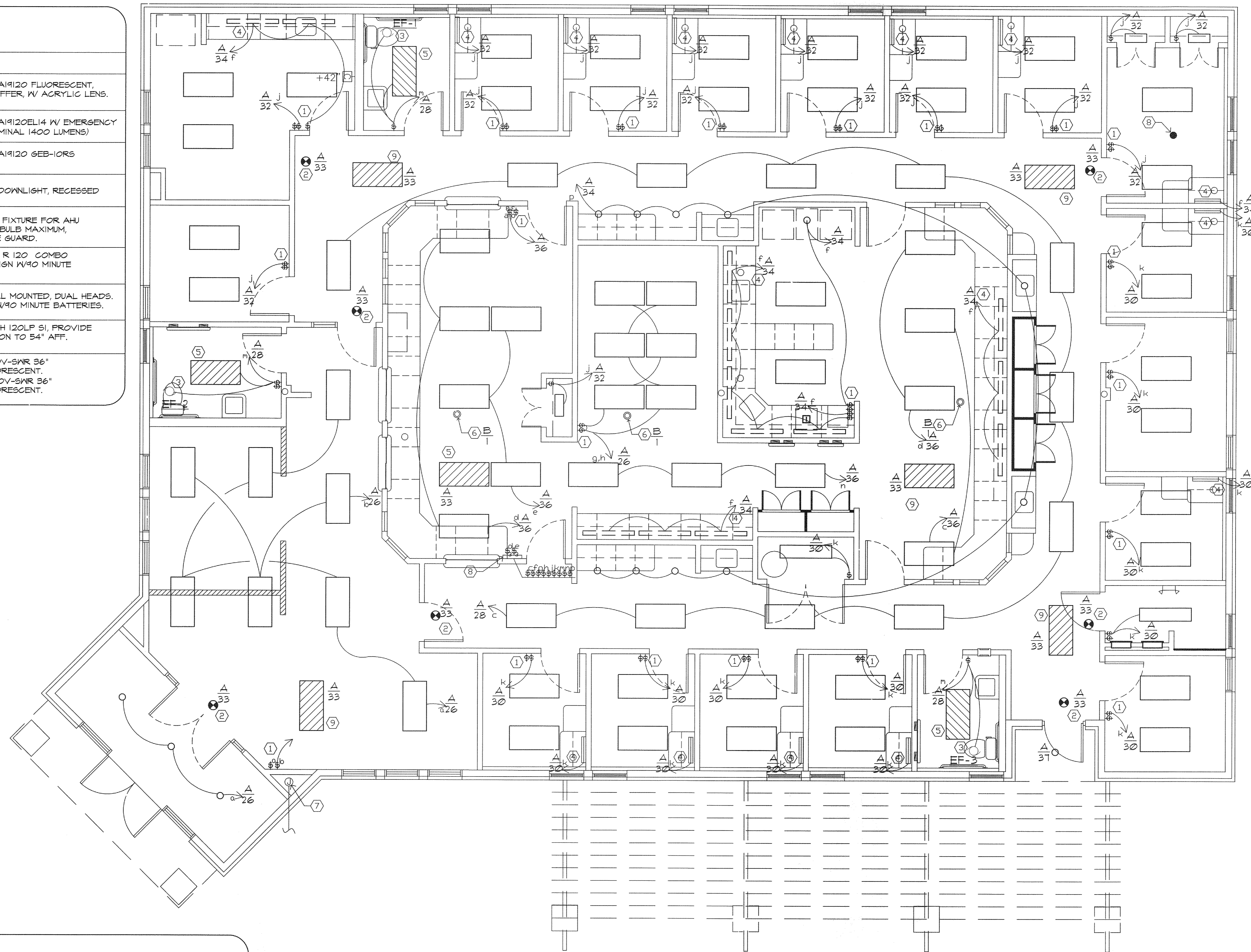
MARK		VOLT	LAMPS	DESCRIPTION
A		120	(2) 32W T8	LITHONIA, 26T-292-A19120 FLUORESCENT, 2X4 RECESSED TROFFER, W/ ACRYLIC LENS.
AE		120	(2) 32W T8	LITHONIA, 26T-292-A19120EL14 W/ EMERGENCY BATTERY PACK (NOMINAL 1400 LUMENS)
B		120	(2) 32W T8	LITHONIA, 6T8-292-A19120 GEB-10RS
C		120	18W	LITHONIA, LP3V: 3" DOWNLIGHT, RECESSED CAN FIXTURE.
D		120	75W	PORCELIN BASE A19 FIXTURE FOR AHU MAINTENANCE. 75W BULB MAXIMUM, PROVIDE WITH CASE GUARD.
EX		120	INTEGRAL	LITHONIA, HQM P W I R 120 COMBO EMERGENCY /EXIT SIGN W/90 MINUTE BATTERY BACK-UP.
EM		120	INTEGRAL	LITHONIA, ELM2, WALL MOUNTED, DUAL HEADS. EMERGENCY LIGHT W/90 MINUTE BATTERIES.
F		120	INTEGRAL	LITHONIA, CUC 14T8PH 120LP S1, PROVIDE FULL CHAIN EXTENSION TO 54" AFF.
L24		120	(1) 25WT8	LITHONIA, 2UC-IT-120V-SWR 36" UNDERCOUNTER FLUORESCENT.
L36		120	(1) 25WT8	LITHONIA, 2UC-25-120V-SWR 36" UNDERCOUNTER FLUORESCENT.

NOTES BY SYMBOL

- FOR LIGHT FIXTURES IN THIS ROOM, PROVIDE DUAL SWITCHING FOR 50% UNIFORM REDUCTION OF LIGHTING LEVEL.
- TYPE 'EX' EMERGENCY LIGHT/EXIT COMBO TO BE PROVIDED WITH 90 MIN. EMERGENCY BATTERY PACK CIRCUIT ALL ON CIRCUIT A-33.
- INTERLOCK CEILING MOUNTED EXHAUST FANS EF's 1, 2 & 3 WITH LOCAL LIGHT CIRCUITS AND SWITCHES. FANS ARE TO BE PROVIDED AND INSTALLED BY THE MECHANICAL CONTRACTOR AND WIRED BY THE ELECTRICAL CONTRACTOR. SEE MECHANICAL EQUIPMENT SCHEDULE, SHEET M2, FOR ADDITIONAL INFORMATION.
- COORDINATE LOCATION OF UNDERCABINET LIGHT WITH EQUIPMENT BELOW. UNDERCOUNTER LIGHTS SHALL BE INSTALLED IN ALL EXAM ROOMS AND SWITCHED WITH THE MAIN LIGHT SWITCH IN THOSE ROOMS. UNDERCOUNTER LIGHTS SHALL BE INSTALLED IN ANY OTHER AREAS WITH UPPER CABINETS AND SHALL BE SWITCHED SEPARATELY IN THOSE LOCATIONS.
- EMERGENCY LIGHT FIXTURES ARE TO HAVE TWO CIRCUITS. THE SWITCHED CIRCUIT SHALL BE WIRED TO THE CIRCUIT INDICATED. THE BATTERY BACK-UP SHALL BE WIRED TO CIRCUIT A-33 (24-HOUR CIRCUIT) AND SHALL ENGAGE THE FIXTURE WHEN THAT CIRCUIT IS INTERRUPTED.
- PROVIDE A19 TYPE PORCELIN BASED LIGHT FIXTURE, IN ATTIC SPACE ABOVE FOR AHU MAINTENANCE. LOCATE FIXTURE ABOVE AHU SERVICE AREA. PROVIDE LIGHT SWITCH AT POINT OF CEILING ACCESS. PROVIDE 3-WAY SWITCHING IF THERE ARE TWO CEILING ACCESS HATCHES.
- EXTEND CONDUIT AND CONDUCTORS TO MONUMENT SIGN. CIRCUIT VIA TIME CLOCK. VERIFY LOCATION.
- MASTER SWITCH PANEL.
- 24-HOUR CIRCUIT.

MISC. FIXTURE SCHEDULE

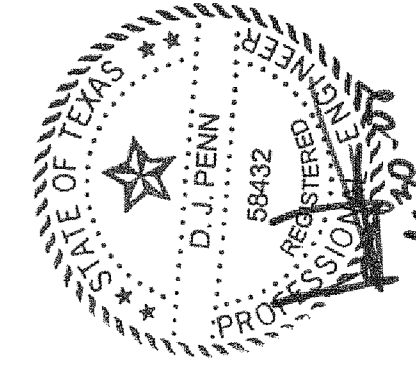
SYMBOL	EQUIPMENT	DESCRIPTION
	MASTER SWITCHES	PROVIDE ROW OF SWITCHES, MOUNTED 48" AFF TO CONTROL COMMON AREA LIGHTING AS INDICATED ON PLANS. LOWER CASE LETTERS INDICATED WHAT CIRCUITS ARE TO BE SWITCHED AT THIS LOCATION.
	EXHAUST FAN	PER EXHAUST FAN SCHEDULE, SHEET M2.



PLAN NORTH
1 LIGHTING PLAN AND DETAILS
 SCALE: 1/4" = 1'-0"

01-24-08 OWNER REVISIONS

CONTRACTOR SHALL VERIFY ALL DIMENSIONS AT THE JOB SITE AND NOTIFY THE ARCHITECTS OF ANY DIMENSIONAL ERRORS, OMISSIONS OR DISCREPANCIES BEFORE BEGINNING OR FABRICATING ANY WORK. DO NOT SCALE DRAWINGS.



linear!
 the architecture of Kermey Brundige and Young
 5005 W. Royal Lane, Suite 144
 Fort Worth, TX 76105
 Phone: 972.929.9226
 Fax: 972.929.9061
 info@linear-architecture.com

COOK CHILDREN'S
 PRIMARY CARE CLINIC
 FT. WORTH, TX

JOB NUMBER
07.210

SHEET TITLE
LIGHTING PLAN AND DETAILS

SHEET NUMBER
E1

DATE OF ORIGINAL ISSUE
29 NOVEMBER 2007