

# Mini Tutorial: Selections

In the past year or so there have been more and more tutorials where the author has created a bunch of selections for download for completing the tutorial. In some cases, the author tells you what to do with the selections once downloaded as in where to save, etc, and in other cases the author assumes you will know what to do with them.

However, in addition to there being novice Paint Shop Pro users, there are also a lot of new computer users as well who don't know what to do with the selections once downloaded nor how to open them once saved to a folder.



Unlike images such as .jpgs, .gifs, PSP files or tubes, you can't just open a selection file. This tutorial is more of a computer lesson than a PSP lesson. Keep in mind that I don't know what operating system you are using or how your computer is set up. At best, I can only point you in the right direction so that you won't have problems with the "how do I open a selection" question again.

## *PSP version and tools used*

Paint Shop Pro, any version

### Windows

Windows Explorer

Create new folder

Rename new folder


### Paint Shop Pro

Selections Menu

Save to disk

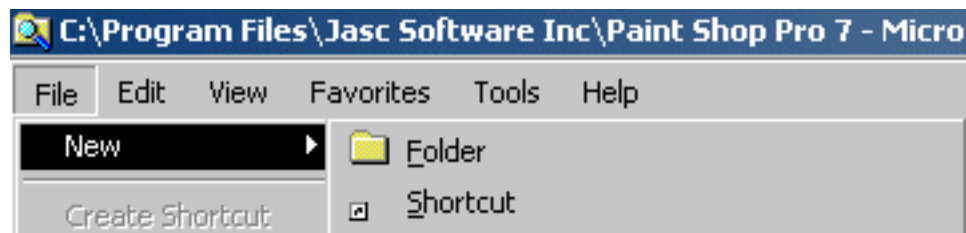
Load from disk

Chances are, if you are reading this tutorial, you have tried to open a selection in PSP without using the load from disk option. You can't merely open up a selection from a folder and hope that PSP will open it or you will get an error message along the lines of "The specified file cannot be identified as a supported type." So, here's what you do:

**Step 1:** If you haven't done so already, you need to create a folder where you can save selections. This will later work for any selections that you download or later create yourself. Go to Start, Programs, Windows Explorer. The Windows Explorer icon should look like this: 

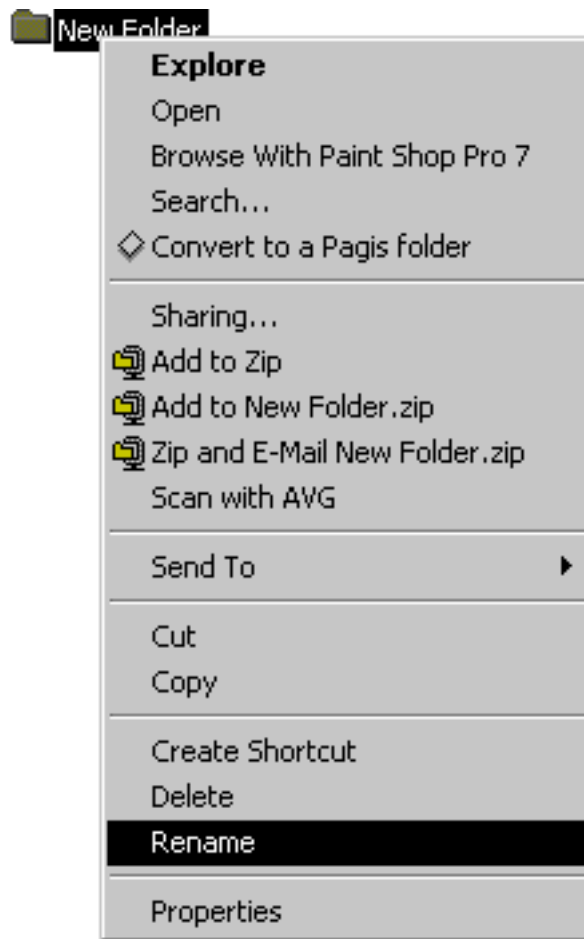
**Step 2:** Browse your hard drive (normally default drive is labeled "C") for the Program Files Folder, click on the little plus marks. Find the Jasc Software inc folder. Keep clicking on the plus marks until you open up the PSP7 Folder. It should now be highlighted.

**Step 3:** Go to the top of your screen to File , New, Folder



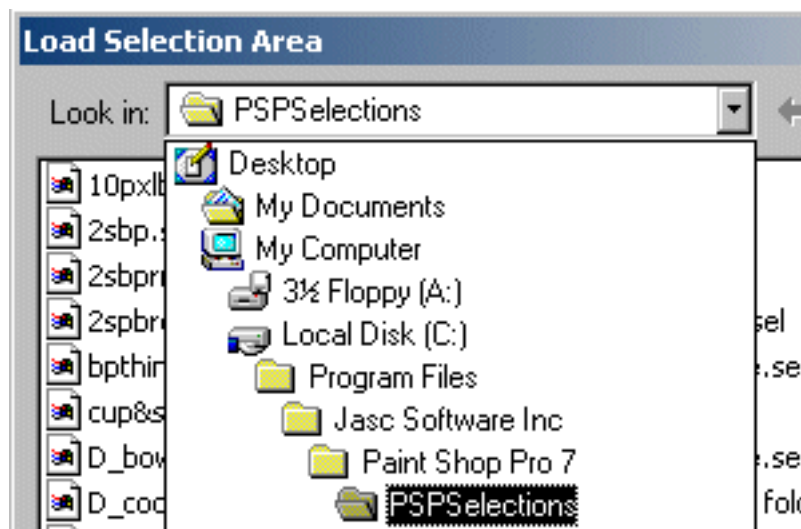
Within the larger window on the right side of your screen a little folder icon should now be showing called "New Folder".

**Step 4:** Now you need to rename this folder. Using your mouse, right click on the "New folder" so that a menu similar to the one shown to the right appears. Your menu will not look exactly as mine does. You should now be able to rename the folder. I called mine PSPSelections, but just selections will suffice. What is important is that you remember what you named the new folder.



**Step 5:** If you haven't already opened PSP, do so now. Hopefully, the author of the tutorial has already told you what size file you should have started with, i.e. "Open up a new image 150 by 150 transparent background." I am going to assume that you have a program such as WinZip that unzips files and you know how to use it. Much like you just created this new folder, you can browse to it and extract selection files from your un-zipping program or save selections you create into it within PSP.

**Step 6:** To open selections in PSP, go to Selection, Load from disk. Browse to the folder you created and you should now see the names of the selections you previously saved. Once you have told PSP where to find selections, you won't have to tell it again unless you move your selections folder. You also should not get the "supported type" error message again.



This tutorial original located:  
[http://www.geocities.com/pixel\\_tickler/mini\\_selections.htm](http://www.geocities.com/pixel_tickler/mini_selections.htm)

Updated 06/14/02

Copyright © 1999-2002 All rights reserved.

All graphics on this site are property of Pixel-Tickler and are protected under US and International copyright laws and may NOT be copied, stored or offered for sale without written permission from the owner unless so stated otherwise.

PSP tutorial groups may use these tutorials as part of their weekly lessons. If you have any questions regarding the content or images used on this site, drop me a note at

<news://news.annexcafe.com/annexcafe.psp.tutorials>. I browse there regularly.