

# Managing Plugins

My preference is to set up your plugin folders outside of the PSP directory instead of within it. There are two good reasons to do this:

1. When a new version of PSP comes out, all you have to do is point the new version to the folders you have already established rather than having to move your plugin folders from the old PSP directory to the new PSP directory.
2. If you have other graphic editing applications that can use the same filters, you can find your plugins folders easier than having to search for them.



If you've already set up your folders within the PSP directory, you haven't done anything wrong; they won't behave any differently.

PSP allows you to establish up the three locations where you can install your plugins. I have named my three folders rather simply: Plugins 1, Plugins 2, Plugins 3. What each contains:

- Plugins 1: All plugins that I have purchased with the exception of filters purchased from Flaming Pear.
- Plugins 2: All [Flaming Pear](#) filters. I've done this mainly because of BladePro and SuperBlade Pro. Not only have I made a lot of presets for each of these, I've collected several through the years and it has been easier for me to keep all of the Flaming Pear filters here.

- Plugins 3: All the freebies.


Additionally, I have subfolders within each plugin folder with the name of the company/ person that created the plugin when I know this information.

Some filters require installation, some you can just extract into the desired folder while some must be converted first. Andrew's filters and Filter Factory filters are ones that require conversion before you can install them. There's a great tutorial on how to convert those filters [here](#).

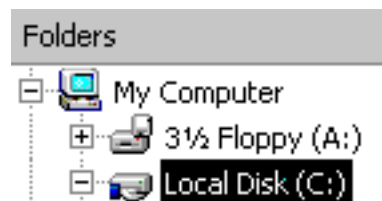
Remember: When you install a new filter and PSP is already open, you have to shut it down and then reopen it BEFORE you can see the filter in your effects/plugin filters folder(s). If you have more than one filter from a company such as Flaming Pear, all of those filters will be in the Flaming Pear folder. Others like the [Cybia](#) filters will appear in each grouping that they have designated.

## **Mini Tutorials for the Newbie**

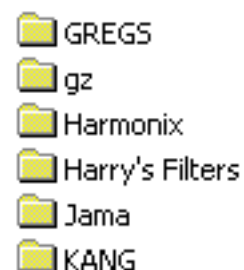
### **Part 1: How to Create Plugin Folders**

**Step 1:** Click your start button, go to Accessories/ Windows Explorer . This will open up your computer's folders. If they don't automatically expand, click on the arrow to expand then so that you can see your hard drive, which normally is your C drive. The left column contains your file folders. The right column will tell you what is in each folder. Note: unless you are experienced user, it's usually not a good idea to move any of these folders around or delete anything that doesn't look necessary.

**Step 2:** Make certain that you have highlighted your c drive, and then go to File/New Folder. This new folder will appear at the bottom of the right column and now is the time to rename it. All you have to do is hit your backspace key and then you can type in the new name. Do this twice more until you have created all three plugin folders. You may not need all three yet, but you won't have to create them later.



**Step 3:** When you are ready to set up subfolders for your presets, you can add new folders to each plugin folder in much the same way as you did your three main folders. The image to the right is a partial screen shot of my Plugins 3 folder.

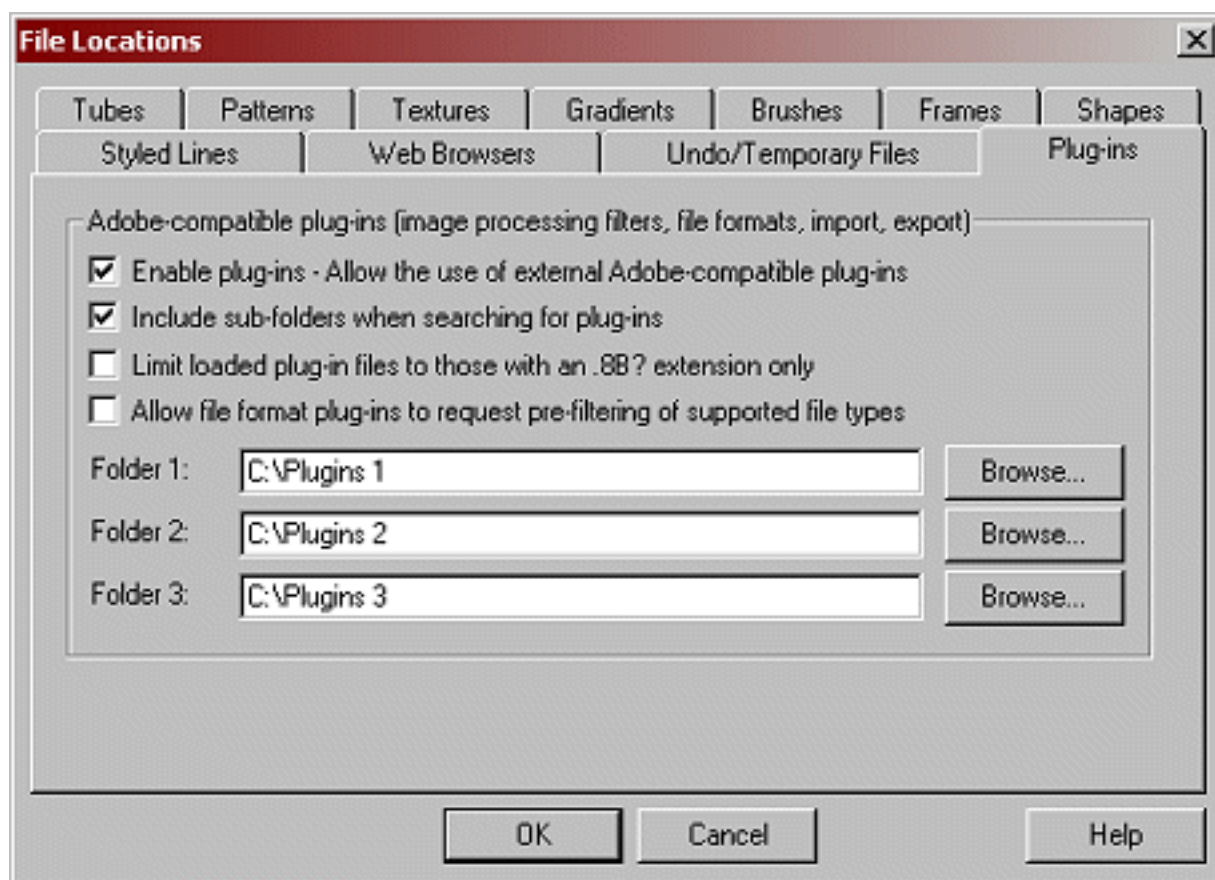


## Part 2: How to Set up PSP to find plugin folders

As long as PSP knows where to find them, it doesn't matter what folders store your plugins. Additionally, PSP will list them alphabetically in your Effects/ Plugin filters menus once PSP is open. Open up PSP and then go to File/ Preferences/ File Locations. If you haven't already pointed PSP anywhere then all three spaces may be blank. Hit the browse button to locate your plugin folders.



You'll need to do this for each row. Just hit okay after you are done.



This tutorial originally located at  
[http://www.geocities.com/pixel\\_tickler/managing\\_plugins2.htm](http://www.geocities.com/pixel_tickler/managing_plugins2.htm)

Updated 02/06/02

Copyright © 1999-2002 All rights reserved.

All graphics on this site are property of Pixel-Tickler and are protected under US and International copyright laws and may NOT be copied, stored or offered for sale without written permission from the owner unless so stated otherwise.

PSP tutorial groups may use these tutorials as part of their weekly lessons. If you have any questions regarding the content or images used on this site, drop me a note at

<news://news.annexcafe.com/annexcafe.psp.tutorials>. I browse there regularly.