

## Windows XP installation Instructions – Epson 1290



### A. Download the ICC file

1. Download the ICC profile from the email link that has been sent to you.
2. Copy the zip file to a known location (e.g. c:/downloads/)
3. Unzip the file to the system ICC color folder (c:/windows/system32/spool/driver/color/)

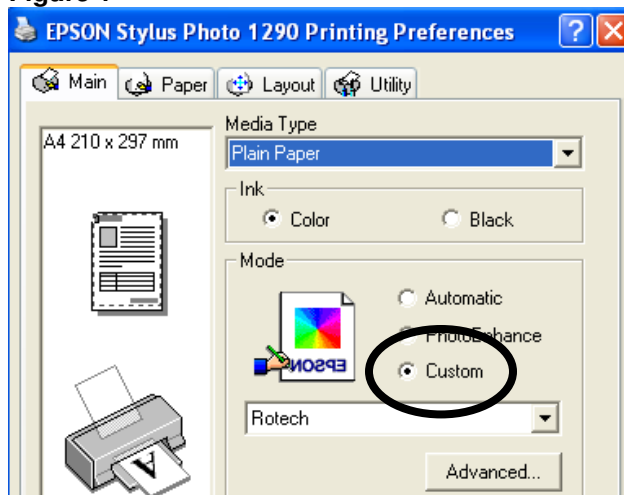
### B. Assign the ICC to your printer

1. Choose the printer from your system settings
2. Right-click on the printer and choose Properties
3. Choose Color Management from the showing window
4. Click on “Manual”
5. Click on “Add...”
6. A new window opens. This window shows all ICC profiles of the system. Choose now the installed ICC profile. (The profile should begin with: Rotech...) Click on “Open”
7. If you see the profile in the list your profile is installed correctly.
8. Click on “As Default ...”
9. Close this window.

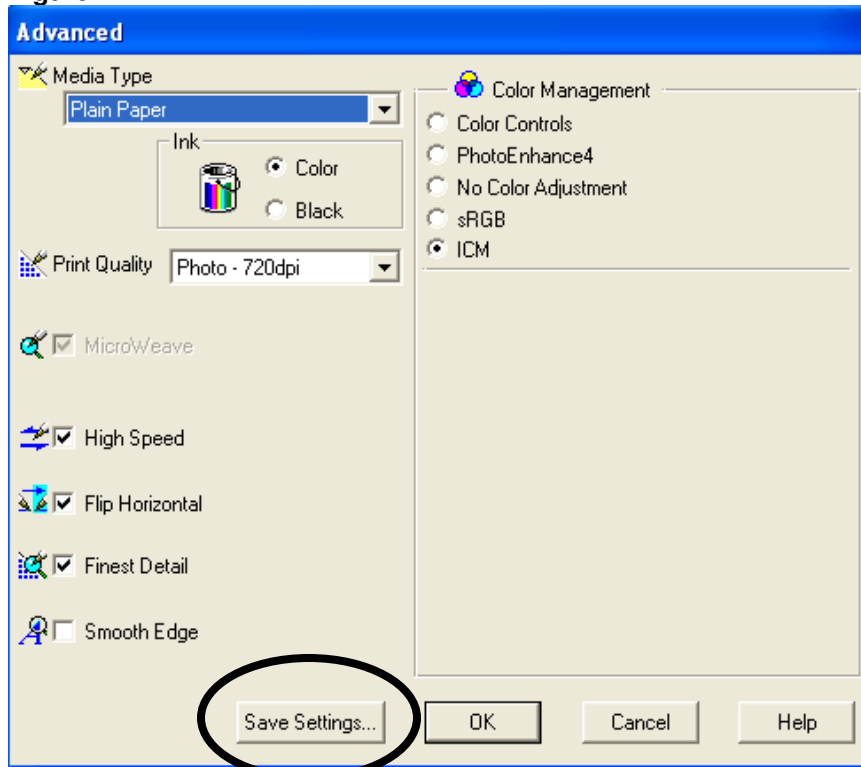
### C. Setup the printer for printing with Dye Sublimation inks

1. Click on START and then select PRINTERS AND FAXES.
2. Right-click on the printer and choose “Printing Preferences...”
3. In the main window place a dot in the “Custom” radio button (see figure 1) and click on “Advanced”
6. A new window opens. Setup all settings as follows and check with Figure 2  
Media Type: Plain Paper  
Color: Color  
Print Quality:720 dpi (“Fine” or similar on other drivers)  
Microweave: enabled (when available)  
Highspeed: enabled (when available)  
Flip horizontal: enabled (or similar)  
Finest details: enabled (when available)  
Edge Smoothing: disable enabled (when available)  
Color Management: ICM (**This is important! You won’t have correct results without this set on!**)
7. Click on “Save as...”
8. Name this setting (e.g. Rotech)

Figure 1



**Figure 2**



#### **D. Printing from your application**

As you have now installed the profile and setup your print preferences, the printing routine is always the same. The printer settings should now be set up as default and all you have to do is select "Print" from the "File" menu within your chosen application and make sure you have selected the Epson 1290 printer.

To check the settings click on "Properties". The properties of your printer will appear – make sure that "Rotech" is highlighted and there is a dot in the radio button next to "Custom".

#### **Corel Draw**

If you use Corel Draw then please refer to the separate user instructions for correct installation of this profile into this application.

Any questions please call 01202 893166/ 890766 or email [enquires@printerowners.co.uk](mailto:enquires@printerowners.co.uk)

