



**Noncompliance Recall: Civic Rear Seat Belt Buckles**  
(Supersedes 02-004, dated February 2002)

**BACKGROUND**

Seat belt buckles contain a lock bar that engages and locks the seat belt tongue to the buckle. On some 2000-01 Civics, the lock bars in the rear seat belt buckles were improperly made. This prevented the unlatching of some rear buckles during strength compliance tests performed by the U.S. National Highway Traffic Safety Administration. The affected rear seat belt buckles work properly and provide protection in a crash, but they may be difficult to unlatch after the crash.

**VEHICLES AFFECTED**

2000 Civic:

KG – From VIN 1HGEJ6...YL601933  
thru 1HGEJ6...YL601949

KX – From VIN 1HGEJ8...YL907148  
thru 1HGEJ8...YL907193

From VIN 1HGEM1...YL902101  
thru 1HGEM1...YL902160

2001 Civic:

KE – VIN 1HGEM2...IL600034

KK – From VIN 2HGES1...L750070  
thru 2HGES1...L750120

From VIN 1HGES1...L500004  
thru 1HGES1...L500224

**CUSTOMER NOTIFICATION**

All owners of affected vehicles should be mailed a notification of this recall. An example of the notification is at the end of this service bulletin.

**CORRECTIVE ACTION**

Inspect the assembly number on all three rear seat belt buckles, and replace any affected buckle.

**PARTS INFORMATION**

Refer to the Parts Catalog for the correct type and color of seat belt buckle and/or seat belt/retractor assembly.

**WARRANTY CLAIM INFORMATION**

**2000 Civic:**

OP#	Description	FRT
854529	Inspect the rear seat belt buckles, and center-punch the VIN	0.2
A	Add center rear seat belt buckle replacement	0.1
B	Add left rear seat belt buckle replacement	0.1
C	Add right rear seat belt buckle replacement	0.1
D	Add left and center rear seat belt buckle replacement	0.2
E	Add right and center rear seat belt buckle replacement	0.2
F	Add left and right rear seat belt buckle replacement	0.2
G	Add left, right, and center rear seat belt buckle replacement	0.3

**2001 Civic:**

OP#	Description	FRT
854531	Inspect the rear seat belt buckles, and center-punch the VIN	0.2
A	Add center rear seat belt buckle replacement	0.1
B	Add left rear seat belt buckle replacement	0.6
C	Add right rear seat belt buckle replacement	0.1
D	Add left and center rear seat belt buckle replacement	0.7
E	Add right and center rear seat belt buckle replacement	0.2
F	Add left and right rear seat belt buckle replacement	0.9
G	Add left, right, and center rear seat belt buckle replacement	0.9

Failed Part: P/N 04827-S01-A00ZA

Defect Code: 5BC

Contention Code: L46

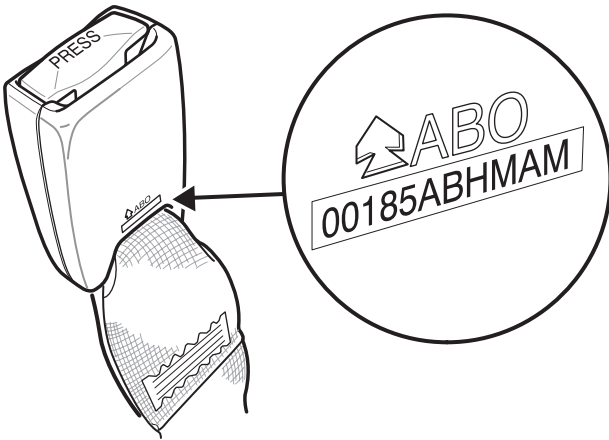
## INSPECTION PROCEDURE

1. Push the upholstery down so you can see the number stamped on each of the rear seat belt buckles.
2. Look for the assembly number on the back of each buckle. You may need a light and a magnifying glass to see the number.
  - If any of the buckles have one of these assembly numbers, go to **REPAIR PROCEDURE**.

Assembly Numbers:

00185ABHMAM  
00186AAHMAM  
00187AAHMAM  
00246ABHMPM  
00247ABHMAM  
00248ABHMAM

- If none of the buckles have an affected assembly number, go to step 3.



3. Center-punch a completion mark above the eighth character of the engine compartment VIN, then return the vehicle to the customer.

Center-punch here.

1HGXXXXXXXXXXXXXX

## REPAIR PROCEDURE

NOTE: Be careful not to scratch the interior.

1. Replace the affected rear seat belt buckle(s).

NOTE: To replace the left rear buckle on a 2001 Civic, you also need to replace the center seat belt/retractor assembly.

- 2000 Civic: Refer to the 2000 Civic Shop Manual.
  - 2001 Civic: Refer to the 2001 Civic Shop Manual.
2. Center-punch a completion mark above the eighth character of the engine compartment VIN, then return the vehicle to the customer.

Center-punch here.

1HGXXXXXXXXXXXXXX

**Example of Customer Letter**

May 2002

**Noncompliance Recall: 2000–01 Civic  
Rear Seat Belt Buckles**

Dear Civic Owner:

This notice is sent to you advise you of a recall that may affect your vehicle.

**What is the reason for this notice?**

Honda Motor Co., Ltd., has determined that certain 2000–01 model year Civics do not comply with U.S. Federal Motor Vehicle Safety Standard 209, Seat Belt Assemblies. Some rear seat belts failed to unlatch after buckle strength compliance testing conducted by the U.S. National Highway Traffic Safety Administration. An improperly manufactured lock bar inside the buckle caused this failure.

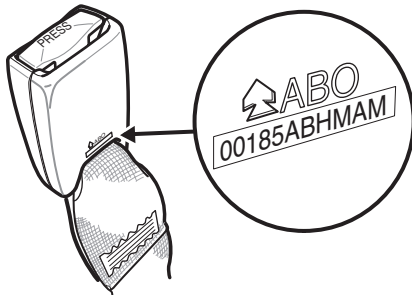
The rear seat belts in your car will work properly and provide protection in a crash, but you may experience some difficulty unfastening the belt after a crash.

**What should you do?**

*Inspect Your Seat Belt Buckles*

As soon as possible, check all three rear seat belt buckles to see if any are affected by this recall. You will find an assembly number stamped on the back of the buckle. The assembly number is difficult to read; you may need a flashlight and a magnifying glass to see it. Buckles that need replacement are stamped with one of the numbers shown below.

**View from Back Side of Buckle**



00185ABHMAM, 00186AAHMAM, 00187AAHMAM,  
00246ABHMPM, 00247ABHMAM, 00248ABHMAM

*If Your Seat Belt Buckles Need Replacement*

If any of the rear buckles are marked with an affected assembly number, you should promptly contact any authorized Honda automobile distributor/dealer and make an appointment to have the buckle(s) replaced, free of charge. Parts are now available. This repair takes about an hour, but please plan to leave your vehicle for half a day to allow the distributor/dealer flexibility in scheduling.

*If You Need Help With the Seat Belt Inspection*

If you cannot clearly see the buckle assembly number, or if you are not comfortable inspecting the buckles yourself, please contact any authorized Honda distributor/dealer and make an appointment for an inspection.

**What to do if you feel this notice is in error.**

Our records show that you are the current owner of a 2000–01 Civic involved in this recall. If you no longer own this vehicle, or if the name/address information is incorrect, please notify your local distributor/dealer.

**(Insert distributor name, address, and telephone number here.)**

**If you have questions.**

If you have questions about this notice, or need assistance with contacting a Honda distributor/dealer, please contact **(insert distributor name and telephone number here.)**

We apologize for any inconvenience this may cause you.

Sincerely,

**(Insert distributor name here.)**