



Applies To: **2001-02 Civic EX – ALL**
2003 Civic EX and LX – ALL

June 25, 2004

Driver's Seat Rocks

(Supersedes 01-057, dated November 18, 2003)

SYMPTOM

The driver's seat rocks back and forth during normal driving.

PROBABLE CAUSE

Worn bushings in the height adjustment mechanism.

CORRECTIVE ACTION

Install new seat bushings, nuts, and spacers.

PARTS INFORMATION

Seat Link Bushing (six required):

P/N 90502-S3N-013, H/C 6690440

8/18 mm Nut Washer (six required):

P/N 90321-S84-999, H/C 7679780

Spacer (four required):

P/N 90503-S3N-003, H/C 6852578

WARRANTY CLAIM INFORMATION

In warranty: The normal warranty applies.

OP#	Description	FRT
851133	Install new seat bushings, nuts, and spacers	0.7
851092	Cruise control learn on 2001 2-door models up to VIN 1L016502	0.3

Failed Part: P/N 81536-S5P-A71
H/C 6526230

Defect Code: 00503

Symptom Code: 07302

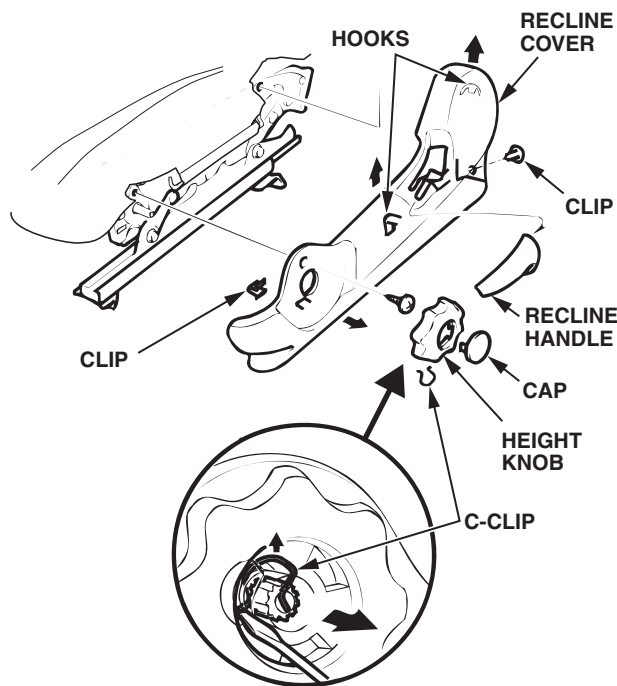
Template ID: 01-057A

Skill Level: Repair Technician

Out of warranty: Any repair performed after warranty expiration may be eligible for goodwill consideration by the District Parts and Service Manager or your Zone Office. You must request consideration, and get a decision, before starting work.

REPAIR PROCEDURE

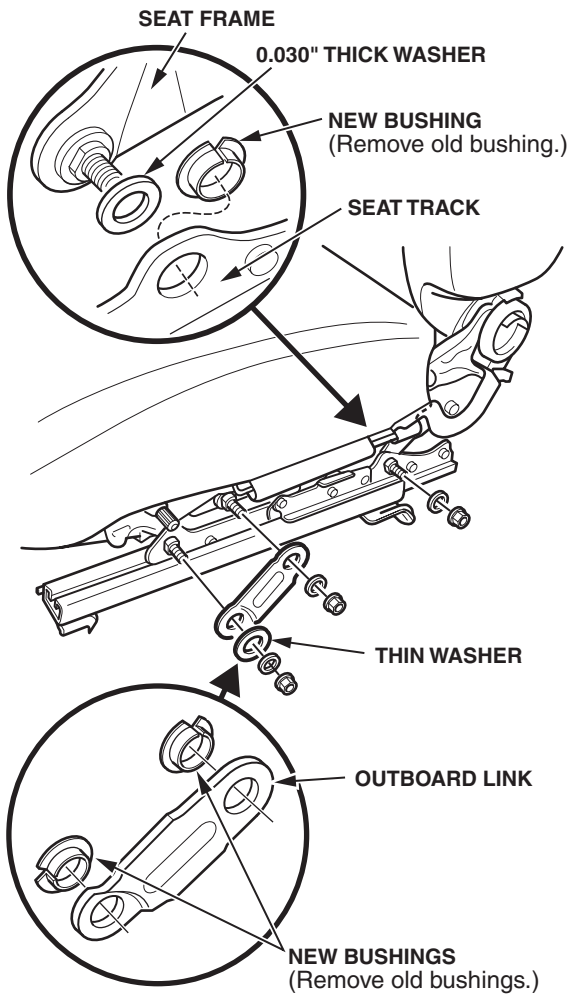
1. Make sure you have the anti-theft code for the radio, then write down the frequencies for the preset buttons.
2. Disconnect the negative cable from the battery, and wait at least 3 minutes before beginning work.
3. Remove the driver's seat from the vehicle. Refer to page 20-109 of the 2001-04 Civic Service Manual.
4. Remove the recline handle by pulling it forward.



5. Remove the center cap from the height knob. Remove the C-clip that holds the height knob. Then remove the knob.
6. Remove the screw and clips from the recline cover. Remove the recline cover.

- Remove and discard the three nuts, and remove the washers from the outboard link and from the outboard seat track.

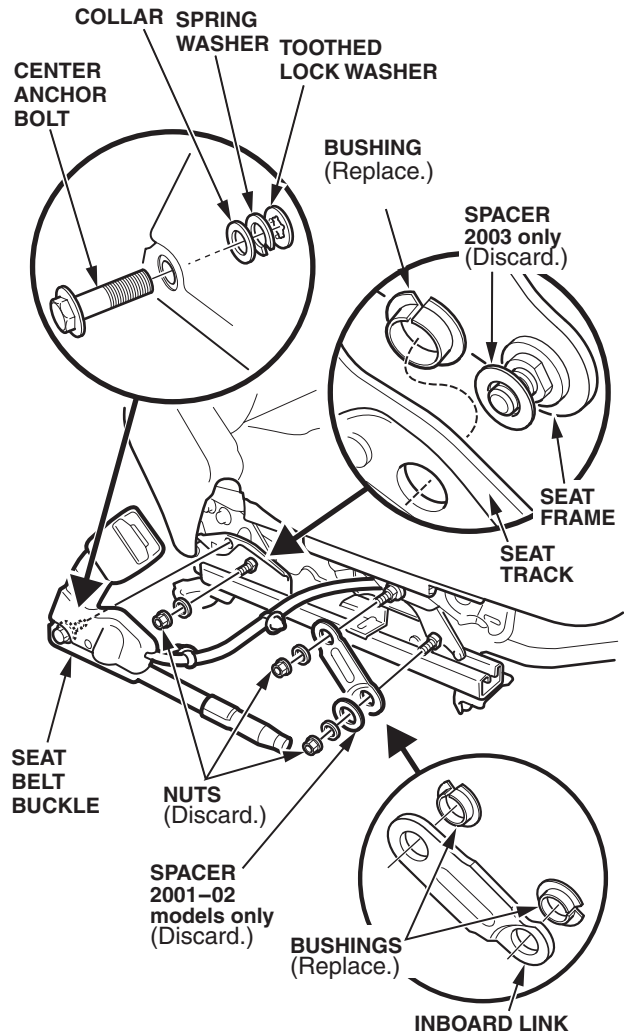
Outboard Side:



- 2001-02 Models:* Remove and discard the spacer from the outboard link.
- Remove and discard the old bushings.
- Install the new bushings, and add one spacer as shown.
- Reassemble the outboard side of the seat track in the reverse order of removal using new nuts. Torque the nuts to 24 N·m (17 lb-ft).
- Install the recline cover, height knob, and recline handle.

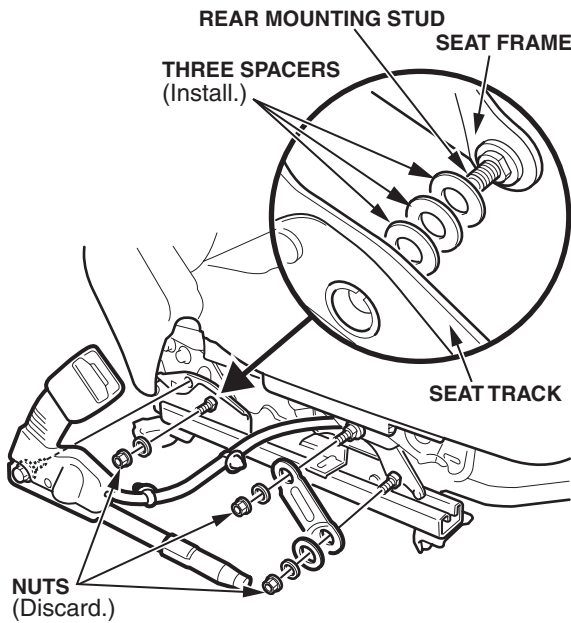
- Remove the seat belt buckle.

Inboard Side:



- Remove the three nuts and washers from the inboard link and the inboard seat track. Remove and discard the old bushings.
- 2001-02 Models:* Remove and discard the spacer from the inboard link.
- Install the new bushings.

17. Install three spacers on the rear mounting stud for the seat track.



18. Reassemble the inboard side of the seat track in the reverse order of removal using new nuts. Torque the seat track mounting nuts to 24 N·m (17 lb-ft). Torque the seat belt buckle mounting bolt to 32 N·m (23 lb-ft).
19. Install the seat.
20. Confirm that the problem is resolved. If the driver's seat still rocks, look for other causes.
21. Reconnect the battery.
22. Turn the ignition switch to ON (II), and check the SRS indicator. If the indicator comes on for 6 seconds and then turns off, the SRS is OK. If the indicator stays on, check for codes, and do normal troubleshooting.
23. Enter the anti-theft code for the radio, and then enter the customer's radio station presets.
24. Set the clock.
25. Do the ECM/PCM idle learn procedure:
- Make sure all electrical items (A/C, audio unit, defogger, lights, etc.) are off.
 - Start the engine and let it warm up to its normal operating temperature (the cooling fans cycle twice).
 - Let the engine idle (throttle fully closed and all electrical items off) for 10 minutes.
26. For 2001 2-doors up to VIN 1L016502, do the cruise control learn procedure. Drive the vehicle for 10 minutes at over 40 mph with the cruise control on.