

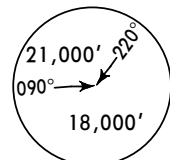
SPZO/CUZ
Tnte Fap ALEJANDRO
VELAZCO ASTETE INTL

JEPPesen
5 MAY 06 **10-2**

CUZCO, PERU
STAR

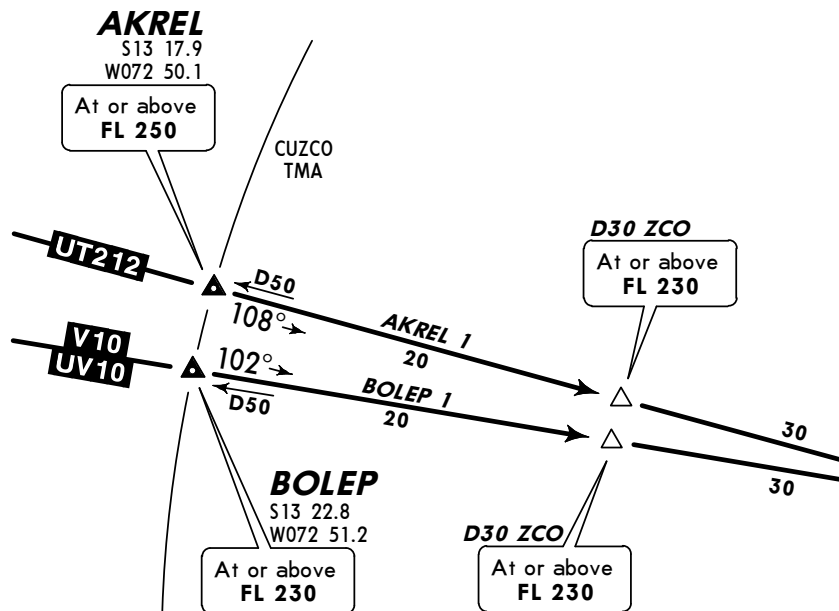
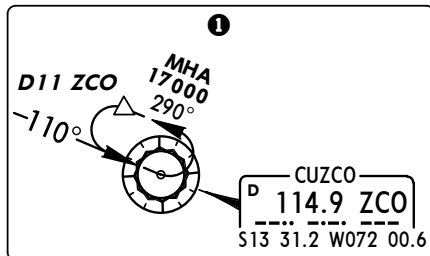
*ATIS 127.0	Apt Elev 10860'	Alt Set: hPa Trans level: By ATC Trans alt: 18000' In case of DME failure, the minimum holding altitude will be FL 230 and the outbound leg 1.5 minutes.
------------------------------	----------------------------------	---

AKREL 1, BOLEP 1 ARRIVALS
SPEED MAX 250 KT



MSA ZCO VOR
18,000'
within 10 NM

URCOS
D 115.6 URC
S13 39.0 W071 35.2



Direct distance from ZCO to:
Tnte Fap Alejandro Velazco Astete Intl **4 NM**

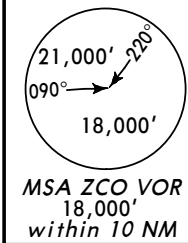
STAR	ROUTING
AKREL 1	Descend from route UT-212 on ZCO R-288. Proceed on ZCO R-288 and continue in accordance with ATC instructions.
BOLEP 1	Descend from routes V-10/UV-10 on ZCO R-282. Proceed on ZCO R-282 and continue in accordance with ATC instructions.

SPZO/CUZ
Tnte Fap ALEJANDRO
VELAZCO ASTETE INTL

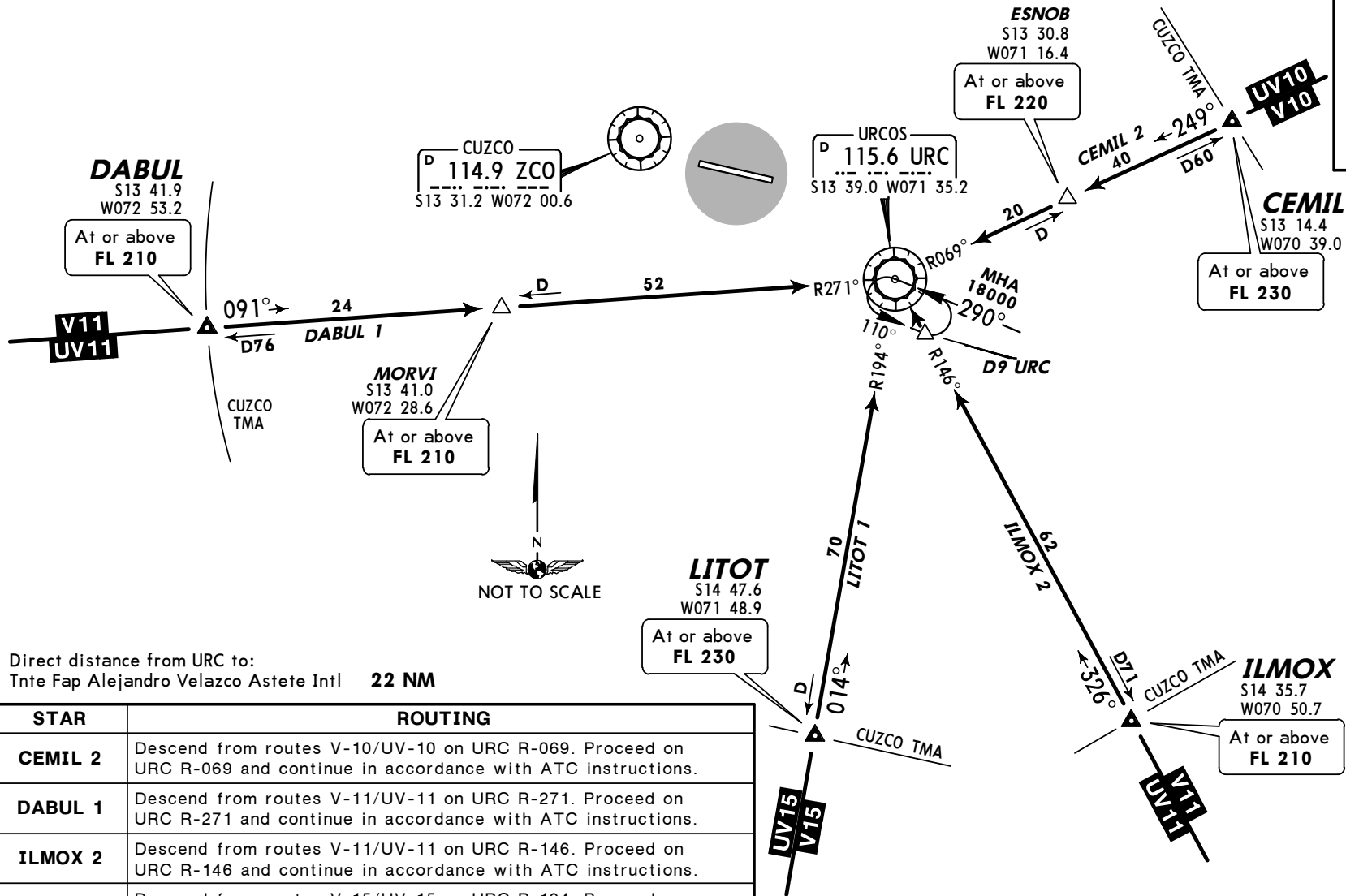
JEPPESEN
5 MAY 06 (10-2A)

CUZCO, PERU
STAR

*ATIS 127.0	Apt Elev 10860'	Alt Set: hPa Trans alt: 18000' In case of DME failure, the minimum holding altitude will be FL 230 and the outbound leg 1.5 minutes.
-----------------------	---------------------------	---



CEMIL 2, DABUL 1, ILMOX 2, LITOT 1 ARRIVALS
SPEED MAX 250 KT



STAR	ROUTING
CEMIL 2	Descend from routes V-10/UV-10 on URC R-069. Proceed on URC R-069 and continue in accordance with ATC instructions.
DABUL 1	Descend from routes V-11/UV-11 on URC R-271. Proceed on URC R-271 and continue in accordance with ATC instructions.
ILMOX 2	Descend from routes V-11/UV-11 on URC R-146. Proceed on URC R-146 and continue in accordance with ATC instructions.
LITOT 1	Descend from routes V-15/UV-15 on URC R-194. Proceed on URC R-194 and continue in accordance with ATC instructions.

SPZO/CUZ
Tnte Fap ALEJANDRO
VELAZCO ASTETE INTL

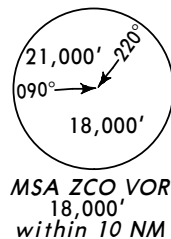
23 SEP 05
10-2A-1

CUZCO, PERU
STAR

*ATIS
127.0
Apt Elev
10860'

Alt Set: hPa Trans level: By ATC Trans alt: 18000'
1. In case of DME failure, the minimum holding altitude will be
FL 230 and the outbound leg 1.5 minutes.
2. For arrival from Lima refer to SPZO 10-2.

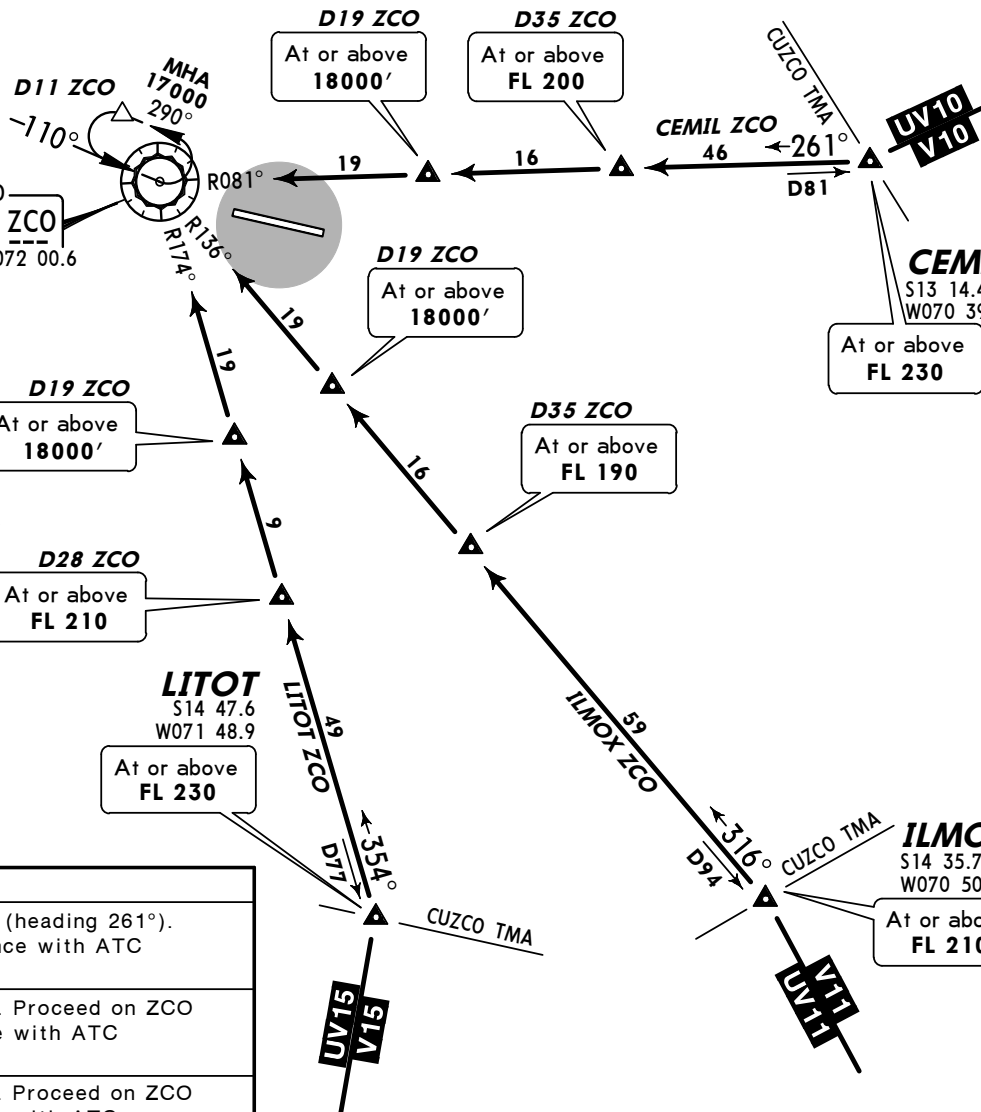
CEMIL ZCO, ILMOX ZCO, LITOT ZCO ARRIVALS



MSA ZCO VOR
18,000'
within 10 NM

CEMIL
S13 14.4
W070 39.0
At or above
FL 230

ILMOX
S14 35.7
W070 50.7
At or above
FL 210



ALTERNATE ARRIVALS
IN CASE OF FAILURE OF URC VOR.
EFFECTIVE BY NOTAM.

Direct distance from ZCO to:
Tnte Fap Alejandro Velazco Astete Intl **4 NM**

STAR	ROUTING
CEMIL ZCO	Descend from V-10/UV-10 on ZCO R-081 (heading 261°). Proceed to ZCO and continue in accordance with ATC instructions.
ILMOX ZCO	Descend from V-11/UV-11 on ZCO R-136. Proceed on ZCO R-136 to ZCO and continue in accordance with ATC instructions.
LITOT ZCO	Descend from V-15/UV-15 on ZCO R-174. Proceed on ZCO R-174 to ZCO and continue in accordance with ATC instructions.

SPZO/CUZ
Tnte FAP ALEJANDRO
VELAZCO ASTETE INTL

JEPPESSEN
31 DEC 04 **10-3**

CUZCO, PERU
SID

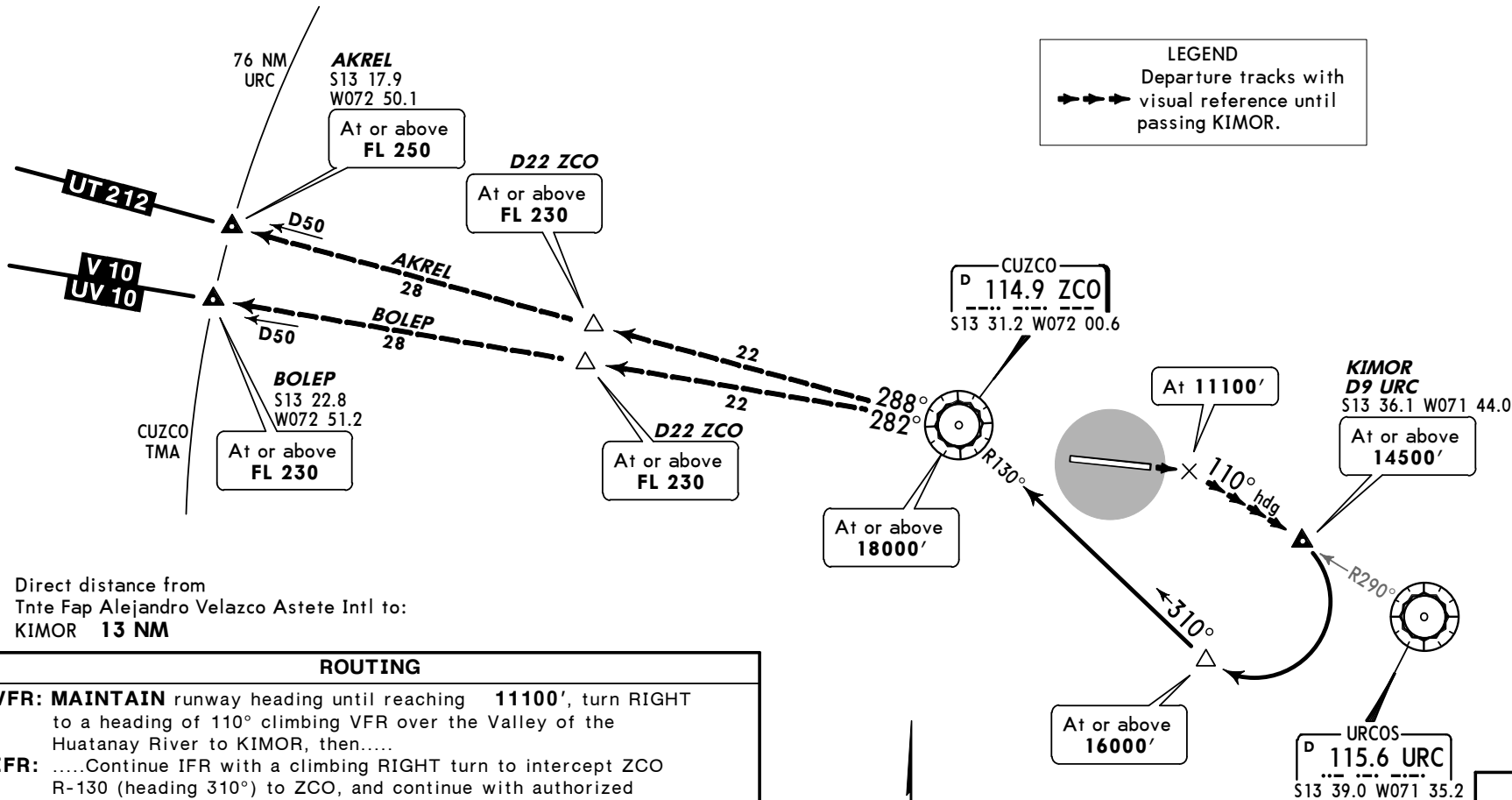
Apt Elev
10860'

Trans level: By ATC Trans alt: 18000'

CUZCO 1 DEPARTURE

MSA ZCO VOR
18,000'
within 10 NM

LEGEND
Departure tracks with
visual reference until
passing KIMOR.



Direct distance from
Tnte Fap Alejandro Velazco Astete Intl to:
KIMOR **13 NM**

ROUTING

VFR: MAINTAIN runway heading until reaching **11100'**, turn **RIGHT** to a heading of **110°** climbing VFR over the Valley of the Huatanay River to KIMOR, then.....
IFR:Continue IFR with a climbing **RIGHT** turn to intercept ZCO R-130 (heading **310°**) to ZCO, and continue with authorized transition.

TRANSITIONS

AKREL	Climbing LEFT turn to proceed on ZCO R-288 to AKREL. Continue climbing on route UT-212.
BOLEP	Climbing LEFT turn to proceed on ZCO R-282 to BOLEP. Continue climbing on routes V-10/UV-10.



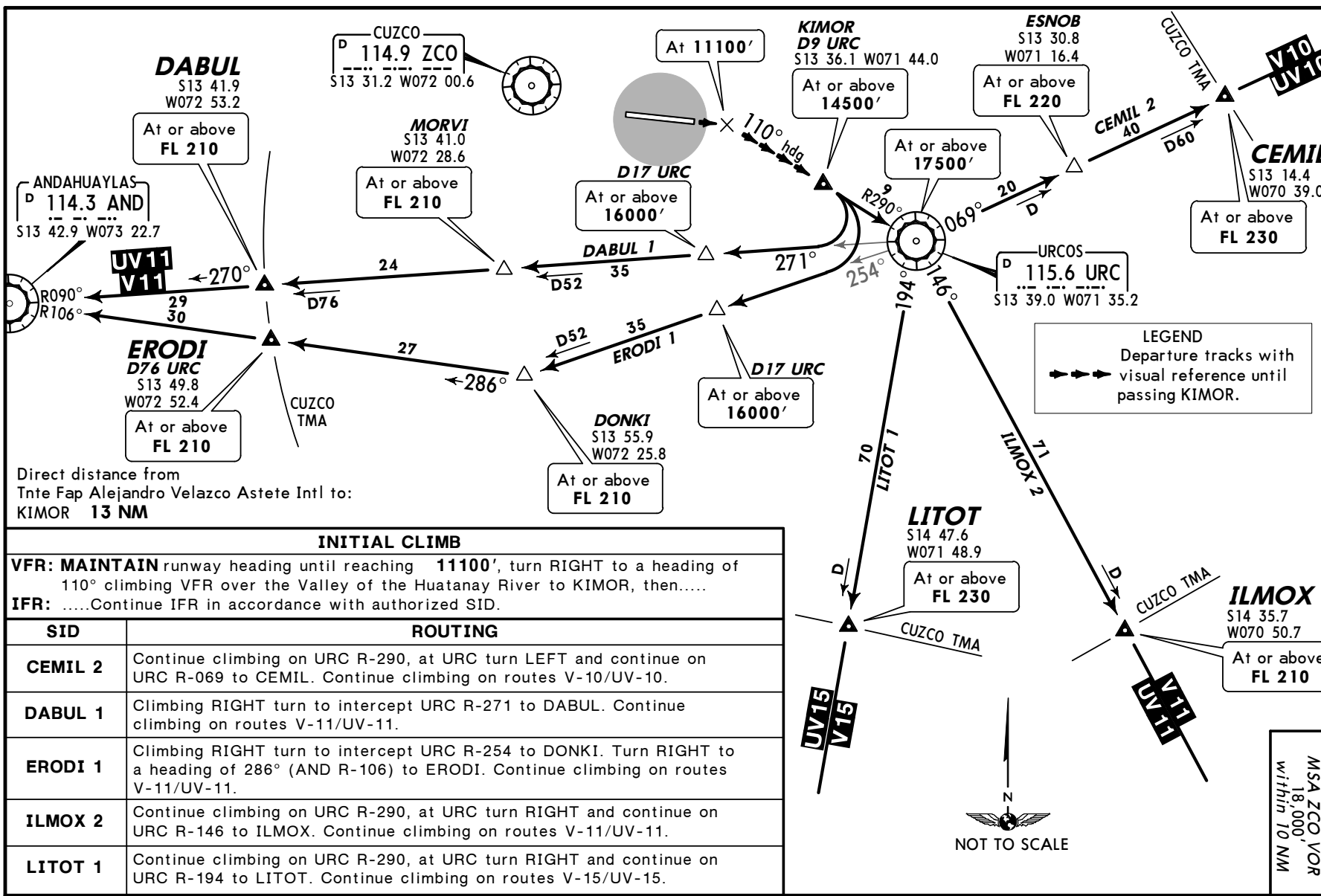
SPZO/CUZ
Tnte FAP ALEJANDRO
VELAZCO ASTETE INTL

JEPPesen
31 DEC 04 **10-3A**

CUZCO, PERU
SID

Apt Elev
10860'
Trans level: By ATC Trans alt: 18000'

**CEMIL 2, DABUL 1, ERODI 1,
ILMOX 2, LITOT 1 DEPARTURES**



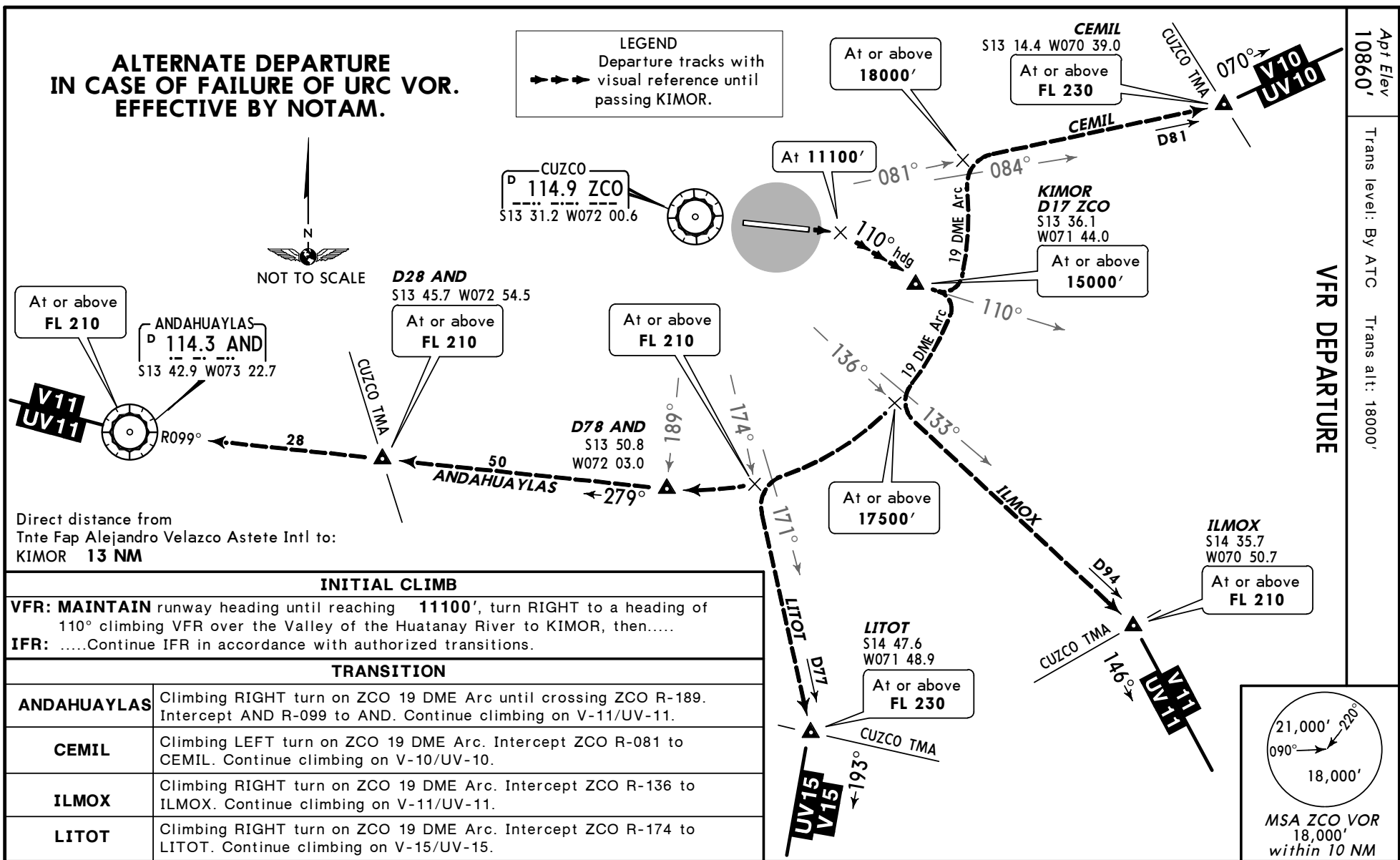
SPZO/CUZ
Tnte Fap ALEJANDRO
VELAZCO ASTETE INTL

JEPPESSEN
23 SEP 05 **10-3A-1**

CUZCO, PERU
SID

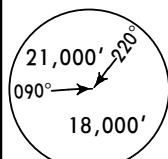
Apt Elev
10860'
Trans level: By ATC Trans alt: 18000'

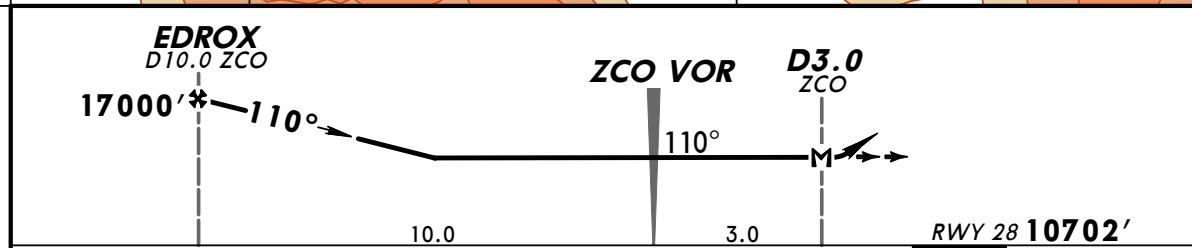
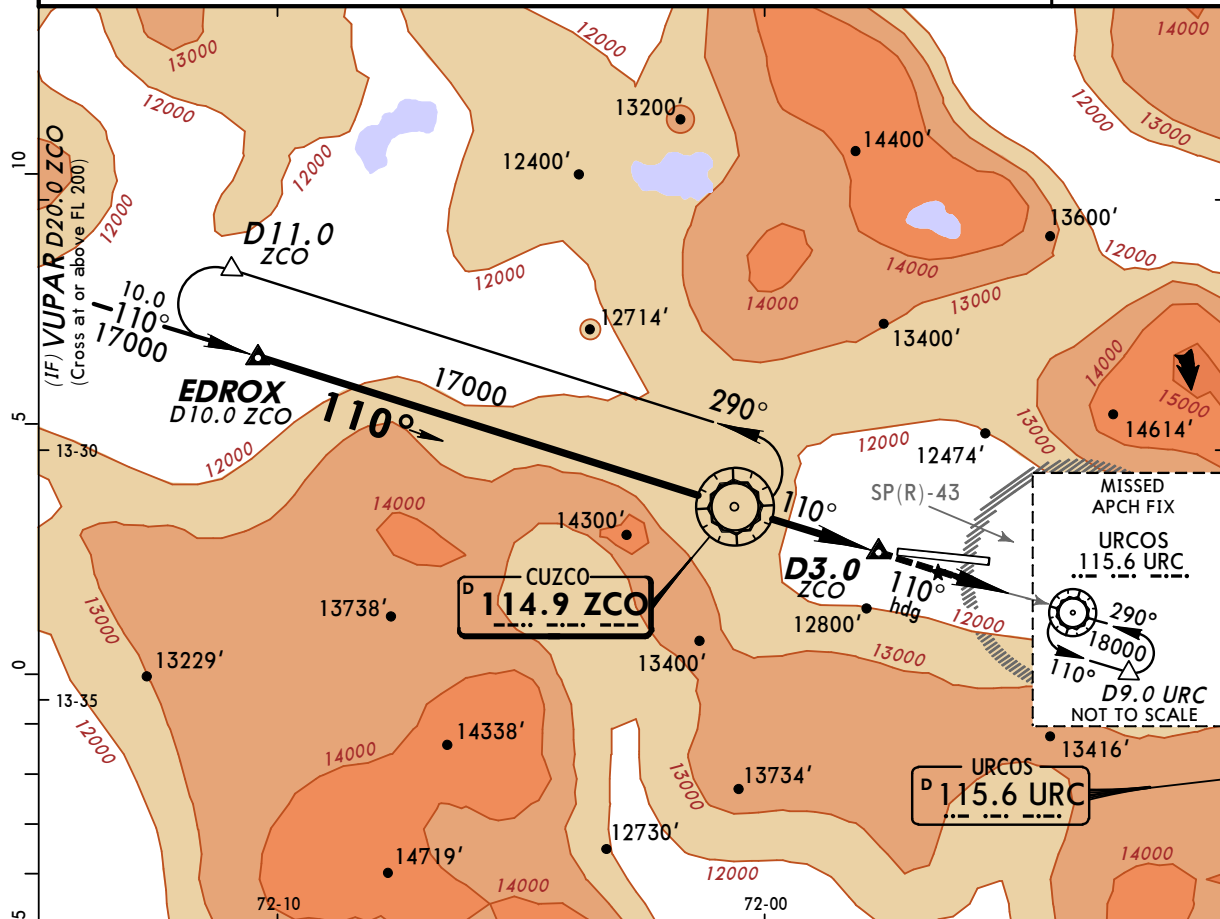
VFR DEPARTURE



Notice: After 07/12/2006 0901Z this chart should not be used without first checking JeppView or NOTAMS.

SPZO/CUZ **26 AUG 05 (13-1)** **CUZCO, PERU**
TNTE FAP ALEJANDRO VELAZCO ASTETE **VOR DME (CIRCLING) Rwy 28**
DESCENT ALPHA

*ATIS 127.0	*CUZCO Approach 120.6	*CUZCO Tower 118.1	*Ground 121.9
VOR ZCO 114.9	Final Apch Crs 110°	Minimum Alt EDROX 17000' (6300')	MDA(H) Refer to Minimums Apt Elev 10860' Rwy 28 10702'
MISSED APCH: Climb on 110° heading (R-110 ZCO/R-290 URC) and cross URC VOR at or above 18000' and hold.			
Alt Set: hPa	Rwy Elev: 335 hPa	Trans level: By ATC	Trans alt: 18000'
1. DME required. 2. Procedure not authorized at night. 3. Max IAS below FL 230 is 220 Kts.			
			 MSA ZCO VOR 18,000' within 10 NM



Gnd Speed-Kts	70	90	100	120	140	160			
Rate of descent on final 5.0%	354	456	506	608	709	810			
MAP at D3.0 ZCO									

CEILING REQUIRED									
CIRCLE-TO-LAND									
Circling prohibited for Rwy 10									
Circling not authorized north of airport									
	DAY							NIGHT	
Max Kts	MDA(H)							CEIL-VIS	
A 100									
B 135									
C 180									
D 205									
	14500' (3800')				1200m - 8.0 km				NA

CHANGES: ATIS added.

© JEPPESEN SANDERSON, INC., 2000, 2005. ALL RIGHTS RESERVED.

Notice: After 07/12/2006 0901Z this chart should not be used without first checking JeppView or NOTAMS.

SPZO/CUZ

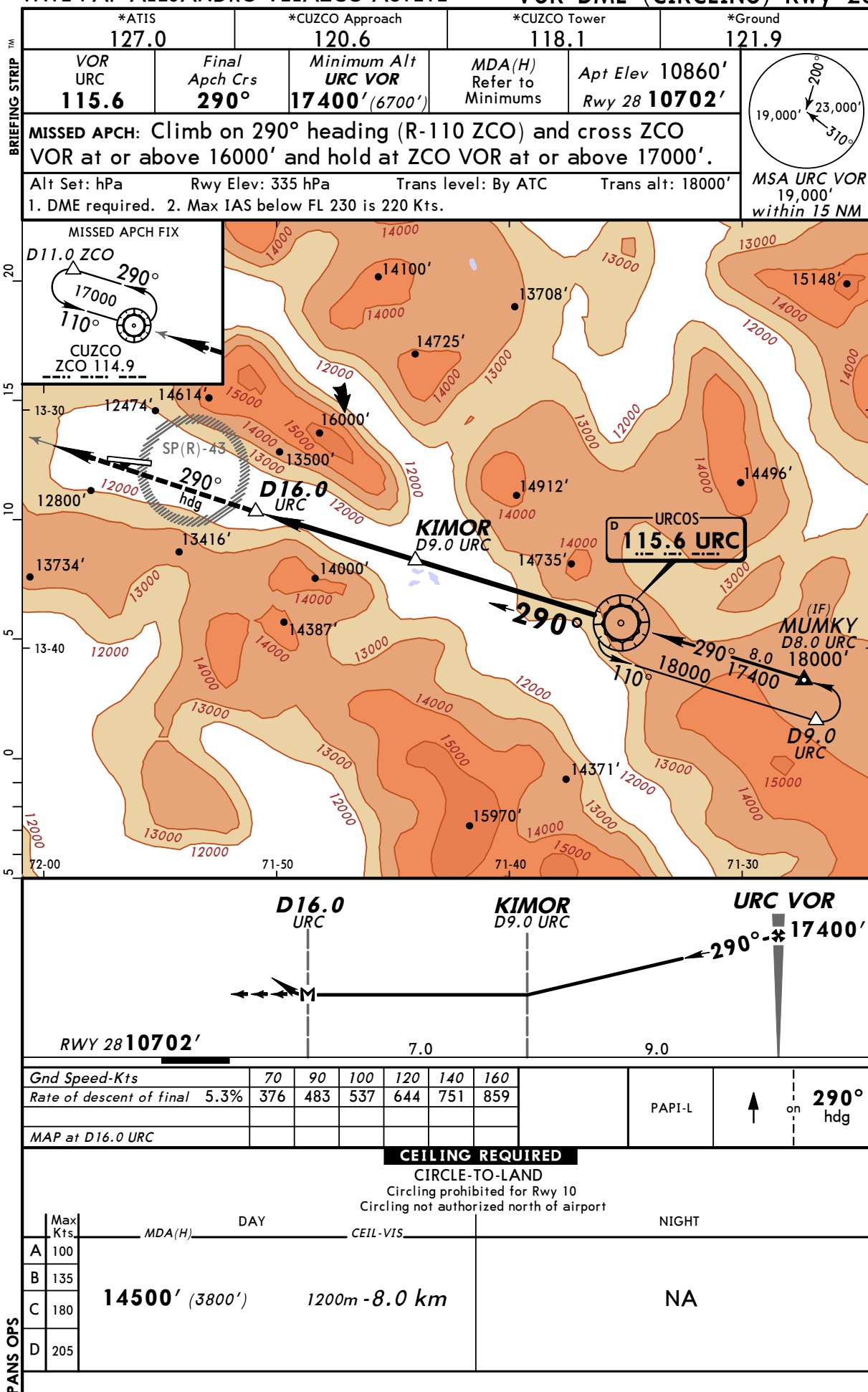
26 AUG 05 (13-2)

JEPPESEN

CUZCO, PERU
DESCENT BRAVO

TNTE FAP ALEJANDRO VELAZCO ASTETE

VOR DME (CIRCLING) Rwy 28



Notice: After 07/12/2006 0901Z this chart should not be used without first checking JeppView or NOTAMs.

SPZO/CUZ
Apt Elev **10860'**
S13 32.2 W071 56.3

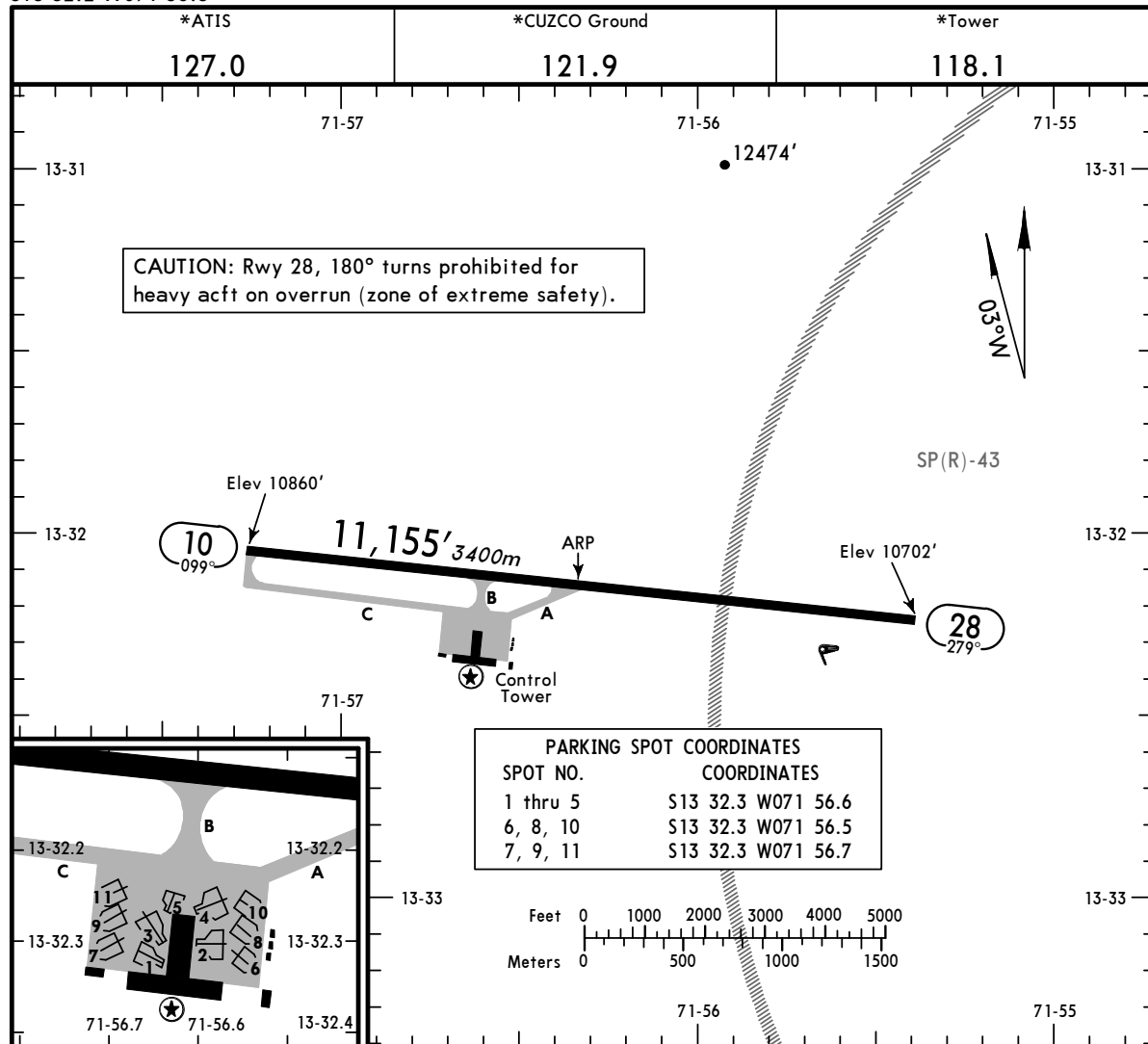
JEPPesen

26 AUG 05

(13-1)

TNTE FAP ALEJANDRO VELAZCO ASTETE

CUZCO, PERU



ADDITIONAL RUNWAY INFORMATION

RWY		USABLE LENGTHS		TAKE-OFF	WIDTH
		Threshold	Landing Beyond Glide Slope		
10					148'
28	PAPI-L (angle 3.0°) RVR				45m
