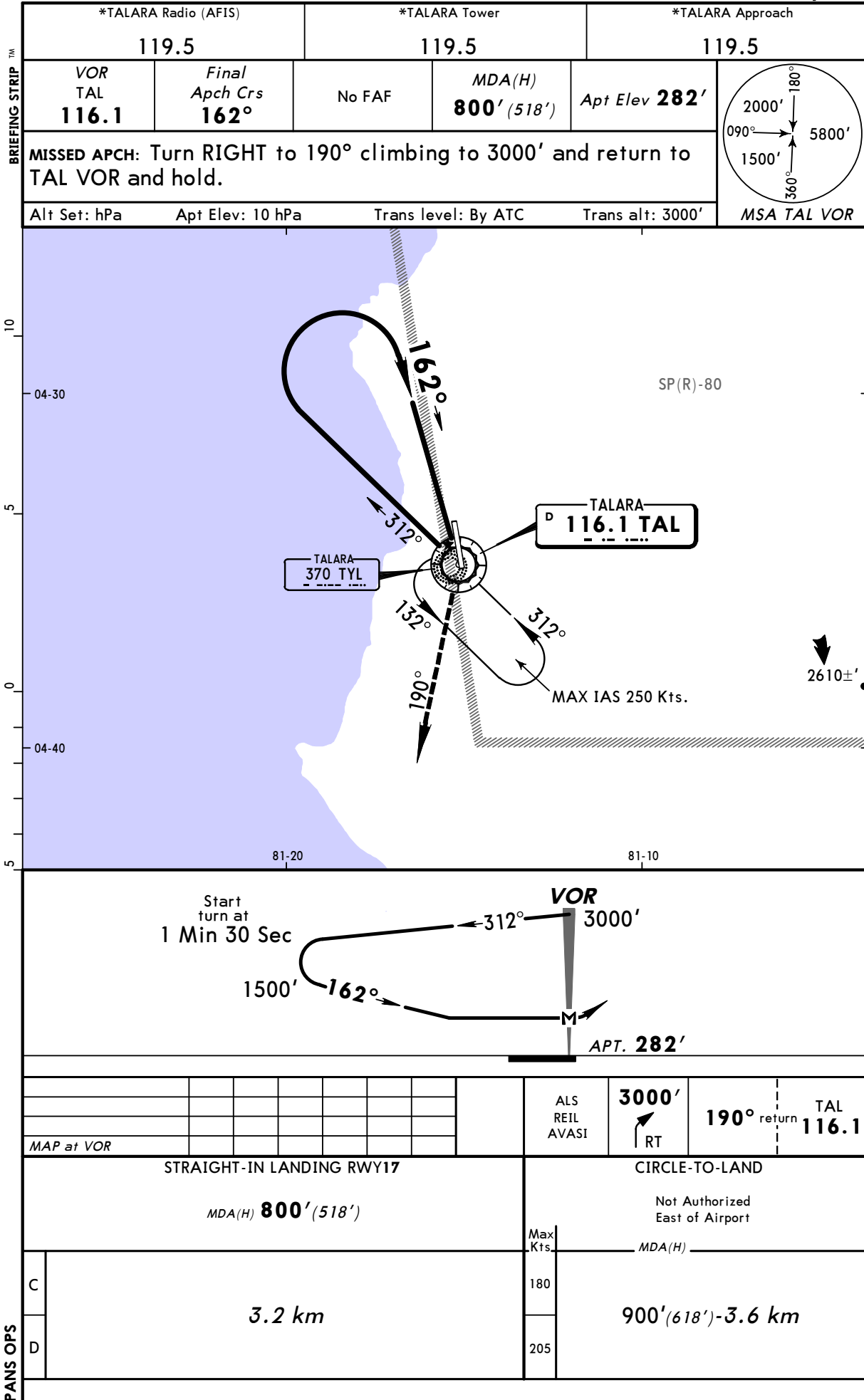


SPYL/TYL
CAPITAN MONTES

JEPPesen
9 SEP 05 (13-1)

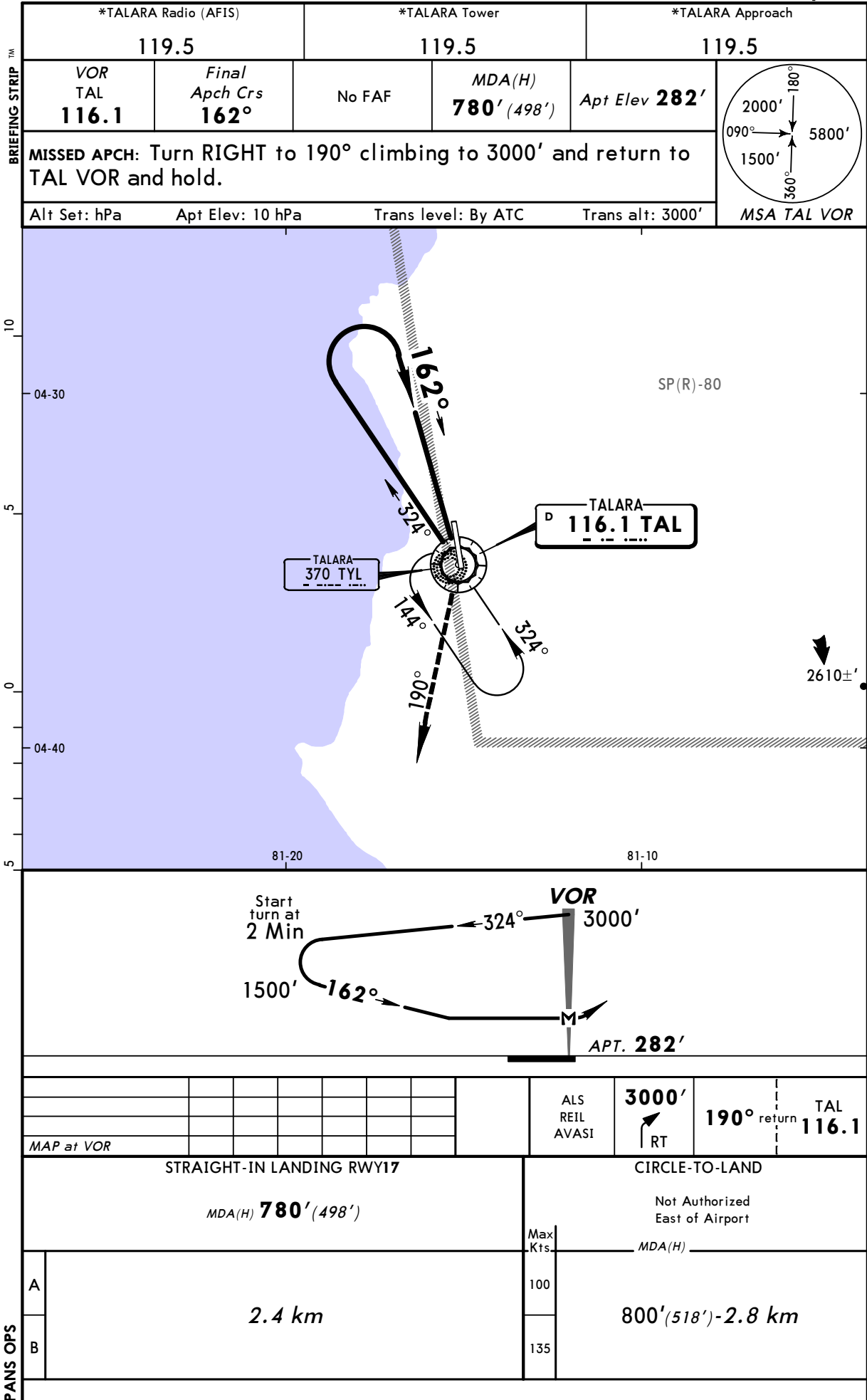
TALARA, PERU
CAT C & D VOR Rwy 17



SPYL/TYL
CAPITAN MONTES

JEPPESEN
9 SEP 05 (13-2)

TALARA, PERU
CAT A & B VOR Rwy 17

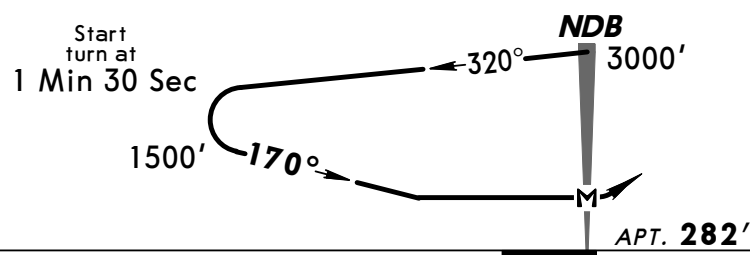
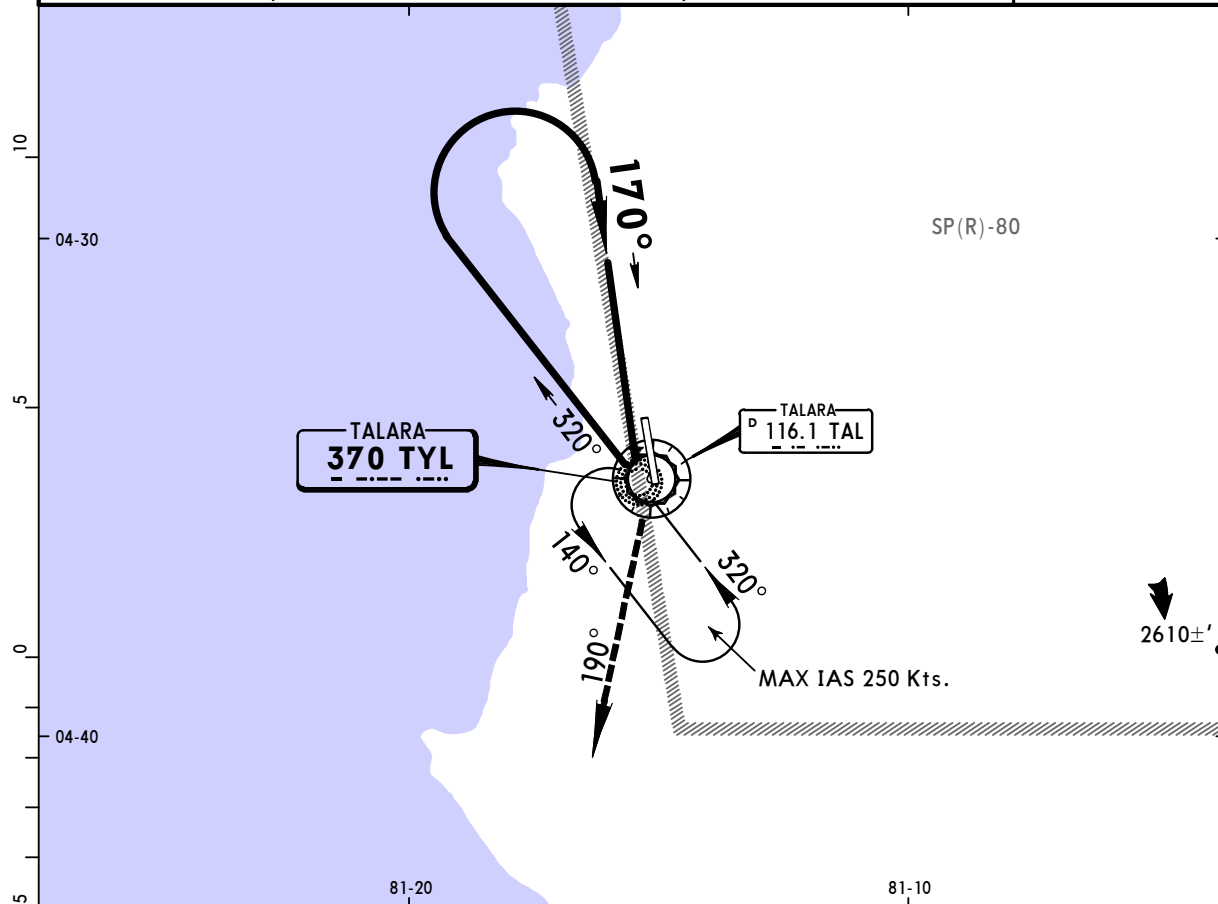


SPYL/TYL
CAPITAN MONTES

JEPPESEN
9 SEP 05 (16-1)

TALARA, PERU
CAT C & D NDB Rwy 17

*TALARA Radio (AFIS)		*TALARA Tower		*TALARA Approach	
119.5		119.5		119.5	
NDB TYL 370	Final Apch Crs 170°	No FAF	MDA(H) 800' (518')	Apt Elev 282'	
MISSED APCH: Turn RIGHT to 190° bearing from TYL NDB climbing to 3000' and return to TYL NDB and hold.					
Alt Set: hPa		Apt Elev: 10 hPa		Trans level: By ATC	
				Trans alt: 3000'	
MSA TYL NDB					

[illegible]

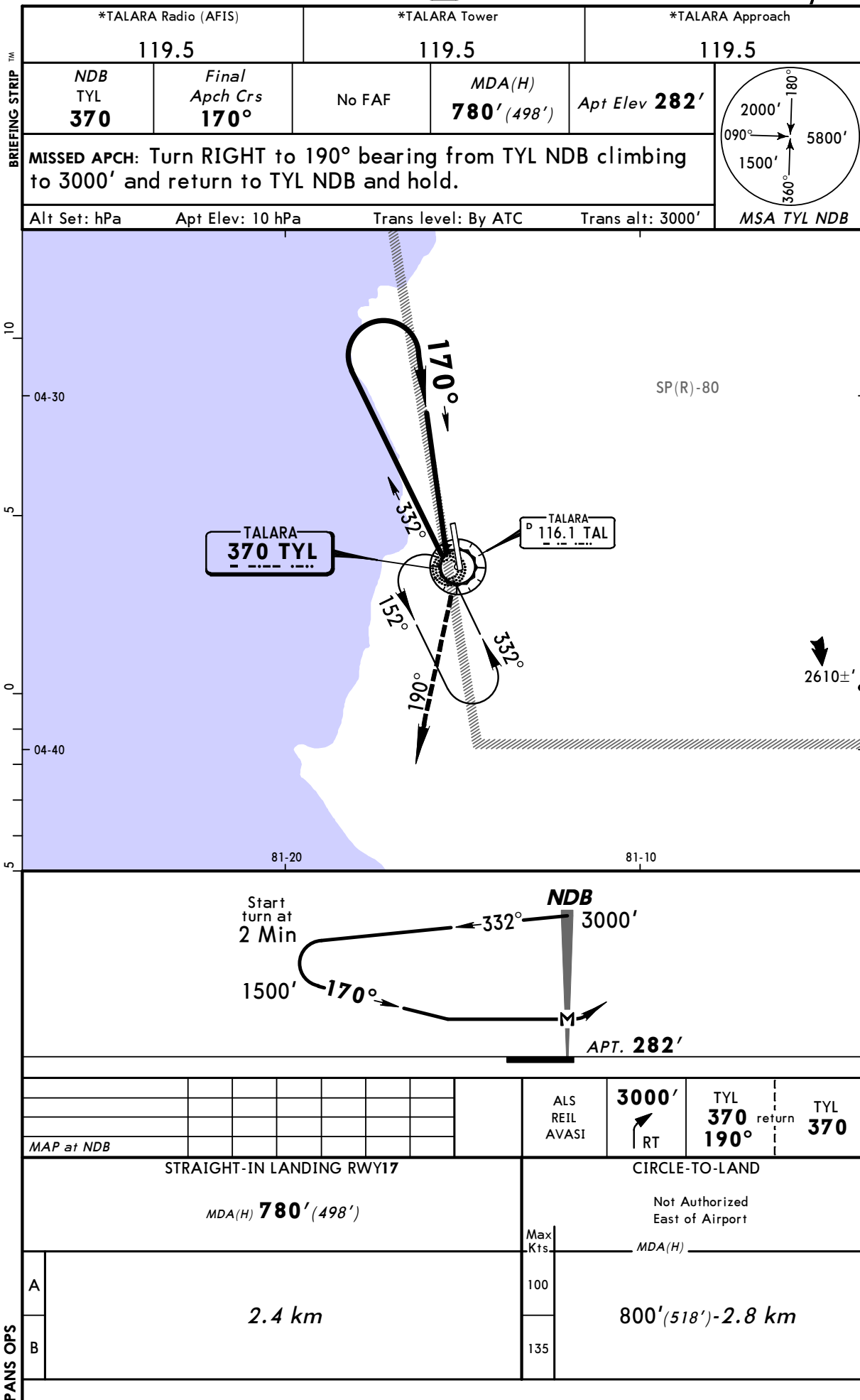
CHANGES: Procedure ident, communications.

© JEPPESEN SANDERSON, INC., 2005. ALL RIGHTS RESERVED.

SPYL/TYL
CAPITAN MONTES

JEPPesen
9 SEP 05 (16-2)

TALARA, PERU
CAT A & B NDB Rwy 17

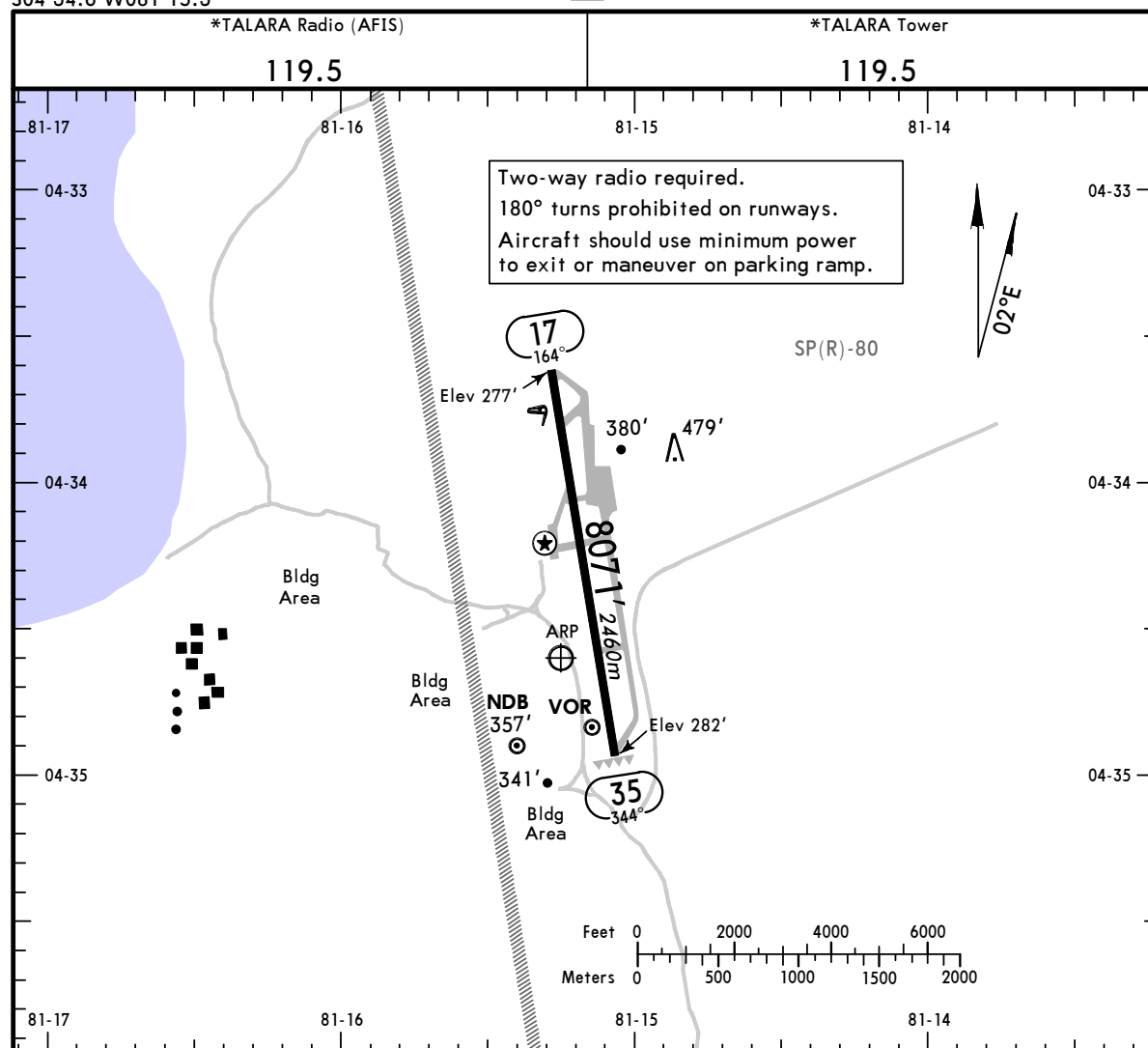


Notice: After 07/12/2006 0901Z this chart should not be used without first checking JeppView or NOTAMs.

SPYL/TYL
Apt Elev **282'**
S04 34.6 W081 15.3

JEPPESEN
9 SEP 05 **(13-1)**

TALARA, PERU
CAPITAN MONTES



ADDITIONAL RUNWAY INFORMATION

RWY		USABLE LENGTHS			
		Threshold	Landing Beyond	Glide Slope	TAKE-OFF
17	RL ALS (red, non-std) REIL AVASI				
35	RL				

1 150' shoulder each side of rwy.

TAKE-OFF

	AIR CARRIER (JAA)		AIR CARRIER (FAR 121)	
	LVP must be in Force All Rwys RCLM (DAY only) or RL	All Rwys RCLM (DAY only) or RL	All Rwys Adequate Vis Ref	
A				
B	250m	400m	2 Eng	400m
C			3 & 4 Eng	
D	300m			