

JEPPESEN

21 NOV 03

10-2

Eff 27 Nov

STAR

TACNA, PERU

CORONEL CARLOS CIRIANI SANTA ROSA INTL

TRANS LEVEL: BY ATC
TRANS ALT: 5000'

GAVAR 1, ILO 2, LOLES 2, ORALO 2 ARRIVALS (RWY 02)

GAVAR 1

Descend from routes V-12/UV-12 to Gavar Int and cross at or above FL 220. Continue descending to cross D65 TCA at or above FL 170, D50 TCA at or above FL 125, D38 TCA at or above FL 090, D25 TCA at or above FL 060, and TCA VOR at or above 5000'.

ILO 2

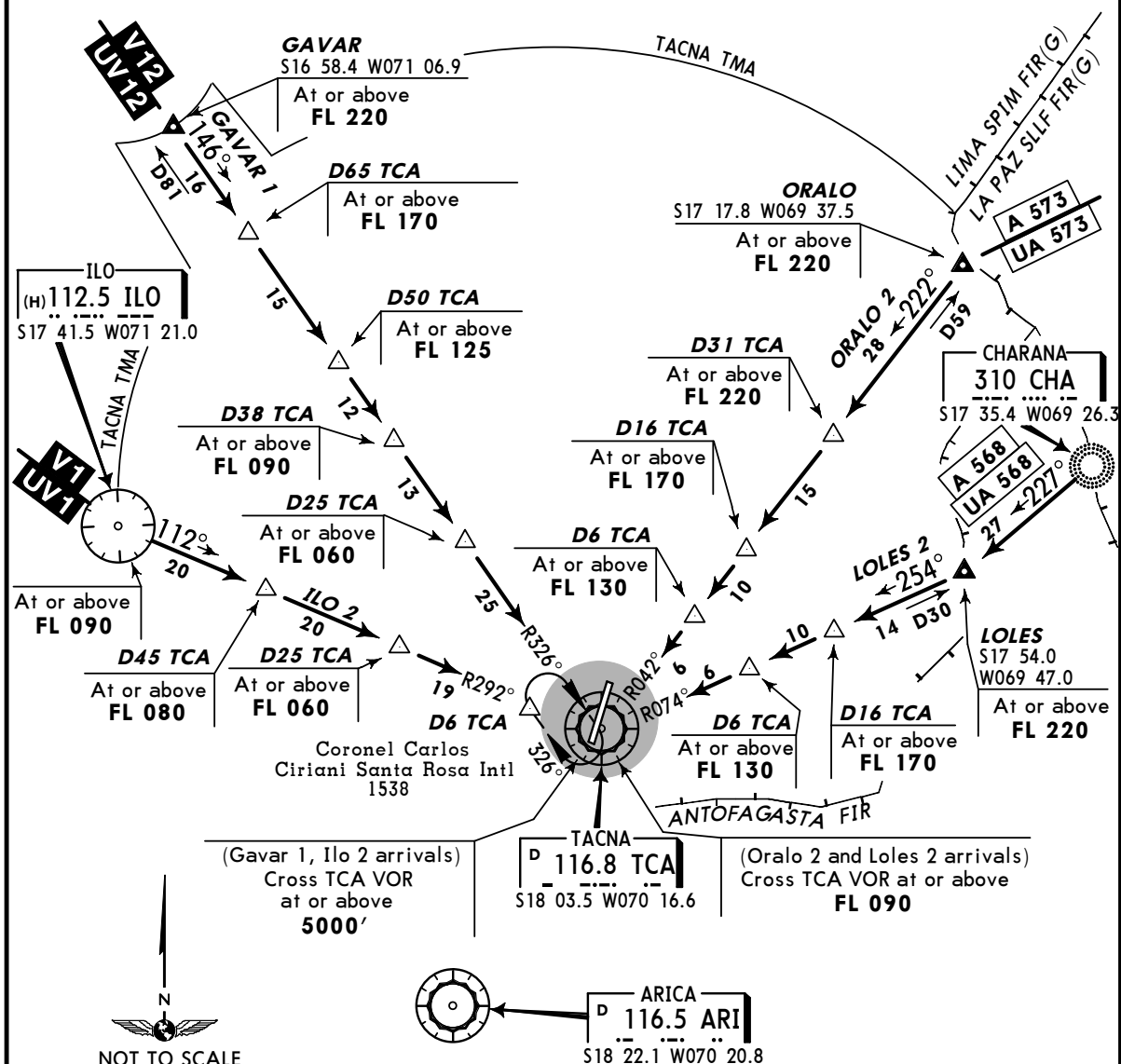
Descend from routes V-1/UV-1 to ILO VOR and cross at or above FL 090. Continue descending to cross D45 TCA at or above FL 080, D25 TCA at or above FL 060, and TCA VOR at or above 5000'.

LOLES 2

Descend from routes A-568/UA-568 to Loles Int and cross at or above FL 220, then turn RIGHT to intercept TCA R-074 (heading 254°). Cross D16 TCA at or above FL 170, D6 TCA at or above FL 130, and TCA VOR at or above FL 090.

ORALO 2

Descend from routes A-573/UA-573 to Oralo Int and cross at or above FL 220. Intercept TCA R-042 (heading 222°) to cross D31 TCA at or above FL 220, D16 TCA at or above FL 170, D6 TCA at or above FL 130, and TCA VOR at or above FL 090.



TRANS LEVEL: BY ATC
TRANS ALT: 5000'

GAVAR 1, ILO 2, TACNA 2
DEPARTURES
(RWY 20)
CORONEL CARLOS CIRIANI SANTA ROSA INTL

GAVAR 1, ILO 2, TACNA 2 DEPARTURES
(RWY 20)

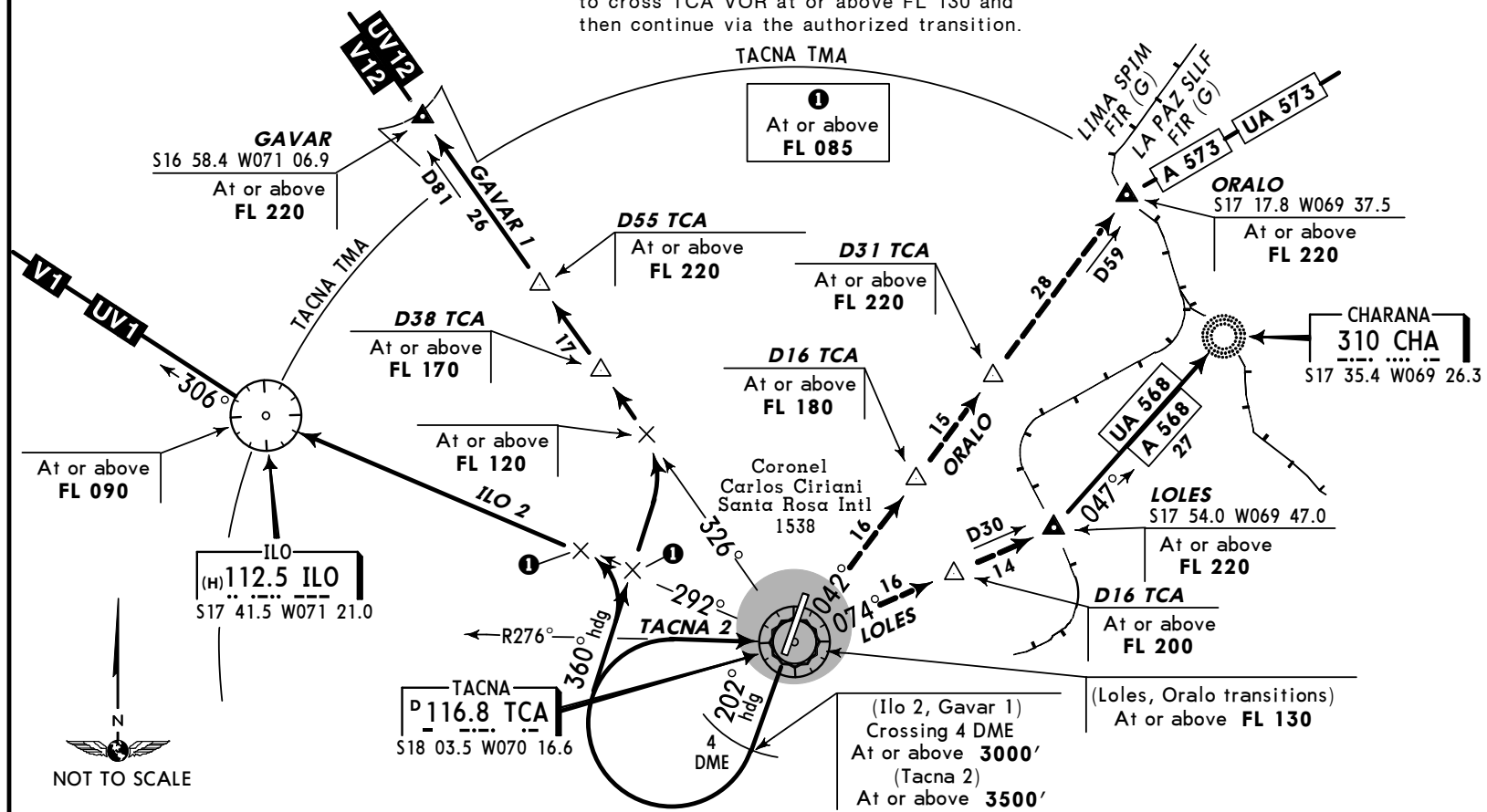
GAVAR 1: Climb on 202° heading until crossing 4 DME TCA at or above 3000'. Turn RIGHT on a 360° heading crossing TCA R-292 at or above FL 085. Continue to intercept TCA R-326 at or above FL 120. Proceed to Gavar Int crossing D38 TCA at or above FL 170, and D55 TCA at or above FL 220. Continue climbing on route UV-12/V-12.

ILO 2: Climb on 202° heading until crossing 4 DME TCA at or above 3000', turn RIGHT and intercept TCA R-292 at or above FL 085 to ILO VOR. Cross ILO VOR at or above FL 090 and proceed climbing on routes V-1/UV-1.

TACNA 2: Climb on 202° heading until crossing 3500' or above, then turn RIGHT to intercept TCA R-276 (096° heading) to cross TCA VOR at or above FL 130 and then continue via the authorized transition.

LOLES TRANSITION: Continue climbing via TCA R-074 to cross D16 TCA at or above FL 200, Loles Int at or above FL 220. Continue climbing on routes A-568/UA-568.

ORALO TRANSITION: Continue climbing via TCA R-042 to cross D16 TCA at or above FL 180, D31 TCA at or above FL 220, Oralo Int at or above FL 220. Continue climbing on routes A-573/UA-573.



Notice: After 07/12/2006 0901Z this chart should not be used without first checking JeppView or NOTAMS.

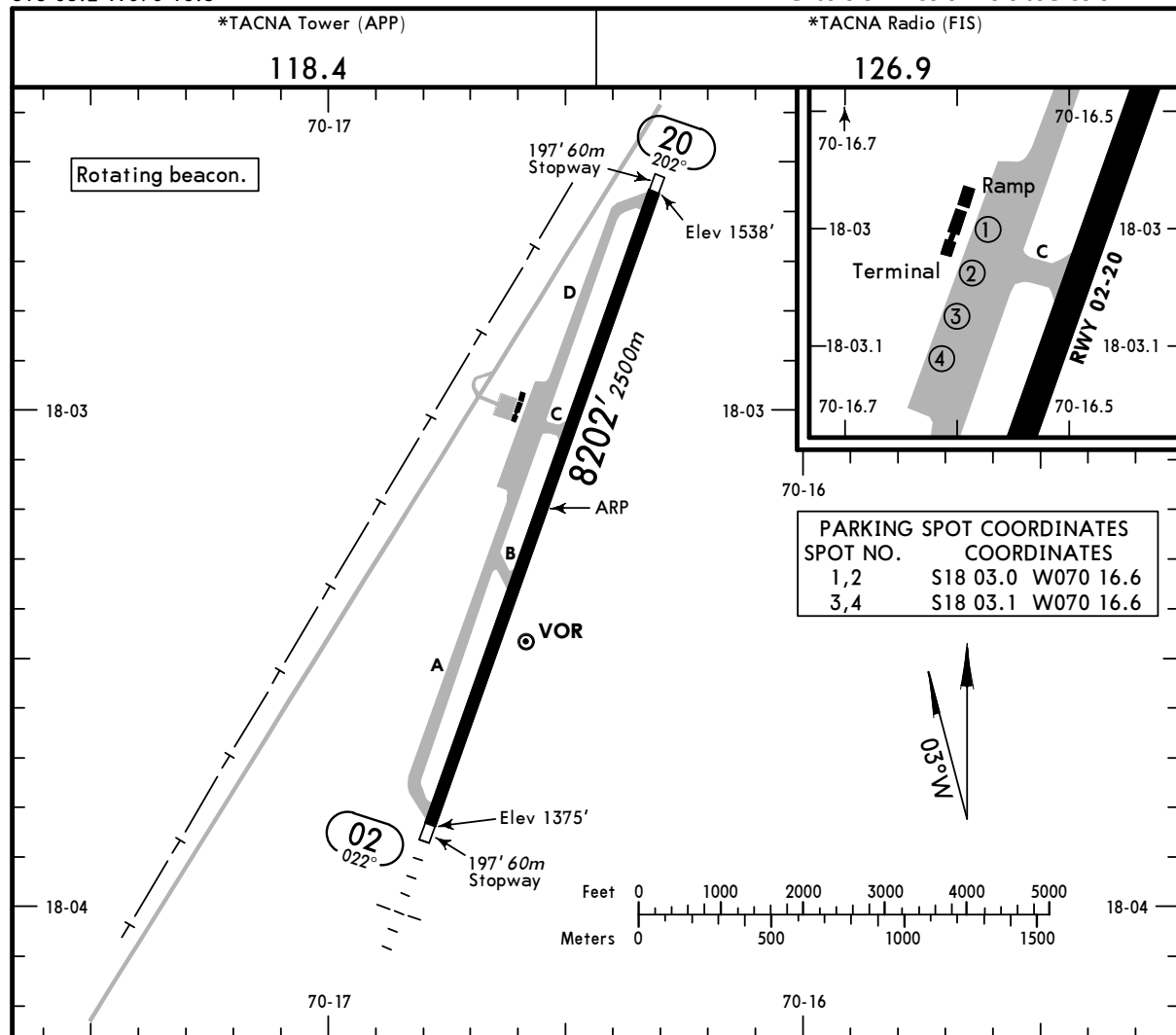
SPTN/TCQ

Apt Elev **1538'**
S18 03.2 W070 16.5

JEPPesen

5 MAY 06 **(10-9)**

TACNA, PERU
COLONEL CARLOS
CIRIANI SANTA ROSA INTL



ADDITIONAL RUNWAY INFORMATION

RWY				USABLE LENGTHS		WIDTH
				LANDING BEYOND	TAKE-OFF	
	RL	ALS	PAPI-L (angle 2.5°)	Threshold	Glide Slope	
02	RL	ALS	PAPI-L (angle 2.5°)			148'
20	RL	REIL	① PAPI-L (angle 3.5°)			45m

① PAPI restricted from Rwy 20 at 5 NM and further out.

TAKE-OFF

	AIR CARRIER (JAA)		AIR CARRIER (FAR 121)	
	LVP must be in Force All Rwys RCLM (DAY only) or RL	All Rwys RCLM (DAY only) or RL	All Rwys Adequate Vis Ref	
A	RVR 250m	RVR 400m	2 Eng	400m
B			3 & 4 Eng	
C				
D	RVR 300m			

CHANGES: Parking spots added.

© JEPPESEN SANDERSON, INC., 2002, 2006. ALL RIGHTS RESERVED.

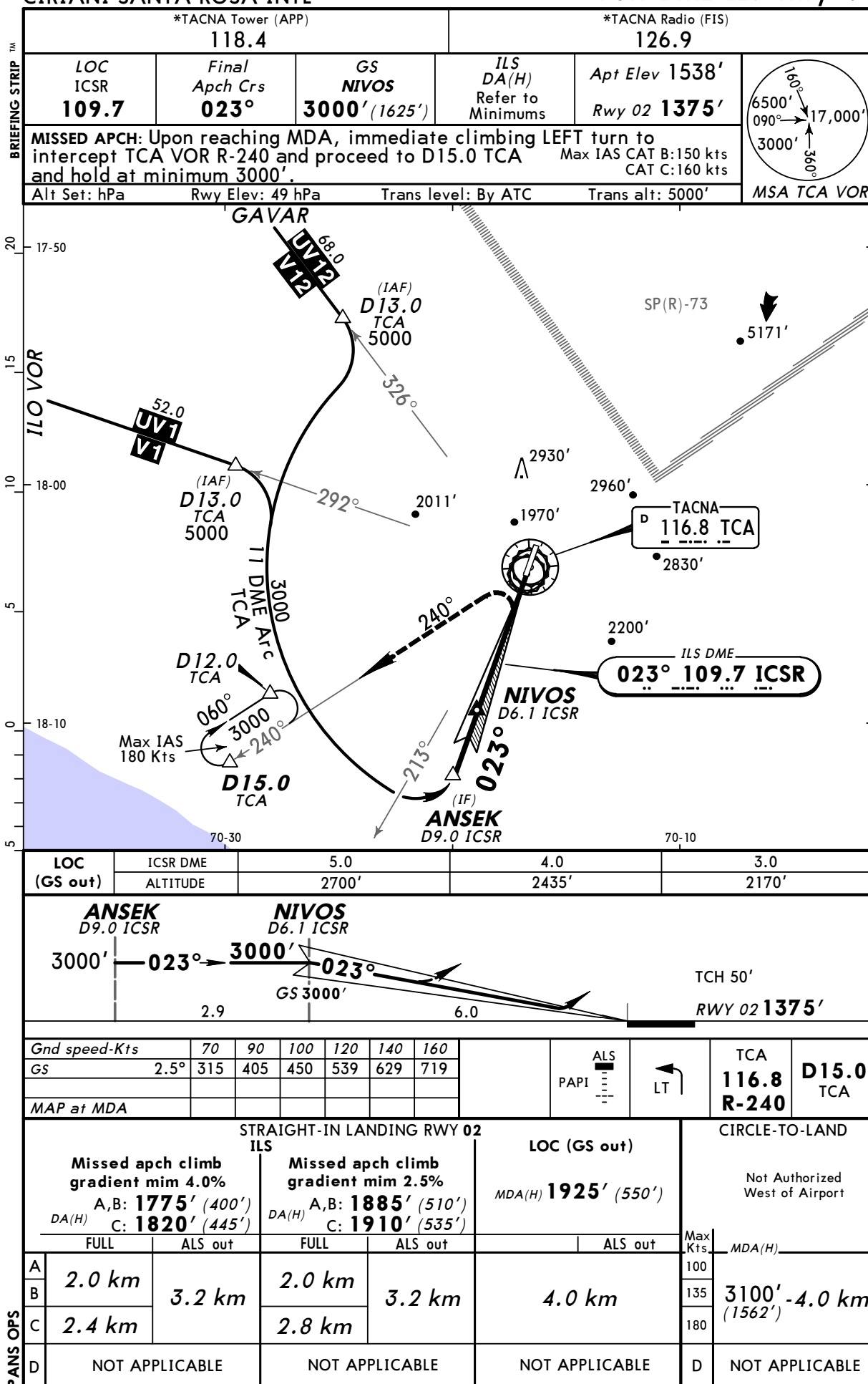
Notice: After 07/12/2006 0901Z this chart should not be used without first checking JeppView or NOTAMS.

SPTN/TCQ
COLONEL CARLOS
CIRIANI SANTA ROSA INTL

JEPPesen

12 AUG 05 **(11-1)**

TACNA, PERU
CAT A, B & C **DESCENT ALFA**
VOR DME-ILS Rwy 02



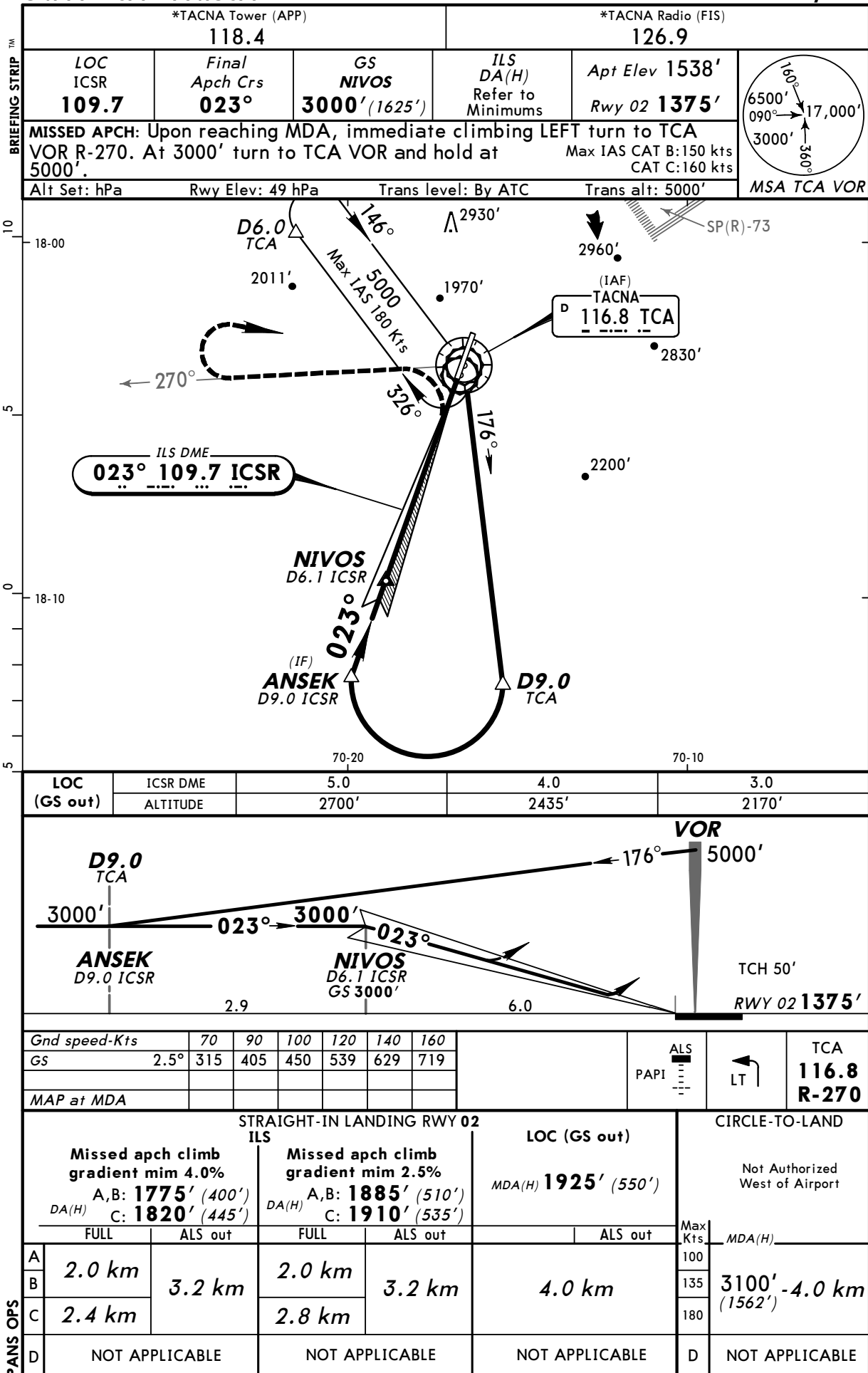
SPTN/TCQ
COLONEL CARLOS
CIRIANI SANTA ROSA INTL

JEPPesen

12 AUG 05 **(11-2)**

CAT A, B & C

TACNA, PERU
DESCENT CHARLIE
VOR DME-ILS Rwy 02



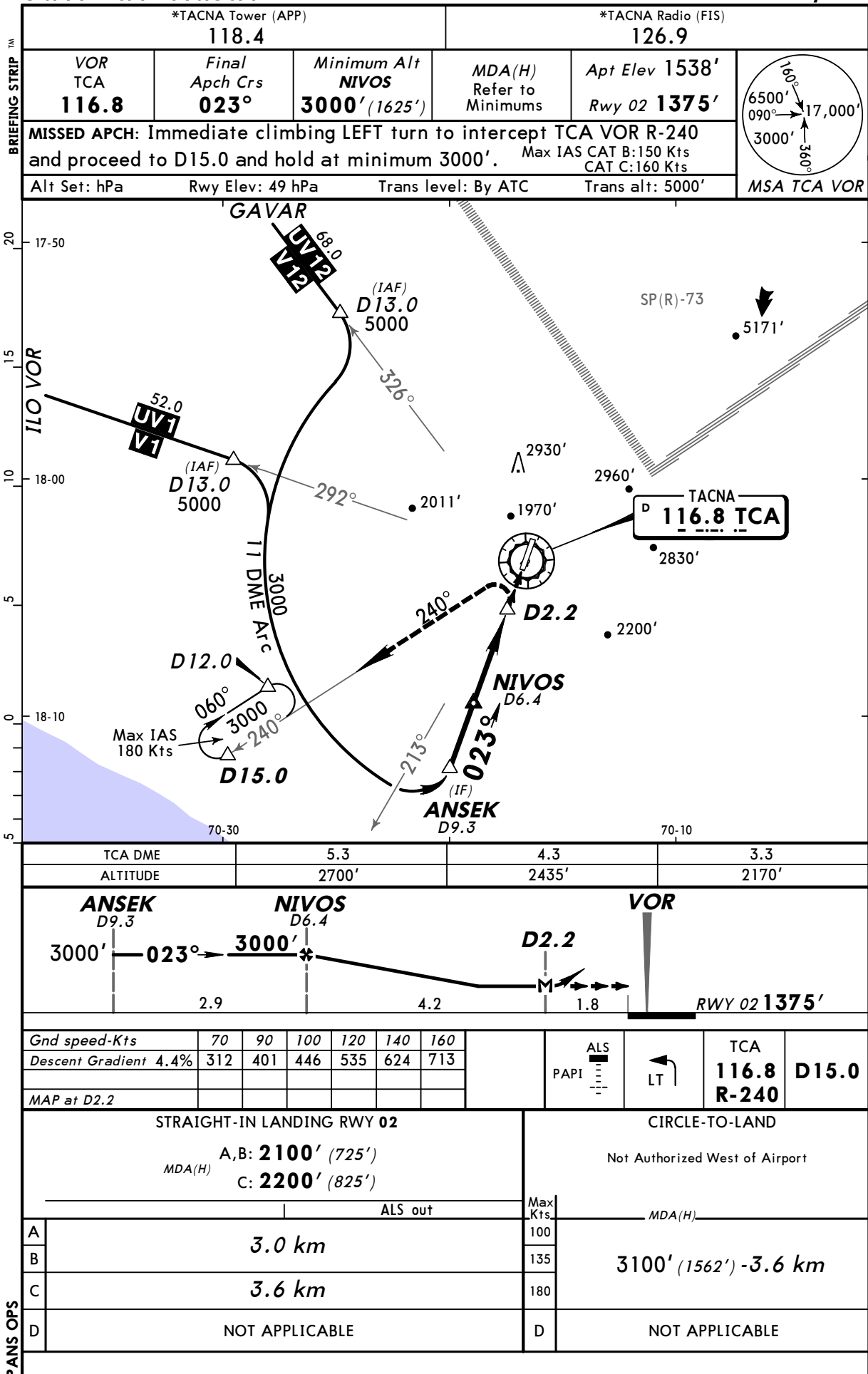
SPTN/TCQ
COLONEL CARLOS
CIRIANI SANTA ROSA INTL

JEPPesen

12 AUG 05 (13-1)

CAT A, B & C

TACNA, PERU
DESCENT BRAVO
VOR DME Rwy 02



SPTN/TCQ
COLONEL CARLOS
CIRIANI SANTA ROSA INTL

JEPPESSEN

12 AUG 05 **(13-2)**

CAT A, B & C

TACNA, PERU
DESCENT DELTA
VOR DME Rwy 02

