

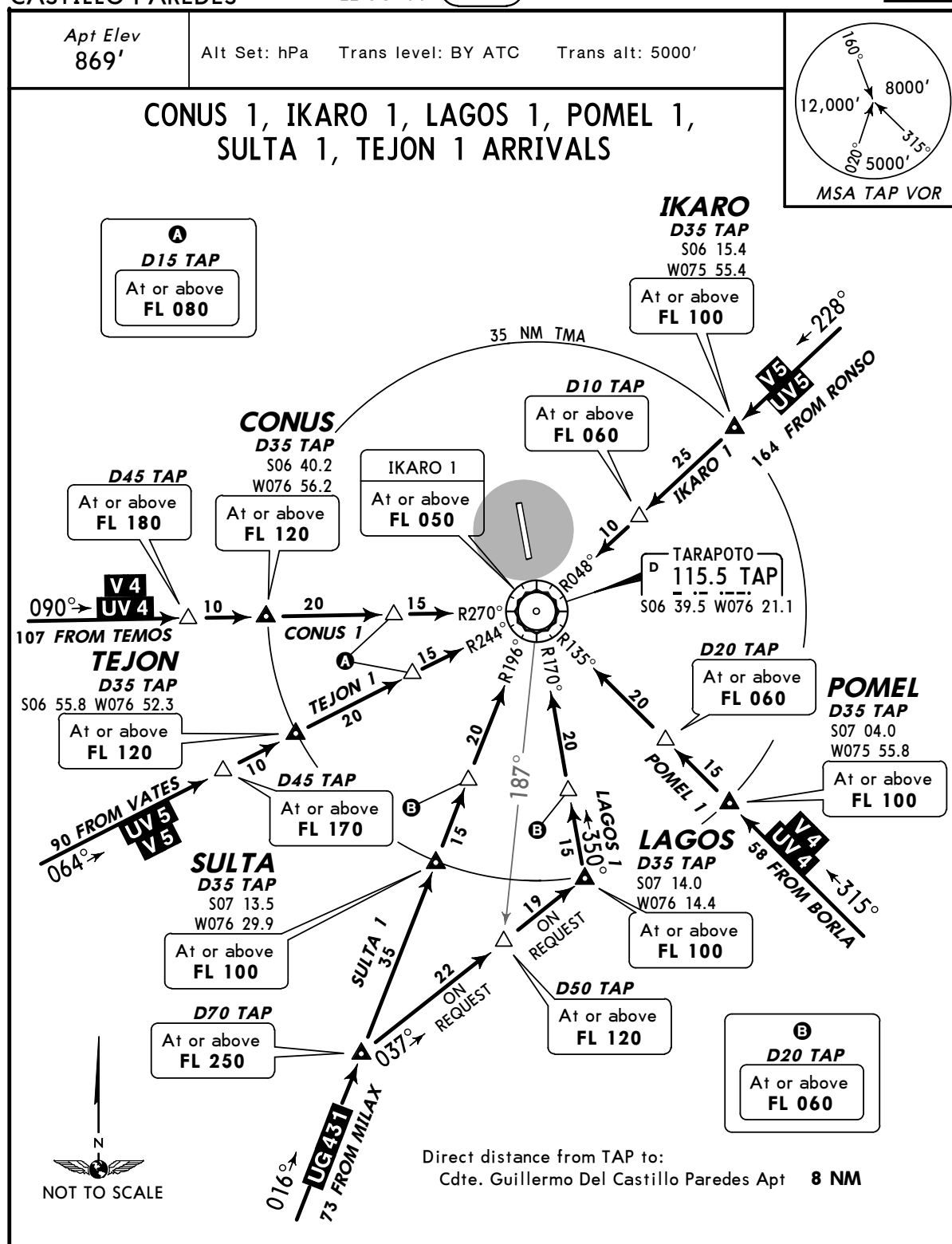
SPST/TPP  
CDTE. GUILLERMO DEL  
CASTILLO PAREDES

JEPPESEN

22 OCT 04 (10-2)

TARAPOTO, PERU

STAR

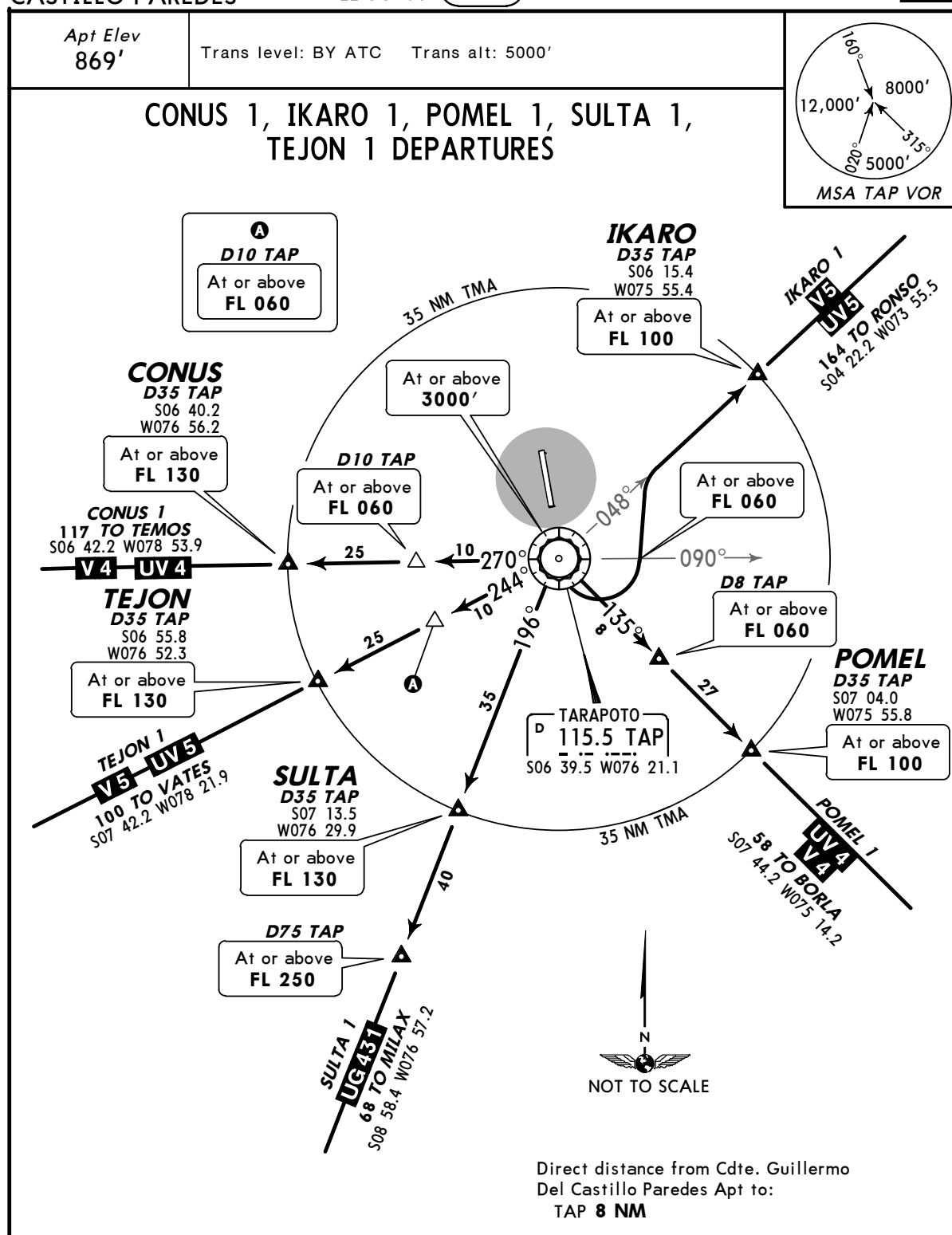


STAR	ROUTING
CONUS 1	Descend from routes V-4/UV-4 (TAP R-270) to CONUS. Continue to TAP and proceed according to ATC instructions.
IKARO 1	Descend from routes V-5/UV-5 (TAP R-048) to IKARO and proceed according to ATC instructions.
LAGOS 1	Descend from route UG-431 (TAP R-196) to D70 TAP, intercept TAP R-170 to LAGOS. Continue to TAP and proceed according to ATC instructions.
POMEL 1	Descend from routes V-4/UV-4 (TAP R-135) to POMEL and proceed according to ATC instructions.
SULTA 1	Descend from route UG-431 (TAP R-196) to SULTA. Continue to TAP and proceed according to ATC instructions.
TEJON 1	Descend from routes V-5/UV-5 (TAP R-244) to TEJON. Continue to TAP and proceed according to ATC instructions.

SPST/TPP  
CDTE. GUILLERMO DEL  
CASTILLO PAREDES

**JEPPesen**  
22 OCT 04 **10-3**

**TARAPOTO, PERU**  
**SID**



# **INITIAL CLIMB**

Climb to TAP.

SID	ROUTING
CONUS 1	Turn RIGHT to intercept TAP R-270 to CONUS. Continue climb on route V-4/UV-4 according to ATC instructions.
IKARO 1	Turn LEFT to intercept TAP R-048 to IKARO. Continue climb on route V-5/UV-5 according to ATC instructions.
POMEL 1	Turn LEFT to intercept TAP R-135 to POMEL. Continue climb on route V-4/UV-4 according to ATC instructions.
SULTA 1	Continue on TAP R-196 to SULTA. Continue climb on route UG-431 according to ATC instructions.
TEJON 1	Turn RIGHT to intercept TAP R-244 to TEJON. Continue climb on route V-5/UV-5 according to ATC instructions.

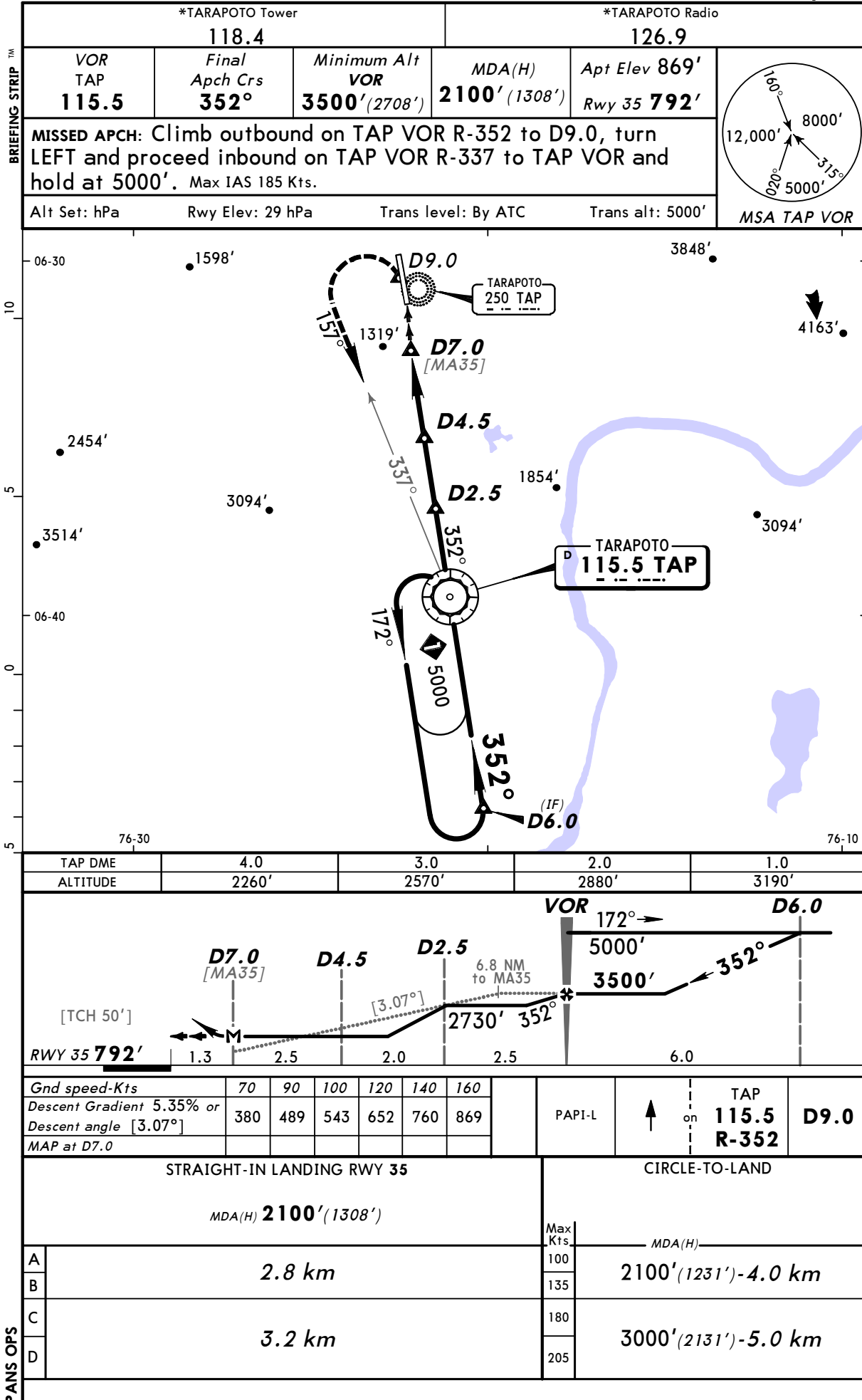
SPST/TPP

28 JAN 05

JEPPESEN

TARAPOTO, PERU  
VOR DME Rwy 35

CADETE FAP GUILLERMO DEL CASTILLO (13-1)



Notice: After 07/12/2006 0901Z this chart should not be used without first checking JeppView or NOTAMs.

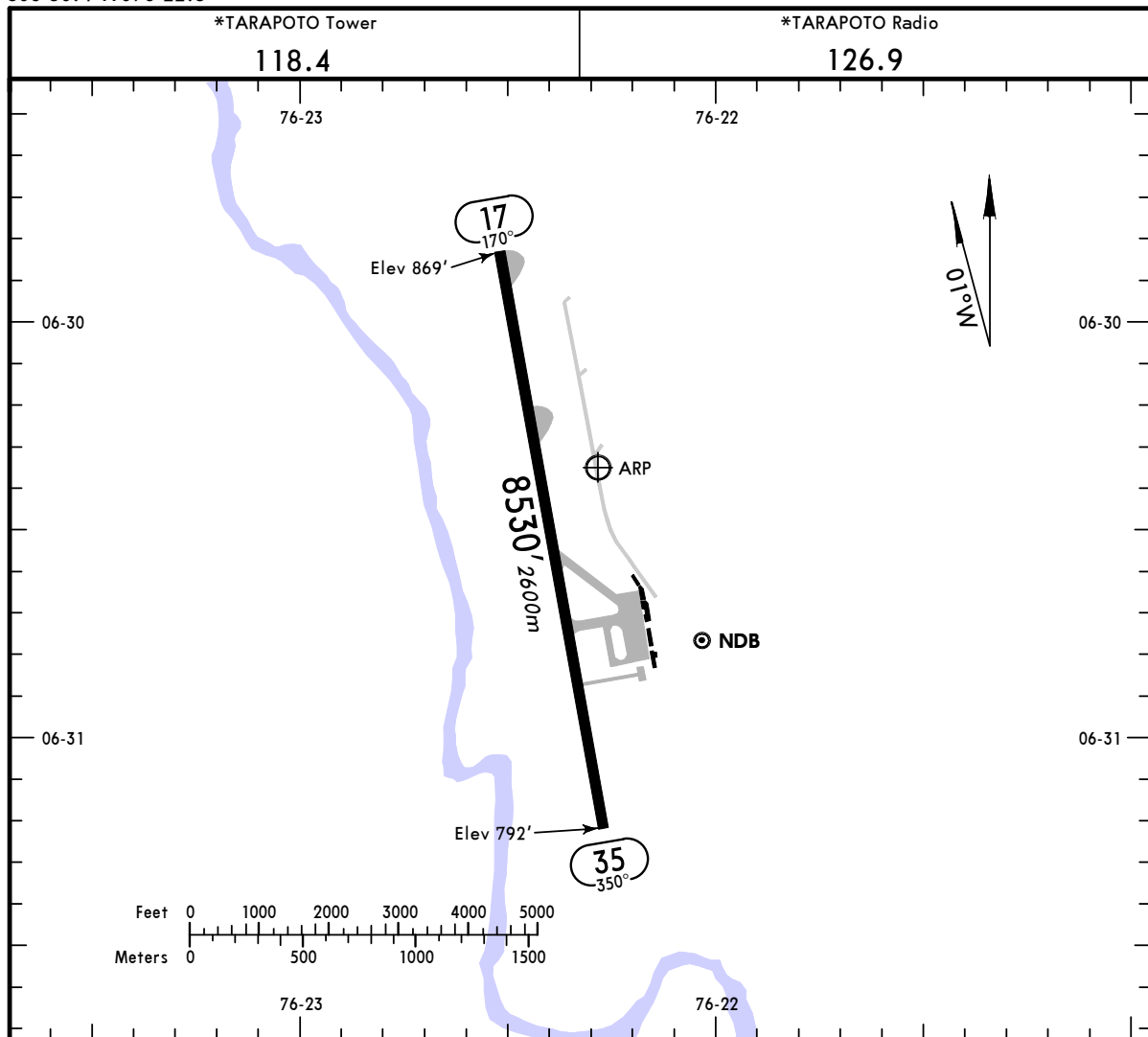
SPST/TPP

Apt Elev **869'**  
S06 30.4 W076 22.3

**JEPPESSEN**

28 JAN 05 **(13-1)**

**TARAPOTO, PERU**  
**CADETE FAP GUILLERMO DEL CASTILLO**



**ADDITIONAL RUNWAY INFORMATION**

RWY		USABLE LENGTHS			
		LANDING BEYOND		TAKE-OFF	WIDTH
		Threshold	Glide Slope		
17	RL				148'
35	RL PAPI-L (angle 3.0°)				45m

**TAKE-OFF**

	AIR CARRIER		AIR CARRIER (FAR 121)	
	All Rwy's		All Rwy's	
	RCLM (Day only) or RL		Adequate Vis Ref	
A	400m		2 Eng	400m
B			3 & 4 Eng	
C				
D				

CHANGES: Airport name, ramp revised, lighting.

© JEPPESEN SANDERSON, INC., 1999, 2005. ALL RIGHTS RESERVED.