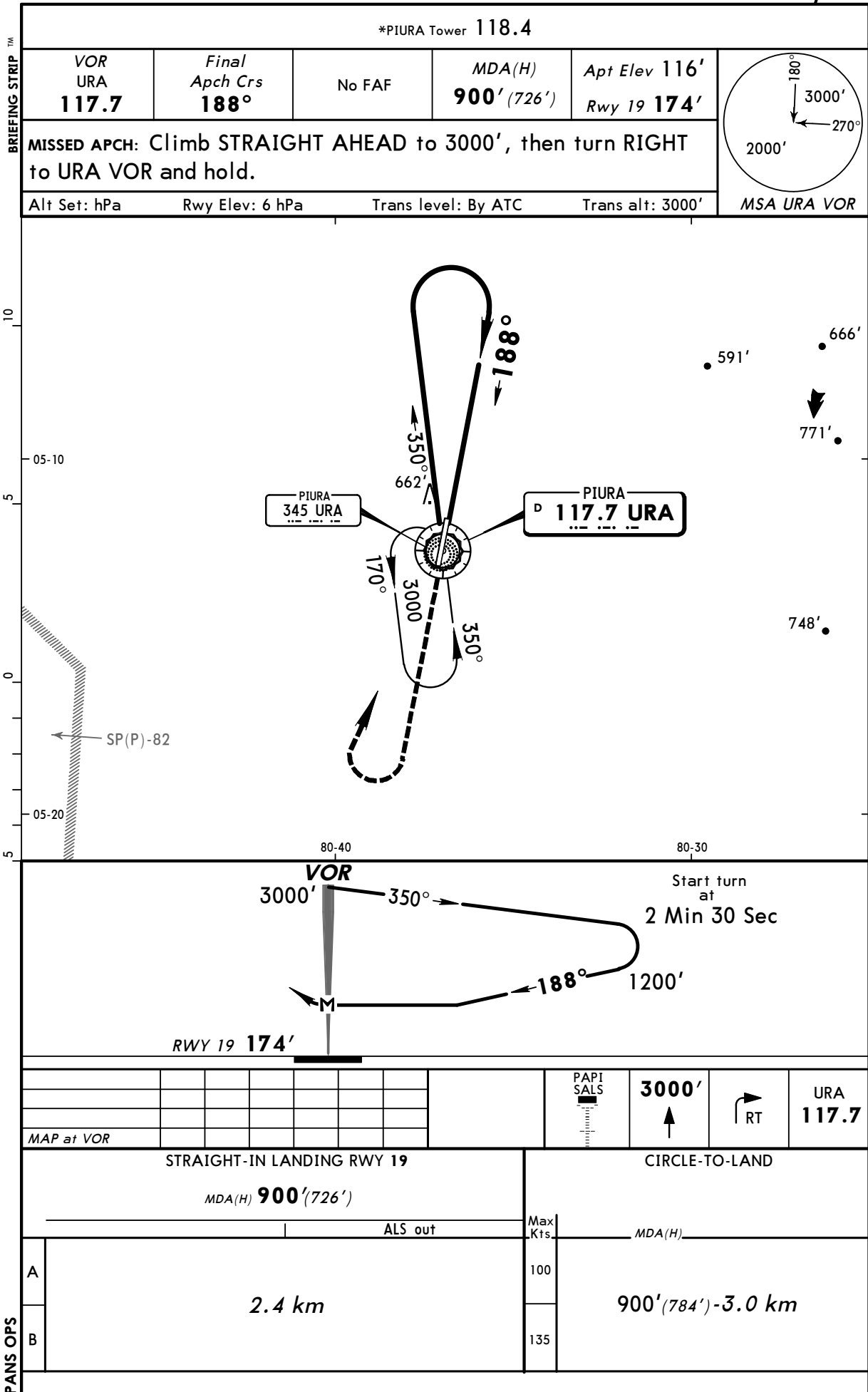


**SPUR/PIU**  
CAP GUILLERMO  
CONCHA IBERICO

**JEPPESEN**

7 OCT 05 (13-1)

**PIURA, PERU**  
CAT A & B **VOR Rwy 19**



CHANGES: Airport elevation, lighting.

© JEPPESEN SANDERSON, INC., 2001, 2005. ALL RIGHTS RESERVED.

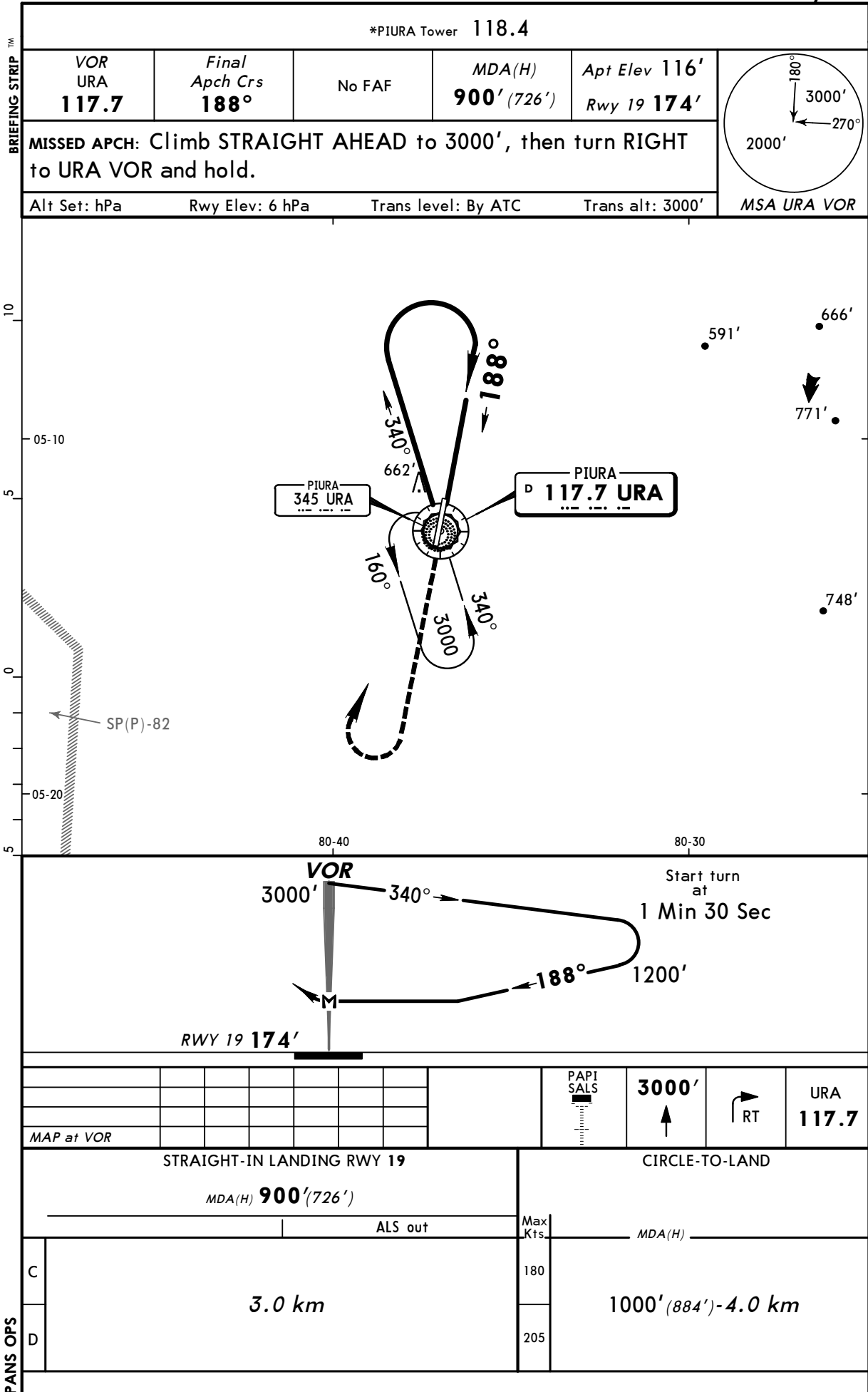
**SPUR/PIU**  
CAP GUILLERMO  
CONCHA IBERICO

**JEPPesen**

7 OCT 05 **13-2**

CAT C & D

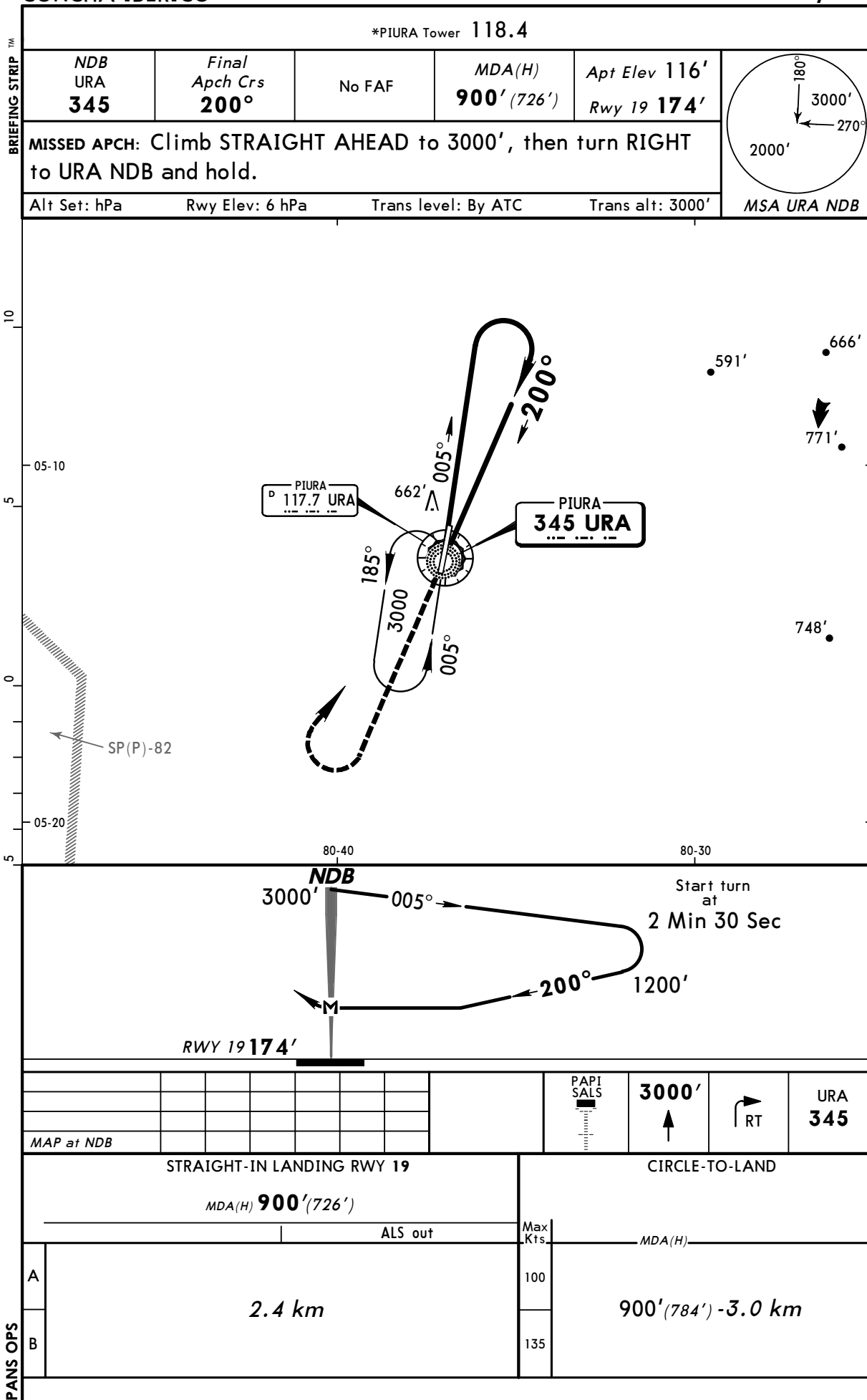
**PIURA, PERU**  
**VOR Rwy 19**



**SPUR/PIU**  
CAP GUILLERMO  
CONCHA IBERICO

**JEPPESEN**  
7 OCT 05 (16-1)

**PIURA, PERU**  
CAT A & B **NDB Rwy 19**



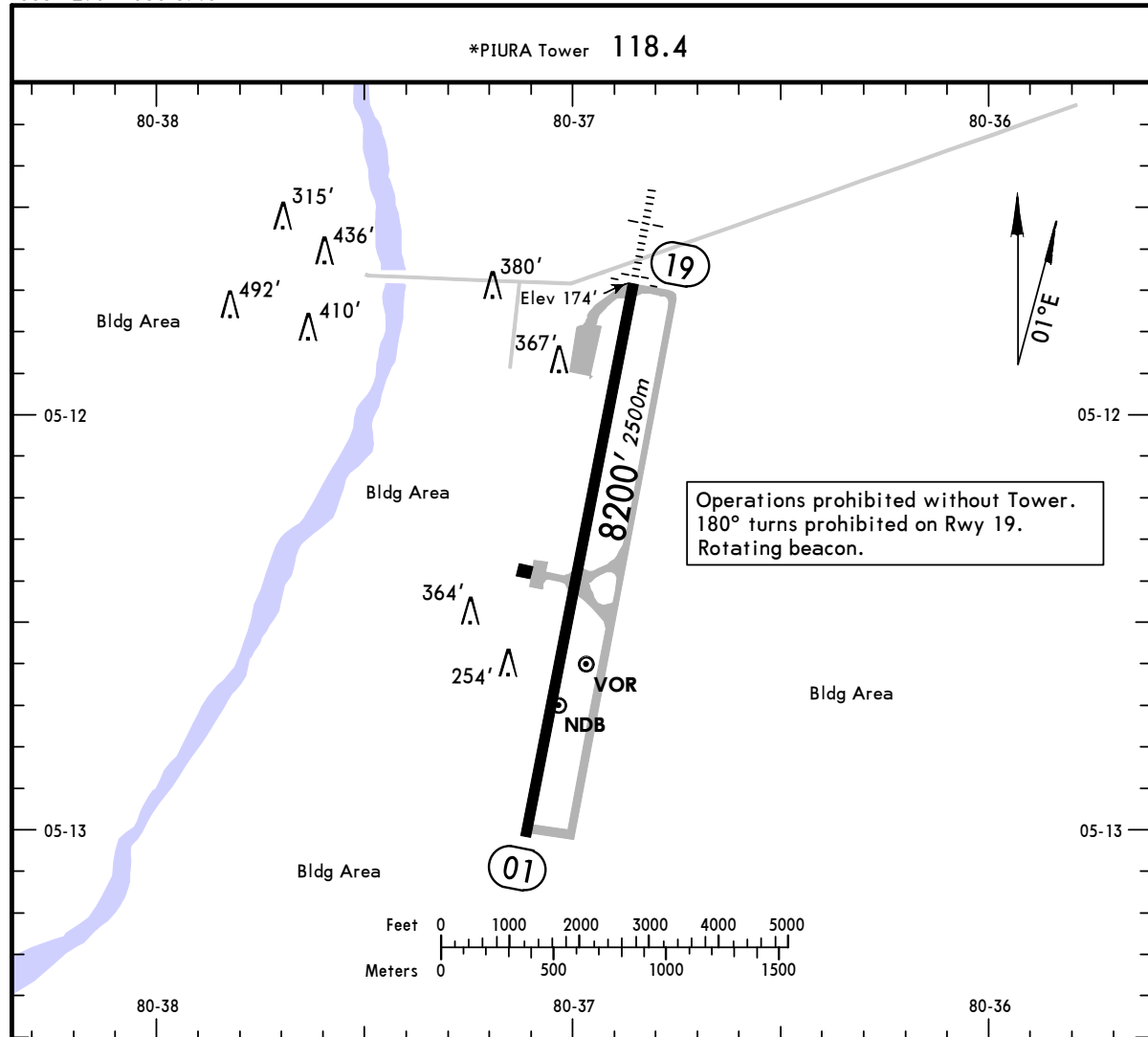


Notice: After 07/12/2006 0901Z this chart should not be used without first checking JeppView or NOTAMs.

**SPUR/PIU**  
Apt Elev **116'**  
S05 12.4 W080 37.0

**JEPPESEN**  
7 OCT 05 **(13-1)**

**PIURA, PERU**  
**CAP GUILLERMO CONCHA IBERICO**



#### ADDITIONAL RUNWAY INFORMATION

RWY		USABLE LENGTHS		TAKE-OFF	WIDTH
		Threshold	Glide Slope		
01	MIRL PAPI (angle 3.0°)				148'
19	MIRL SALS PAPI (angle 3.0°)				45m

#### TAKE-OFF

##### AIR CARRIER (JAA)

**LVP must be in Force**  
**All Rwys**  
RCLM (DAY only)  
or RL

**All Rwys**  
RCLM (DAY only)  
or RL

A		
B	250m	400m
C		
D	300m	