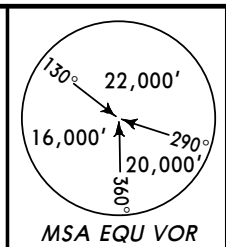


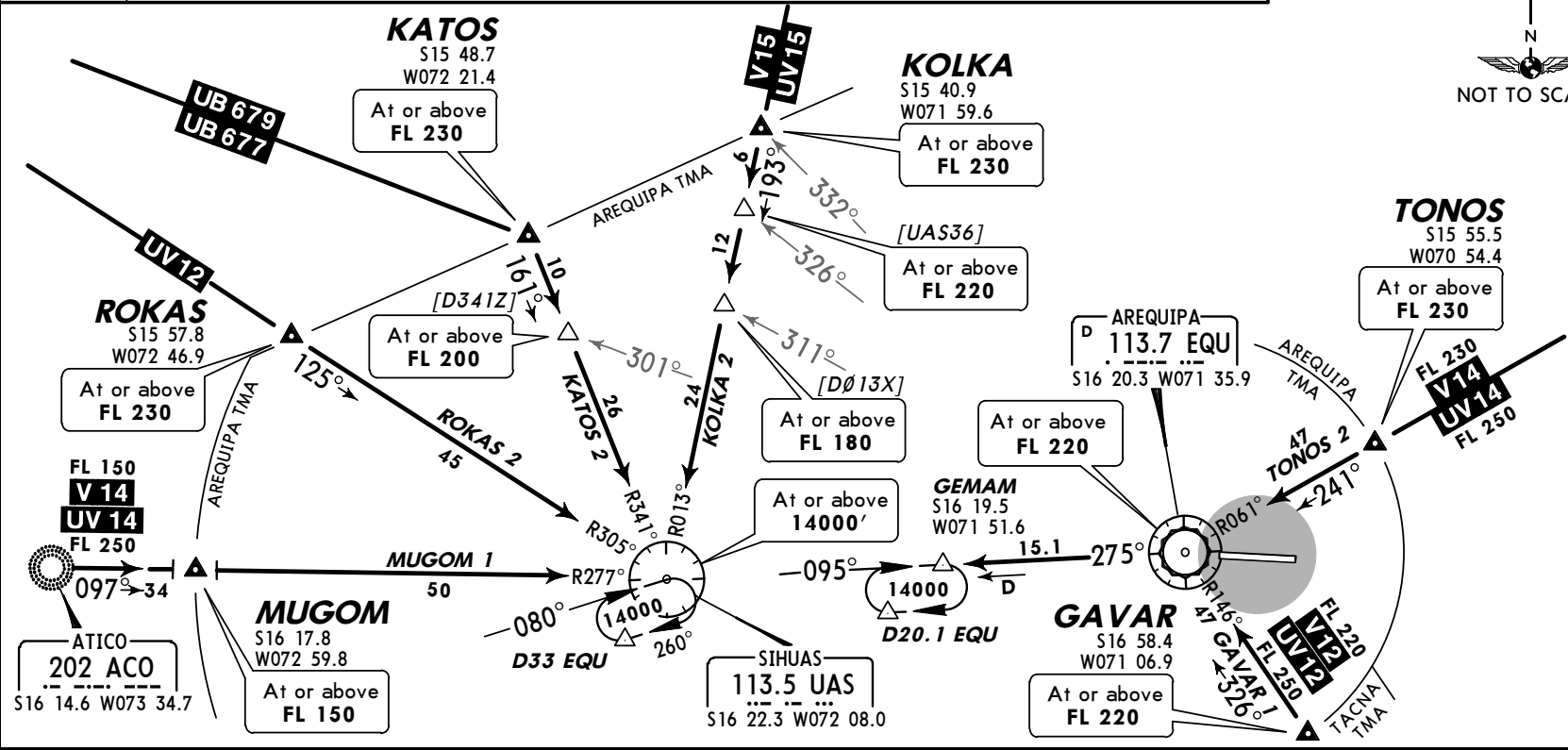
SPQU/AQP
RODRIGUEZ BALLOON
25 AUG 06
10-2
AREQUIPA, PERU
STAR

Apt Elev
8405'
Alt Set: hPa
Trans level: By ATC
Trans alt: 14000'



GAVAR 1, KATOS 2, KOLKA 2, MUGOM 1,
ROKAS 2, TONOS 2 ARRIVALS
(RWY 09)

STAR	ROUTING
GAVAR 1	Descend from routes V-12/UV-12 to cross GAVAR. Continue on EQU R-146 (heading 326°) to EQU. Continue on EQU R-275 to hold at GEMAM. Proceed in accordance with ATC authorization.
KATOS 2	Descend from routes UB-677/UB-679 to cross KATOS. Then turn RIGHT to intercept UAS R-341 (heading 161°) to UAS and hold. Proceed in accordance with ATC authorization.
KOLKA 2	Descend from routes V-15/UV-15 to cross KOLKA. Proceed on UAS R-013 (heading 193°) to UAS and hold. Proceed in accordance with ATC authorization.
MUGOM 1	Descend from routes V-14/UV-14 to cross MUGOM. Proceed on UAS R-277 (heading 097°) to UAS and hold. Proceed in accordance with ATC authorization.
ROKAS 2	Descend from route UV-12 to cross ROKAS. Proceed on UAS R-305 (heading 125°) to UAS and hold. Proceed in accordance with ATC authorization.
TONOS 2	Descend from routes V-14/UV-14 to cross TONOS. Continue on EQU R-061 (heading 241°) to EQU. Continue on EQU R-275 to hold at GEMAM. Proceed in accordance with ATC authorization.



Notice: After 07/12/2006 0901Z this chart should not be used without first checking JeppView or NOTAMS.

JEPPESEN

AREQUIPA, PERU

21 NOV 03

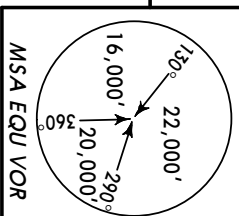
10-3

Eff 27 Nov


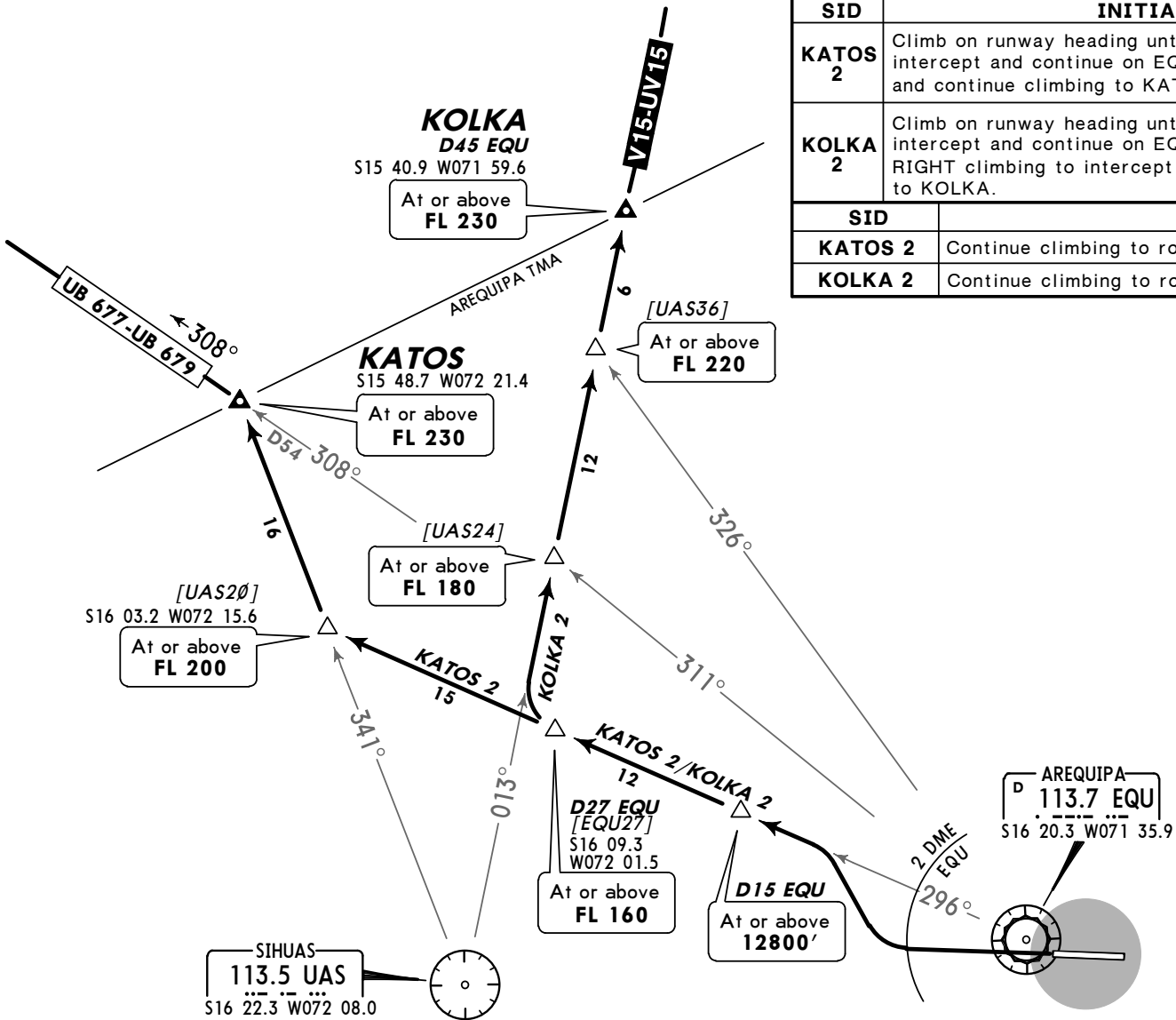
SID

Trans level: By ATC Trans alt: 14000'

KATOS 2, KOLKA 2 DEPARTURES



SID	INITIAL CLIMB
KATOS 2	Climb on runway heading until 2 DME EQU, turn RIGHT to intercept and continue on EQU R-296. Intercept UAS R-341 and continue climbing to KATOS.
KOLKA 2	Climb on runway heading until 2 DME EQU, turn RIGHT to intercept and continue on EQU R-296. At D27 EQU turn RIGHT climbing to intercept and continue on UAS R-013 to KOLKA.
SID	ROUTING
KATOS 2	Continue climbing to routes UB-677/UB-679.
KOLKA 2	Continue climbing to routes V-15/UV-15.



SPQU/AQP
RODRIGUEZ BALLON INTL

JEPPesen
21 NOV 03
10-3A

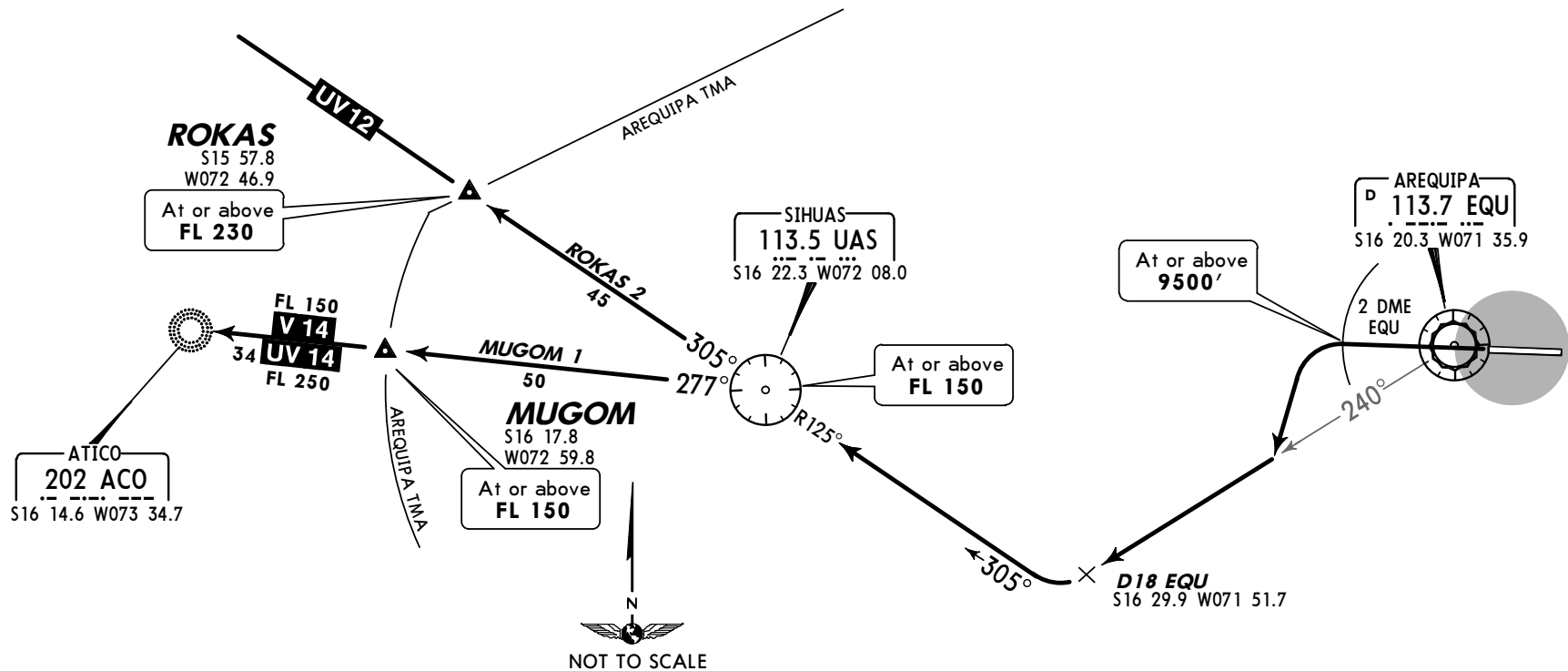
Eff 27 Nov

AREQUIPA, PERU
SID

Apt Elev
8405'

Trans level: By ATC Trans alt: 14000'

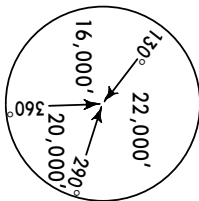
MUGOM 1, ROKAS 2 DEPARTURES (RWY 27)



INITIAL CLIMB

SID	INITIAL CLIMB
MUGOM 1	Climb on runway heading until 2 DME EQU and at or above 9500', climbing LEFT turn to intercept and proceed on EQU R-240 to D18 EQU, then turn RIGHT to intercept UAS R-125 (heading 305°) to UAS. Proceed via UAS R-277 to MUGOM and continue climbing to routes V-14/UV-14.
ROKAS 2	Climb on runway heading until 2 DME EQU and at or above 9500', climbing LEFT turn to intercept and continue on EQU R-240 to D18 EQU, then turn RIGHT to intercept UAS R-125 (heading 305°) to UAS and continue via UAS R-305 to ROKAS. Continue climbing to route UV-12.

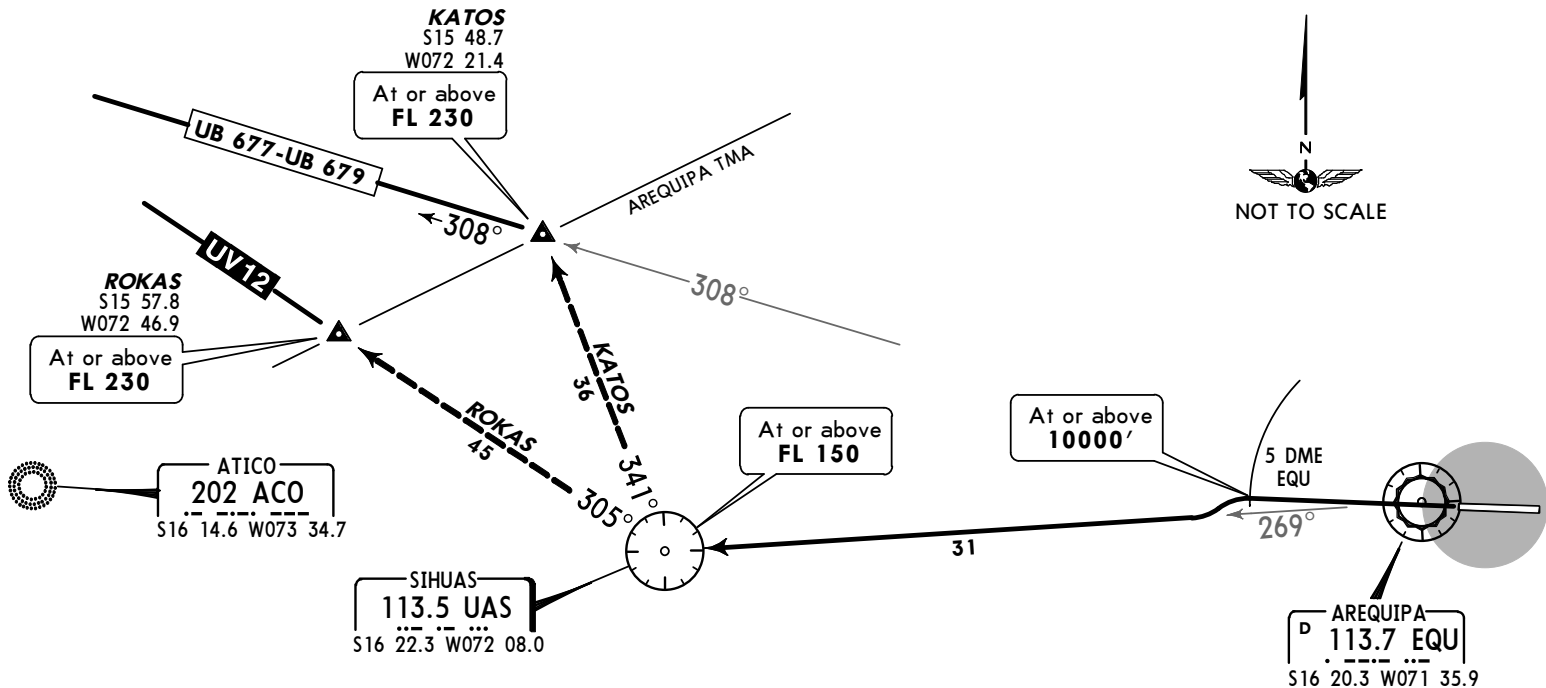
MSA EQU VOR



SPQU/AQP
RODRIGUEZ BALLON INTL
21 NOV 03
10-3B
JEPPESSEN
AREQUIPA, PERU
SID

Apt Elev
8405'
Trans level: By ATC
Trans alt: 14000'

SIHUAS 2 DEPARTURE
(RWY 27)



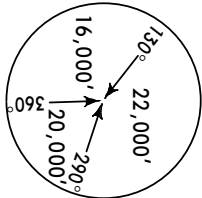
INITIAL CLIMB

Climb on runway heading until crossing 5 DME EQU at or above 10000', then turn LEFT to intercept EQU R-269 to UAS and continue via the authorized transition.

TRANSITIONS

KATOS	Intercept UAS R-341 to KATOS. Turn LEFT on EQU R-308 and continue climbing on UB-677/UB-679.
ROKAS	Intercept UAS R-305 to ROKAS and continue climbing on UV-12.

MSA EQU VOR



SPQU/AQP

RODRIGUEZ BALLON INTL

JEPPesen

21 NOV 03

10-3C

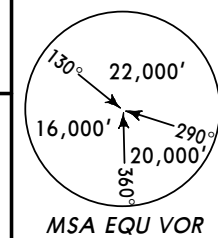
Eff 27 Nov

AREQUIPA, PERU

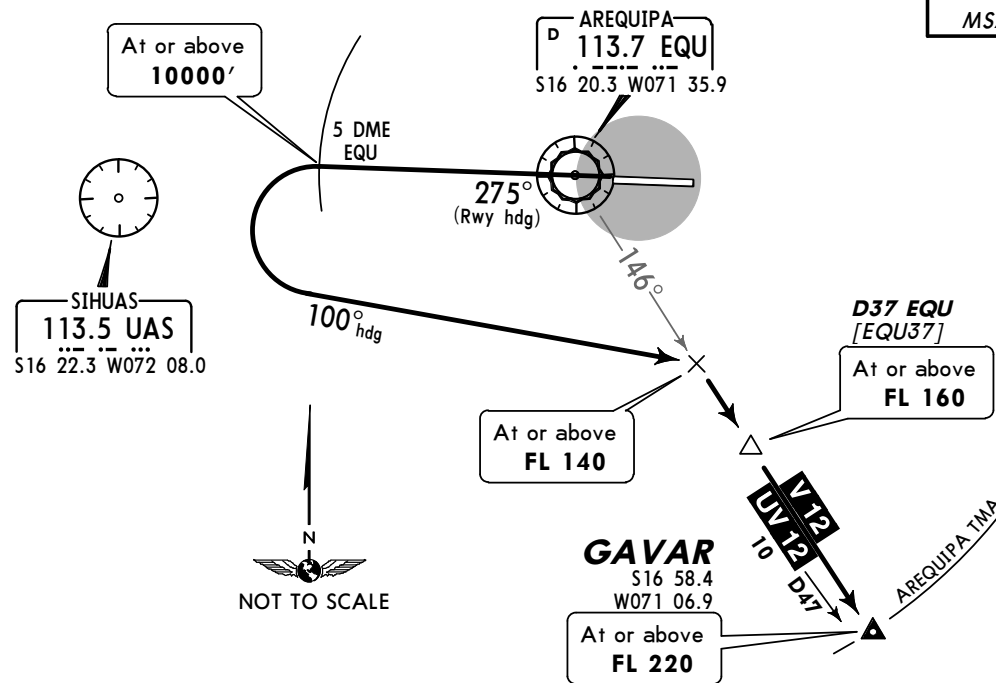
SID

Apt Elev
8405'

Trans level: By ATC Trans alt: 14000'



GAVAR 1 DEPARTURE (RWY 27)



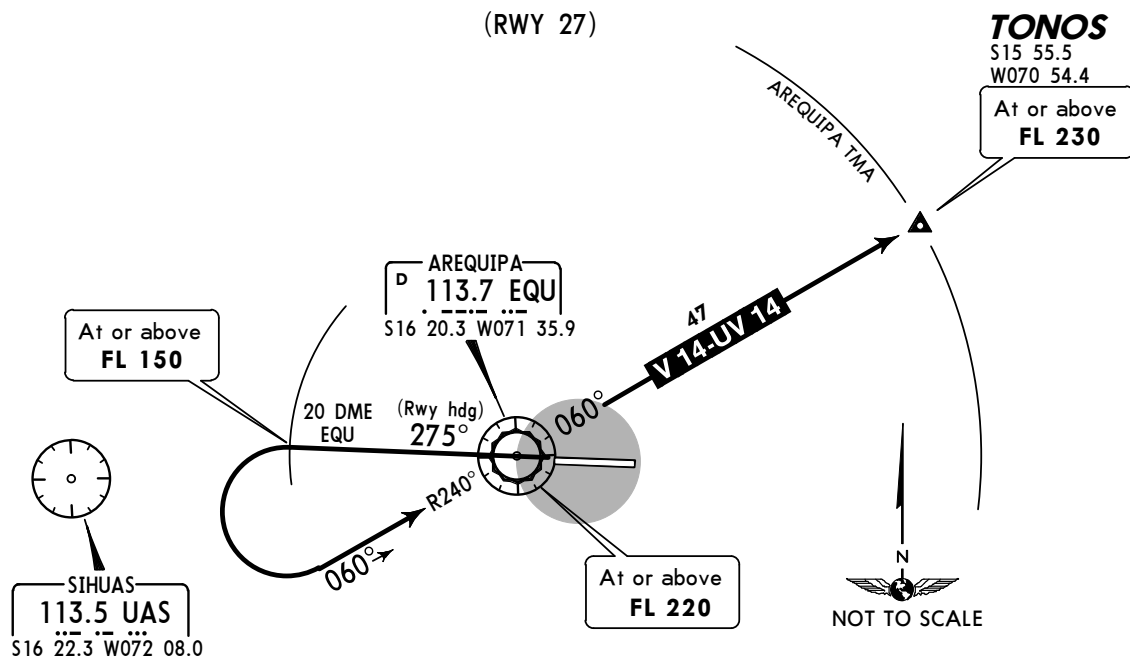
INITIAL CLIMB

Climb on runway heading until crossing 5 DME EQU at or above 10000', then turn LEFT climbing on a heading of 100° until intercepting EQU R-146 to GAVAR.

ROUTING

Continue climbing on V-12/UV-12.

TONOS 2 DEPARTURE (RWY 27)



INITIAL CLIMB

Climb on runway heading until crossing 20 DME EQU at or above FL 150, then turn LEFT climbing to intercept EQU R-240 (heading 060°) to EQU. Continue on EQU R-060 to TONOS.

ROUTING

Continue climbing on V-14/UV-14.

SPQU/AQP

RODRIGUEZ BALLON

JEPPESEN

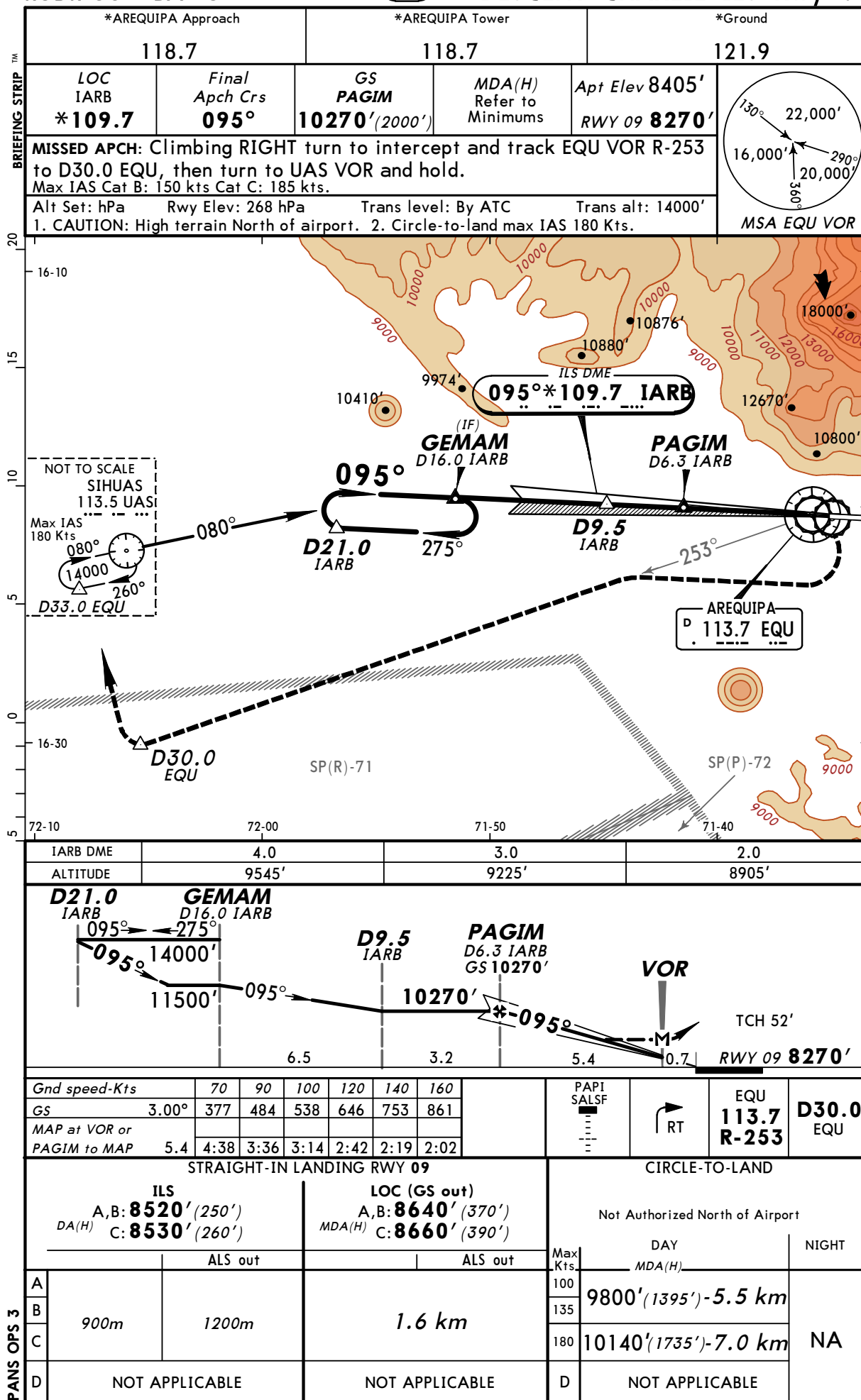
25 AUG 06

(11-1)

CAT A, B & C

AREQUIPA, PERU

DESCENT CHARLIE ILS Rwy 09



Notice: After 07/12/2006 0901Z this chart should not be used without first checking JeppView or NOTAMS.

SPQU/AQP

RODRIGUEZ BALLON

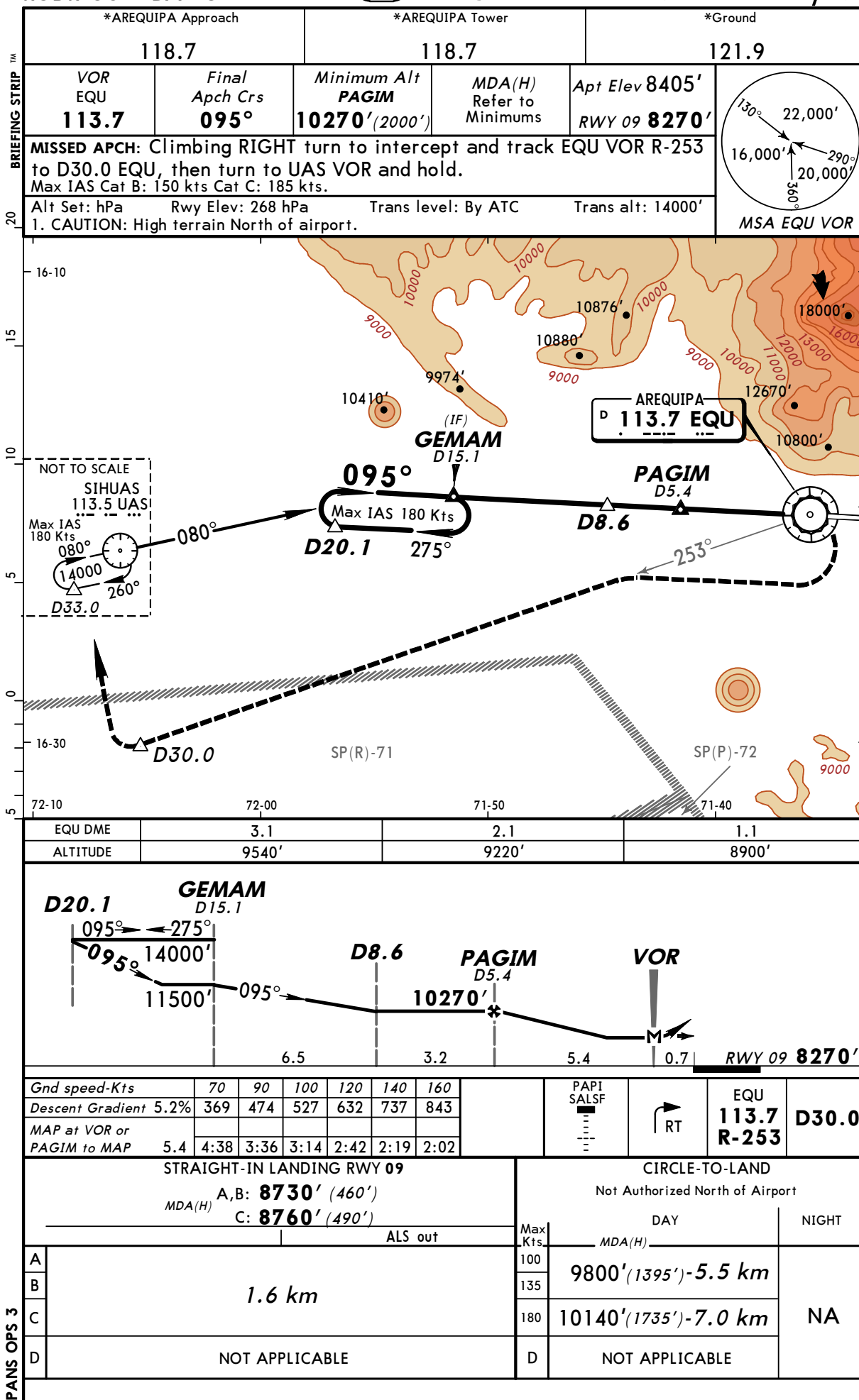
JEPPESEN

26 MAR 04

(13-1)

CAT A, B & C AREQUIPA, PERU

DESCENT DELTA VOR DME Rwy 09

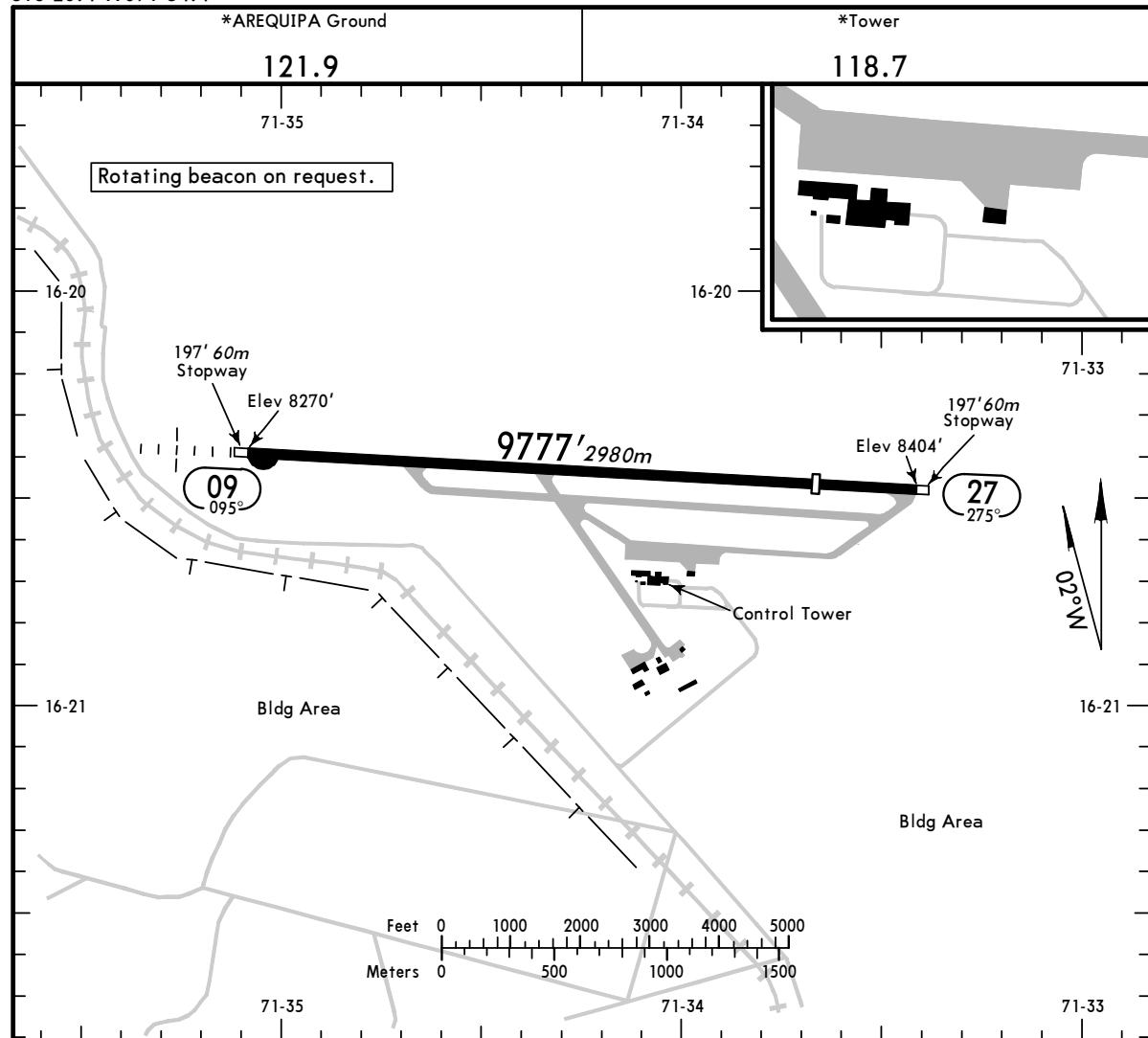


Notice: After 07/12/2006 0901Z this chart should not be used without first checking JeppView or NOTAMS.

SPQU/AQP
Apt Elev **8405'**
S16 20.4 W071 34.4

JEPPESEN
25 AUG 06 **(11-1)**

AREQUIPA, PERU
RODRIGUEZ BALLON



ADDITIONAL RUNWAY INFORMATION

RWY		USABLE LENGTHS			
		LANDING BEYOND	Threshold	Glide Slope	TAKE-OFF
09	Flare pots (Emerg. only) ① RL SALSF PAPI (angle 3.0°)				
27	Flare pots (Emerg. only) ① RL PAPI (angle 3.3°)	8301' 2530m			

① 8301' 2530m in length.

① TAKE-OFF

	Rwy 27		Other	Rwy 09
	Take-Off Alternate Apt. Filed			NA
	RL and CL	RL or CL		
2 Eng	1 hr alternate (1 eng inop) 600m		Available Landing Minimums	NA
3 & 4 Eng	2 hr alternate (1 eng inop) 600m			

① Minimum climb gradient 3.3%.