

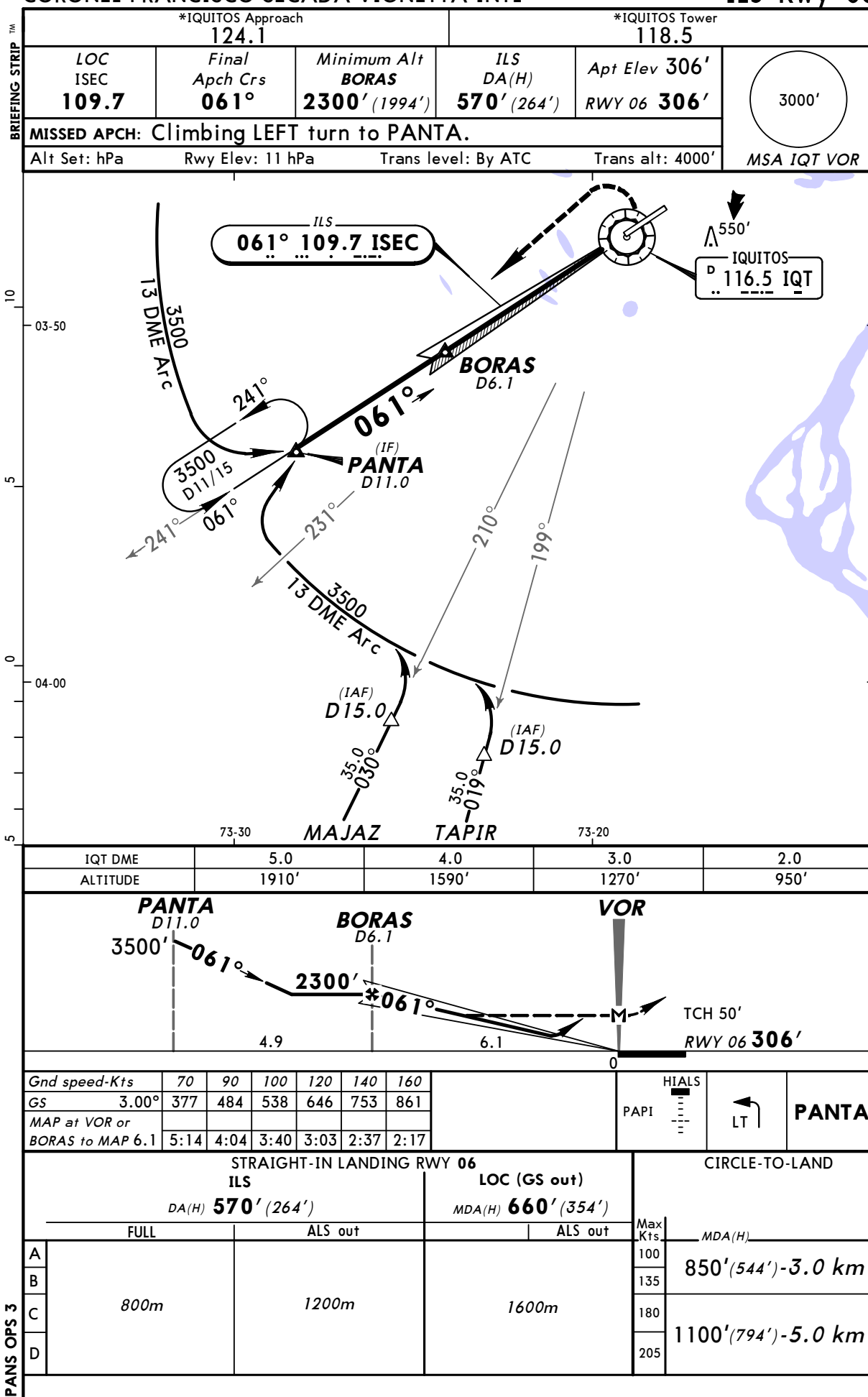
SPQT/IQT

JEPPESEN

26 MAR 04 (11-1)

IQUITOS, PERU
DESCENT FOXTROT
ILS Rwy 06

CORONEL FRANCISCO SECADA VIGNETTA INTL



Notice: After 07/12/2006 0901Z this chart should not be used without first checking JeppView or NOTAMs.

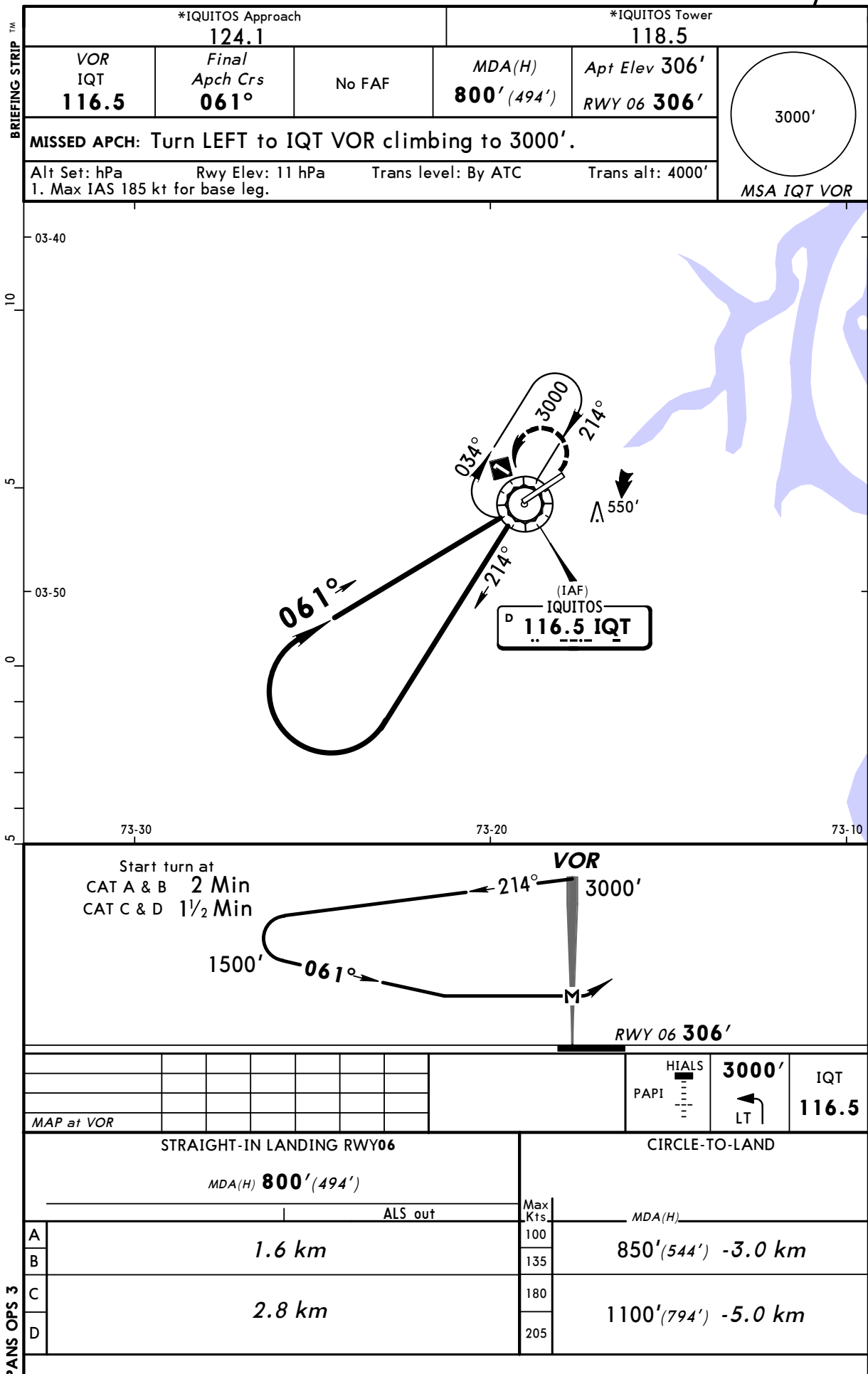
SPQT/IQT

JEPPESEN

25 APR 03 (13-1)

IQUITOS, PERU
APPROACH CHARLIE
VOR Rwy 06

CORONEL FRANCISCO SECADA VIGNETTA INTL



CHANGES: Chart reindexed.

© JEPPESEN SANDERSON, INC., 2000, 2003. ALL RIGHTS RESERVED.

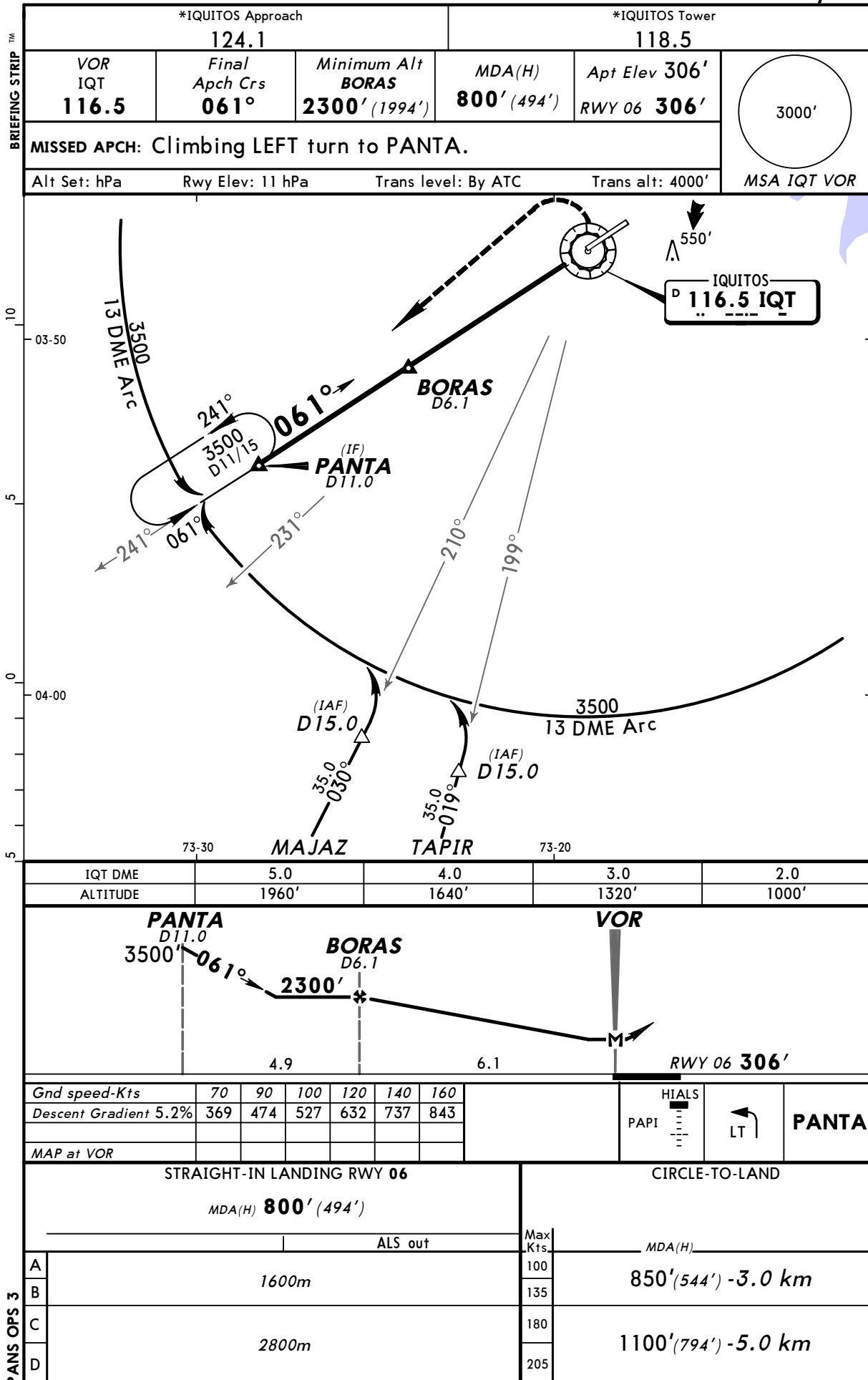
SPQT/IQT

JEPPESEN

25 APR 03 (13-2)

CORONEL FRANCISCO SECADA VIGNETTA INTL

IQUITOS, PERU
DESCENT GOLF
VOR DME Rwy 06



Notice: After 07/12/2006 0901Z this chart should not be used without first checking JeppView or NOTAMs.

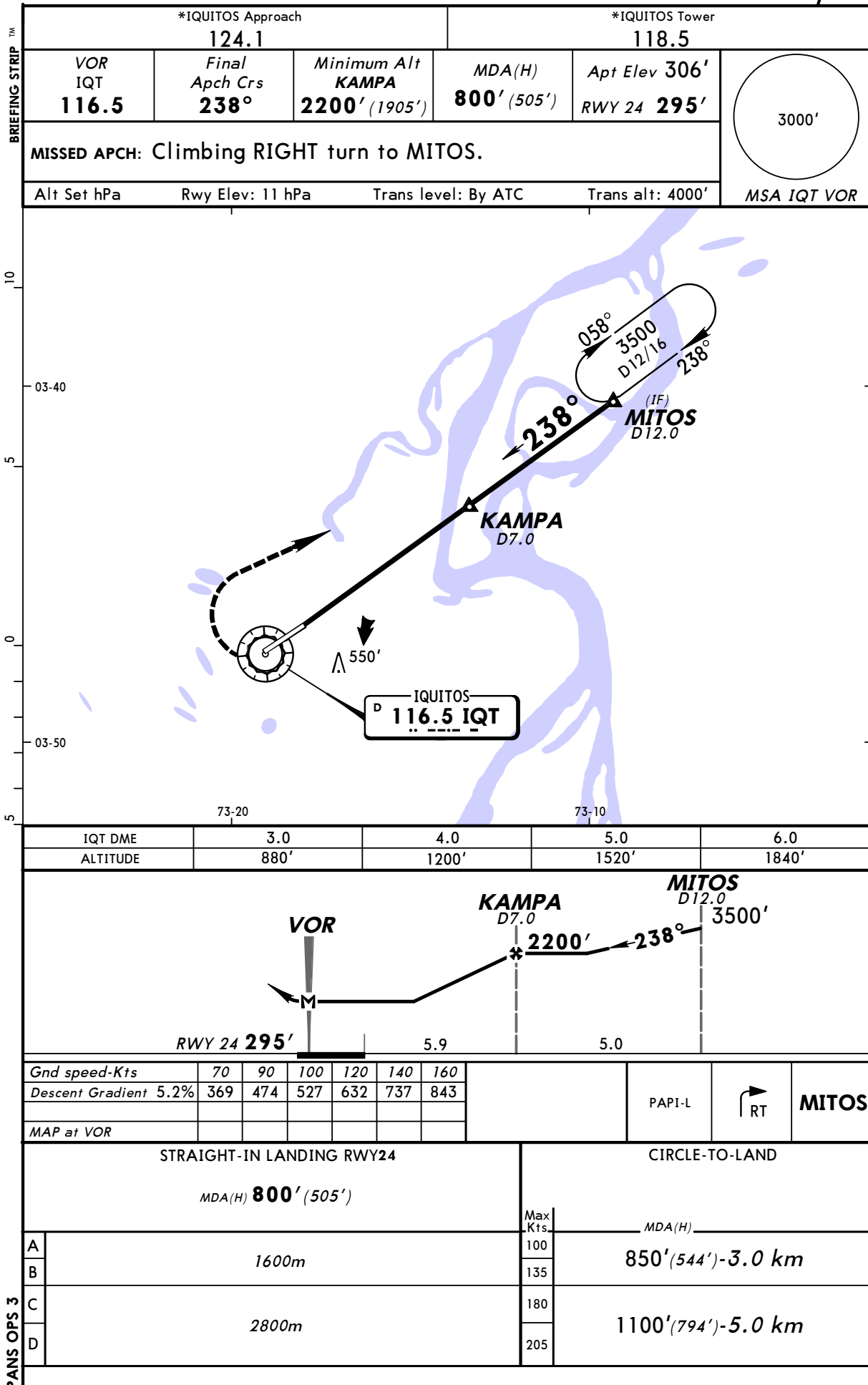
SPQT/IQT

JEPPESEN

26 MAR 04 (13-3)

CORONEL FRANCISCO SECADA VIGNETTA INTL

IQUITOS, PERU
APPROACH ECHO
VOR DME Rwy 24



CHANGES: Lighting.

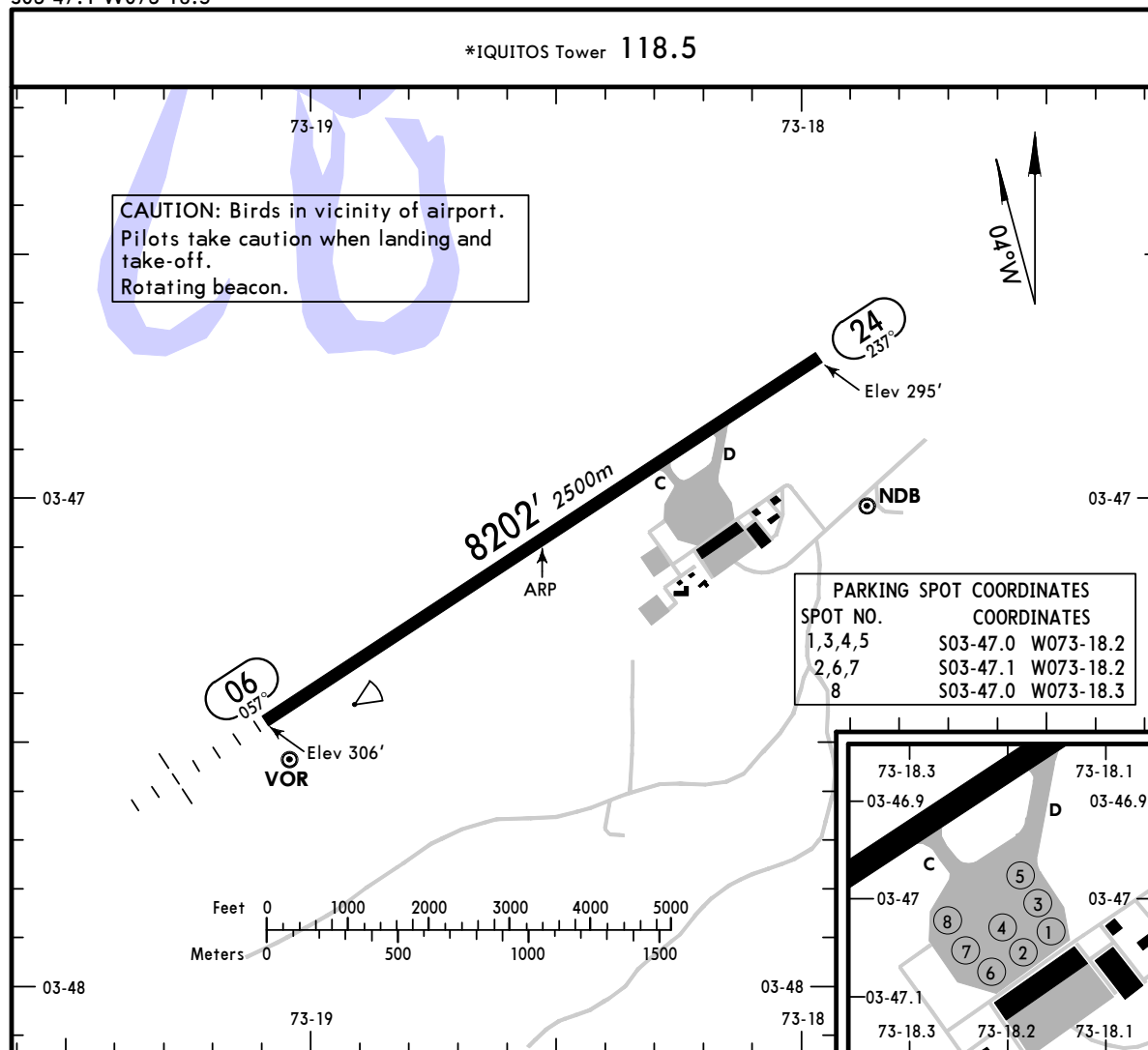
© JEPPESEN SANDERSON, INC., 2000, 2004. ALL RIGHTS RESERVED.

Notice: After 07/12/2006 0901Z this chart should not be used without first checking JeppView or NOTAMS.

SPQT/IQT
Apt Elev **306'**
S03 47.1 W073 18.5

JEPPESEN
26 MAR 04 **(11-1)**

IQUITOS, PERU
CORONEL FRANCISCO SECADA VIGNETTA INTL



ADDITIONAL RUNWAY INFORMATION

RWY		USABLE LENGTHS			
		LANDING BEYOND		TAKE-OFF	WIDTH
		Threshold	Glide Slope		
06	RL HIALS SFL PAPI-L (angle 3.00°)	RVR			148'
24	RL PAPI-L (angle 3.00°)				45m

1 TAKE-OFF

	Rwy 24			Rwy 06
	Take-Off Alternate Apt. Filed		Other	NA
	RL & CL	RL or CL		
2 Eng	1 hr alternate (1 Eng inop) 600m		Available Landing Minimums	
3 & 4 Eng	2 hr alternate (1 Eng inop) 600m			

1 Minimum climb gradient 3.3%.

CHANGES: Parking inset and rwy 24 PAPI added.

© JEPPESEN SANDERSON, INC., 2000, 2004. ALL RIGHTS RESERVED.