

SPMS/YMS

MOISES BENZAQUEN RENGIFO

JEPPesen

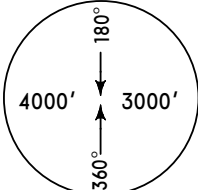
29 JUL 05

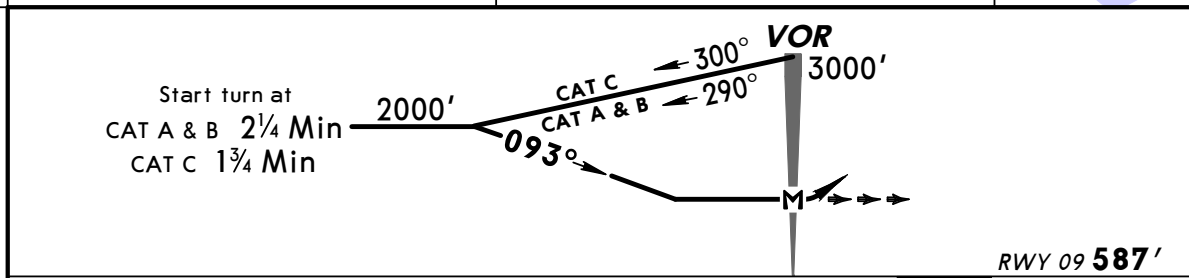
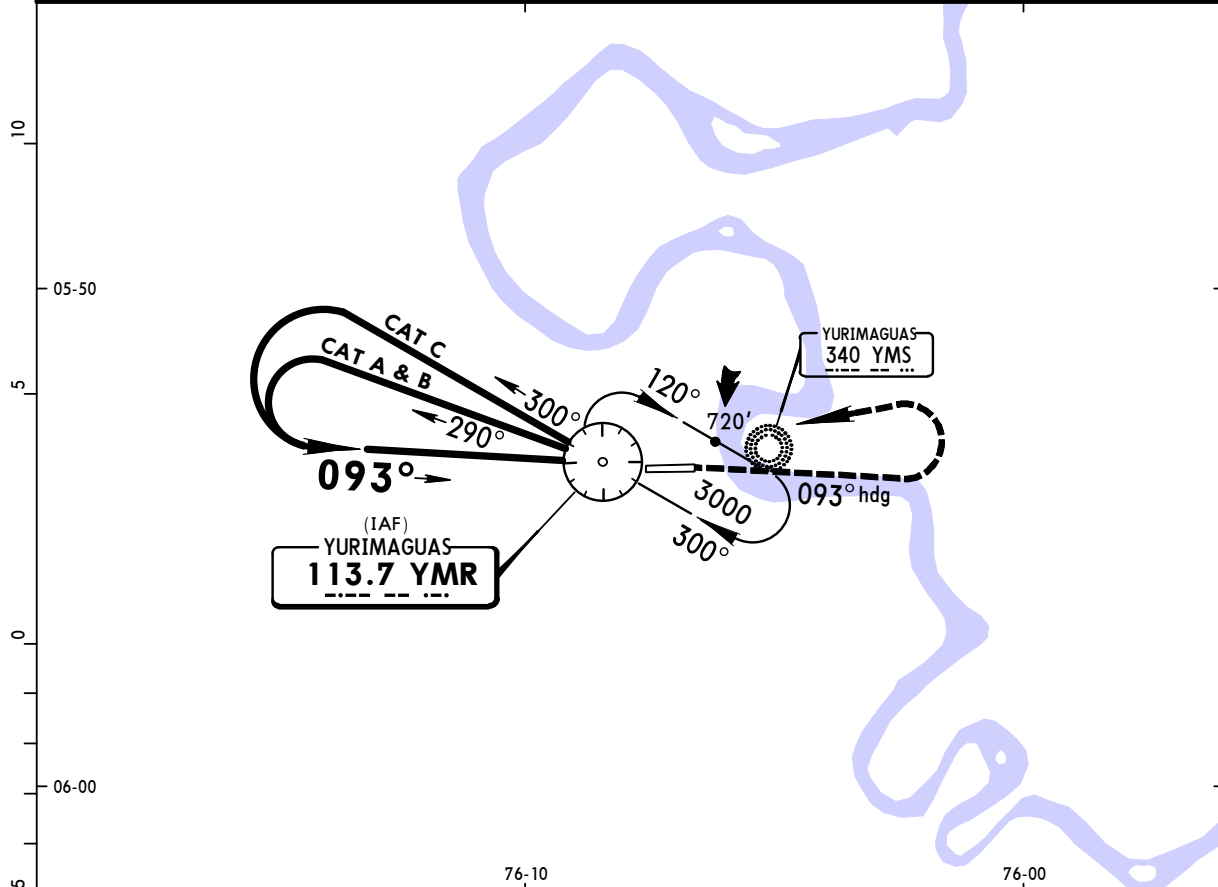
(13-1)

YURIMAGUAS, PERU

CAT A, B & C VOR Rwy 09

BRIEFING STRIP

*YURIMAGUAS Radio (AFIS) 118.1					
VOR YMR 113.7	Final Apch Crs 093°	No FAF	MDA(H) 1000' (413')	Apt Elev 587' Rwy 09 587'	
MISSED APCH: Climb on heading 093° to 3000'. Turn LEFT to YMR VOR and hold.					
Alt Set: hPa Rwy Elev: 21 hPa Trans level: By ATC Trans alt: 3000' 1. CAUTION: Urban zones located at 230' (70m) and 279' (85m) from the center of runway on the North and South sectors of airport.					
					MSA YMR VOR



MAP at VOR				SALS APAPI	3000' on	093° hdg	LT	YMR 113.7
------------	--	--	--	---------------	----------	-------------	----	--------------

STRAIGHT-IN LANDING RWY 09				CIRCLE-TO-LAND			
MDA(H) 1000' (413')							
ALS out							
A	2.0 km			A	NA		
B				B			
C				C			
D	NOT APPLICABLE			D			

Notice: After 07/12/2006 0901Z this chart should not be used without first checking JeppView or NOTAMs.

SPMS/YMS

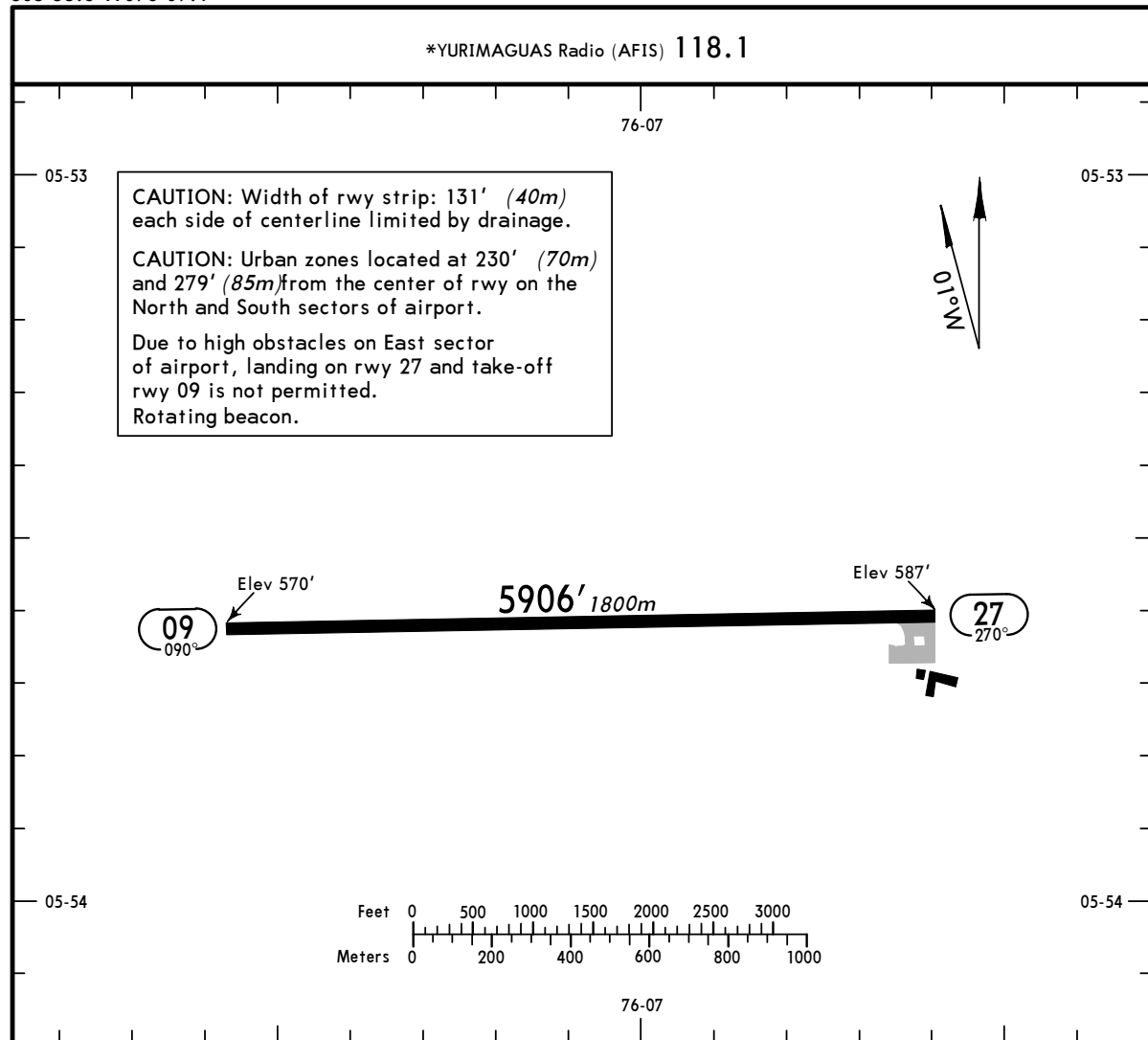
Apt Elev **587'**
S05 53.6 W076 07.1

JEPPesen

29 JUL 05 **(13-1)**

YURIMAGUAS, PERU
MOISES BENZAQUEN RENGIFO

*YURIMAGUAS Radio (AFIS) **118.1**



ADDITIONAL RUNWAY INFORMATION

RWY		USABLE LENGTHS		TAKE-OFF	WIDTH
		Threshold	Glide Slope		
09	RL REIL SALS ① APAPI (angle 2.8°)			NA	98'
27	RL REIL	NA			30m

① Hours of operation 1200-2400: other times on request.

TAKE-OFF					
AIR CARRIER (JAA)			AIR CARRIER (FAR 121)		
LVP must be in Force Rwy 27 RCLM (DAY only) or RL		Rwy 27 RCLM (DAY only) or RL	Rwy 27 Adequate Vis Ref		
A			2 Eng		
B	250m	400m	3 & 4 Eng	400m	
C					
D	300m				